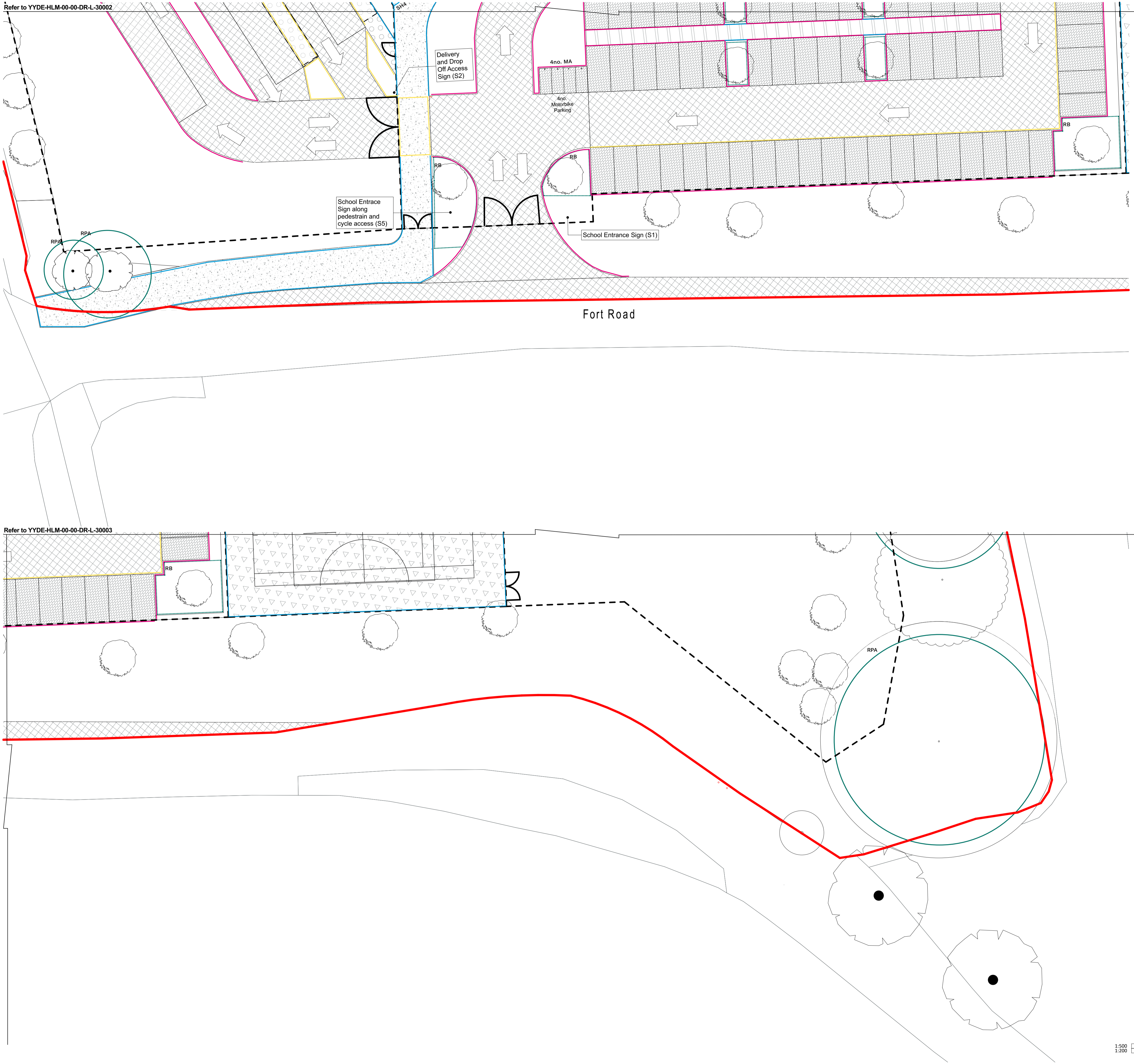


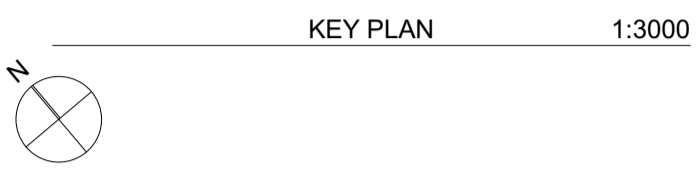
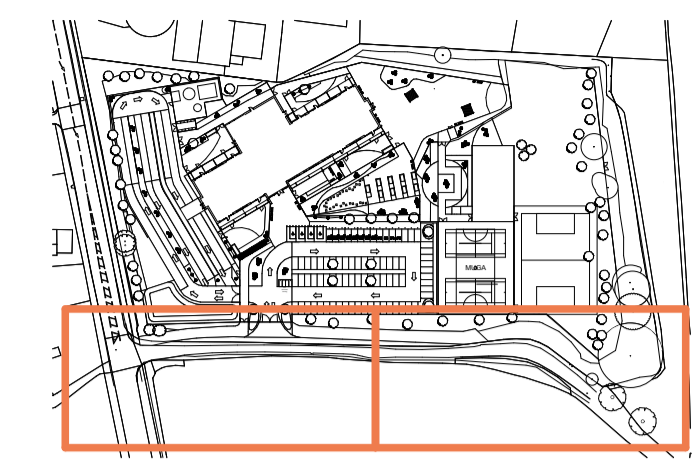
Refer to YYDE-HLM-00-00-DR-L-30002

Refer to YYDE-HLM-00-00-DR-L-30003



- KEY**
- SITE BOUNDARY**
- HARD LANDSCAPE**
- AP1 - Artificial pitch**  
To Engineer's specification  
SS\_30\_14\_14\_50\_80
  - AS2 - Porous Asphalt - Vehicular grade**  
To Engineer's specification
  - AS3 - Porous asphalt - To MUGA**  
Black with thermoplastic line markings for up to 3 sports in various colours  
To Engineer's specification  
SS\_30\_14\_05\_70
  - CC1 - Concrete**  
To Engineer's specification
  - GV1 - Resin bound gravel suitable for pedestrian / MEWP access**  
Addagrip 'Addabound' or equal approved 6mm, Golden Beach  
Ss\_30\_14\_02\_70
  - GV2 - Resin bound gravel suitable for pedestrian / MEWP access**  
Addagrip 'Addabound' or equal approved 6mm, Oyster Resin  
Ss\_30\_14\_02\_70
  - GV2 - Resin bound gravel suitable for vehicular access**  
Addagrip 'Addabound' or equal approved 6mm, Oyster Resin. Refer to Engineer's specification.  
Ss\_30\_14\_02\_70
  - PA1 - Paving flags**  
Silver Granite  
Spec ref: Ss\_30\_14\_90\_85
  - PB - Porous block paving**  
To Engineer's specification  
Ss\_30\_14\_90\_62
  - WP1 - Wet Pour Rubber Mat**  
Wet pour rubber safety matting for play areas  
To Engineer's specification  
Indicative area for future play equipment to be installed by others. Note that MEWP access has been designed around these locations, so any proposed play equipment put in must take this into account.  
Ss\_30\_14\_02\_41
- FENCING**
- Fencing**  
Refer to fencing drawing YYDE-HLM-00-00-DR-L-25001 SITE SECURITY & FENCING PLAN
  - Gate**  
Refer to gate drawing YYDE-HLM-00-00-DR-L-25001 SITE SECURITY & FENCING PLAN
- FURNITURE**
- BE1 & BE2 Fixed Seating**  
Material: Powder coated steel, timber  
Spec ref: Ss\_40\_20\_30\_28
  - RP1 Raised Planters**  
Langley Design Sheldon SPL305 or equal approved.  
Spec ref: Ss\_45\_40\_28\_25
  - RP2 Raised Planters with table**  
Langley Design Sheldon SPL305 or equal approved.  
Spec ref: Ss\_45\_40\_28\_25
  - DB Door barrier**  
Stainless steel  
450 x 1020mm  
Spec ref: Ss\_25\_15\_60\_37
  - LB Litter Bin**  
Material: Timber clad galvanised steel  
Size: 75L  
Spec ref: Ss\_40\_20\_30\_30
  - SH1 Storage Shelter**  
A large metal shed, with security features to keep all playground equipment locked away safely.  
Spec reference: Pr\_40\_30\_28\_34
  - SH2 Canopy / shelter**  
Anticlimb design. Located around building canopy. To Architect's detail.
  - SH3 Pergola**  
Pergola  
Ss\_20\_10\_70\_62
  - SH4 Cycle Shelter**  
With green roof  
Ss\_20\_10\_70\_84
  - SH5 Scooter Storage Unit**  
Pr\_40\_30\_21\_76
  - PE1 Thermoplastic playground markings**  
A range of playground linemarkings in various colours to be provided across all play areas.  
Pr\_35\_31\_85\_88
  - Root Protection Area (RPA)**
  - Sewage Pumping Station (SPS)**  
Sewage pumping station for foul drainage, pumping approximately 300m to the north east along Lavernock Rd, connecting to DCWW manhole ST17699103. Refer to Civil Engineer drawing:

**Notes**  
Check all dimensions on site. Do not scale from this drawing  
Report any discrepancies and omissions to HLM Architects  
This Drawing is Copyright ©



- Motorbike anchors**  
Motor cycle security ground anchor-retractable-extra heavy duty with zinc plated finish, 100 x 100mm  
Spec ref: Ss\_25\_16\_94\_10
- Bollards**  
To protect building from accidental vehicle collision where there is a dropped kerb.  
Stainless steel. 114mm dia. x 900mm high  
Spec ref: Ss\_25\_16\_94\_10
- EV Charger**  
EV charger to be high impact resistant polycarbonate finish  
1440mm high, 382.5 x 262.5mm  
Spec ref: Ss\_25\_16\_94\_10
- EG1 - HB2 kerb**  
Concrete  
125mm upstand, 125 x 255mm  
Spec ref: Ss\_30\_75\_45\_85
- EG2 - Edging pin kerb**  
Concrete  
0mm upstand, 50 x 150mm  
Spec ref: Ss\_30\_75\_45\_45
- EG3 - Bullnosed kerb**  
Concrete  
0-6mm upstand, 125 x 255mm  
Spec ref: Ss\_30\_75\_45\_85
- EG4 - Flush kerb**  
Concrete  
0mm upstand, 125 x 255mm  
Spec ref: Ss\_30\_75\_45\_85
- EG5 - Dropper / transition kerb**  
Concrete  
Spec ref: Ss\_30\_75\_45\_85
- EG6 - Metal landscape edge**  
Steel  
Spec Ref: Ss\_30\_75\_45\_45
- EG7 - Crash Barrier**  
Steel  
To engineer's specification

Rev	Description	Date	By	Chk
P06	PEDESTRIAN AND CYCLE ACCESS PATH UPDATED	09.12.22	SL	IB
P05	DRAFT STAGE 4 ISSUE	21.10.22	SL	IB
P04	ISSUED FOR STAGE 4	01.09.22	SL	IB
P03	ISSUED FOR COMMENT	28.07.22	SL	IB
P02	ISSUED FOR COMMENT	07.07.22	SL	IB
P01	ISSUED FOR COMMENT	29.06.22	SL	IB

Revisions	Suitability
Project	S4

**15-1077-01**  
**Ysgol Y Deri -**  
**Primary School**

Client  
**Vale of Glamorgan Council**  
Title

**HARD LANDSCAPE**  
**PLAN SHEET 3 OF 3**

Drawing No. **YYDE-HLM-00-00-DR-L-30004** P06

Scale @ A1	Drawn
1:3000, 1:200	SL
Date	Checked
09.12.22	IB

**HLM Architects**  
© HLM Architects  
Suite 104  
The Creative Quarter  
Morgan Arcade  
The Hayes  
Cardiff CF10 1AF

www.hlmarchitects.com  
T. +44 (0) 29 2039 6070  
F. +44 (0) 29 2039 6080  
cardiff@hlmarchitects.com

