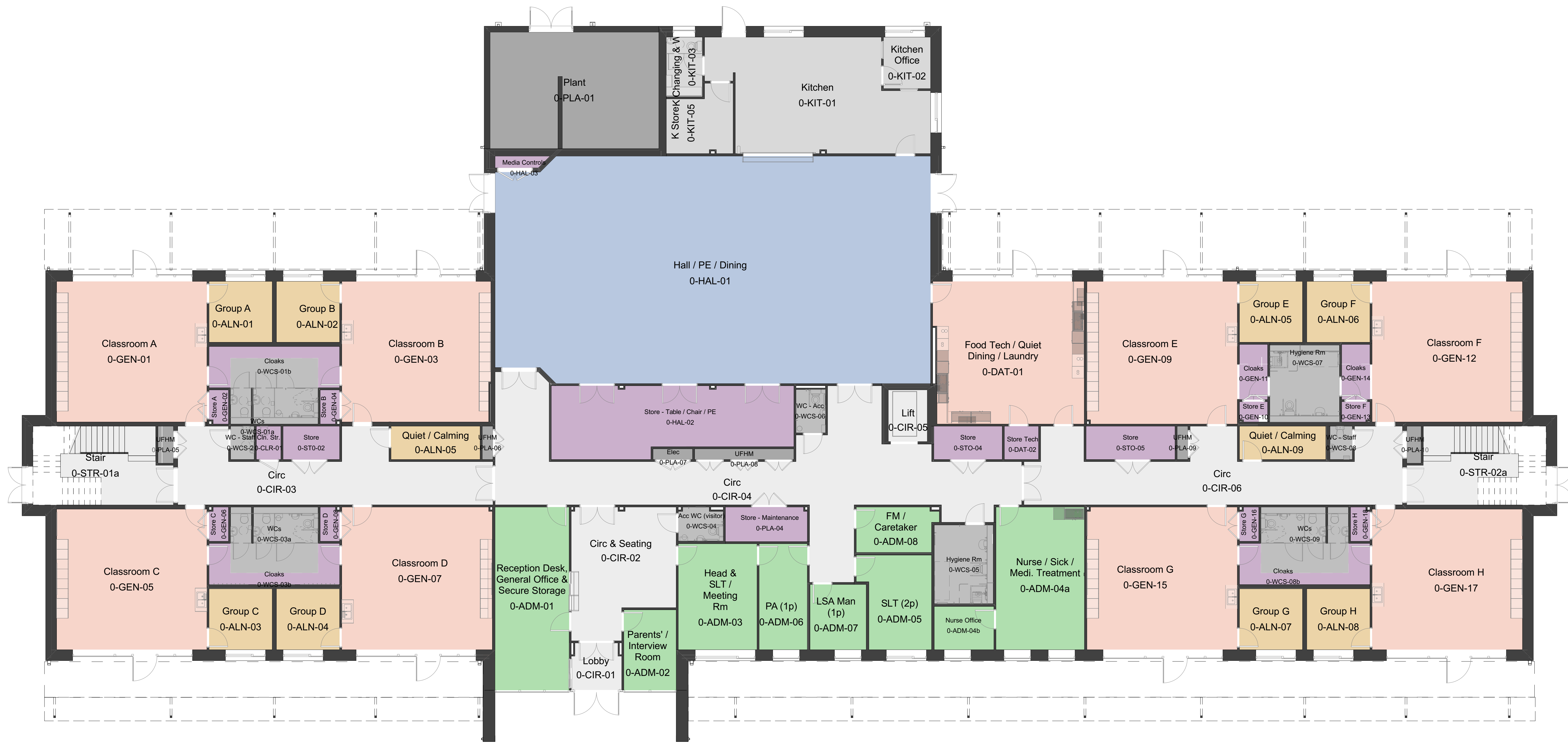


MPO = Max Pupil Occupancy,
 MAO = Max Adult Occupancy (staff, visitors etc)

Occupancies stated are estimated maximum occupancies for calculating fire escape / ventilation. School / VoG to confirm maximum occupancies.

These include pupils, staff and visitors to each room, and do NOT refer to the number of desk spaces.

The building's total occupancy will be less than the sum of these, due to occupants moving around the building.



Rev	Description	Day	Date	By	CHK
P10	Issue for Planning	SA	06.10.2022	AMS	
P11	Issue for Review	SA	11.09.2022	AMS	
P12	Ground floor staff area amended. Booking and unbooked rooms included. Please refer to enclosure sheet.	SA	28.04.2022	AMS	
P13	Updated floor plan submission	SA	24.03.2022	AMS	
P14	Issue for Planning	SA	24.03.2022	AMS	
P15	Issue for Submission	SA	11.03.2022	AMS	
P16	Issue for Planning	SA	01.03.2022	AMS	
P17	Issue for Planning	SA	01.03.2022	AMS	
P18	Issue for Planning	SA	01.03.2022	AMS	
P19	Issue for Planning	SA	01.03.2022	AMS	
P20	Issue for Planning	SA	01.03.2022	AMS	
P21	Issue for Planning	SA	01.03.2022	AMS	
P22	Issue for Planning	SA	01.03.2022	AMS	
P23	Issue for Planning	SA	01.03.2022	AMS	
P24	Issue for Planning	SA	01.03.2022	AMS	
P25	Issue for Planning	SA	01.03.2022	AMS	
P26	Issue for Planning	SA	01.03.2022	AMS	
P27	Issue for Planning	SA	01.03.2022	AMS	
P28	Issue for Planning	SA	01.03.2022	AMS	
P29	Issue for Planning	SA	01.03.2022	AMS	
P30	Issue for Planning	SA	01.03.2022	AMS	
P31	Issue for Planning	SA	01.03.2022	AMS	
P32	Issue for Planning	SA	01.03.2022	AMS	
P33	Issue for Planning	SA	01.03.2022	AMS	
P34	Issue for Planning	SA	01.03.2022	AMS	
P35	Issue for Planning	SA	01.03.2022	AMS	
P36	Issue for Planning	SA	01.03.2022	AMS	
P37	Issue for Planning	SA	01.03.2022	AMS	
P38	Issue for Planning	SA	01.03.2022	AMS	
P39	Issue for Planning	SA	01.03.2022	AMS	
P40	Issue for Planning	SA	01.03.2022	AMS	
P41	Issue for Planning	SA	01.03.2022	AMS	
P42	Issue for Planning	SA	01.03.2022	AMS	
P43	Issue for Planning	SA	01.03.2022	AMS	
P44	Issue for Planning	SA	01.03.2022	AMS	
P45	Issue for Planning	SA	01.03.2022	AMS	
P46	Issue for Planning	SA	01.03.2022	AMS	
P47	Issue for Planning	SA	01.03.2022	AMS	
P48	Issue for Planning	SA	01.03.2022	AMS	
P49	Issue for Planning	SA	01.03.2022	AMS	
P50	Issue for Planning	SA	01.03.2022	AMS	

Revisions
 Project: **15-1077-01**
 Submittal: **S4**

Client
Vale of Glamorgan Council
 VALE OF GLAMORGAN
 BRO MORGANNWG

Ground Floor Plan - Presentation

Drawing No: **YDE-HLM-01-00-DR-A-0101**
 Revision: **P15**
 Scale @ A0: **1:100**
 Drawn: **AMS**
 Date: **06.10.2022**