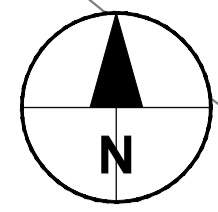


Approved: RM  
Checked: ATZ  
Designer: KP  
Project Management Initials: TJB  
Last saved by: RHYS DAVIES (2021-03-03) Last Plotted: 2021-07-14  
Filename: P:\PROJECTS\HIGHWAYS - LLANMAES FLOOD ALLEVIATION SCHEME\0 CADD\03 DRAWINGS\SERIES 1100 - KERBS, FOOTWAYS, PAVES\30-1100-CT-1101-1100-CT-1101-1108.DWG  
This drawing has been prepared for the use of AECOM's client. It may not be used, modified, reproduced or relied upon by third parties, except as agreed by AECOM or as required by law. AECOM accepts no responsibility, and denies any liability whatsoever, to any party that uses or relies on this drawing without AECOM's express written consent. Do not scale this document. All measurements must be obtained from the stated dimensions.



**PROJECT**  
LLANMAES VILLAGE  
FLOOD ALLEVIATION  
SCHEME

**CLIENT**  
VALE OF GLAMORGAN COUNCIL

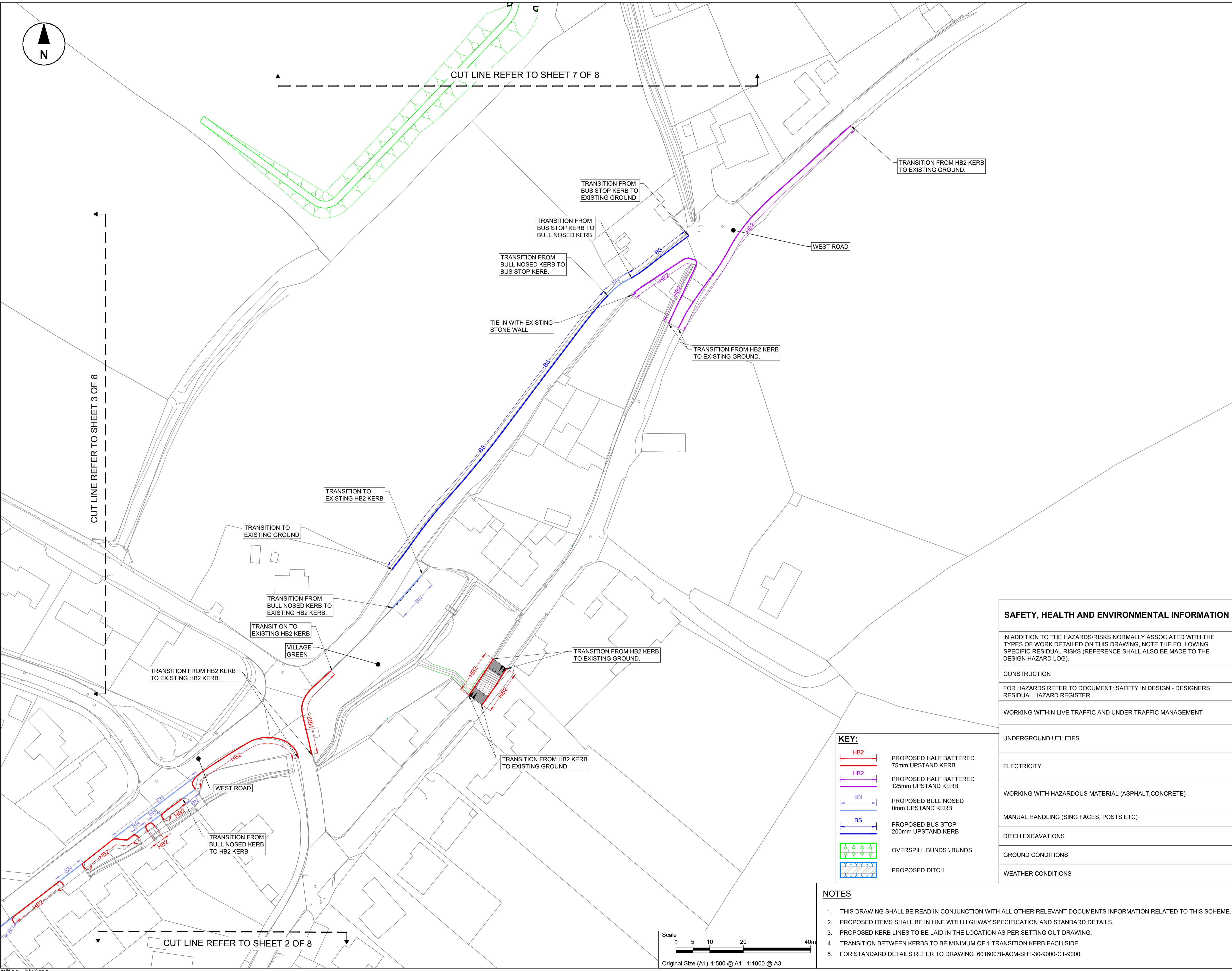


**CONSULTANT**  
AECOM  
1 CALLAGHAN SQUARE  
CARDIFF  
CF10 5BT  
TEL: (029) 20674600  
FAX: (029) 20674699

CUT LINE REFER TO SHEET 7 OF 8

CUT LINE REFER TO SHEET 3 OF 8

CUT LINE REFER TO SHEET 2 OF 8



**SAFETY, HEALTH AND ENVIRONMENTAL INFORMATION**

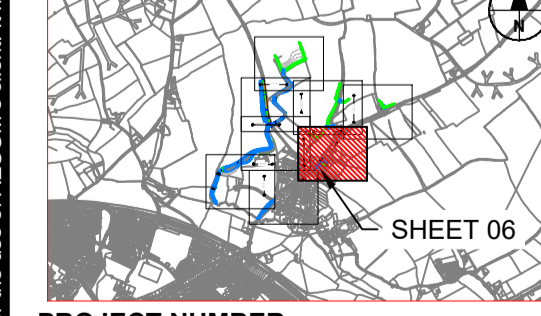
IN ADDITION TO THE HAZARDS/RISKS NORMALLY ASSOCIATED WITH THE TYPES OF WORK DETAILED ON THIS DRAWING, NOTE THE FOLLOWING SPECIFIC RESIDUAL RISKS (REFERENCE SHALL ALSO BE MADE TO THE DESIGN HAZARD LOG).

CONSTRUCTION
FOR HAZARDS REFER TO DOCUMENT: SAFETY IN DESIGN - DESIGNERS RESIDUAL HAZARD REGISTER
WORKING WITHIN LIVE TRAFFIC AND UNDER TRAFFIC MANAGEMENT

**STATUS**  
DETAILED DESIGN

UNDERGROUND UTILITIES
ELECTRICITY
WORKING WITH HAZARDOUS MATERIAL (ASPHALT, CONCRETE)
MANUAL HANDLING (SING FACES, POSTS ETC)
DITCH EXCAVATIONS
GROUND CONDITIONS
WEATHER CONDITIONS

**KEY PLAN**



**PROJECT NUMBER**  
60160078  
**SHEET TITLE**  
LLANMAES VILLAGE  
FLOOD ALLEVIATION SCHEME  
KERBS LAYOUT  
SHEET 6 OF 8  
**SHEET NUMBER**  
60160078-ACM-SHT-30-01100-CT-1106

**KEY:**

	PROPOSED HALF BATTERED 75mm UPSTAND KERB
	PROPOSED HALF BATTERED 125mm UPSTAND KERB
	PROPOSED BULL NOSED 0mm UPSTAND KERB
	PROPOSED BUS STOP 200mm UPSTAND KERB
	OVERSPILL BUNDS \ BUNDS
	PROPOSED DITCH

**NOTES**

- THIS DRAWING SHALL BE READ IN CONJUNCTION WITH ALL OTHER RELEVANT DOCUMENTS INFORMATION RELATED TO THIS SCHEME.
- PROPOSED ITEMS SHALL BE IN LINE WITH HIGHWAY SPECIFICATION AND STANDARD DETAILS.
- PROPOSED KERB LINES TO BE LAID IN THE LOCATION AS PER SETTING OUT DRAWING.
- TRANSITION BETWEEN KERBS TO BE MINIMUM OF 1 TRANSITION KERB EACH SIDE.
- FOR STANDARD DETAILS REFER TO DRAWING 60160078-ACM-SHT-30-9000-CT-9000.

