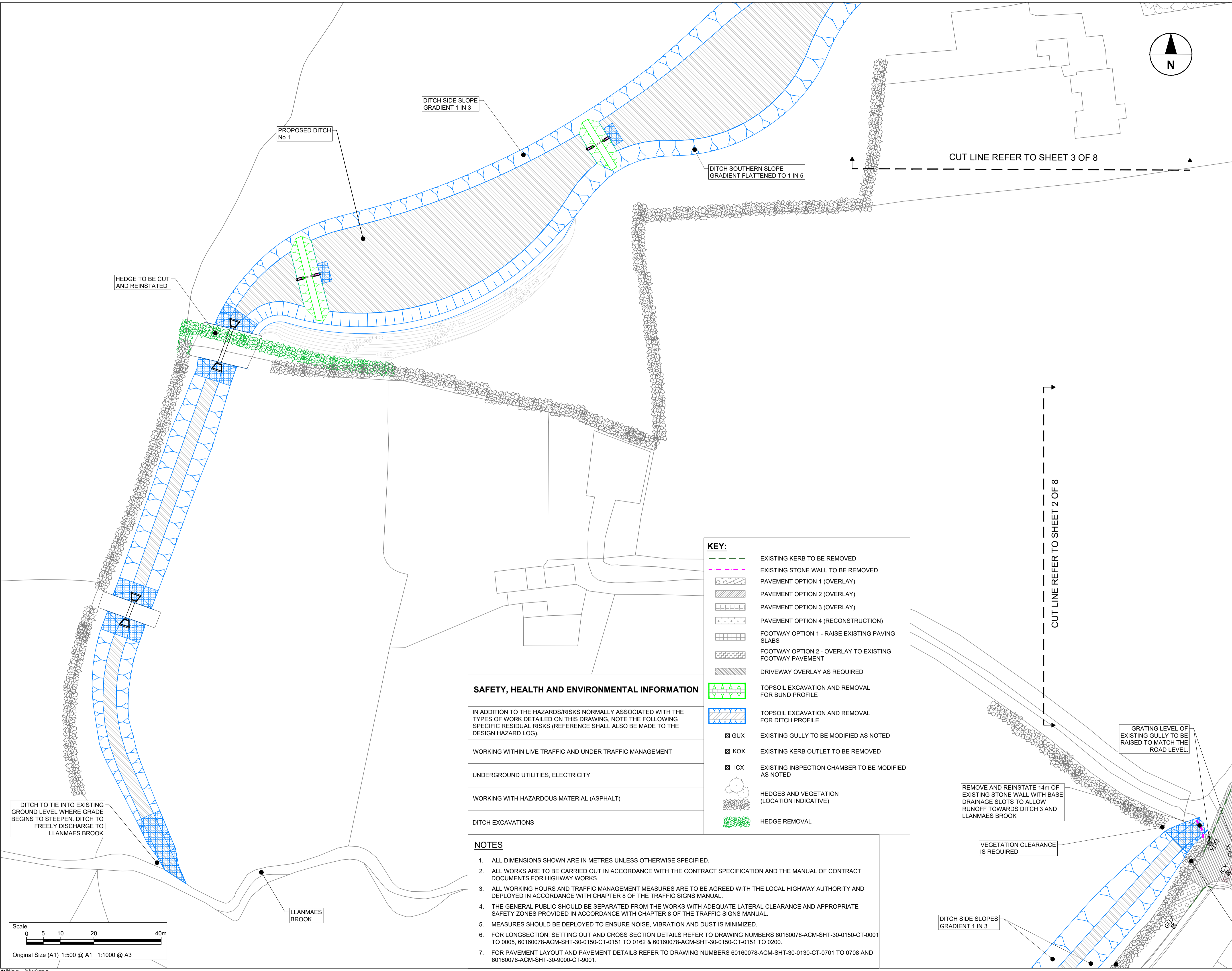
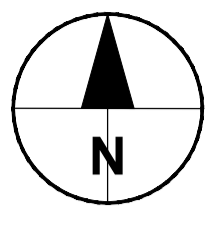




ISO A1 594mm x 841mm  
Approved: RM  
Checked: ATZ  
Designer: KP  
Project Management Initials:  
Last saved by: JONATHAN BLISSETT (2021-03-03) | Last Plotted: 2021-07-09  
Filename: P:\PROJECTS\HIGHWAYS - LLANMAES FLOOD ALLEVIATION SCHEME\0 CADDD\5.3 DRAWINGS\0200 - SITE CLEARANCE\0509148-ACM-SHT-30-0200-CT-0201-0208.DWG



CUT LINE REFER TO SHEET 3 OF 8

CUT LINE REFER TO SHEET 2 OF 8

**KEY:**

	EXISTING KERB TO BE REMOVED
	EXISTING STONE WALL TO BE REMOVED
	PAVEMENT OPTION 1 (OVERLAY)
	PAVEMENT OPTION 2 (OVERLAY)
	PAVEMENT OPTION 3 (OVERLAY)
	PAVEMENT OPTION 4 (RECONSTRUCTION)
	FOOTWAY OPTION 1 - RAISE EXISTING PAVING SLABS
	FOOTWAY OPTION 2 - OVERLAY TO EXISTING FOOTWAY PAVEMENT
	DRIVEWAY OVERLAY AS REQUIRED
	TOPSOIL EXCAVATION AND REMOVAL FOR BUND PROFILE
	TOPSOIL EXCAVATION AND REMOVAL FOR DITCH PROFILE
	GUX EXISTING GULLY TO BE MODIFIED AS NOTED
	KOX EXISTING KERB OUTLET TO BE REMOVED
	ICX EXISTING INSPECTION CHAMBER TO BE MODIFIED AS NOTED
	HEDGES AND VEGETATION (LOCATION INDICATIVE)
	HEDGE REMOVAL

### SAFETY, HEALTH AND ENVIRONMENTAL INFORMATION

- IN ADDITION TO THE HAZARDS/RISKS NORMALLY ASSOCIATED WITH THE TYPES OF WORK DETAILED ON THIS DRAWING, NOTE THE FOLLOWING SPECIFIC RESIDUAL RISKS (REFERENCE SHALL ALSO BE MADE TO THE DESIGN HAZARD LOG).
- WORKING WITHIN LIVE TRAFFIC AND UNDER TRAFFIC MANAGEMENT
- UNDERGROUND UTILITIES, ELECTRICITY
- WORKING WITH HAZARDOUS MATERIAL (ASPHALT)
- DITCH EXCAVATIONS

### NOTES

- ALL DIMENSIONS SHOWN ARE IN METRES UNLESS OTHERWISE SPECIFIED.
- ALL WORKS ARE TO BE CARRIED OUT IN ACCORDANCE WITH THE CONTRACT SPECIFICATION AND THE MANUAL OF CONTRACT DOCUMENTS FOR HIGHWAY WORKS.
- ALL WORKING HOURS AND TRAFFIC MANAGEMENT MEASURES ARE TO BE AGREED WITH THE LOCAL HIGHWAY AUTHORITY AND DEPLOYED IN ACCORDANCE WITH CHAPTER 8 OF THE TRAFFIC SIGNS MANUAL.
- THE GENERAL PUBLIC SHOULD BE SEPARATED FROM THE WORKS WITH ADEQUATE LATERAL CLEARANCE AND APPROPRIATE SAFETY ZONES PROVIDED IN ACCORDANCE WITH CHAPTER 8 OF THE TRAFFIC SIGNS MANUAL.
- MEASURES SHOULD BE DEPLOYED TO ENSURE NOISE, VIBRATION AND DUST IS MINIMIZED.
- FOR LONGSECTION, SETTING OUT AND CROSS SECTION DETAILS REFER TO DRAWING NUMBERS 60160078-ACM-SHT-30-0150-CT-0001 TO 0005, 60160078-ACM-SHT-30-0150-CT-0151 TO 0162 & 60160078-ACM-SHT-30-0150-CT-0151 TO 0200.
- FOR PAVEMENT LAYOUT AND PAVEMENT DETAILS REFER TO DRAWING NUMBERS 60160078-ACM-SHT-30-0130-CT-0701 TO 0708 AND 60160078-ACM-SHT-30-9000-CT-9001.

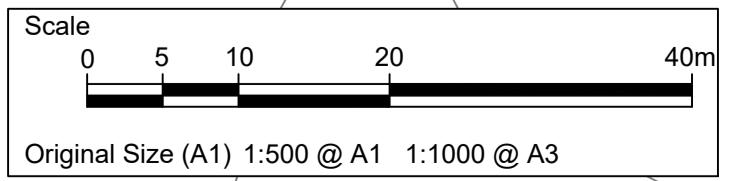
DITCH TO TIE INTO EXISTING GROUND LEVEL WHERE GRADE BEGINS TO STEEPEN. DITCH TO FREELY DISCHARGE TO LLANMAES BROOK

GRATING LEVEL OF EXISTING GULLY TO BE RAISED TO MATCH THE ROAD LEVEL.

REMOVE AND REINSTATE 14m OF EXISTING STONE WALL WITH BASE DRAINAGE SLOTS TO ALLOW RUNOFF TOWARDS DITCH 3 AND LLANMAES BROOK

VEGETATION CLEARANCE IS REQUIRED

DITCH SIDE SLOPES GRADIENT 1 IN 3

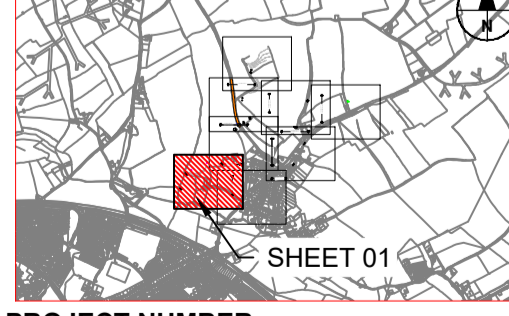


### STATUS

DETAILED DESIGN

ISSUE/REVISION	DATE	DESCRIPTION
C	07/07/2021	FOR PRICING
B	26/02/2021	DETAILED DESIGN
A	16/12/2020	DRAFT DETAILED DESIGN
IR		

### KEY PLAN



PROJECT NUMBER  
60160078

SHEET TITLE  
LLANMAES VILLAGE  
FLOOD ALLEVIATION SCHEME  
SITE CLEARANCE PLAN  
SHEET 1 OF 8

SHEET NUMBER  
60160078-ACM-SHT-30-0200-CT-0201

This drawing has been prepared for the use of AECOM's client. It may not be used, modified, reproduced or relied upon by third parties, except as agreed by AECOM or as required by law. AECOM accepts no responsibility, and denies any liability whatsoever, to any party that uses or relies on this drawing without AECOM's express written consent. Do not scale this document. All measurements must be obtained from the stated dimensions.