



PROJECT
LLANMAES VILLAGE FLOOD ALLEVIATION SCHEME

CLIENT
 VALE OF GLAMORGAN COUNCIL



CONSULTANT
 AECOM
 1 CALLAGHAN SQUARE
 CARDIFF
 CF10 5BT
 TEL: (029) 20674600
 FAX: (029) 20674699

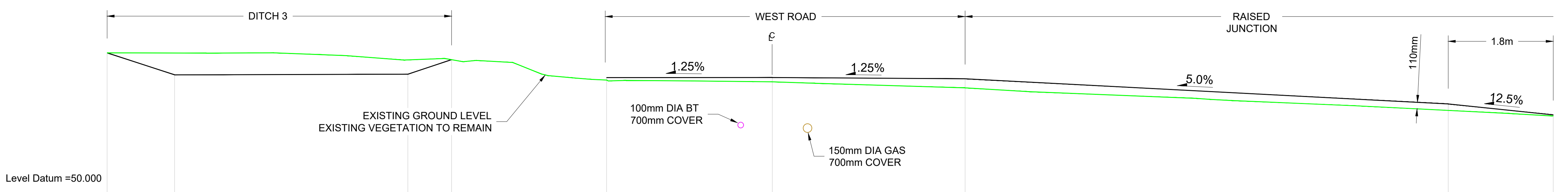
- NOTES**
1. TO BE READ IN CONJUNCTION WITH ALL OTHER RELEVANT DOCUMENTATION / INFORMATION.
 2. DIMENSIONS AND LEVELS ARE IN METRES UNLESS OTHERWISE STATED.
 3. DO NOT SCALE FROM THIS DRAWING, USE ONLY PRINTED DIMENSIONS.
 4. FOR CROSS SECTION REFERENCE PLAN REFER DRAWING NO. 60160078-ACM-SHT-30-0120-CT-0120
 5. REFER TO DRAWINGS NUMBER 60160078-ACM-SHT-30-0120-CT-0151 - 200 FOR DETAILED CROSS SECTIONS
 6. REFER TO DRAWINGS NUMBERS 60160078-ACM-SHT-30-0120-CT-0201 - 204 FOR JUNCTIONS DETAILS
 7. LOCATION AND DEPTH OF UTILITIES ARE INDICATIVE. ALL BURIES SERVICES ARE TO BE POSITIVELY LOCATED ON SITE PRIOR TO EXCAVATION; CAT SCANS SHALL BE COMPLETED PRIOR TO EXCAVATION WITH SERVICE LOCATIONS MARKED UP ON SITE. OPERATIVES SHALL EMPLOY HAND DIGGING METHODS WHEN WORKING IN CLOSE PROXIMITY TO BURIED SERVICES, STATUTORY UNDERTAKER'S PLANT SHALL BE PROTECTED AS NECESSARY. ADDITIONAL TRIAL PITS SHALL BE EXCAVATED AS REQUIRED.

STATUS
 DETAILED DESIGN

ISSUE/REVISION		
NO	DATE	DESCRIPTION
C	07/07/2021	FOR PRICING
B	26/02/2021	DETAILED DESIGN
A	16/12/2020	DRAFT DETAILED DESIGN
IR		

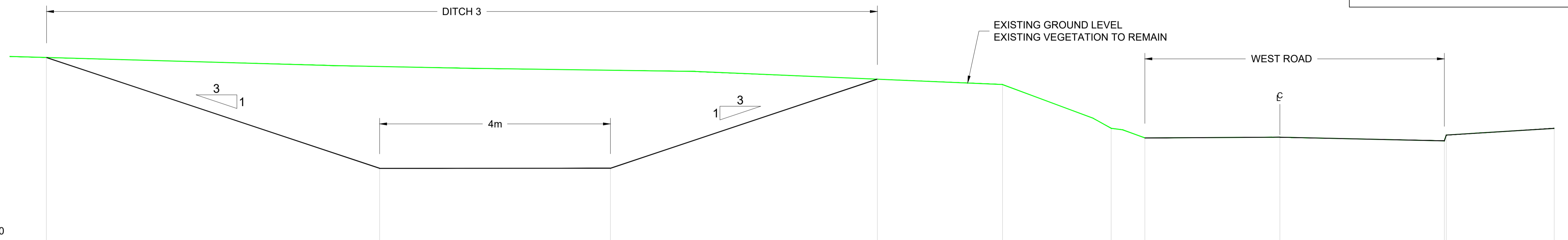
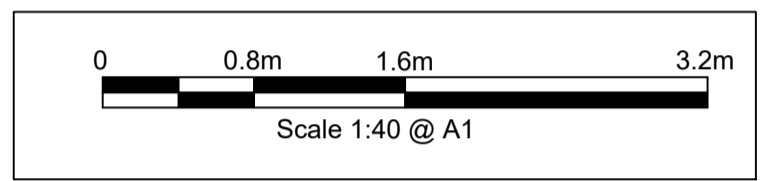
PROJECT NUMBER
 60160078
SHEET TITLE
 LLANMAES VILLAGE FLOOD ALLEVIATION SCHEME TYPICAL CROSS SECTION SHEET 6 OF 8
SHEET NUMBER

Project Management Initials: Designer: KP Checked: ATZ Approved: RM
 Last saved by: RHYS DAVIES(2021-03-02) Last Plotted: 2021-07-07
 Filename: F:\PROJECTS\HIGHWAYS - LLANMAES FLOOD ALLEVIATION SCHEMES\0 CADD\5.3 DRAWINGS\SERIES 0100 - PRELIM\30 0110 CROSS SECTIONS\60160078-ACM-SHT-30-0120-CT-0121-126.DWG



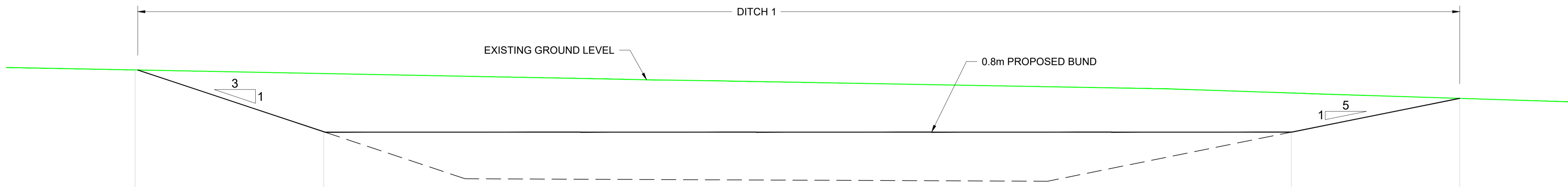
	52.415	52.033	52.044	52.296	52.283	52.021	51.985	51.987	51.966	51.529	51.341																	
PROPOSED	52.415	52.033	52.044	52.296	52.283	52.021	51.985	51.987	51.966	51.529	51.341																	
WIDTH	1.170		4.044	0.758	0.526	1.240	1.020	2.873	3.343	8.377	1.820																	
E.G.L	52.415	52.410	52.415	52.383	52.366	52.289	52.317	52.261	52.283	52.248	52.050	52.021	51.982	51.955	51.928	51.937	51.929	51.917	51.912	51.888	51.808	51.742	51.626	51.609	51.589	51.495	51.363	51.322

SECTION P



	52.245	50.324	50.326	51.869	50.850	50.863	50.801	50.901	51.016							
PROPOSED	52.245	50.324	50.326	51.869	50.850	50.863	50.801	50.901	51.016							
WIDTH		5.778	4.001	4.629	2.170	1.884	0.585	2.341	2.850	0.034	1.872					
E.G.L		52.106	52.060	52.003	51.780	51.777	51.191	51.018	50.992	50.850	50.863	50.860	50.801	50.901	50.940	51.016

SECTION Q



	60.458	59.390	60.269	59.390	59.969
PROPOSED	60.458	59.390	60.269	59.390	59.969
WIDTH	3.230		41.416	2.885	
E.G.L	60.500	60.297	60.288	60.131	60.050

SECTION R