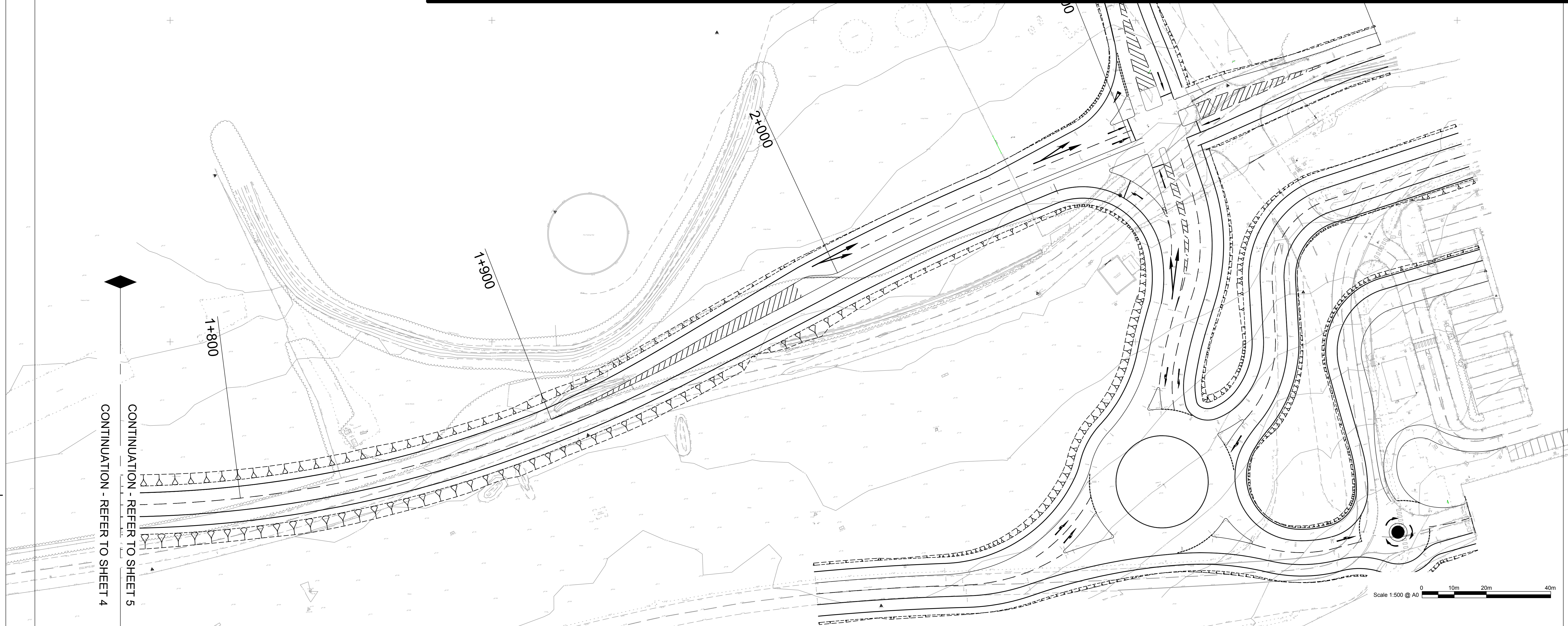


NOTES
 1. ALL DIMENSIONS SHOWN ARE IN METRES UNLESS OTHERWISE SPECIFIED

SAFETY, HEALTH AND ENVIRONMENTAL INFORMATION

In addition to the hazards/risks normally associated with the types of work detailed on this drawing, note the following specific residual risks (Reference shall also be made to the design hazard log).

Construction
 For Hazards Refer to Document: Safety in Design - Designers Residual Hazard Register



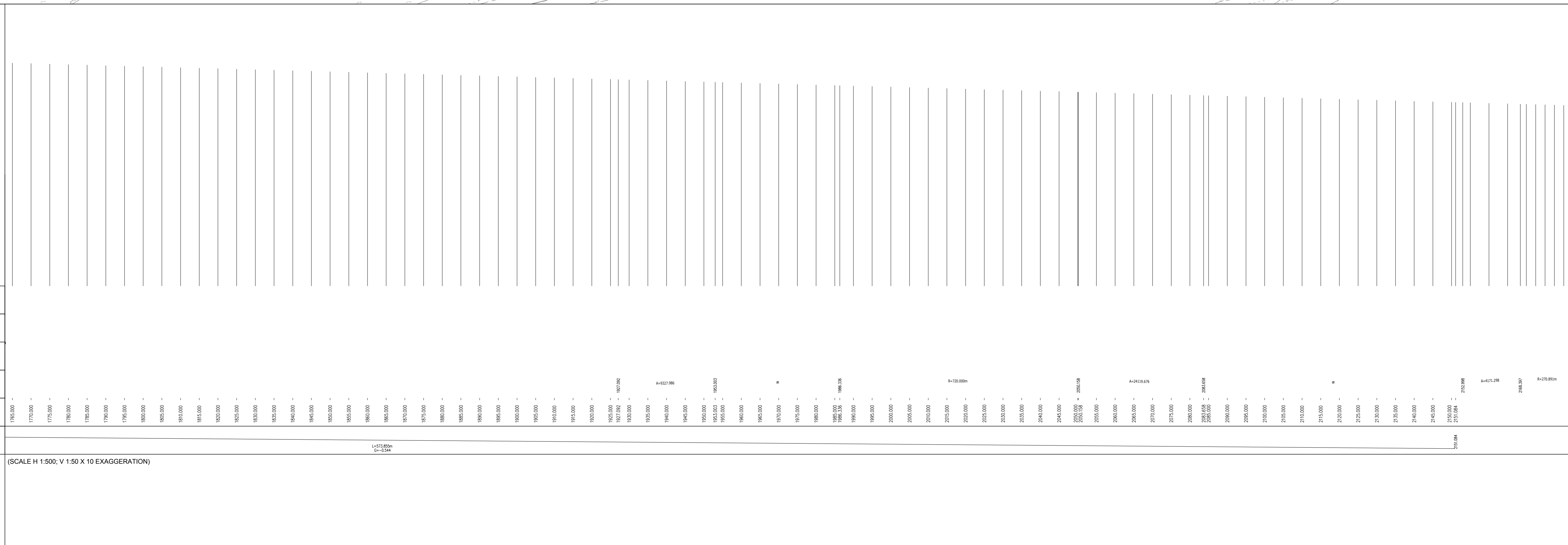
CONTINUATION - REFER TO SHEET 4
 CONTINUATION - REFER TO SHEET 5

Scale 1:500 @ A0
 0 10m 20m 40m

LEGEND

Level Datum = 31.000

Proposed Levels
Gradient
Existing Levels
Horizontal
Chainage
Vertical



(SCALE H 1:500; V 1:50 X 10 EXAGGERATION)

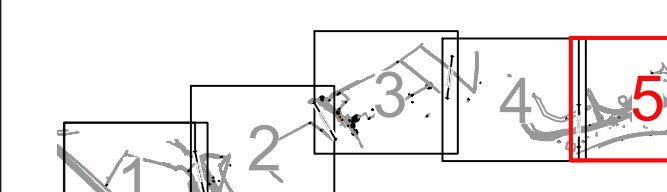
STATUS

FOR INFORMATION

ISSUE/REVISION

A	03-10-2016	JUNCTION AMENDMENTS
-	19-08-2016	DRAFT FOR COMMENT
IR	DATE	DESCRIPTION

KEY PLAN



PROJECT NUMBER
 60509148

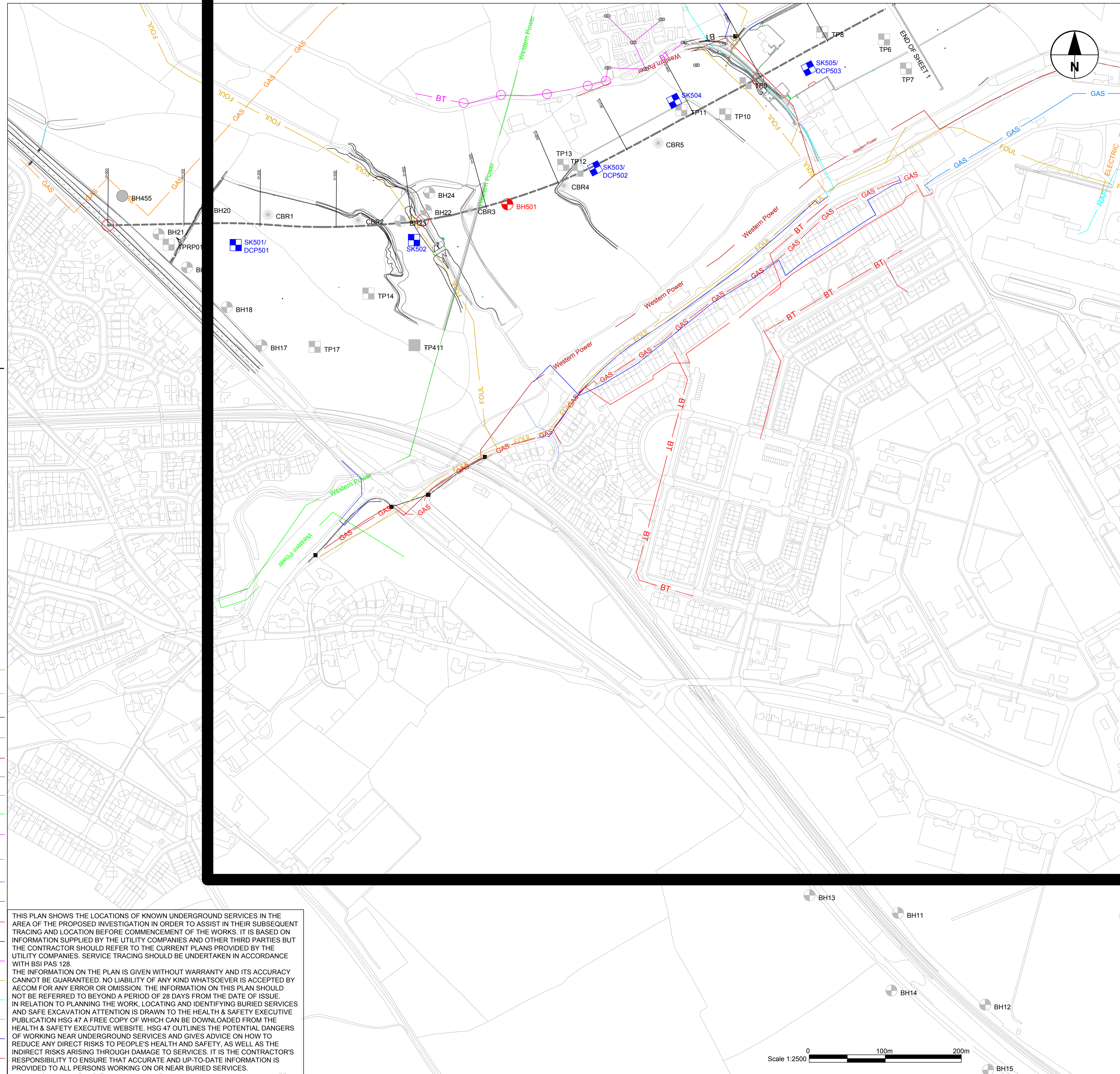
SHEET TITLE
 ST.ATHAN
 PLAN AND PROFILES
 SHEET 5 OF 5

SHEET NUMBER
 60509148-SHT-00-0000-CT-0605

KEY

PROPOSED KEY INFORMATION

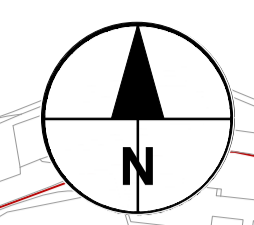
- BOREHOLE ● BH
 - TRIAL PIT ■ TP
 - DYNAMIC CONE PENETROMETER ■ DCP
 - SOAKAWAY TEST ■ SK
- HISTORICAL KEY INFORMATION
- APEX DRILLING (2003) ● BH
 - ENVIROS (2003) ■ TP
 - SOUTHERN GROUND TESTING (2003) ● CBR
 - SOIL MECHANICS (2009) ● BH
 - SOIL MECHANICS (2009) ■
- PROPOSED ROAD ALIGNMENT ---
- OVERHEAD CABLE UNKNOWN --- ELECTRIC
- RAF OWNED DUCT UNKNOWN --- RAF
- WESTERN POWER LOW VOLTAGE UNDERGROUND --- Western Power
- WESTERN POWER SERVICE UNDERGROUND --- Western Power
- WESTERN POWER 11KV UNDERGROUND --- Western Power
- WESTERN POWER PL UNDERGROUND --- Western Power
- WESTERN POWER 66KV UNDERGROUND --- Western Power
- WESTERN POWER 66KV OVERHEAD --- Western Power
- WESTERN POWER 132KV OVERHEAD --- Western Power
- WALES AND WEST UNDERGROUND HIGH PRESSURE --- GAS
- WALES AND WEST UNDERGROUND MEDIUM PRESSURE --- GAS
- WALES AND WEST UNDERGROUND LOW PRESSURE --- GAS
- BT DUCT --- BT
- BT UNDERGROUND --- BT
- BT OVERHEAD --- BT
- FOUL SEWER --- FOUL
- TRUNK SEWER --- W Water --- W Water
- SURFACE WATER SEWER --- W Water --- W Water
- DISTRIBUTION SEWER --- W Water --- W Water
- VIRGIN CABLE --- v Virgin --- v Virgin



THIS PLAN SHOWS THE LOCATIONS OF KNOWN UNDERGROUND SERVICES IN THE AREA OF THE PROPOSED INVESTIGATION IN ORDER TO ASSIST IN THEIR SUBSEQUENT TRACING AND LOCATION BEFORE COMMENCEMENT OF THE WORKS. IT IS BASED ON INFORMATION SUPPLIED BY THE UTILITY COMPANIES AND OTHER THIRD PARTIES BUT THE CONTRACTOR SHOULD REFER TO THE CURRENT PLANS PROVIDED BY THE UTILITY COMPANIES. SERVICE TRACING SHOULD BE UNDERTAKEN IN ACCORDANCE WITH BSI PAS 128.

THE INFORMATION ON THE PLAN IS GIVEN WITHOUT WARRANTY AND ITS ACCURACY CANNOT BE GUARANTEED. NO LIABILITY OF ANY KIND WHATSOEVER IS ACCEPTED BY AECOM FOR ANY ERROR OR OMISSION. THE INFORMATION ON THIS PLAN SHOULD NOT BE REFERRED TO BEYOND A PERIOD OF 28 DAYS FROM THE DATE OF ISSUE.

IN RELATION TO PLANNING THE WORK, LOCATING AND IDENTIFYING BURIED SERVICES AND SAFE EXCAVATION ATTENTION IS DRAWN TO THE HEALTH & SAFETY EXECUTIVE PUBLICATION HSG 47 A FREE COPY OF WHICH CAN BE DOWNLOADED FROM THE HEALTH & SAFETY EXECUTIVE WEBSITE. HSG 47 OUTLINES THE POTENTIAL DANGERS OF WORKING NEAR UNDERGROUND SERVICES AND GIVES ADVICE ON HOW TO REDUCE ANY DIRECT RISKS TO PEOPLE'S HEALTH AND SAFETY, AS WELL AS THE INDIRECT RISKS ARISING THROUGH DAMAGE TO SERVICES. IT IS THE CONTRACTOR'S RESPONSIBILITY TO ENSURE THAT ACCURATE AND UP-TO-DATE INFORMATION IS PROVIDED TO ALL PERSONS WORKING ON OR NEAR BURIED SERVICES.



PROJECT
**ST. ATHAN
 NORTHERN ACCESS
 ROAD**

CLIENT
WELSH GOVERNMENT

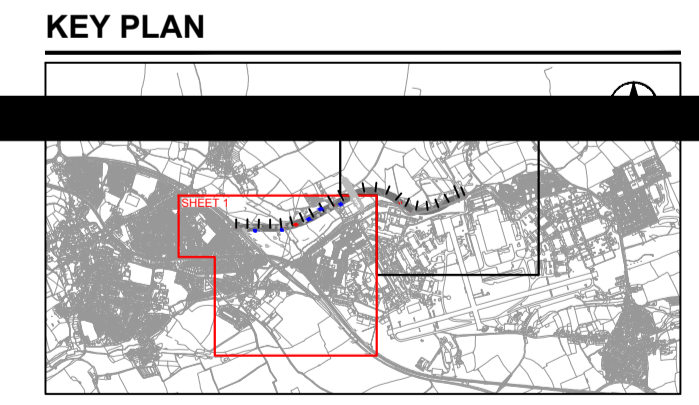
CONSULTANT
 AECOM
 1 CALLAGHAN SQUARE
 CARDIFF
 CF10 5BT
 TEL: (029) 20674600 FAX: (029) 20674699

NOTES

DRAFT

SAFETY, HEALTH AND ENVIRONMENTAL INFORMATION	
In addition to the hazards/risks normally associated with the types of work detailed on this drawing, note the following specific residual risks (Reference shall also be made to the design hazard log).	
Construction	
For Hazards Refer to Document: Safety in Design - Designers Residual Hazard Register	

ISSUE/REVISION		
NO	DATE	DESCRIPTION
A	09-09-2016	FOR APPROVAL
I/R	DATE	DESCRIPTION



PROJECT NUMBER
 60509148

SHEET TITLE
 ST ATHAN
 PROPOSED GROUND INVESTIGATION
 LOCATIONS
 SHEET 1 OF 2

SHEET NUMBER
 60509148-SHT-30-0000-CT-0652

This drawing has been prepared for the use of AECOM's client. It may not be modified, reproduced or relied upon by third parties, except as agreed by AECOM or as required by law. AECOM accepts no responsibility, and denies any liability, whatsoever, to any party that uses or relies on this drawing without AECOM's express written consent. All measurements must be obtained from the stated dimensions.

KEY

PROPOSED KEY INFORMATION

- BOREHOLE ● BHx
 - TRIAL PIT ■ TPx
 - DYNAMIC CONE PENETROMETER ■ DCPx
 - SOAKAWAY TEST ■ SKx
- HISTORICAL KEY INFORMATION
- APEX DRILLING (2003) ● BHx
 - ENVIROS (2003) ■ TPx
 - SOUTHERN GROUND TESTING (2003) ● CBRx
 - SOIL MECHANICS (2009) ● BHx
 - SOIL MECHANICS (2009) ■ TPx

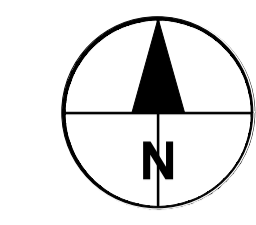
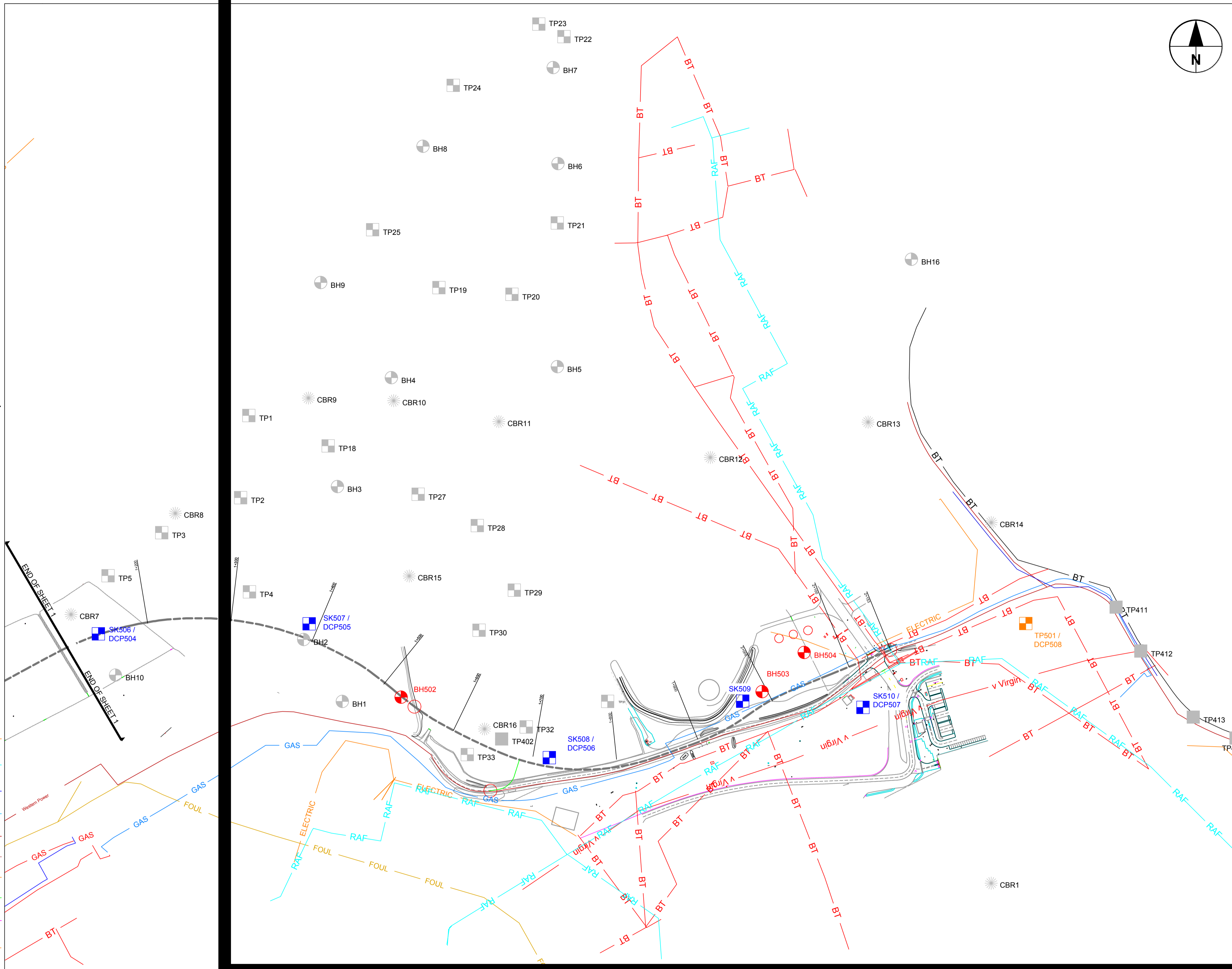
PROPOSED ROAD ALIGNMENT

- OVERHEAD CABLE UNKNOWN — ELECTRIC
- RAF OWNED DUCT UNKNOWN — RAF
- WESTERN POWER LOW VOLTAGE UNDERGROUND — Western Power
- WESTERN POWER SERVICE UNDERGROUND — Western Power
- WESTERN POWER 11KV UNDERGROUND — Western Power
- WESTERN POWER PL UNDERGROUND — Western Power
- WESTERN POWER 66KV UNDERGROUND — Western Power
- WESTERN POWER 66KV OVERHEAD — Western Power
- WESTERN POWER 132KV OVERHEAD — Western Power
- WALES AND WEST UNDERGROUND HIGH PRESSURE — GAS
- WALES AND WEST UNDERGROUND MEDIUM PRESSURE — GAS
- WALES AND WEST UNDERGROUND LOW PRESSURE — GAS
- BT DUCT — BT
- BT UNDERGROUND — BT
- BT OVERHEAD — BT
- FOUL SEWER — FOUL
- TRUNK SEWER — W Water
- SURFACE WATER SEWER — W Water
- DISTRIBUTION SEWER — W Water
- VIRGIN CABLE — v Virgin

THIS PLAN SHOWS THE LOCATIONS OF KNOWN UNDERGROUND SERVICES IN THE AREA OF THE PROPOSED INVESTIGATION IN ORDER TO ASSIST IN THEIR SUBSEQUENT TRACING AND LOCATION BEFORE COMMENCEMENT OF THE WORKS. IT IS BASED ON INFORMATION SUPPLIED BY THE UTILITY COMPANIES AND OTHER THIRD PARTIES BUT THE CONTRACTOR SHOULD REFER TO THE CURRENT PLANS PROVIDED BY THE UTILITY COMPANIES. SERVICE TRACING SHOULD BE UNDERTAKEN IN ACCORDANCE WITH BSI PAS 128.

THE INFORMATION ON THE PLAN IS GIVEN WITHOUT WARRANTY AND ITS ACCURACY CANNOT BE GUARANTEED. NO LIABILITY OF ANY KIND WHATSOEVER IS ACCEPTED BY AECOM FOR ANY ERROR OR OMISSION. THE INFORMATION ON THIS PLAN SHOULD NOT BE REFERRED TO BEYOND A PERIOD OF 28 DAYS FROM THE DATE OF ISSUE.

IN RELATION TO PLANNING THE WORK, LOCATING AND IDENTIFYING BURIED SERVICES AND SAFE EXCAVATION ATTENTION IS DRAWN TO THE HEALTH & SAFETY EXECUTIVE PUBLICATION HSG 47 A FREE COPY OF WHICH CAN BE DOWNLOADED FROM THE HEALTH & SAFETY EXECUTIVE WEBSITE. HSG 47 OUTLINES THE POTENTIAL DANGERS OF WORKING NEAR UNDERGROUND SERVICES AND GIVES ADVICE ON HOW TO REDUCE ANY DIRECT RISKS TO PEOPLE'S HEALTH AND SAFETY, AS WELL AS THE INDIRECT RISKS ARISING THROUGH DAMAGE TO SERVICES. IT IS THE CONTRACTOR'S RESPONSIBILITY TO ENSURE THAT ACCURATE AND UP-TO-DATE INFORMATION IS PROVIDED TO ALL PERSONS WORKING ON OR NEAR BURIED SERVICES.



AECOM

PROJECT
**ST. ATHAN
NORTHERN ACCESS
ROAD**

CLIENT
WELSH GOVERNMENT

CONSULTANT
AECOM
1 CALLAGHAN SQUARE
CARDIFF
CF10 5BT
TEL: (029) 20674600 FAX: (029) 20674699

NOTES

DRAFT

SAFETY, HEALTH AND ENVIRONMENTAL INFORMATION

In addition to the hazards/risks normally associated with the types of work detailed on this drawing, note the following specific residual risks (Reference shall also be made to the design hazard log).

Construction
For Hazards Refer to Document: Safety in Design - Designers Residual Hazard Register

ISSUE/REVISION

NO	DATE	DESCRIPTION
A	09-09-2016	FOR APPROVAL
I/R	DATE	DESCRIPTION

KEY PLAN

PROJECT NUMBER
60509148

SHEET TITLE
ST ATHAN
PROPOSED GROUND INVESTIGATION
LOCATIONS
SHEET 2 OF 2

SHEET NUMBER
60509148-SHT-30-0000-CT-0653

This drawing has been prepared for the use of AECOM's client. It may not be modified, reproduced or relied upon by third parties, except as agreed by AECOM or as required by law. AECOM accepts no responsibility, and denies any liability, whatsoever, to any party that uses or relies on this drawing without AECOM's express written consent. Do not scale this document. All measurements must be obtained from the stated dimensions.