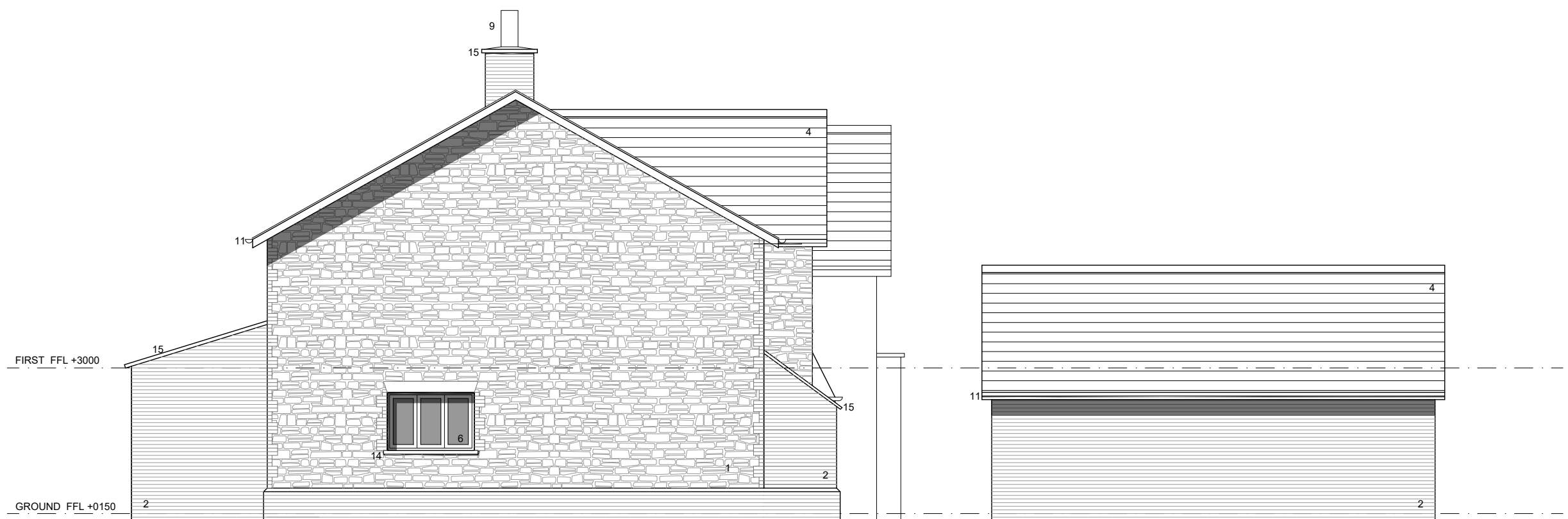


MATERIAL KEY

- 1. Bradstone Keinton Stone or similar
- 2. Facing brickwork (stock)
- 3. Brick arches / quoins / plinths
- 4. Cement fibre riven edge slate (*pantiles to Plot 7 only*)
- 5. Tile hanging
- 6. Dark coloured window and door frames with clear double glazing
- 7. Timber entrance doors
- 8. Colour coated pergola
- 9. Terracotta chimney pots
- 10. Lead dormers
- 11. Dark coloured fascias, soffits and rainwater goods
- 12. Rooflights
- 13. Reconstituted stone window surrounds
- 14. Reconstituted stone cills
- 15. Reconstituted stone copings
- 16. Glass balustrade
- 17. Metal balustrade
- 18. Dark coloured garage doors
- 19. Render
- 20. Timber posts



REAR ELEVATION (SOUTH FACING)



SIDE ELEVATION (EAST FACING)



C. W. ARCHITECTS Ltd
 Grosvenor House, 8 Park Grove, Cardiff CF10 3BN
 Tel : +44 (0)2920 223123 Fax : +44 (0)2920 388367 E-Mail office@cwarchitects.co.uk

| | | |
|--|-----------------------------------|--------------------|
| Project Name : Bolston House, Bonvilston | | Scale : 1:100 @ A3 |
| Project Ref : SP612 | | |
| Drawing Title : | PLOT FIVE - Proposed Elevations_2 | Scale : 1:100 @ A3 |
| Drawing Number : | P27 | |
| Revision: | PLANNING | Drawn by: rb |
| | | Date: Mar 2021 |