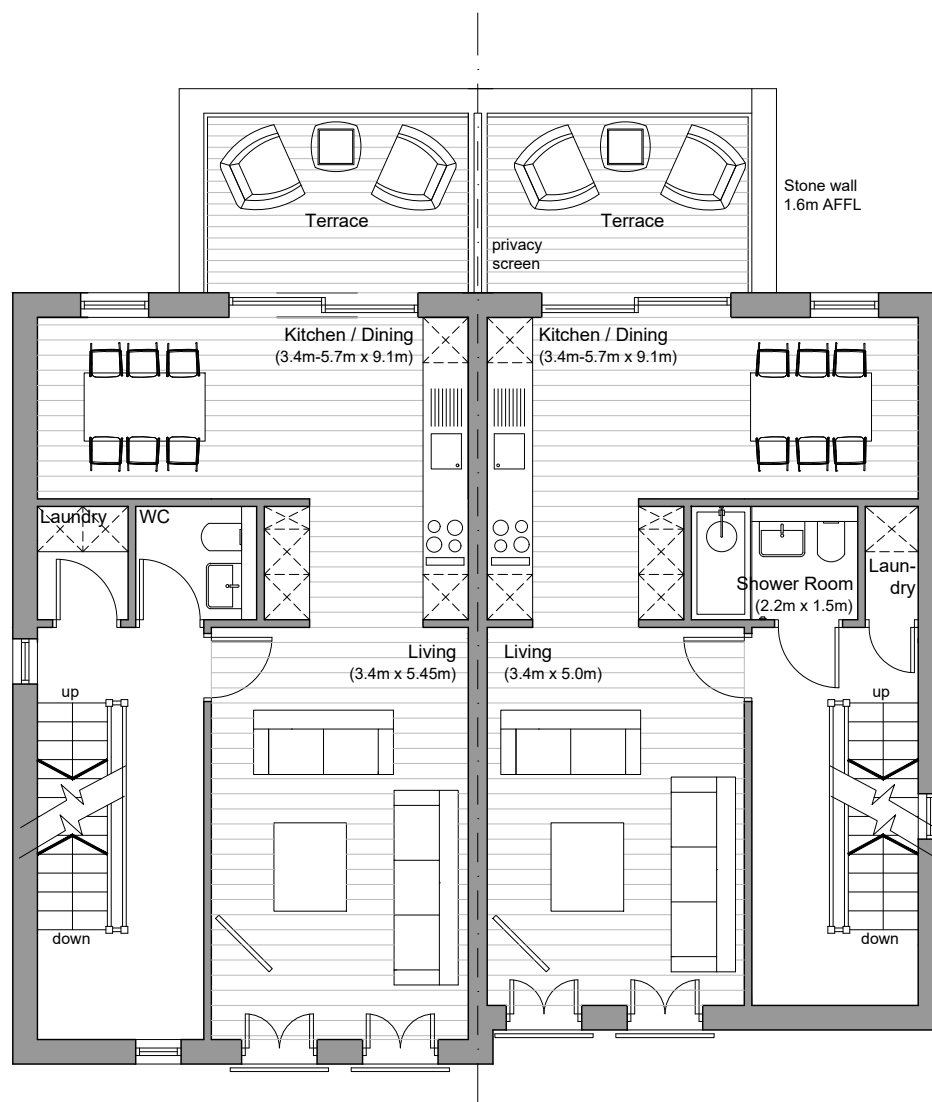
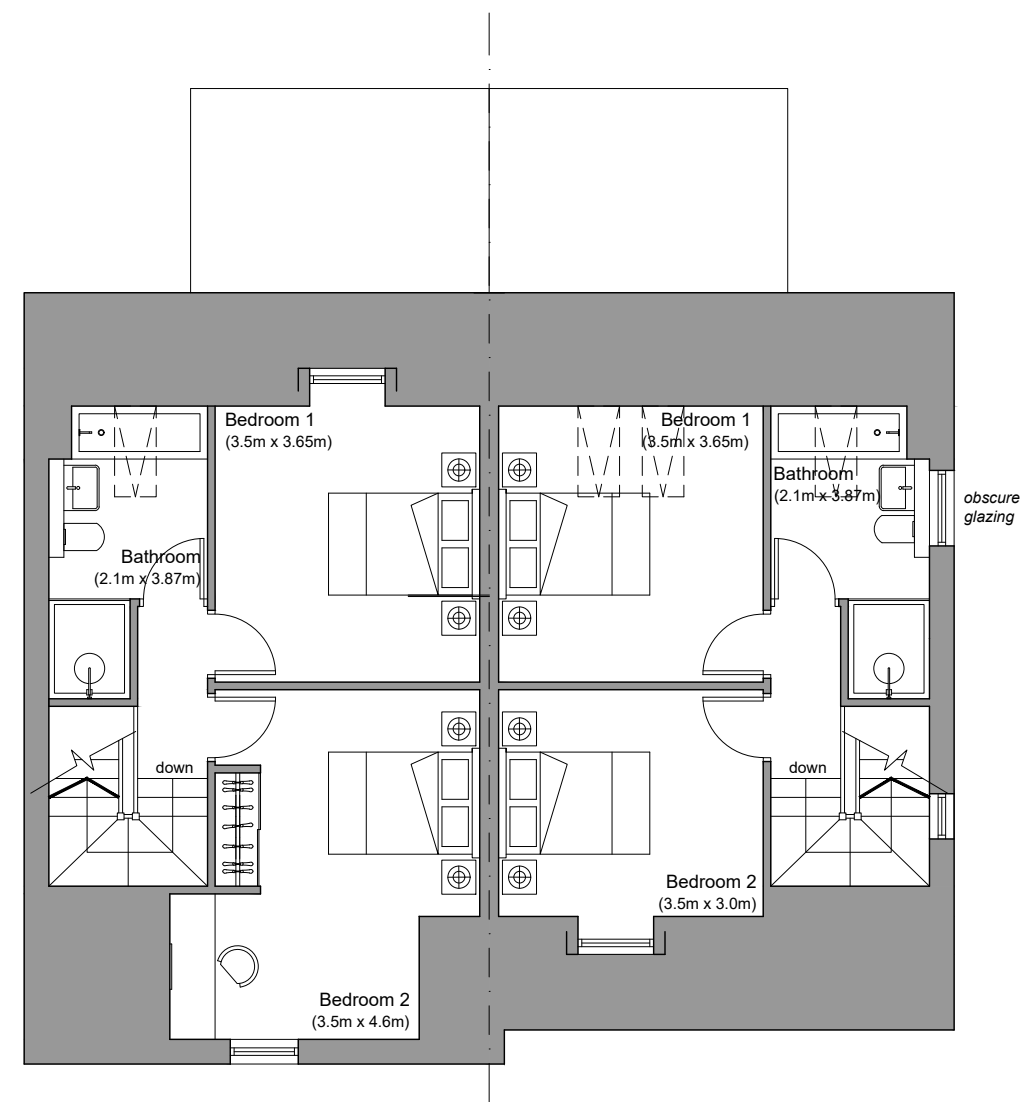


GROUND FLOOR

FLAT 1 (1-BED)- 57.6 sqm / 620 sqft TOTAL
 FLAT 2 (2-BED DUPLEX)- 106.2 sqm / 1143 sqft TOTAL
 FLAT 3 (1-BED)- 57.6 sqm / 620 sqft TOTAL
 FLAT 4 (2-BED DUPLEX)- 93.4 sqm / 1005 sqft TOTAL



FIRST FLOOR



SECOND FLOOR

REV A 11.02.22 Wall added to side of terrace
 Rear dormer to Flat 4 replaced with rooflights
 Window added to Flat 4 bathroom and stairs
 Hallway storage added to Flats 1 + 3; Hall windows omitted
 Doors changed to windows in the study (Flats 1 + 3)
 Kitchen layout amended (Flats 1 + 3)
 Bi-folding doors changed to sliding doors (Flats 1 + 3)
 Laundry room added; shower omitted; desk area omitted (Flat 2)
 Bi-folding doors changed to sliding doors (Flats 2 + 4)
 Laundry room added; desk area omitted (Flat 4)
 En-suite added to Bedroom 2 (Flat 2)
 Window to Bathroom omitted (Flat 2)



C. W. ARCHITECTS Ltd
 Grosvenor House, 8 Park Grove, Cardiff CF10 3BN
 Tel : +44 (0)2920 223123 Fax : +44 (0)2920 388367 E-Mail office@cwarchitects.co.uk

Project Name :	Bolston House, Bonvilston	
Project Ref :	SP612	
Drawing Title :	PLOTS ELEVEN - FOURTEEN - Proposed Floor Plans	Scale :
Drawing Number :	P42	1:100 @ A3
Revision:	A	Drawn by: rb
		Date: Nov' 2021