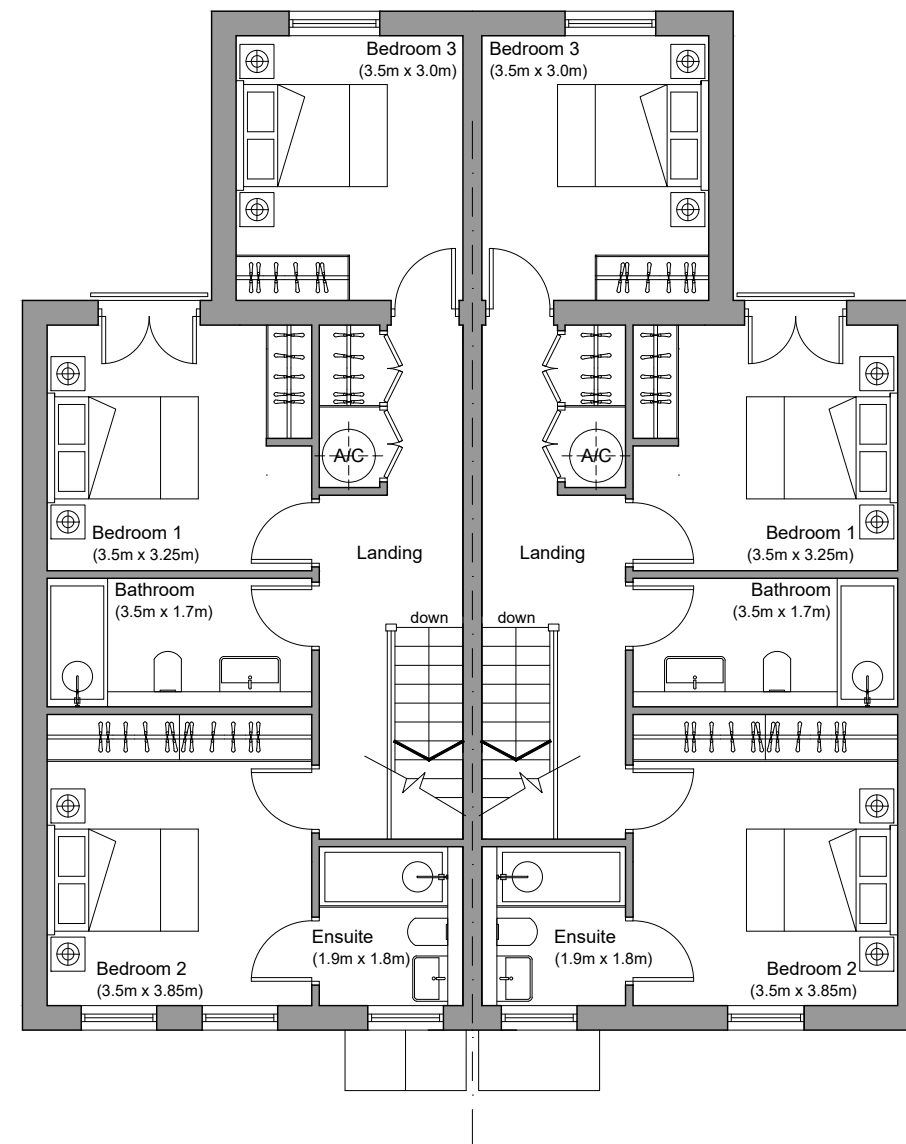


GROUND FLOOR
(60.9 sqm / 655 sqft - both plots)



FIRST FLOOR
(60.9 sqm / 655 sqft - both plots)



REV A 02.02.22 - Window added adjacent to front door (Plot Nine)
Bi-folding doors changed to sliding doors
Bath added to bathrooms; showers only to en-suites



C. W. ARCHITECTS Ltd
Grosvenor House, 8 Park Grove, Cardiff CF10 3BN
Tel: +44 (0)2920 223123 Fax: +44 (0)2920 388367 E-Mail: office@cwarchitects.co.uk

Project Name : Bolston House, Bonvilston
Project Ref : SP612

Drawing Title : PLOTS NINE + TEN - Proposed Floor Plans
Drawing Number : P38
Scale : 1:100 @ A3

Revision: A Drawn by: rb Date: Nov' 2021