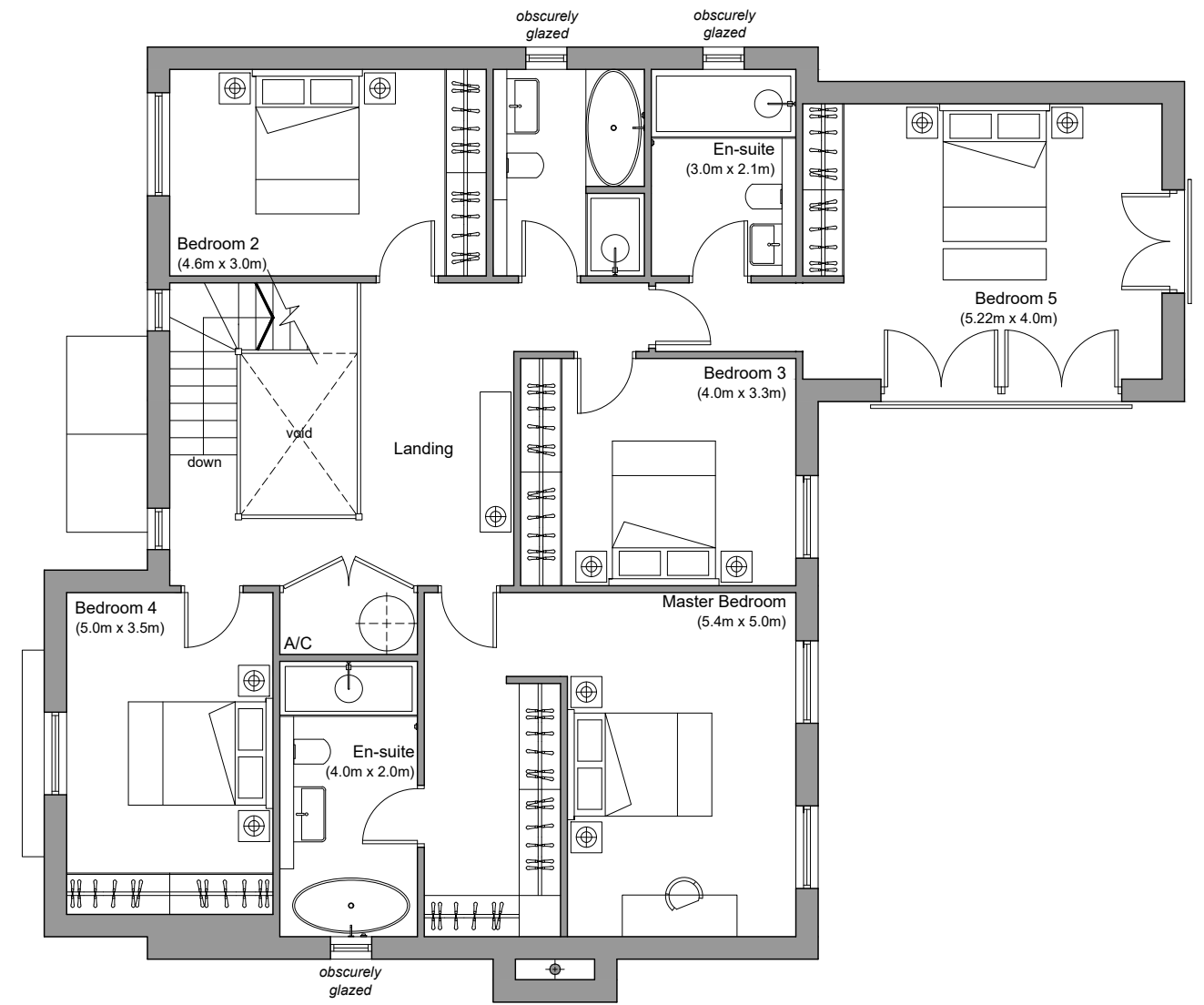


GROUND FLOOR

(140.1 sqm/ 1508 sqft)

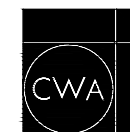


FIRST FLOOR

(142.4 sqm/ 1532 sqft)



REV A 02.02.22 - Porch omitted; new side door; utility made larger; kitchen window omitted
 Study made larger; living room made smaller
 Doors to Snug changed to fixed crittall type screen



C. W. ARCHITECTS Ltd
 Grosvenor House, 8 Park Grove, Cardiff CF10 3BN
 Tel : +44 (0)2920 223123 Fax : +44 (0)2920 388367 E-Mail: office@cwarchitects.co.uk

Project Name : Bolston House, Bonvilston
 Project Ref : SP612

Drawing Title : PLOT THREE - Proposed Floor Plans
 Drawing Number : P12
 Scale : 1:100 @ A3

Revision: A Drawn by: rb Date: Nov' 2021