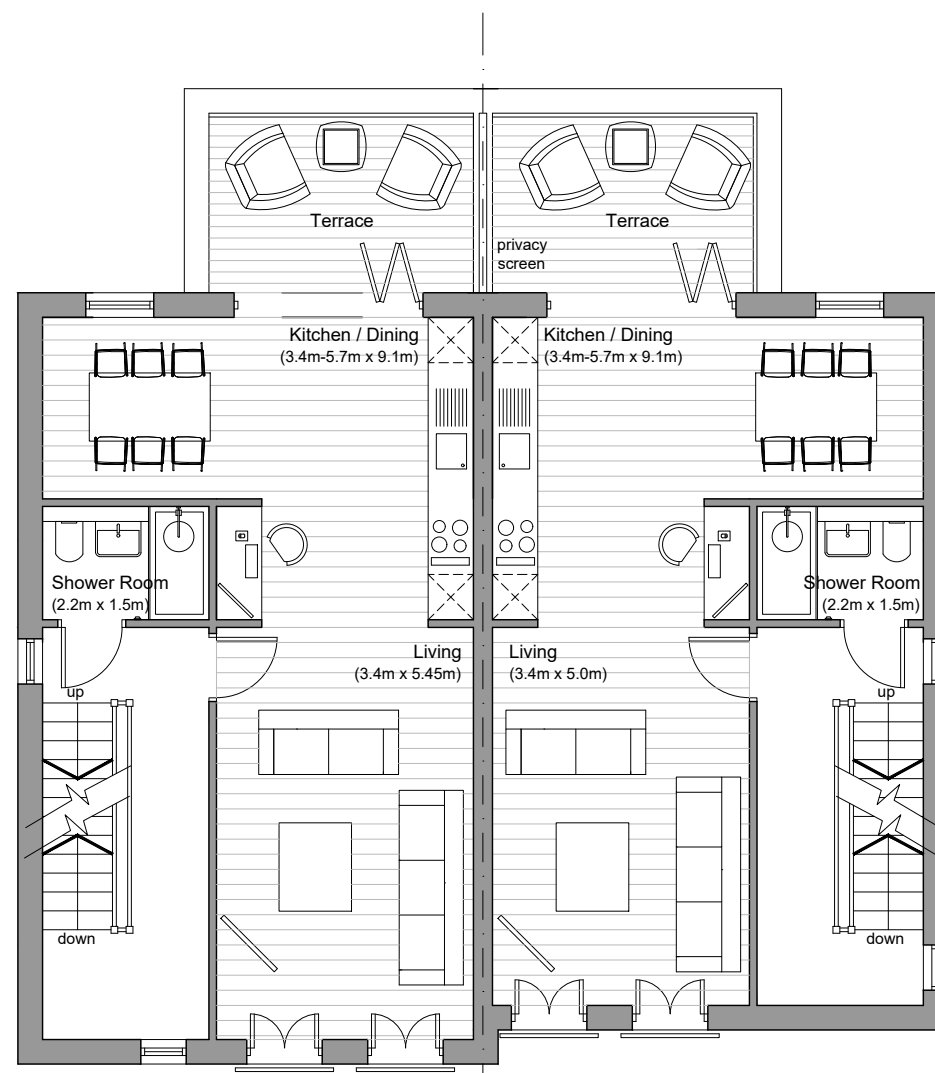
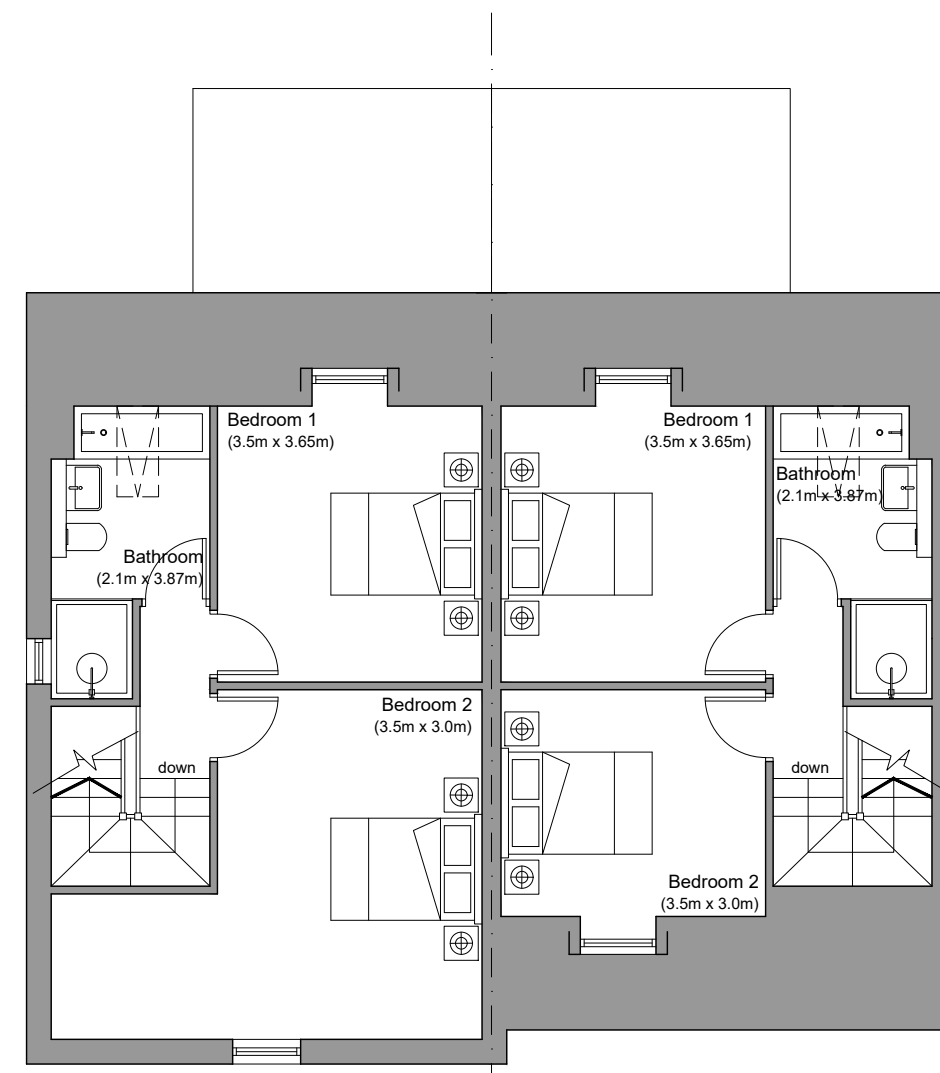


GROUND FLOOR

FLAT 1 (1-BED)- 57.6 sqm / 620 sqft TOTAL
 FLAT 2 (2-BED DUPLEX)- 106.2 sqm / 1143 sqft TOTAL
 FLAT 3 (1-BED)- 57.6 sqm / 620 sqft TOTAL
 FLAT 4 (2-BED DUPLEX)- 93.4 sqm / 1005 sqft TOTAL



FIRST FLOOR



SECOND FLOOR



C. W. ARCHITECTS Ltd
 Grosvenor House, 8 Park Grove, Cardiff CF10 3BN
 Tel : +44 (0)2920 223123 Fax : +44 (0)2920 388367 E-Mail office@cwarchitects.co.uk

Project Name : Bolston House, Bonvilston
 Project Ref : SP612

Drawing Title : PLOTS ELEVEN - FOURTEEN - Proposed Floor Plans
 Drawing Number : P42
 Scale : 1:100 @ A3

Revision: PLANNING Drawn by: rb Date: Nov' 2021