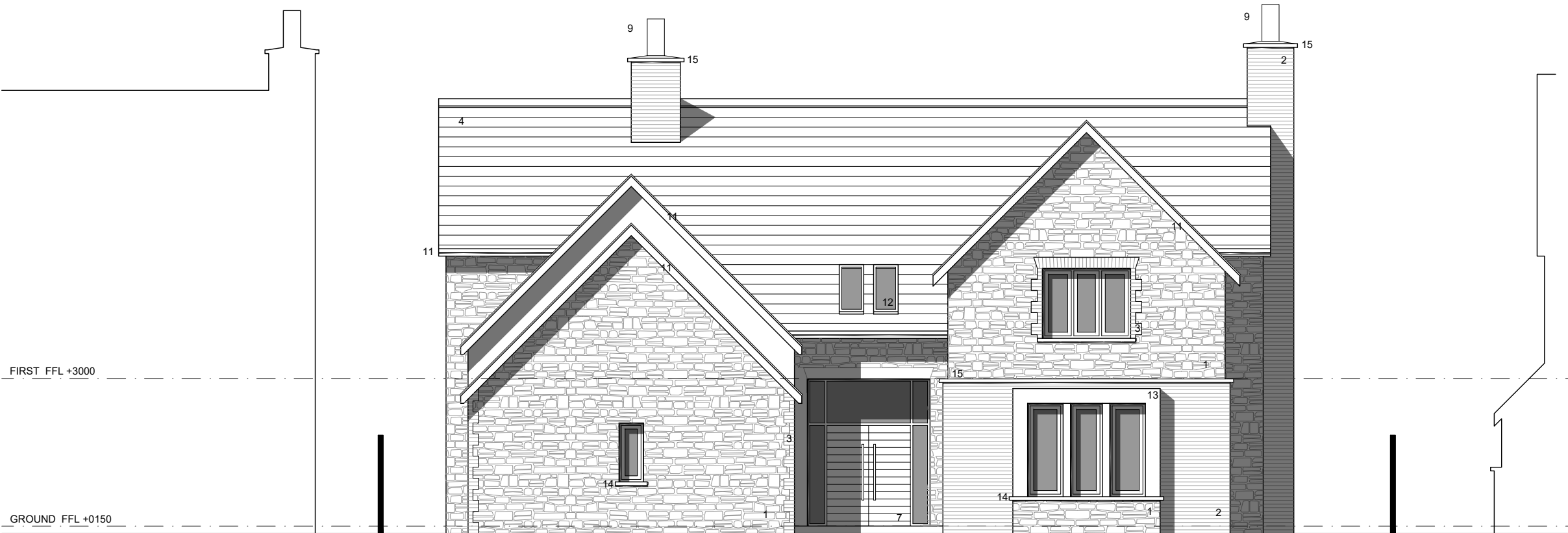


MATERIAL KEY

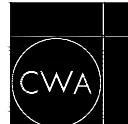
1. Bradstone Keinton Stone or similar
2. Facing brickwork (stock)
3. Brick arches / quoins / plinths
4. Cement fibre riven edge slate (*pan tiles to Plot 7 only*)
5. Tile hanging
6. Dark coloured window and door frames with clear double glazing
7. Timber entrance doors
8. Colour coated pergola
9. Terracotta chimney pots
10. Lead dormers
11. Dark coloured fascias, soffits and rainwater goods
12. Rooflights
13. Reconstituted stone window surrounds
14. Reconstituted stone cills
15. Reconstituted stone copings
16. Glass balustrade
17. Metal balustrade
18. Dark coloured garage doors
19. Render
20. Timber posts



FRONT ELEVATION (WEST FACING)



SIDE ELEVATION (SOUTH FACING)

	C. W. ARCHITECTS Ltd Grosvenor House, 8 Park Grove, Cardiff CF10 3BN Tel : +44 (0)2920 223123 Fax : +44 (0)2920 386367 E-Mail office@cwarchitects.co.uk	
	Project Name : Bolston House, Bonvilston Project Ref : SP612	
Drawing Title : PLOT TWO - Proposed Elevations_1 Drawing Number : P11	Scale : 1:100 @ A3	
Revision: PLANNING	Drawn by: rb	Date: Mar 2021