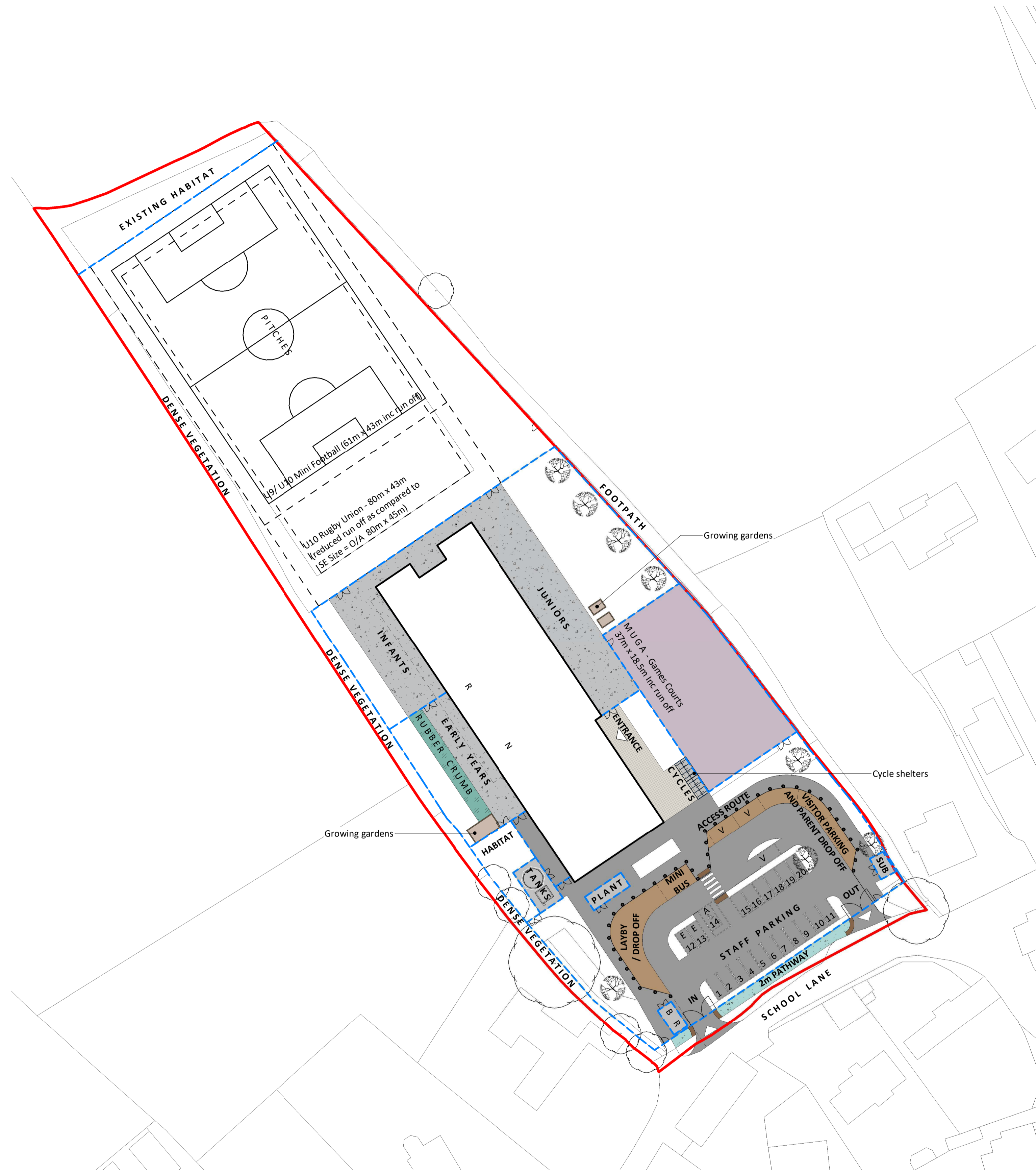


Responsibility is not accepted for errors made by others in scaling from this drawing.
All construction information should be taken from figured dimensions only.

Legend

- Site boundary.
- - - Fence.
Refer to drawing SNPS-STL-XX-XX-DR-L-9004 Fencing and Security Plan for details.
- Hard Landscape**
- Paving units to school building entrance. 'Academy' concrete paving units, by Charcon, 400x400x65mm in Grey colour. Build-ups to engineers spec, heavy loading build-ups to the maintenance zone.
- Tarmac surfacing to MUGA. Permeable tarmac to be confirmed by Drainage Engineers.
- Tarmac surfacing to vehicular zones. Heavy duty tarmac surfacing, recycled sub-base to gain BREEAM points. Build-ups to engineers details.
- Concrete surfacing to cycle shelter zone, plant, substation, refuse and sprinkler tank stores. Drainage to refuse store to engineers specification. In situ poured concrete with concrete 50mm pin kerb edging.
- Tarmac to playgrounds and maintenance zones. Build-ups to accommodate maintenance vehicle loading, recycled sub-base to gain BREEAM points. To engineers final specification.
- Tarmac surfacing to pedestrian pathway. Light duty tarmac surfacing, recycled sub-base to gain BREEAM points. Build-ups to engineers details.
- Resin Bound Gravel to service, visitor and drop off laybys. SureSet Permeable Paving, Butterscotch Colour, or similar approved. Build-ups to engineers specification.
- Play surfacing to nursery/reception zone. Wetpour surfacing, colour to match architectural facade panels. Critical fall height by DCM to 1.5m. Refer to manufacturers specification and build-ups.
- Thermoplastic paint markings to car parking and loading bays. White/yellow colour to British Standards.
- Tactile paving to pedestrian crossings and to dropped kerb roadway entrance/exit. British Standard 'Blister' paving in Charcoal colour, by Charcon. 400x400x50mm. Build-ups to engineers specification.
- External Furniture and Special Features**
- Growing gardens. 3No. raised timber sleeper planters, to be planted up by the school children.
- Cycle canopy and stands. 2No. 'Apollo Junior' cycle shelters 4100mm length. Base plated, Galvanised steel. To include 2No. 'Sheffield' cycle stand racks 10No. hoops in total. Galvanised steel, surface fixed.
- Bollards. 40no. 'Swansea' galvanised steel bollards, 1000mm height above ground, 114mm diameter, root fixed at 2.5m centres. To include reflective banding. Removable bollards proposed where maintenance is required, including drop kerbs for maintenance vehicle access.

NOTE:
For drainage information refer to engineers plans and details



Hard Landscape and External Furniture Plan
1 : 500

PL	PL07	30/09/20	Updated anotation and planting for planning
PL	PL06	17/09/20	Highways input update for discharge of conditions
PL	PL05	13/09/20	For discharge of conditions
PL	PL04	09/09/20	Amended for Planning Issue
S4	PO1	07/06/20	For Stage 3 Issue
PL	PL03	25/06/20	For Planning
PL	PL02	15/06/20	PAC Submission
PL	PL01	12/06/20	PAC Submission

STATUS	REV	DATE	DESCRIPTION	REVISED BY
CLIENT				CCM
Vale of Glamorgan Council				CHECKED BY
				CS
				ORIGINATOR NO
				152853

CONSULTANT
STRIDE TREGLOWN
www.stridetreglown.com © Stride Treglown Limited 2020
PROJECT
St Nicholas Primary School

DRAWING TITLE
Hard Landscape and External Furniture Plan

STATUS CODE
PL : Authorized and accepted SCALE
1 : 500@A1

DRAWING USAGE:
PROJECT - ORIGINATOR - VOLUME - LEVEL - TYPE - ROLE - CLASS - NUMBER STATUS_REVISION
SNPS-STL-XX-XX-DR-L-9002 PL_PL07