

Responsibility is not accepted for errors made by others in scaling from this drawing.
All construction information should be taken from figured dimensions only.

Legend

- Site boundary.
- Secure site boundary fencing, minimum 1.8m high. Weld mesh anti-climb fence, to Sbd standards e.g. Dulok double wire mesh fencing at 1830mm height, powder coated in black colour. With matching gates.
- Secondary secure fencing to playground zones. Weld mesh anti-climb fence, e.g. Dulok double wire mesh fencing at 1430mm height, powder coated in black colour. With matching gates.
- Fencing to refuse store and substation enclosure. Timber hit and miss fencing, with concrete support posts. Minimum 2400mm high. With matching gates. Roof not included.
- Fencing to MUGA. Weld mesh anti-climb fence, to Sbd standards e.g. Dulok double wire mesh fencing at 3000mm height, powder coated in black colour. With matching gates.
- Existing fence to habitat area to be retained, including gate access.
- Bollards.
Refer to drawing SNPS-STL-XX-DR-L-9002 Hard Landscape Plan for details.

- G1** Lockable pedestrian gate. Single leaf gate, min. 1.2m clear opening.
- G2** Lockable vehicular gate. Double leaf gate, min. 6.0m clear opening.
- G3** Lockable vehicular gate. Double leaf gate, min. 6.0m clear opening.
- G4** Lockable pedestrian gate. Single leaf gate, min. 1.2m clear opening.
- G5** Lockable maintenance gate to Bin Store enclosure. Double leaf gate, min. 2.0m clear opening.
- G6** Lockable maintenance gate to Substation. Double leaf gate, min. 2.4m clear opening.
- G7** Lockable maintenance gate to Plant. Double leaf gate, min. 2.0m clear opening.
- G8** Lockable pedestrian/ maintenance gate to Habitat area. Double leaf gate, min. 2.4m clear opening.
- G9** Lockable maintenance gate. Double leaf gate, min. 2.4m clear opening.
- G10** Lockable maintenance gate to Sprinkler tank. Double leaf gate, min. 2.0m clear opening.
- G11** Lockable pedestrian/ maintenance gate to Habitat area. Double leaf gate, min. 2.4m clear opening.
- G12** Lockable pedestrian/ maintenance gate. Double leaf gate, min. 2.4m clear opening.
- G13** Lockable pedestrian/ maintenance gate. Double leaf gate, min. 2.4m clear opening.
- G14** Lockable pedestrian/ maintenance gate. Double leaf gate, min. 2.4m clear opening.
- G15** Pedestrian/ maintenance gate. Double leaf gate, min. 1.2m clear opening.
- G16** Lockable pedestrian/ maintenance gate. Double leaf gate, min. 2.4m clear opening.
- G17** Lockable pedestrian gate. Single leaf gate, min. 1.2m clear opening.
- G18** Lockable maintenance gate. Double leaf gate, min. 2.4m clear opening.

PL	PL03	29/06/20	For Planning
PL	PL02	15/06/20	PAC Submission
PL	PL01	12/06/20	PAC Submission

STATUS	REV	DATE	DESCRIPTION	REVISED BY
CLIENT				CCM
CHECKED BY				CS
ORIGINATOR NO				152853

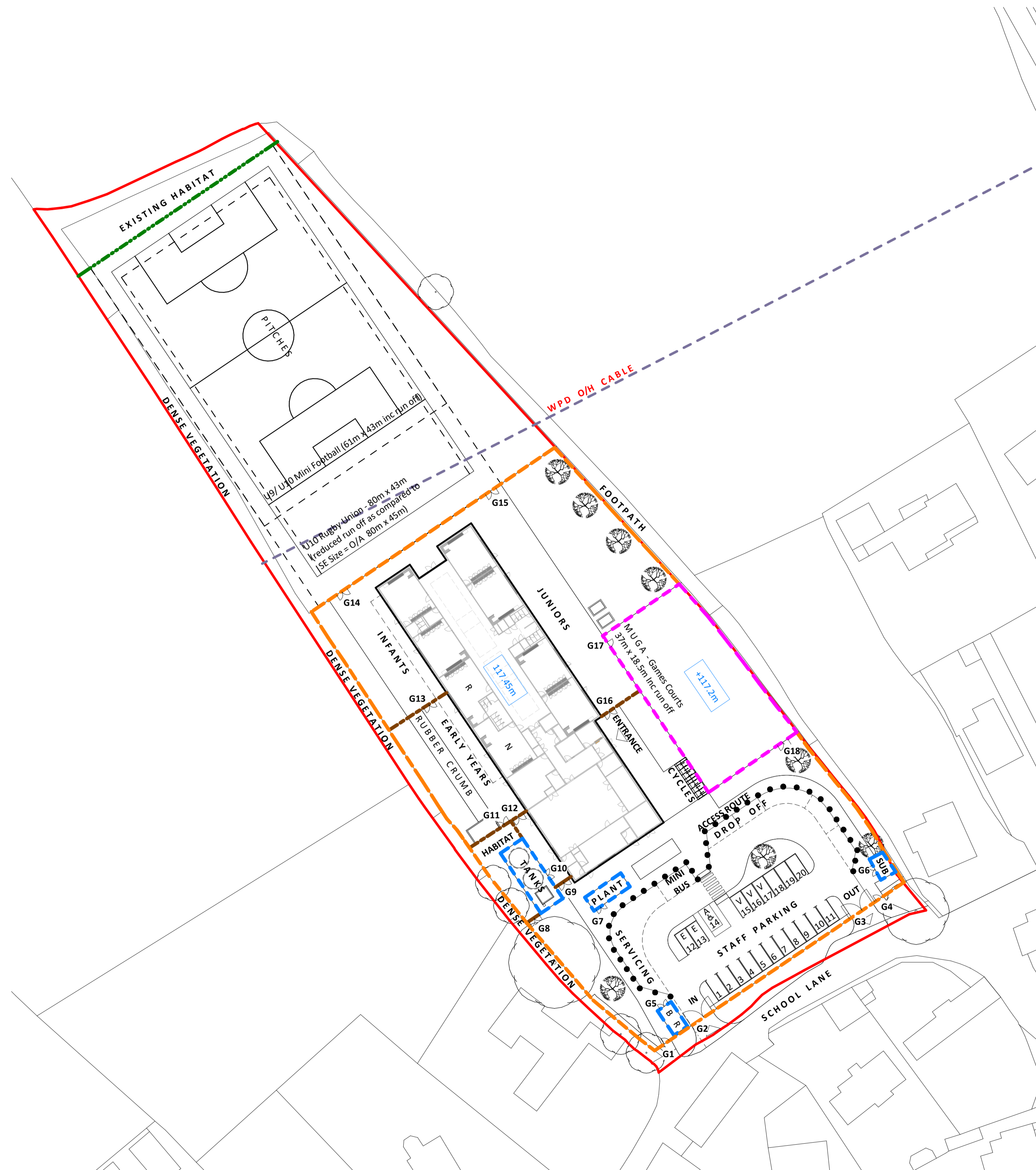
CONSULTANT
STRIDE TREGLOWN
 www.stride-treglow.com © Stride Treglow Limited 2020
 PROJECT

St Nicholas Primary School

DRAWING TITLE
Fencing and Site Security Plan

STATUS CODE
PL : Authorized and accepted SCALE
1 : 500@A1

DRAWING USAGE:
 PROJECT - ORIGINATOR - VOLUME - LEVEL - TYPE - ROLE - CLASS - NUMBER STATUS_REVISION
SNPS-STL-XX-DR-9004 PL_PL03



Fencing and Site Security Plan
 1 : 500