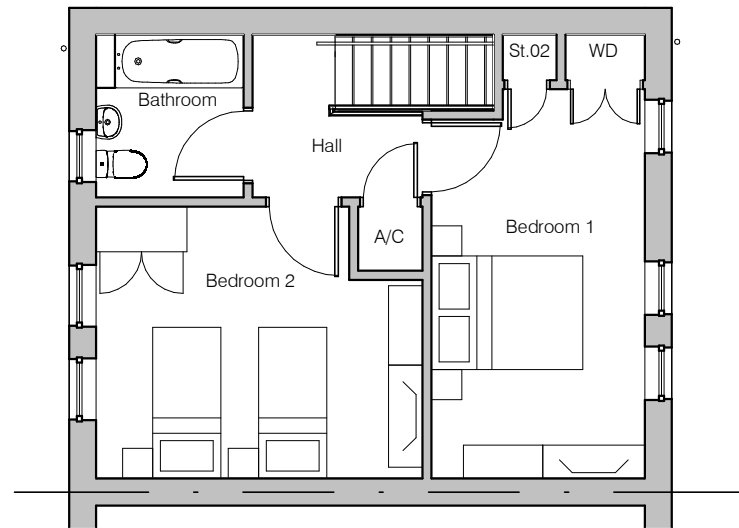


Revisions

A Elevation material key revised & notes added 24 Sep '19



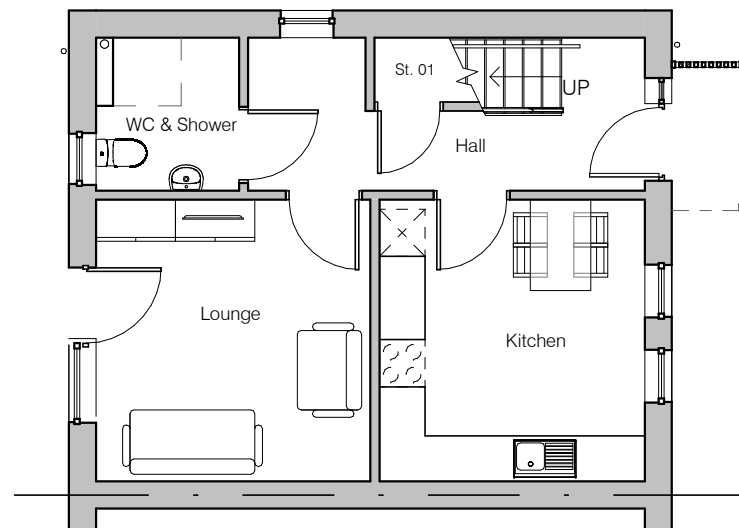
First Floor Plan



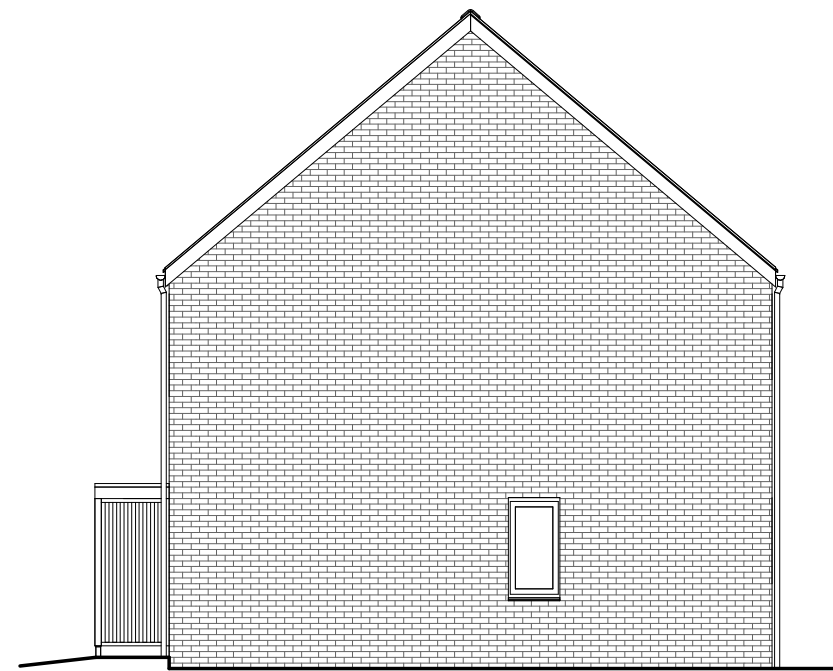
Front Elevation



Rear Elevation



Ground Floor Plan



Side Elevation

Elevation Material Key

Wall

Brickwork Type 01- Grey, stock, light textured facing brickwork with neutral mortar

Stonework Stone or reconstituted facing stonework

Aluminium coping system to all parapet walls, RAL 7036

Windows and Doors

Window & Rear doors Double glazed, PVCu, Pebble Grey- RAL 7032

Front Doors Composite GRP units, Pebble Grey- RAL 7032

Cills Powder-coated aluminium, RAL 7036

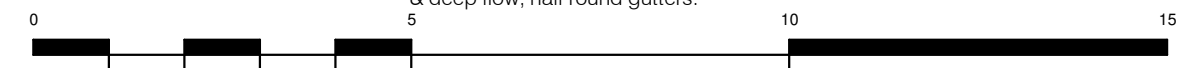
Roof

Pitched Roof Fibre cement slate tiles. Colour- Blue/Grey

Entrance Canopy Composite GRP, RAL 7036, timber posts

Fascias & Soffits Power coated aluminium, RAL 7036

Gutters & Downpipes & Hoppers Powder coated aluminium circular downpipes & deep flow, half round gutters.



Notes:

Read in conjunction with all other relevant project drawings and schedules.

Drawings must not be scaled and any discrepancies must be reported immediately.

Drawings must be printed in colour to ensure all elements are clearly identified.

Ensure this document is only used for its intended purpose, the suitability is defined by the status code below. Pentan accepts no liability if used for any purpose other than that specifically stated.

Service penetrations: Service extract terminals and flues are to be rectangular, flush and colour matched to surrounding brick/slate. All locations are to be confirmed by M&E consultant, architect and approved by LPA.

pentan
architects

22 Cathedral Road
Cardiff CF11 9LJ

t: 029 2030 9010
info@pentan.co.uk

Project
Aberthin Road, Cowbridge

Client
Hafod Resources

Drawing Title

2B4P House Floor Plans & Elevations

Date
AUG '19

Scale
1 : 100 @ A3

Drawing No.
3703 / PA / 227

Rev.
A

NOTES Do not scale. All dimensions are in millimetres unless stated otherwise