



**Arboricultural Impact Assessment
for
The Former Cowbridge Comprehensive School
Aberthin Road, Cowbridge**

*Inspected by:-
Julian Wilkes BSc.For, MSc.Land Man, MIC.For, TechArborA
Treescene Ltd
The Walled Garden
Old Coedarhydyglyn
St Nicholas
Cardiff
CF5 6SG
Tel No. 029 20599300*

19th November, 2018

**Registered Office: Treescene Limited
The Walled Garden, Old Coedarhydyglyn, St. Nicholas, Cardiff CF5 6SG
Tel. 029 205 99300 Email. trees@treescene.co.uk**

1. **BRIEF**

I have been instructed by Mr Steffan Harries of LRM Planning to prepare an Arboricultural Impact Assessment (AIA) in relation to a proposed development on land at the former Cowbridge Comprehensive School, Aberthin Road, Cowbridge.

2. **TREE SURVEY AND PLAN**

The information within this document is based on the Treescene Tree Survey 15.10.18 and the attached Treescene AIA Plan 11/2018.

3. **TREES TO BE REMOVED**

a) Arboricultural Reasons

Trees T1, T2, T11, T12, T14 and T17 are recommended for removal in the Tree Survey due to poor quality (U category).

b) To Facilitate Development

The following trees are proposed for removal to accommodate the proposed development; T5, T7, T8, T13, T15 and T16.

These are all C category (low quality) except T15 which is B category (moderate quality)

All trees to be removed are indicated on the attached Treescene AIA plan 11/2018.

4. **TREE PRUNING**

No pruning is required at this time to the trees to be retained.

5. **ROOT PROTECTION AREA (RPA) INCURSIONS**

The proposed car parking area to the rear of the development conflicts slightly with the RPAs of retained trees T3 and T4; the incursion of the car park into the RPA is more significant but less than the tolerable threshold of 20% as detailed in BS5837:2012. In order to avoid any adverse impacts on the health and stability of the good quality retained trees on the north-west boundary the car park zones within the RPAs will be installed utilising special “no-dig” construction techniques as set out in BS5837:2012. The specific construction methodology should be detailed in an Arboricultural Method Statement (AMS).

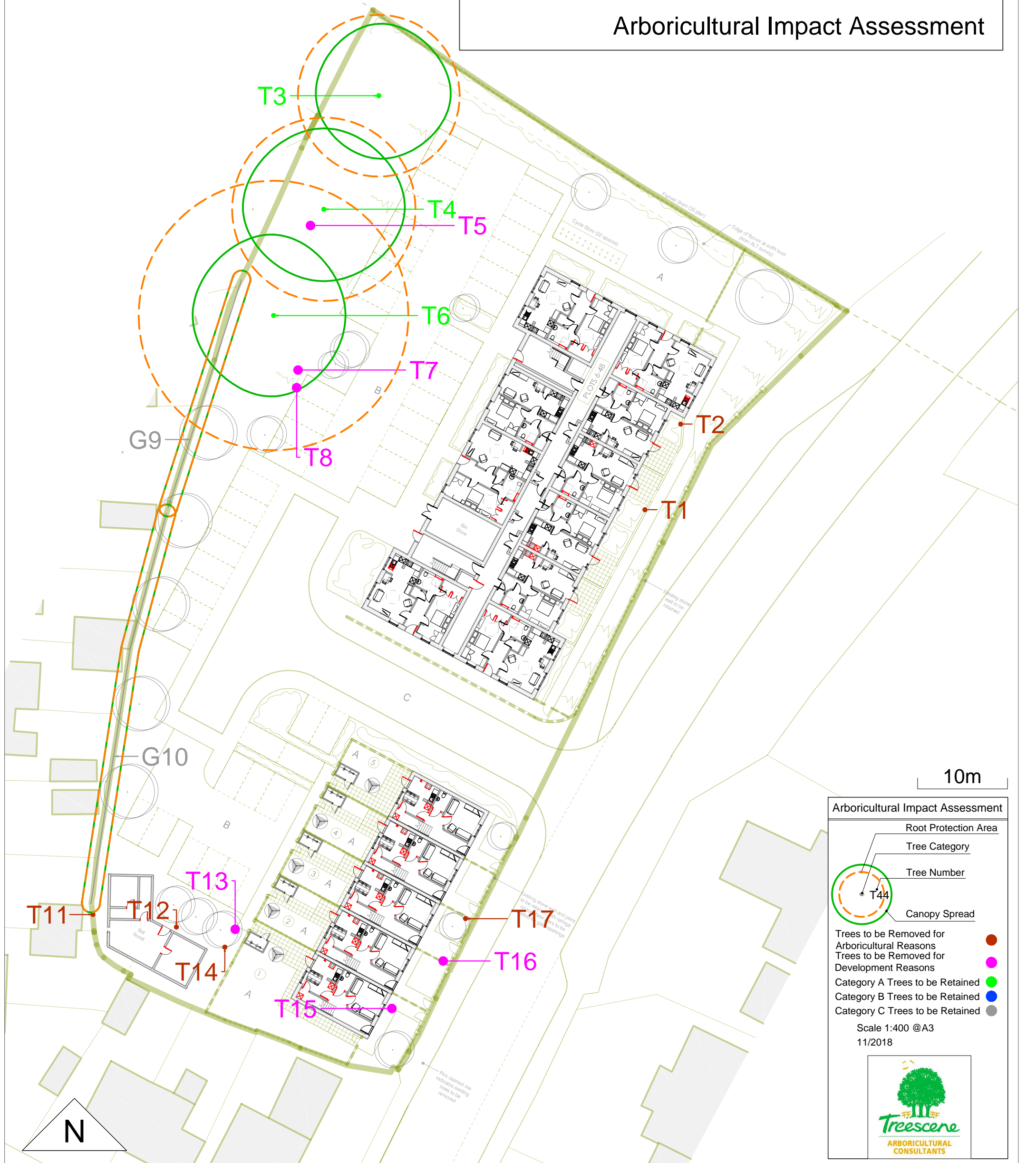
6. **PROTECTION OF RETAINED TREES**

All trees to be retained should be protected by fencing in accordance with the details in BS5837:2012. The implementation of the tree protection on site should be in compliance with a site specific Tree Protection Plan (TPP) and Arboricultural Method Statement (AMS).

A draft TPP is attached.

The Former Cowbridge Comprehensive School Cowbridge

Arboricultural Impact Assessment



Arboricultural Impact Assessment

- Root Protection Area
- Tree Category
- Tree Number
- Canopy Spread

Trees to be Removed for Arboricultural Reasons ●

Trees to be Removed for Development Reasons ●

Category A Trees to be Retained ●

Category B Trees to be Retained ●

Category C Trees to be Retained ●

Scale 1:400 @A3
11/2018