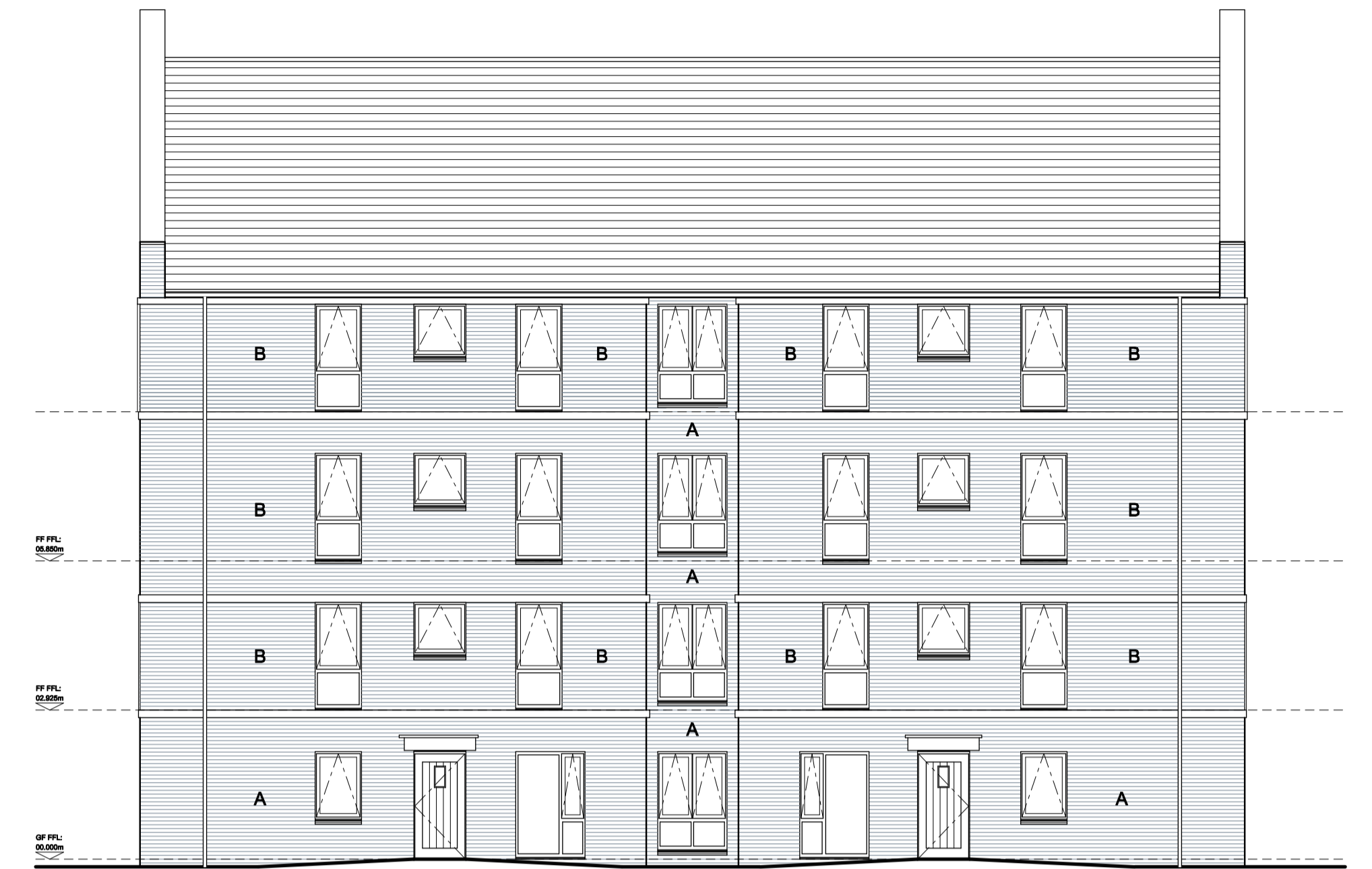




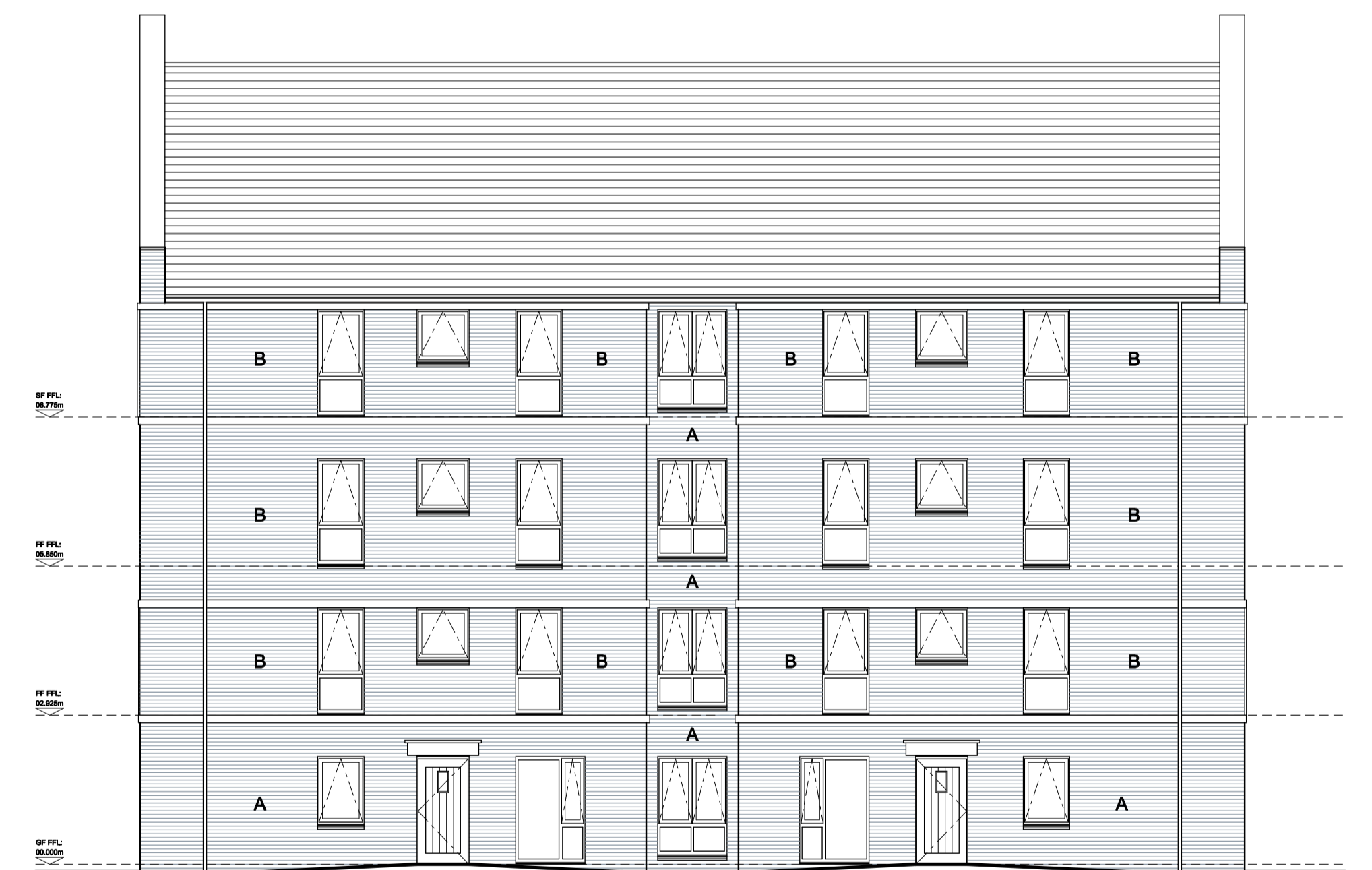
Front Elevation (Aberthin Road)



Side Elevation (north)



Rear Elevation (west)



Side Elevation (south)

Finishes

Walls
 A - Buff multi stock facing brickwork to ground floor.
 B - Dark stock facing brickwork to upper three storeys.

Pitched Roof
 Cambrian slate tile (grey).

Windows and Doors
 Dark grey PVCu (RAL 7016). GRP entrance doors to individual flats. Aluminium entrance doors to communal areas.

Window Sills
 65mm re-constituted stone sills with no stools.

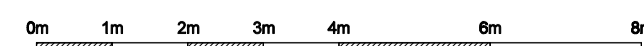
Window Surrounds and Banding
 150mm concrete banding.

Canopies
 Dark grey GRP.

Fascias
 Dark grey PVCu (RAL 7016).

Rainwater Goods
 Black PVCu.

Balconies
 Balcony framework to be galvanised steel frame painted black.
 Balustrades/handrails to be black P.P.C galvanised steel.



pentan
 architects

22 Cathedral Road
 Cardiff CF11 9LJ
 t: 029 2030 9010
 info@pentan.co.uk

Project
 Aberthin Road, Cowbridge
 Client
 Hafod Housing

Drawing Title
Proposed Apartment Elevations

NOTES: Do not scale. All dimensions are in millimetres unless stated otherwise

Date
 Nov '18
 Scale
 1:100 @ A1
 Drawing No.
 3703/PA/013
 Rev.
 A