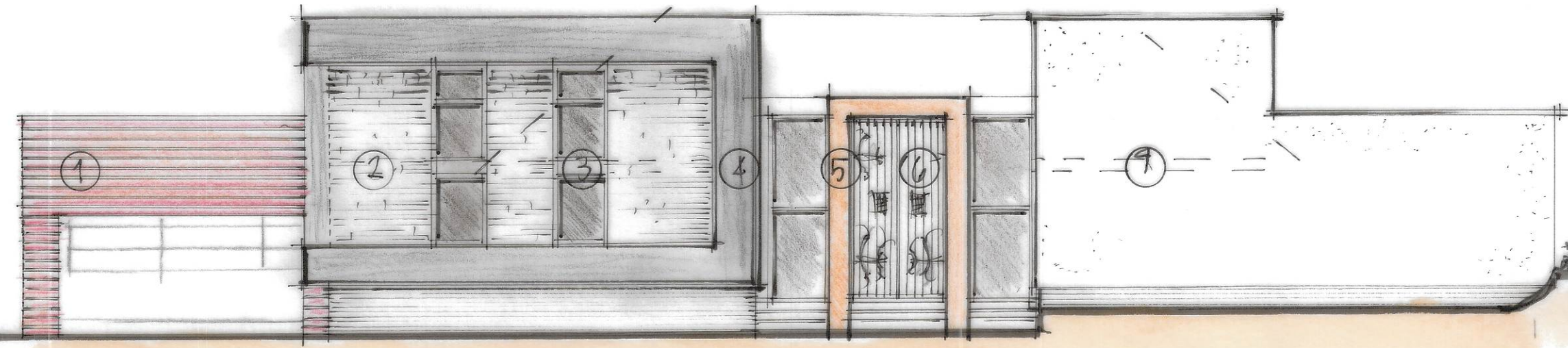
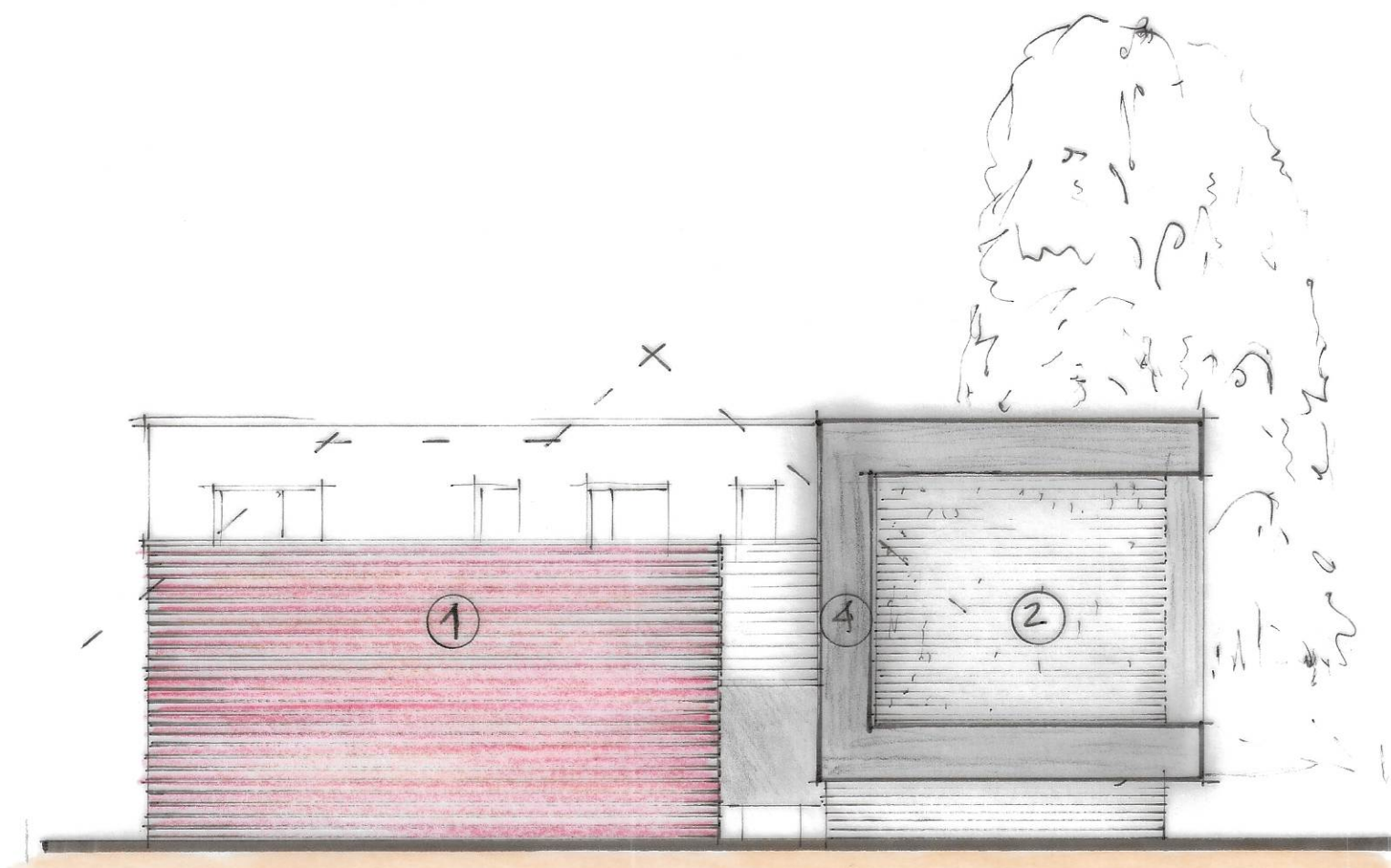


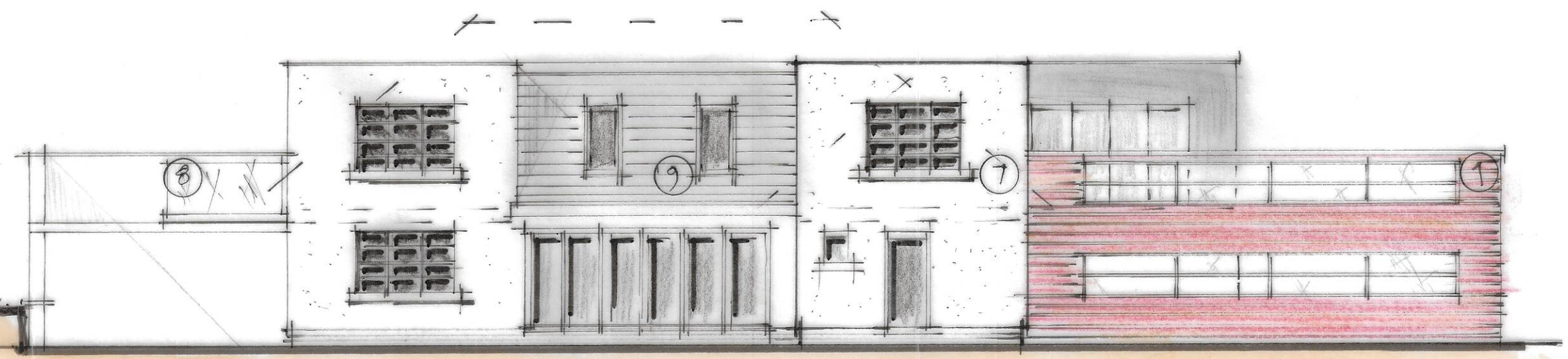
EXISTING RIDGE LINE



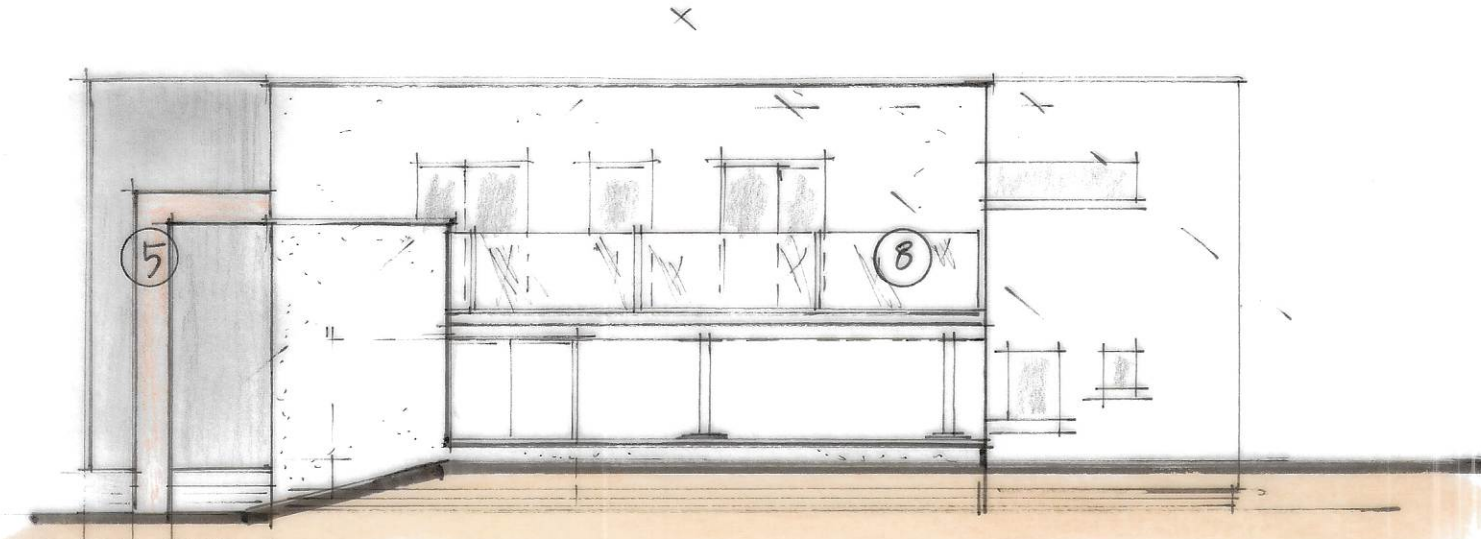
FACING NORTH EAST



FACING SOUTH EAST



FACING SOUTH WEST



FACING NORTH WEST

- ① HARDWOOD CLADDING TO FRAMED GARAGE
- ② NATURAL SLATE CLADDING
- ③ POWDER COATED ALUMINIUM WINDOWS

- ④ POWDER COATED ALUMINIUM CLADDING
- ⑤ CORTEN STEEL FRAME PORCH
- ⑥ HARDWOOD ENTRANCE DOORS

- ⑦ 'K' RENDER OR SIMILAR RENDER SYSTEM
- ⑧ GLASS BALCONY SUPPORTED ON BRICK SQUEL
- ⑨ BLACK SLATE PITCHED ROOF + VELUX WINDOWS