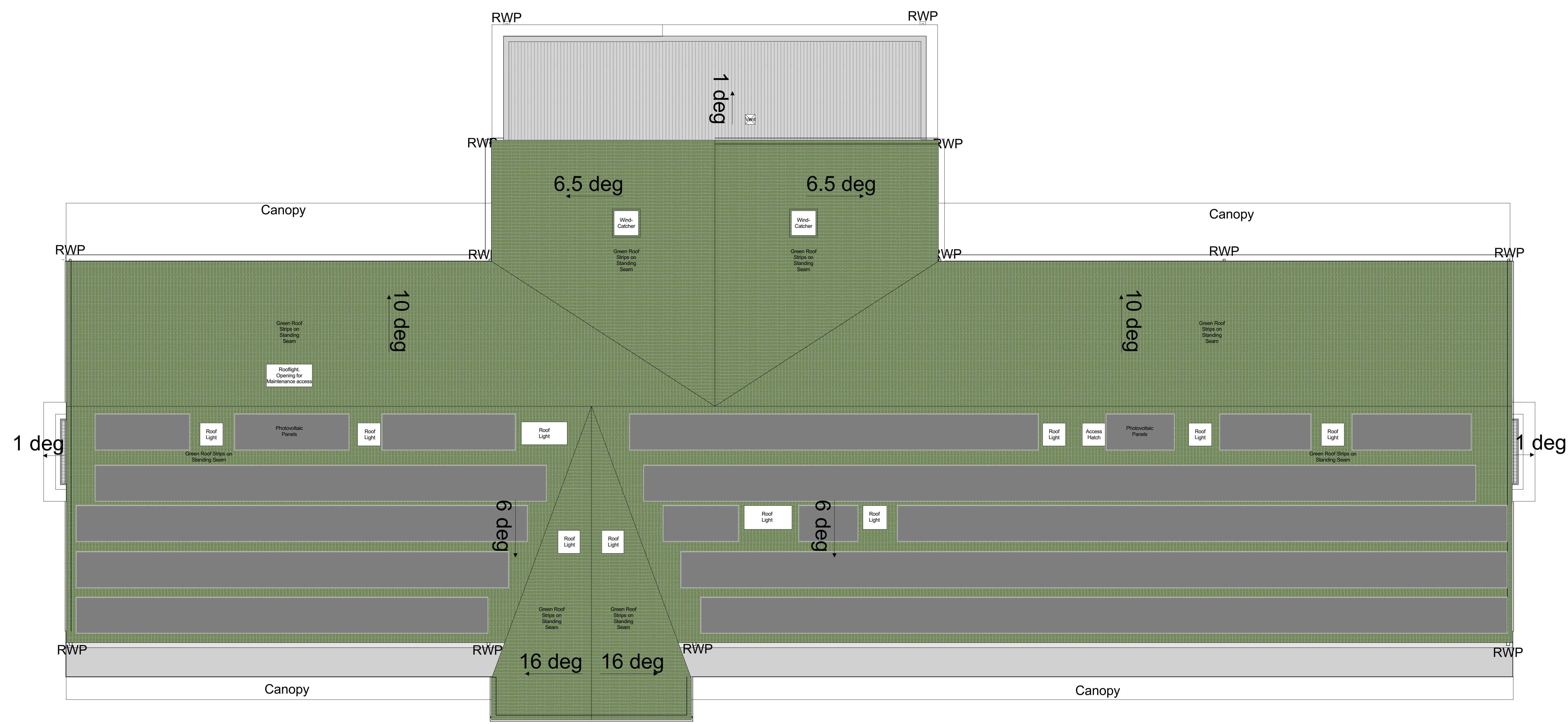


MPO = Max Pupil Occupancy,  
 MAO = Max Adult Occupancy (staff, visitors etc)

Occupancies stated are estimated maximum occupancies for calculating fire escape / ventilation. School / VoG to confirm maximum occupancies.

These include pupils, staff and visitors to each room, and do NOT refer to the number of desk spaces.

The building's total occupancy will be less than the sum of these, due to occupants moving around the building.



Rev	Description	By	Date	Sub
P13	Issue for Planning	AMS	06.10.2022	AMS
P12	Stage 4 Issue	AMS	11.08.2022	AMS
P11	Updated Stage 3 Submission	AMS	28.06.2022	AMS
P10	Issue for Planning	AMS	24.02.2022	AMS
P09	Stage 3 Submission	AMS	11.03.2022	AMS
002	Issue for Planning	AMS	01.02.2022	AMS
P07	Entrance area amended	AMS	04.02.2022	AMS
001	Creating content changed from V02 to V102	AMS	07.01.2022	AMS
P06	ISSUED WITH STAGE 2 REPORT	AMS	18.10.2021	AMS
P05	Issued for Planning	AMS	18.12.2020	AMS
P04	UPDATED ISSUE FOR OUTLINE FAC	AMS	18.12.2020	AMS
P03	ISSUE FOR OUTLINE FAC	AMS	18.12.2020	AMS
P02	FOR INFORMATION & COMMENT	SM	18.12.2020	SM
P01	FOR INFORMATION & COMMENT	SM	18.12.2020	SM
000	Description	SM		AMS

Revisions  
 Project: 15-1077-01  
 Submittal: S4

**15-1077-01**  
**Ysgol Y Deri**  
**Expansion**



**Roof Plan - Presentation**

Drawing No.	Revision
<b>YUDE-HLM-01-R1-DR-A-00101</b>	<b>P13</b>
Scale @ A0	Drawn
1:100	AMS
Date	Checked
06.10.2022	