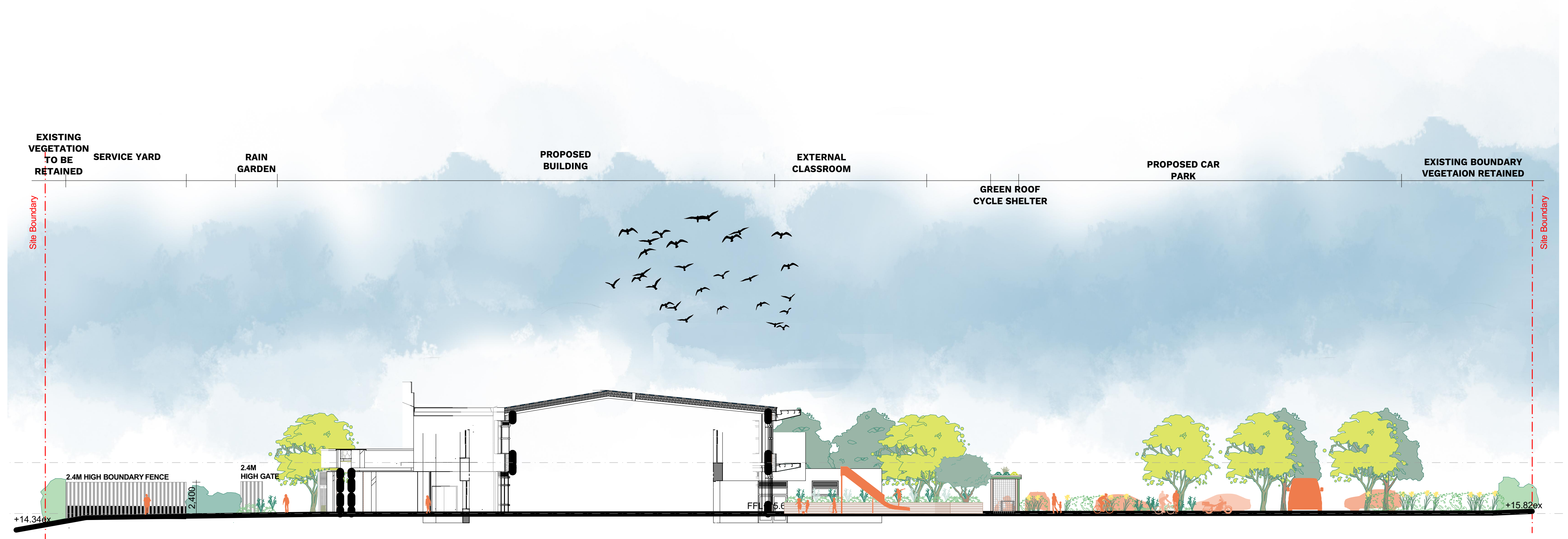




Site Section 1

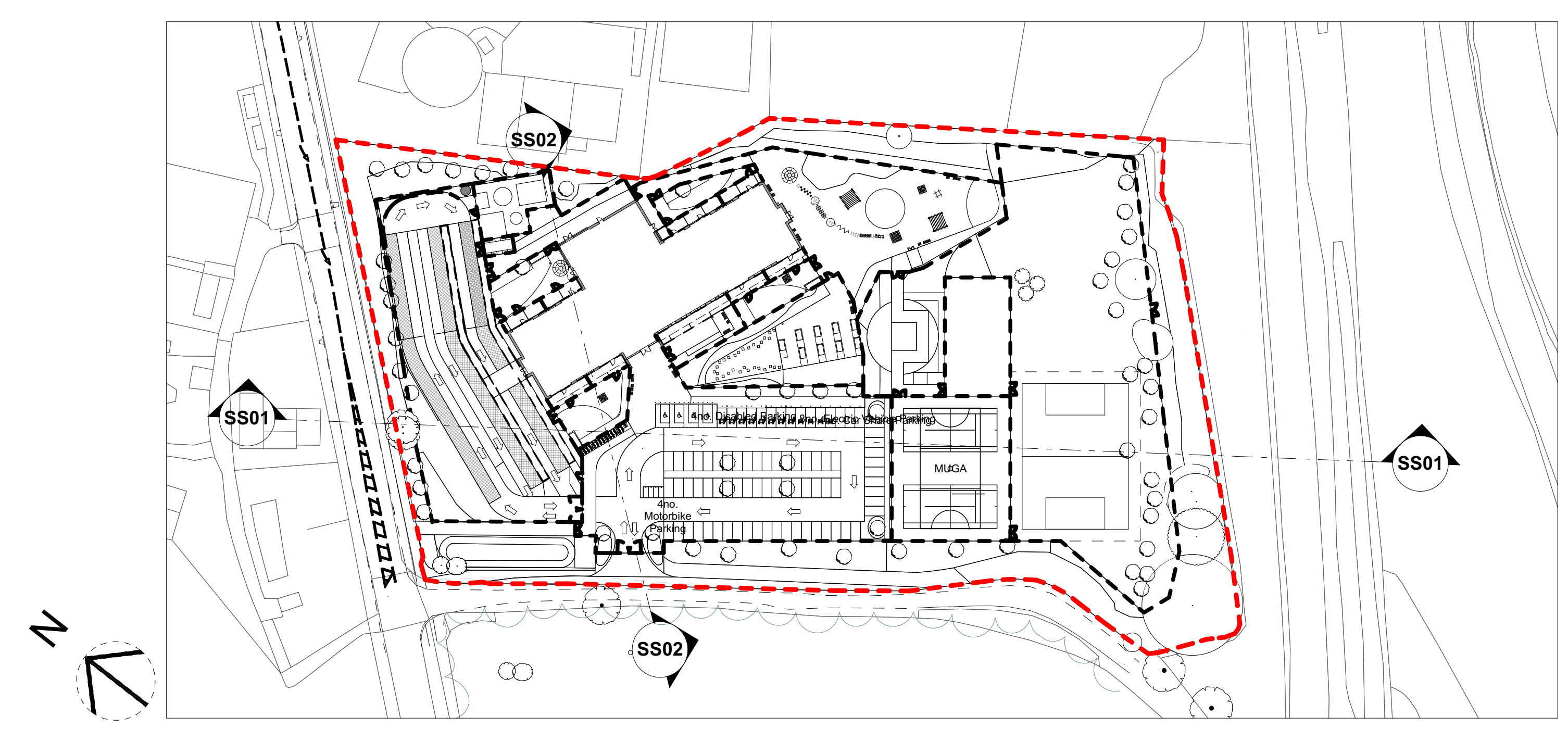
1:200

Notes
Check all dimensions on site. Do not scale from this drawing.
Report any discrepancies and omissions to HLM Architects.
This Drawing is Copyright ©



Site Section 2

1:200



00

SITE WIDE SECTION KEYPLAN

1:1000

Revisions	Substability
PO1 ISSUED FOR PLANNING	06.10.22 SL IB
PO2 ISSUED FOR PLANNING	06.10.22 SL IB
PO3 ISSUED FOR PLANNING	06.10.22 SL IB
PO4 ISSUED FOR PLANNING	06.10.22 SL IB
PO5 ISSUED FOR PLANNING	06.10.22 SL IB
PO6 ISSUED FOR PLANNING	06.10.22 SL IB
PO7 ISSUED FOR PLANNING	06.10.22 SL IB
PO8 ISSUED FOR PLANNING	06.10.22 SL IB
PO9 ISSUED FOR PLANNING	06.10.22 SL IB
PO10 ISSUED FOR PLANNING	06.10.22 SL IB
PO11 ISSUED FOR PLANNING	06.10.22 SL IB
PO12 ISSUED FOR PLANNING	06.10.22 SL IB
PO13 ISSUED FOR PLANNING	06.10.22 SL IB
PO14 ISSUED FOR PLANNING	06.10.22 SL IB
PO15 ISSUED FOR PLANNING	06.10.22 SL IB
PO16 ISSUED FOR PLANNING	06.10.22 SL IB
PO17 ISSUED FOR PLANNING	06.10.22 SL IB
PO18 ISSUED FOR PLANNING	06.10.22 SL IB
PO19 ISSUED FOR PLANNING	06.10.22 SL IB
PO20 ISSUED FOR PLANNING	06.10.22 SL IB
PO21 ISSUED FOR PLANNING	06.10.22 SL IB
PO22 ISSUED FOR PLANNING	06.10.22 SL IB
PO23 ISSUED FOR PLANNING	06.10.22 SL IB
PO24 ISSUED FOR PLANNING	06.10.22 SL IB
PO25 ISSUED FOR PLANNING	06.10.22 SL IB
PO26 ISSUED FOR PLANNING	06.10.22 SL IB
PO27 ISSUED FOR PLANNING	06.10.22 SL IB
PO28 ISSUED FOR PLANNING	06.10.22 SL IB
PO29 ISSUED FOR PLANNING	06.10.22 SL IB
PO30 ISSUED FOR PLANNING	06.10.22 SL IB
PO31 ISSUED FOR PLANNING	06.10.22 SL IB
PO32 ISSUED FOR PLANNING	06.10.22 SL IB
PO33 ISSUED FOR PLANNING	06.10.22 SL IB
PO34 ISSUED FOR PLANNING	06.10.22 SL IB
PO35 ISSUED FOR PLANNING	06.10.22 SL IB
PO36 ISSUED FOR PLANNING	06.10.22 SL IB
PO37 ISSUED FOR PLANNING	06.10.22 SL IB
PO38 ISSUED FOR PLANNING	06.10.22 SL IB
PO39 ISSUED FOR PLANNING	06.10.22 SL IB
PO40 ISSUED FOR PLANNING	06.10.22 SL IB
PO41 ISSUED FOR PLANNING	06.10.22 SL IB
PO42 ISSUED FOR PLANNING	06.10.22 SL IB
PO43 ISSUED FOR PLANNING	06.10.22 SL IB
PO44 ISSUED FOR PLANNING	06.10.22 SL IB
PO45 ISSUED FOR PLANNING	06.10.22 SL IB
PO46 ISSUED FOR PLANNING	06.10.22 SL IB
PO47 ISSUED FOR PLANNING	06.10.22 SL IB
PO48 ISSUED FOR PLANNING	06.10.22 SL IB
PO49 ISSUED FOR PLANNING	06.10.22 SL IB
PO50 ISSUED FOR PLANNING	06.10.22 SL IB

15-1077-01
Ysgol Y Deri -
Primary School

Client
Vale of Glamorgan Council
Title
SITE WIDE SECTIONS

Drawing No.	Revision
YYDE-HLM-00-00-DR-L-00006	P05
Scale @ A0	Drawn
1:200(1:1200000)	SL
Date	Checked
06.10.22	IB

HLM Architects
© HLM Architects
Suite 104
The Creative Quarter
Morgan Arcade
The Hayes
Cardiff CF10 1AF
www.hlmarchitects.com
T. +44 (0) 29 2039 6070
F. +44 (0) 29 2039 6080
cardiff@hlmarchitects.com