

## 4.6 Landscape-Key Spaces

### 4.6.1 Car Park Entrance Plaza & Approach



Location Plan - Car Park Main Entrance Plaza

- ① Main entrance  
Pedestrian entrance route
- ② Plaza seating & planting
- ③ Social Lawn



#### 4.6.2 Social Lawn



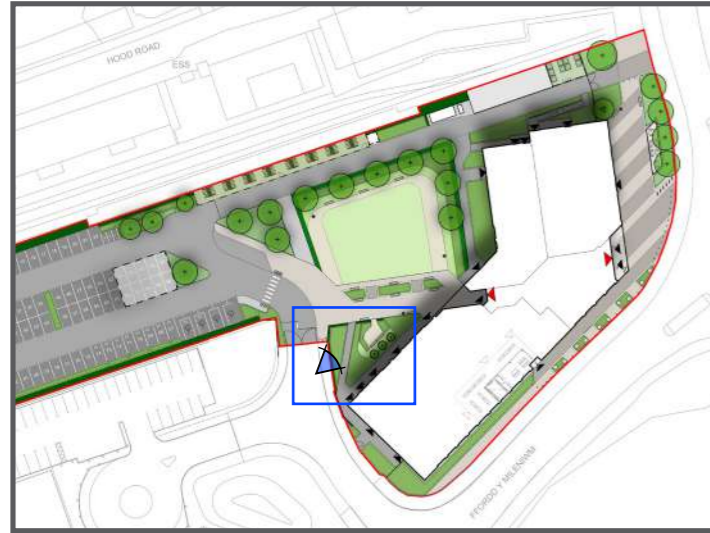
Location Plan - Social Lawn

- ① Social Lawn
- ② External Dining
- ③ Wildflower turf
- ④ Double Stacked Cycle Parking



#### 4.6.3 Edible Garden

### Edible Garden

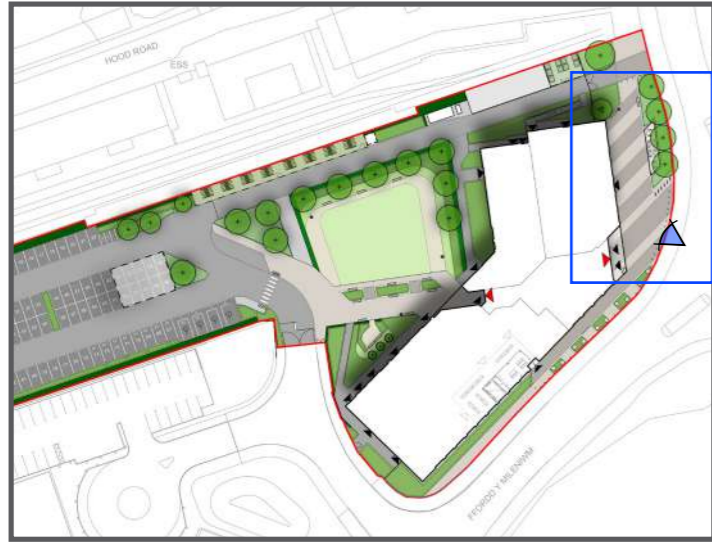


Location Plan - Edible Garden

- ① Raised Planters
- ② Social Lawn



#### 4.6.4 Front Entrance and External Dining

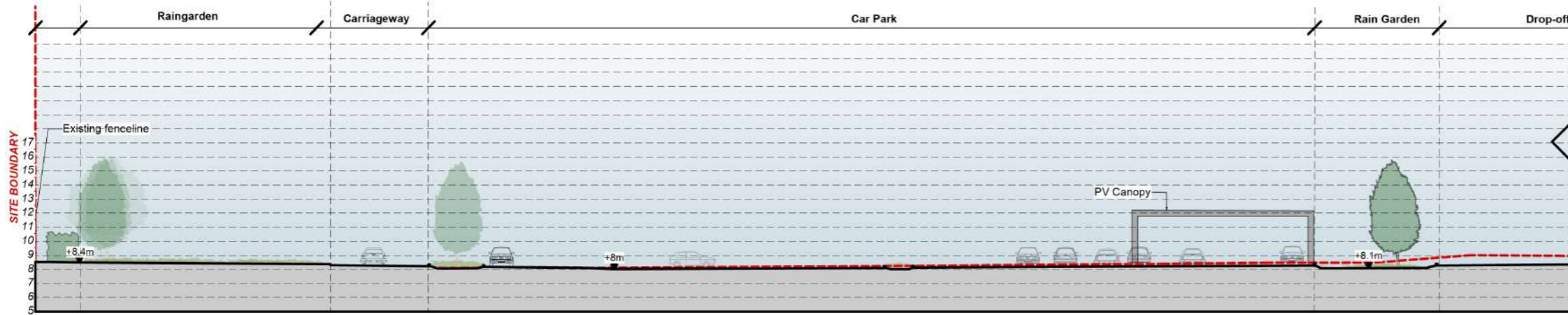


Location Plan - Front Entrance & Dining

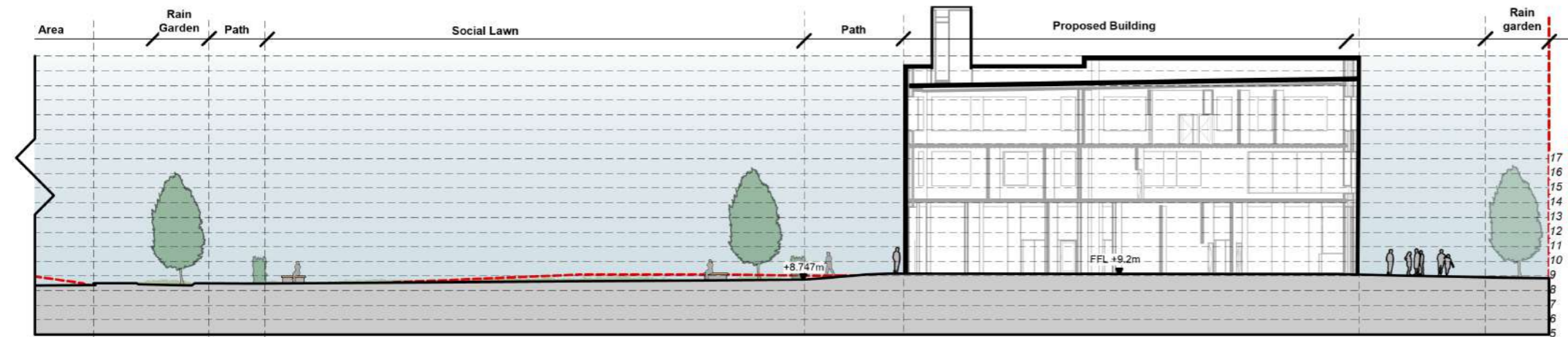
- ① External Dining
- ② Rain Gardens & Feature Trees
- ③ Entrance Plaza



## 4.7 Site Sections



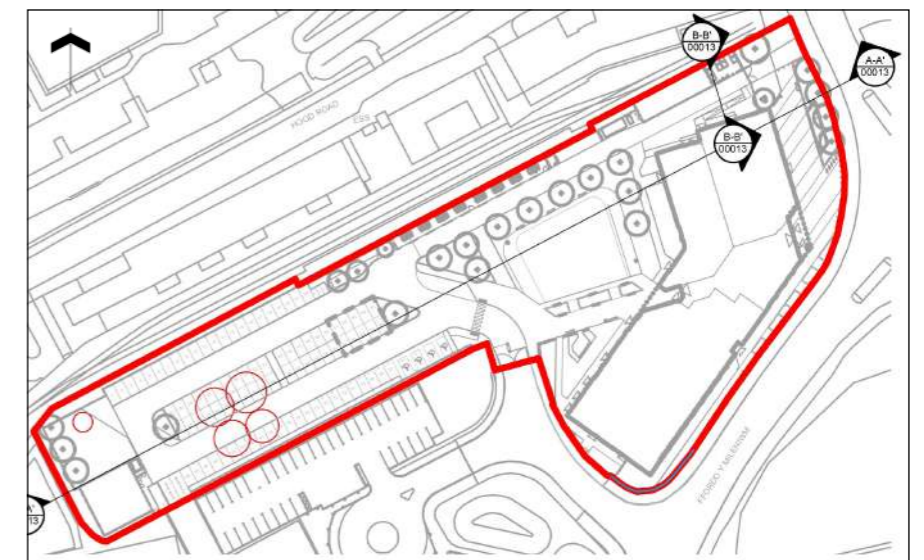
**SECTION A-A**  
South to North



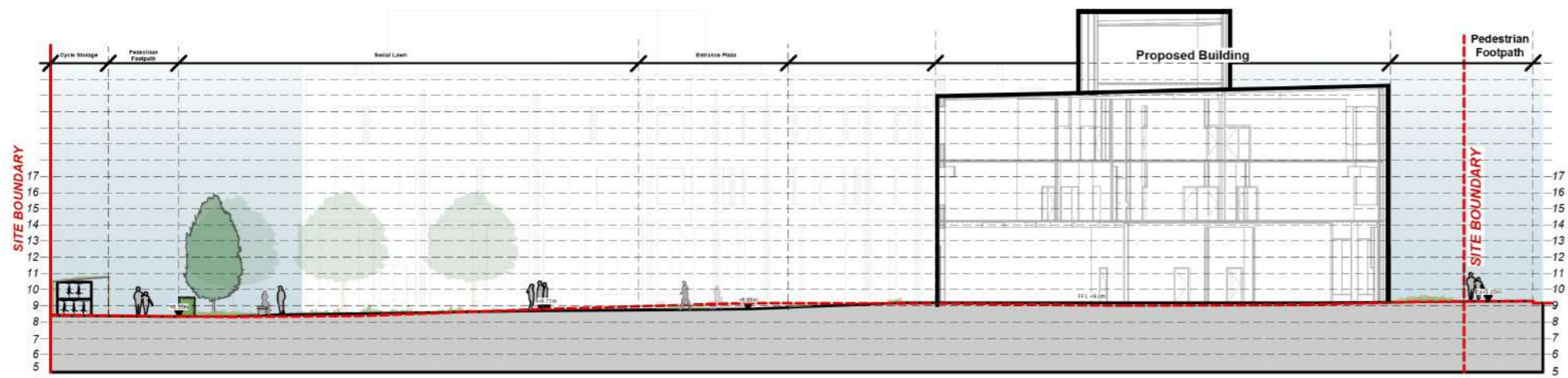
**SECTION A-A (continued)**  
South to North



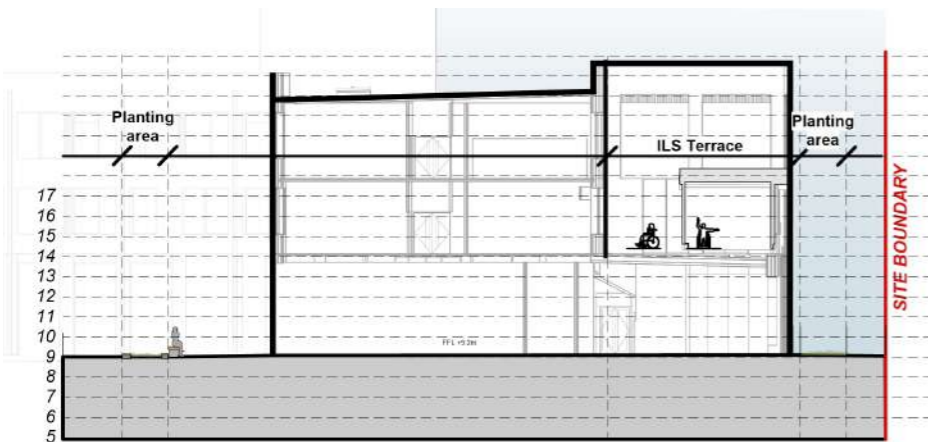
**SECTION B-B**  
West to East



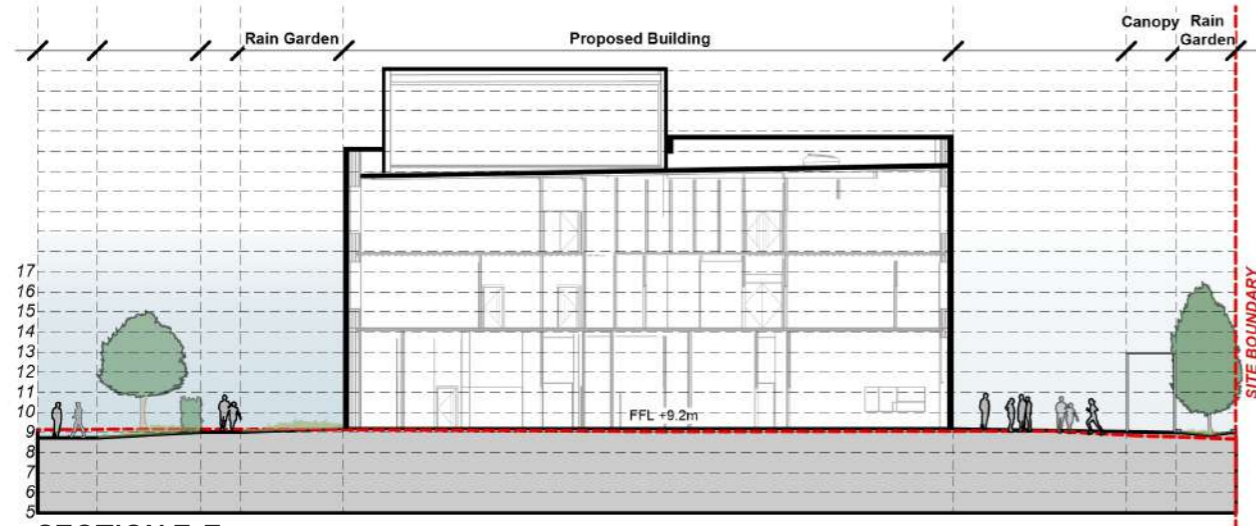
**LOCATION PLAN**  
NTS



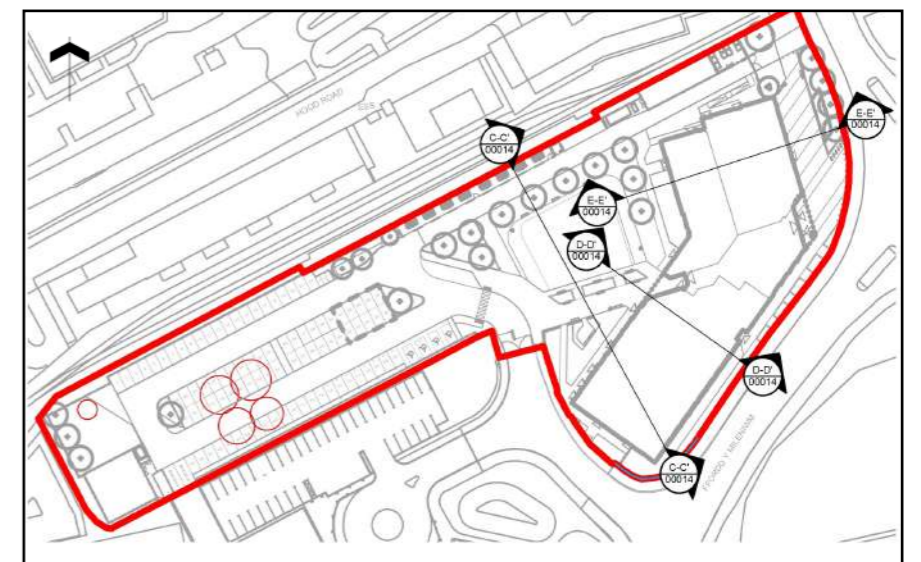
**SECTION C-C**  
North to South



**SECTION D-D**  
West to East



**SECTION E-E**  
West to East

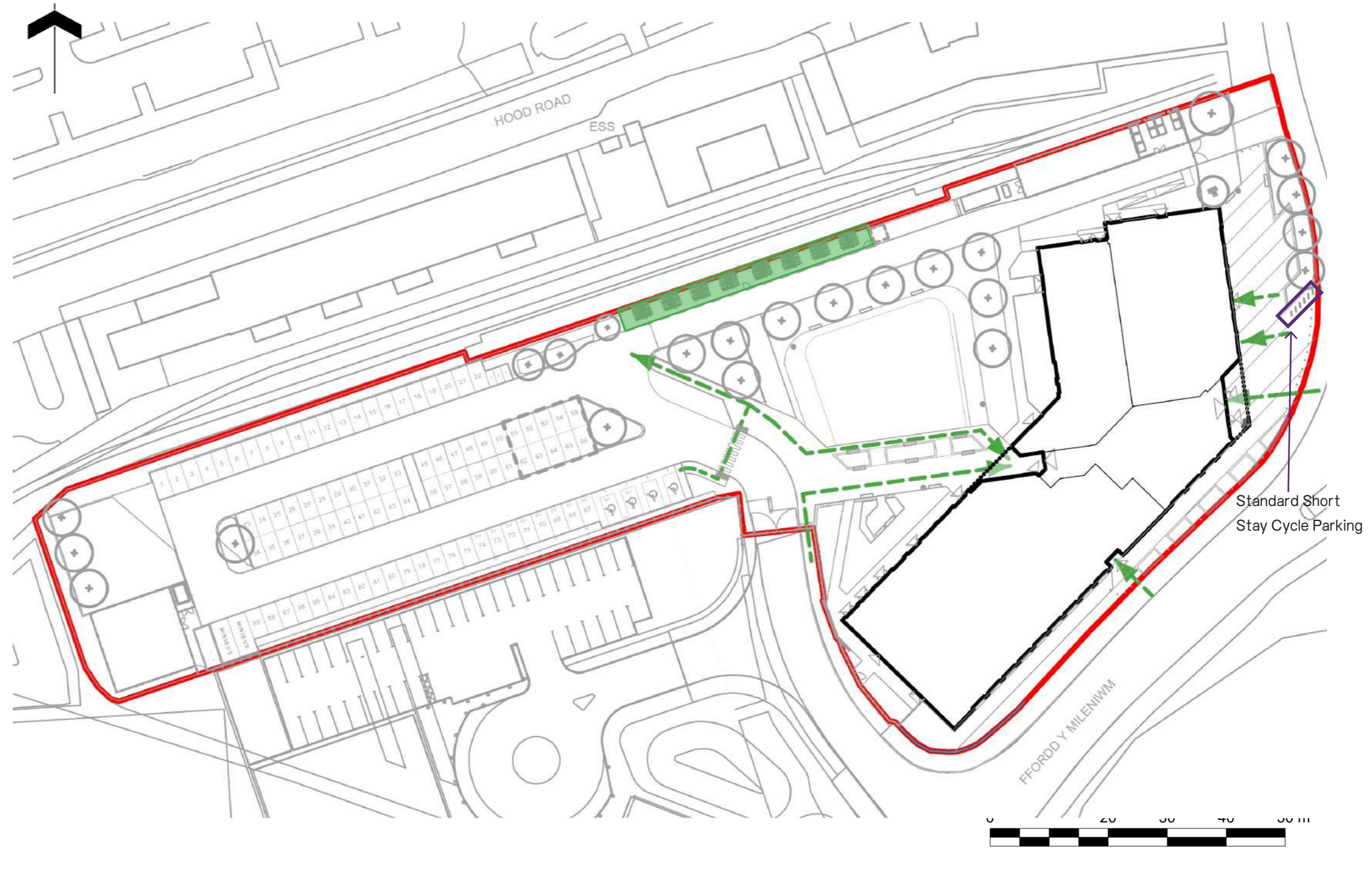


**LOCATION PLAN**  
NTS

## 4.8 Pedestrian & Cycle Access

Main pedestrian access follows pathways from the car park to the rear entrance, and access to the front entrance is via the entrance plaza.

Cycle parking is located along the northern boundary. 160 long stay cycle spaces have been proposed using two tier bike racks within an enclosure. 10 short stay cycle parking is located to the front entrance.



## 4.9 Vehicular Access

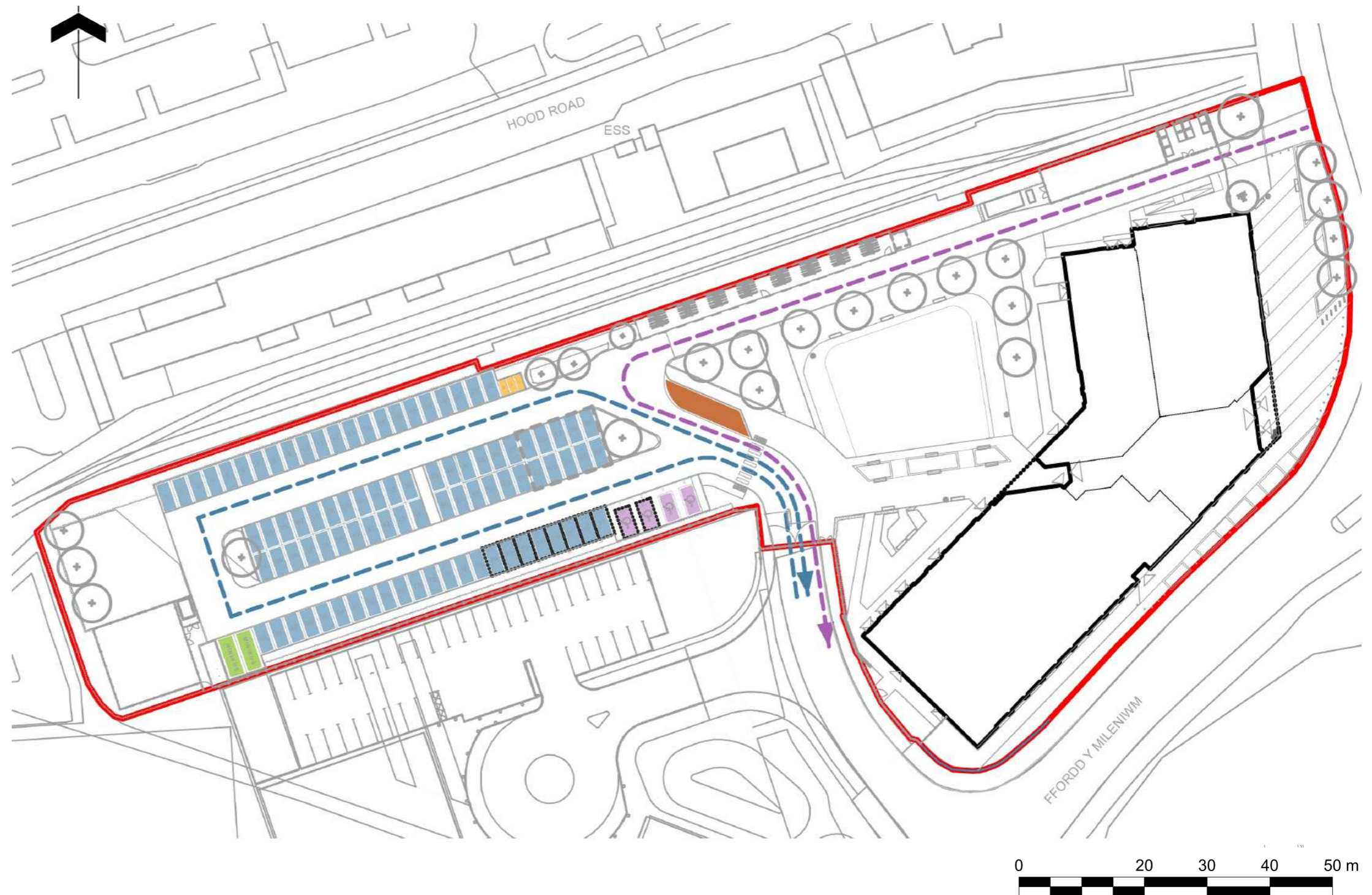
The proposals include 93 parking spaces, including 4 disabled bays and 10 Electric Vehicle Charging Points. A drop off/ pick up bay has also been included for minibus access, as well as 2 parking bays dedicated to minibuses.

The main vehicular access into the site will be via Ffordd Y Mileniwm. Access into the car park is controlled via an automatic rising arm barrier that will have an intercom connected to reception.

An additional through-route has been provided to the north of the building. This route will accommodate refuse, delivery, fire and maintenance vehicles. This route will predominantly be used as a one-way route, accessed via Hood Road. The route's location is primarily for health and safety reasons to safeguard the students by segregating the delivery and service from areas used by the Students. Service access to the sprinkler tank compound is via the car park.

### Key

- Site Boundary
- - - Vehicular Access
- - - Deliveries, ASHP, Refuse, Fire Tender Access
- Car Parking (89no. Spaces)
- Disabled Parking (4no. Spaces)
- Pickup / Drop-Off
- Motorcycle Parking
- Mini-Bus Parking
- Electric Vehicle Charging Spaces





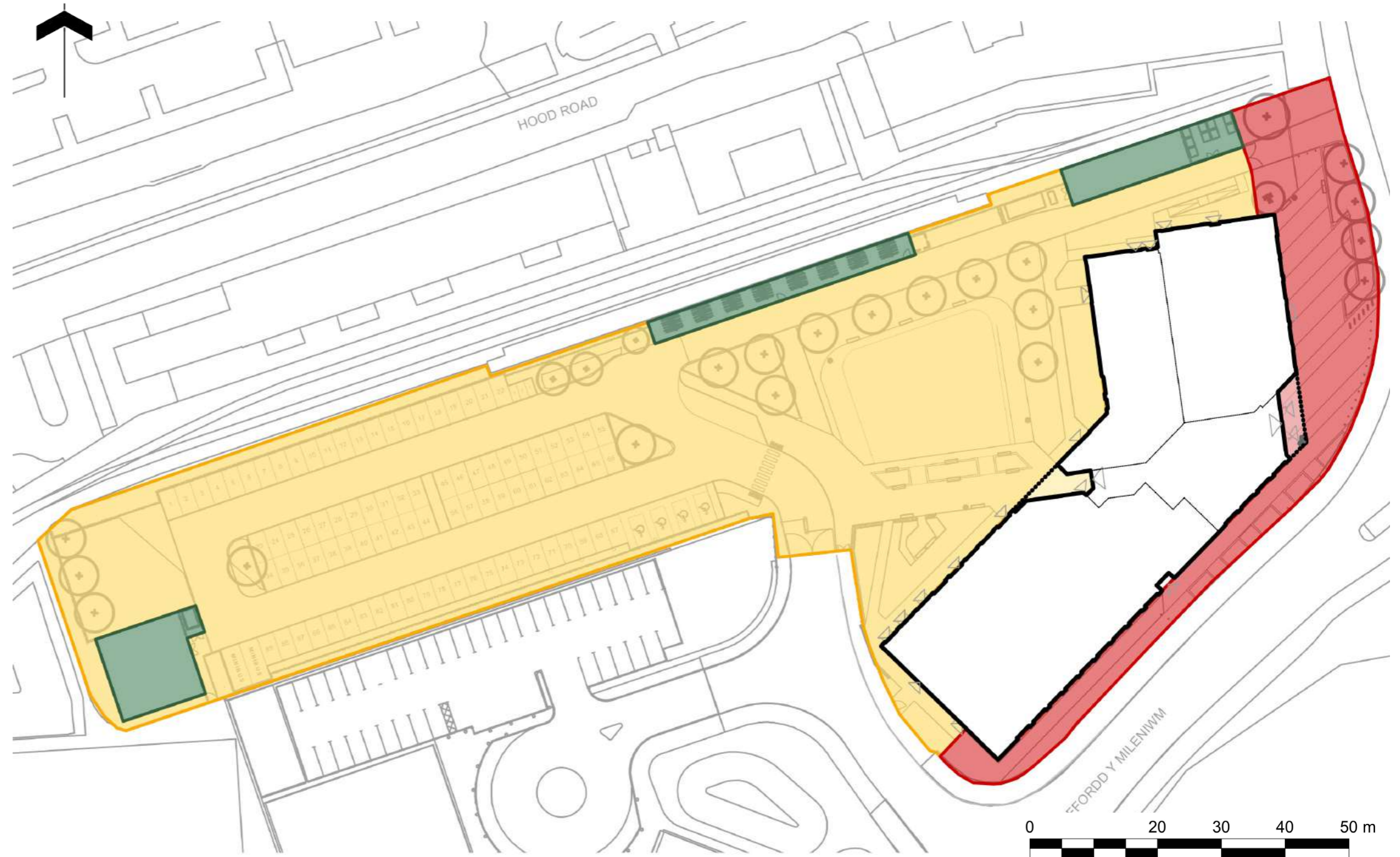
## 4.10 Site Security

The front along Ffordd y Mileniwm and Hood Road will remain publicly accessible with access to the main entrance and café/restaurant. The management of students and users into the building will be controlled via the entrances to the front and rear of the building.





The gate to the car park will remain open during working hours and be closed during out of hours. An automated rising arm barrier, which will be connected to reception via the intercom, has been included in the proposals to control vehicular access into the car park during the working hours.

Fencing or enclosed structures have been proposed to features that require secure areas such as external plant compounds, cycle shelters and the bin store.

The cycle shelters will feature secure sliding gates. Access to these shelters will be via a manual or keypad lock system.



### Key

-  Site Boundary
-  Public Access
-  Controlled Access
-  Secure Access

## 4.11 Fencing Strategy

Along the northern boundary along the Goodsheds, a 2.4m metal balltop fence has been proposed to compliment the aesthetic of the railway setting. As well as this, a 2.4m weldmesh fencing surrounds the rest of the site boundary to tie in with the weldmesh fence to Ysgol Gymraeg Sant Baruc.

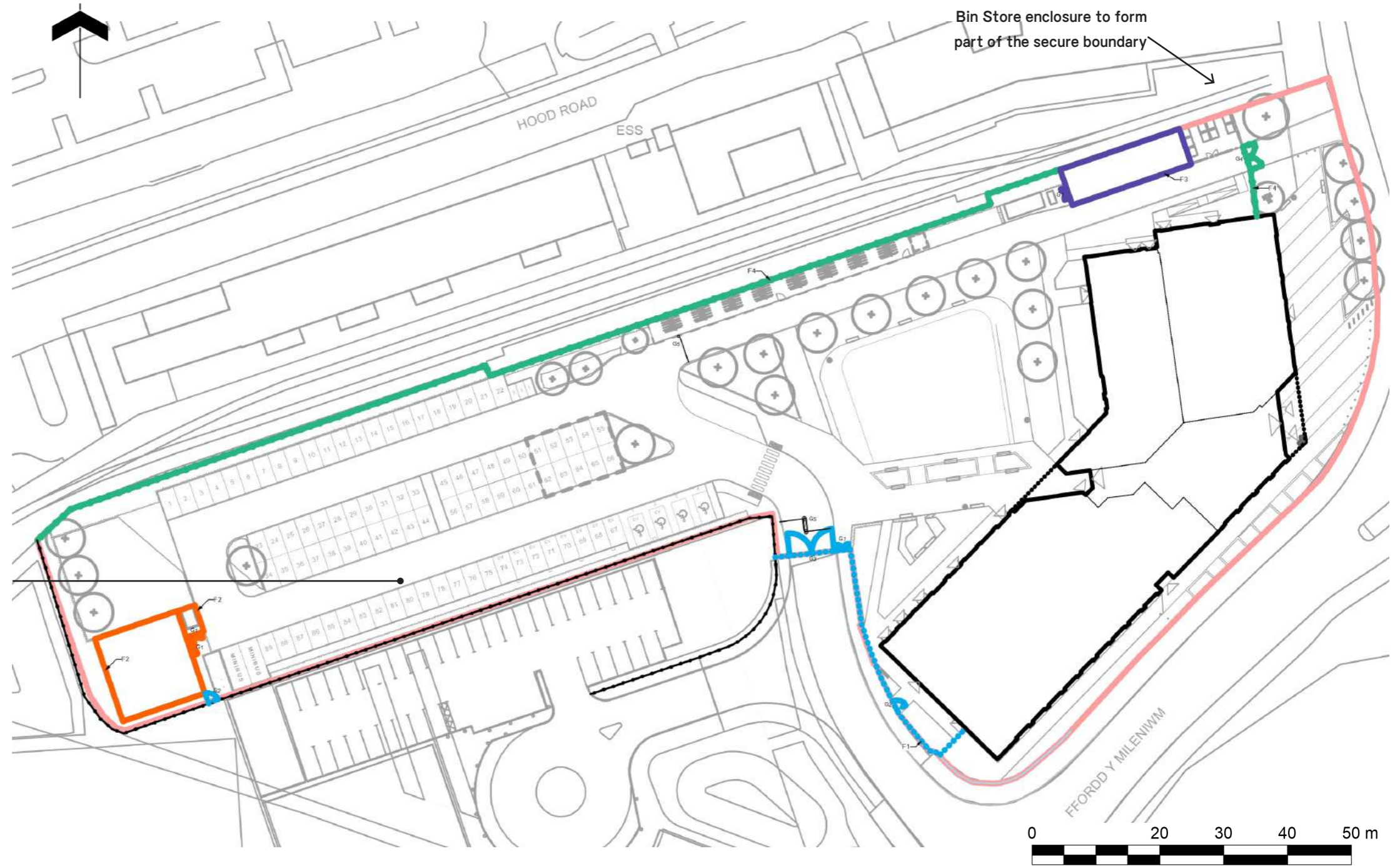
The exception to this is the site frontage where an open and welcoming approach is desired.

Acoustic louvred fencing is proposed to the air source heat pump enclosure to minimise the impact of noise adjacent to the building.

3m closeboard fencing has been proposed to the sprinkler tank to screen as much plant as possible from the car park.

An additional gate has been added next to the sprinkler tank to allow for pedestrian access from a potential new walking route within the school's boundary.

The covered cycle shelters will form a secure compound that will be accessed via a key pad or similar. The bin store is an enclosed structure.



### Key

- Site Boundary
- - - 2.4m Metal Balltop Fencing
- - - 2.4m Weldmesh Fencing
- 3m Close board Timber Fence
- 3m Acoustic Louvred Fence
- Existing fence to be retained

## 4.12 Ecology & Arboriculture

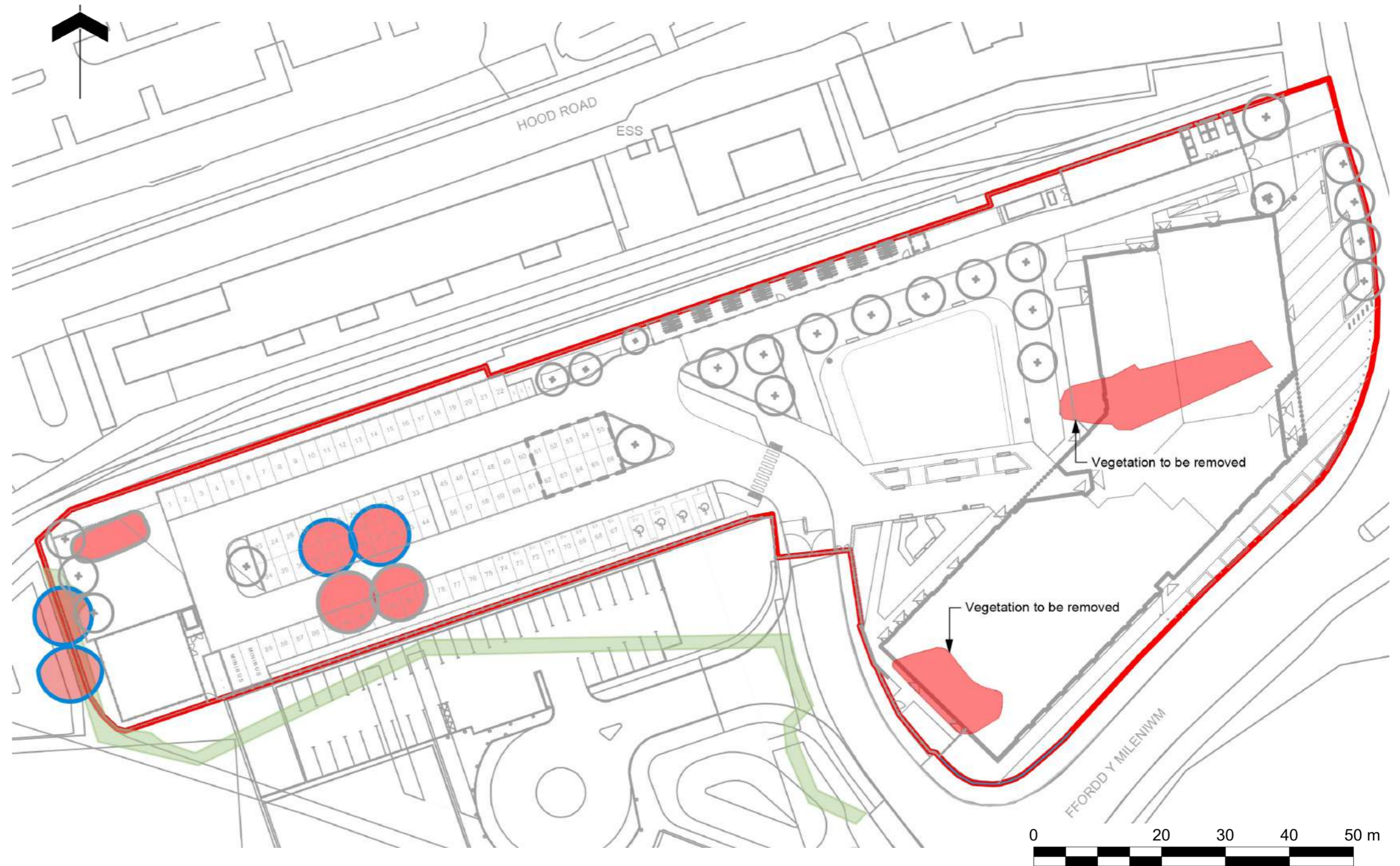
As per the Preliminary Ecology Appraisal, the site is predominantly made up of semi improved grassland and bare ground with limited tree and scrub cover. Grassland is small in extent. No rare vascular plants were found, and all species recorded were common and widespread. There were no invasive or notifiable species. No standing water, isolated by existing roads and limited habitat areas make it a unsuitable area for reptiles, bats, badgers, otters and water voles.

The appraisal concluded the site to be of limited value to wildlife.

Hedge planting to the site's boundaries has been proposed where possible. As well as this, rain gardens and varied planting types have been proposed to ensure biodiversity is enhanced wherever possible.

As per the Tree Survey Assessment, the site contains a limited amount of vegetation which is mainly scrub and low value trees.

The trees include 4 Holm Oak trees ranging from category B to C. Due to the limited space on the site, these 4 trees are proposed to be removed . Their removal will be mitigated by new tree planting within the proposed landscape.



### Key

- Site Boundary
- Category B Tree
- Category C Tree
- Scrub Vegetation
- Trees / Vegetation to be removed

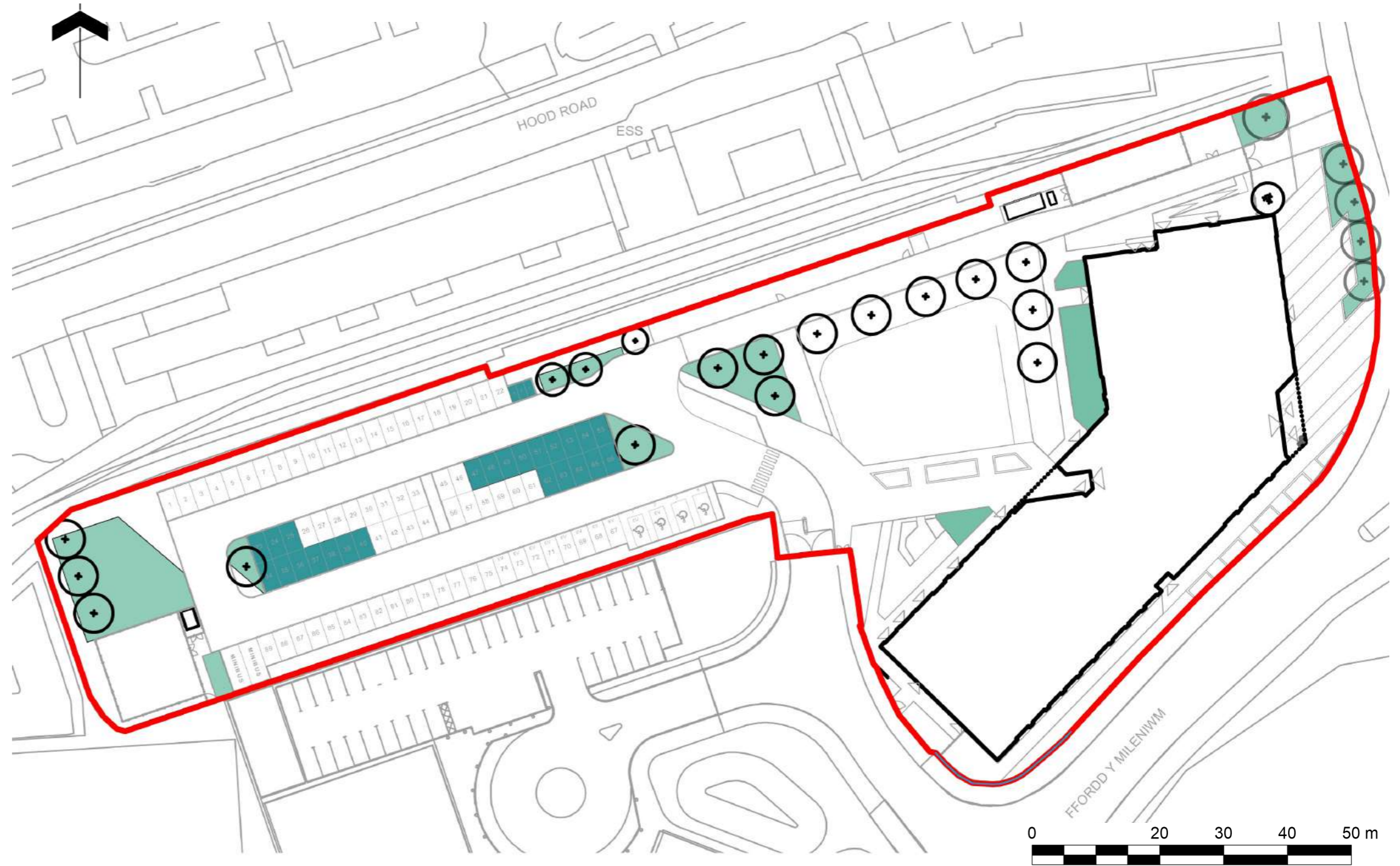
### 4.13 Sustainable Drainage

Where existing services run through the site, it is not been possible to locate sustainable drainage features above these services and their easements due to SAB requirements. As such, the sustainable drainage strategy on site has been extremely constrained.

The areas of planting close to the building which do not sit above services will function as rain gardens to capture and treat stormwater from the roof. These features then connect into the wider SUDS and proposed drainage network.

Areas of parking which do not fall within the existing service easements will feature permeable block paving.

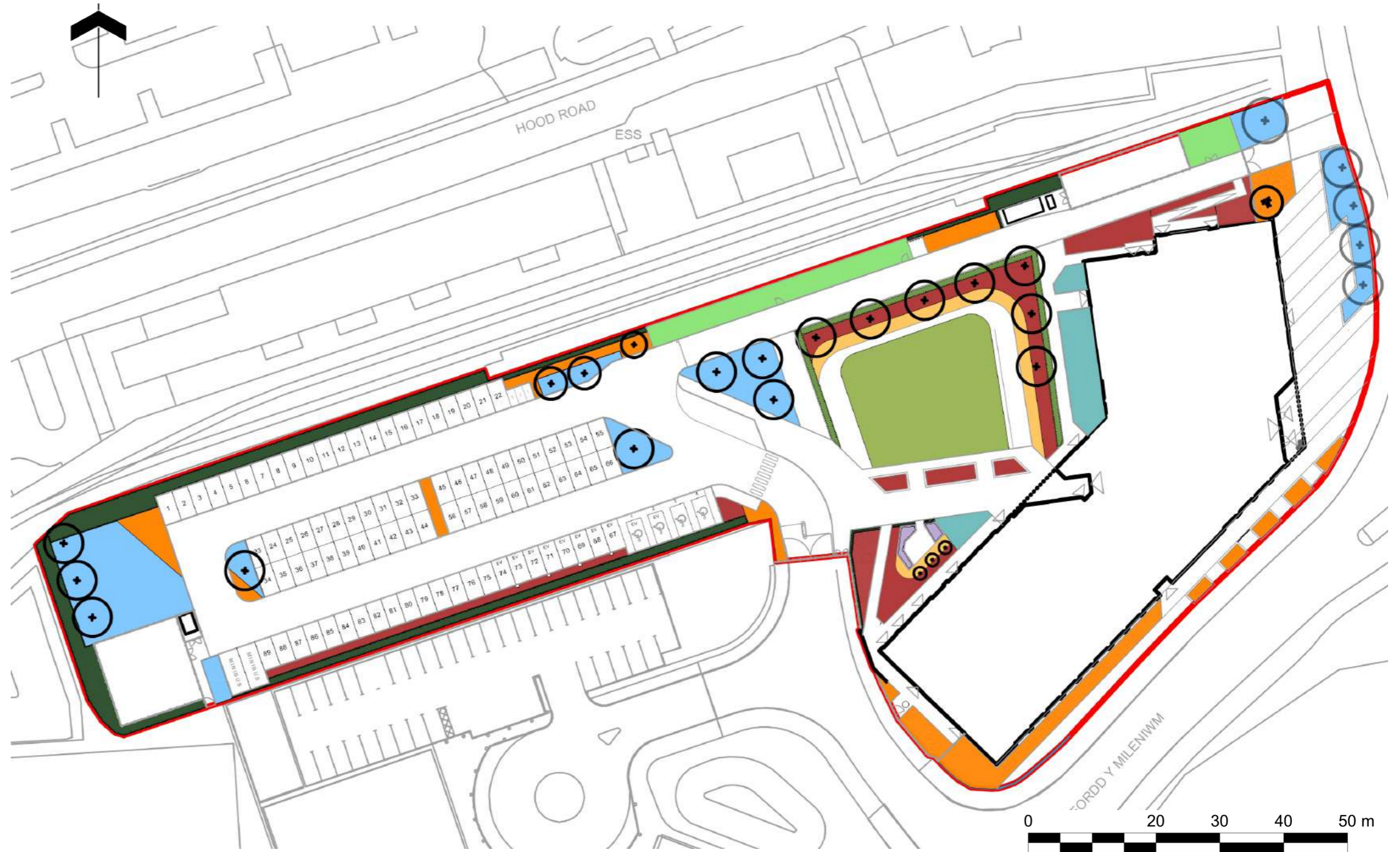
Due to the limited space on site as a result of services, the building footprint, external plant and access and the demand for outdoor social space for students, it has not been possible to accommodate storage volume in attenuation basins.



- Key
- Site Boundary
  - Permeable Paving
  - Rain Gardens/ swales

## 4.14 Planting Strategy

-  Site Boundary
-  Proposed Tree
-  Proposed Multi-stem Tree
-  **Grass Turf**  
Areas of grass to be enjoyed recreationally by students or acts as an element of the eco-tone planting to the boundary planting
-  **Wildflower Turf**  
Wildflower seed mix to areas at the periphery of the site, used as eco-tone planting to create areas of structure and habitat.
-  **Amenity Planting - Full/Partial Sun**  
Herbaceous perennial and shrub planting located in areas where it receives full or partial sun.
-  **Amenity Planting - Shade Tolerant**  
Herbaceous perennial and shrub planting located in areas where it is mostly shaded throughout the day.
-  **Rain Garden - Partial Sun**  
Planting that is tolerant to waterlogging and rain garden conditions, that also thrive in sunnier or partially sunny spots.
-  **Rain Garden - Shade Tolerant**  
Planting that is tolerant to waterlogging and rain garden conditions, that is also tolerant to shadier conditions.
-  **Green Roof**  
Green roofs to the cycle shelters
-  **Edible Planting**  
Native species planted as smaller whips and shrubs. This acts as parts of the eco-tone planting around the periphery of the site to create a biodiverse habitat area.
-  **Native Hedgerow**  
Native hedgerow mix along areas of the site boundary, creating a wildlife corridor along the edges of the site.
-  **Formal Instant Hedge Planting**  
Formal hedge planting creates more structured planting within the social spaces



## 4.15 Tree Species Selection

(N) NATIVE SPECIES (E) EVERGREEN

### Feature Trees



(N)

#### Quercus petraea

Sessile/Welsh Oak (Welsh National Tree)

Chosen as the feature trees to the main entrances due to its significance to Wales as it's the National tree.

### Shade Tolerant Trees



#### Tilia cordata 'Greenspire'

Small-leaved Lime

Chosen for its tidy upright form and broad canopy.

### General Trees



(N)

#### Acer campestre

Field Maple

Native to the UK. One of the species existing in the tree groups removed on the site. Forms part of the boundary tree planting.



(N)

#### Betula pendula

Silver Birch

Native to the UK. One of the species existing on site to be removed. Forms part of the boundary tree planting.



(N)

#### Sorbus aria

Whitebeam

Native to the UK. Forms part of the boundary tree planting.



#### Amelanchier lamarckii arborea

Juneberry

Smaller bushier tree with a grey colour bark. Multi-stem provides a variety in structure and form. Also provides blossom in spring and vibrant autumn colour.



#### Prunus avium 'Stella' arborea

Cherry Tree

Chosen to be part of the edible garden.

### Water/Drought Tolerant Trees - Rain Gardens



#### Acer rubrum

Red Maple

Chosen due to its tolerance to water logging and rain garden conditions. Also provides vibrant autumn colour.



#### Acer x freemanii 'Armstrong'

Freeman/Canadian Maple

Chosen due to its tolerance to water logging and rain garden conditions. Also provides vibrant autumn colour.



#### Alnus cordata

Italian Alder

Chosen due to its moderate tolerance to both water logging and drought.



(N)

#### Betula pubescens

Downy Birch

Chosen due to its moderate tolerance to water logging. Also provides interest with the silver coloured bark.



#### Platanus orientalis 'Minaret'

Oriental Plane

An ornamental tree chosen due to its tolerance to water logging and rain garden conditions. Provides a vibrant orange/yellow colour during Autumn months.



(N)

(E)

#### Pinus sylvestris

Scots Pine

Chosen due to its moderate tolerance to water logging and rain garden conditions, as well as tolerant to drought. Also provides all year round colour.

## 4.16 Hard Materials Palette

### Entrance Plaza



**CONCRETE BLOCK PAVING**  
Location: To entrance plazas and social spaces  
Colour: Lighter Grey  
Bond: Stretcher



**CONCRETE BLOCK PAVING**  
Location: To entrance plazas and social spaces  
Colour: Darker Grey  
Bond: Stretcher

### Social Space



**RESIN BOUND GRAVEL**  
Location: To entrance plazas and social spaces

### Car Park



**PERMEABLE / NON-PERMEABLE BLOCK PAVING**  
Location: To car parking spaces  
Colour: Charcoal with white marker blocks

## 4.17 Street Furniture

### Entrance Plaza



S2

**DOUBLE STACKED CYCLE RACK**



S2

**CYCLE SHELTER**



S1

**SEATING BENCH**



S3

**PICNIC BENCH**



S12

**CYCLE STANDS**  
Product: Sheffield cycle Stand  
Material: Steel



S5/S17

**SEATING BENCH**



S10

**TIMBER FEATURE BENCH**  
Material: FSC Hardwood



S14

**RAISED PLANTER WITH TIMBER SEATING**  
Material: Powdercoated Steel



S13

**DOOR PROTECTION HOOP**



S16

**MOTORCYCLE ANCHOR**



S15

**LITTER BIN**



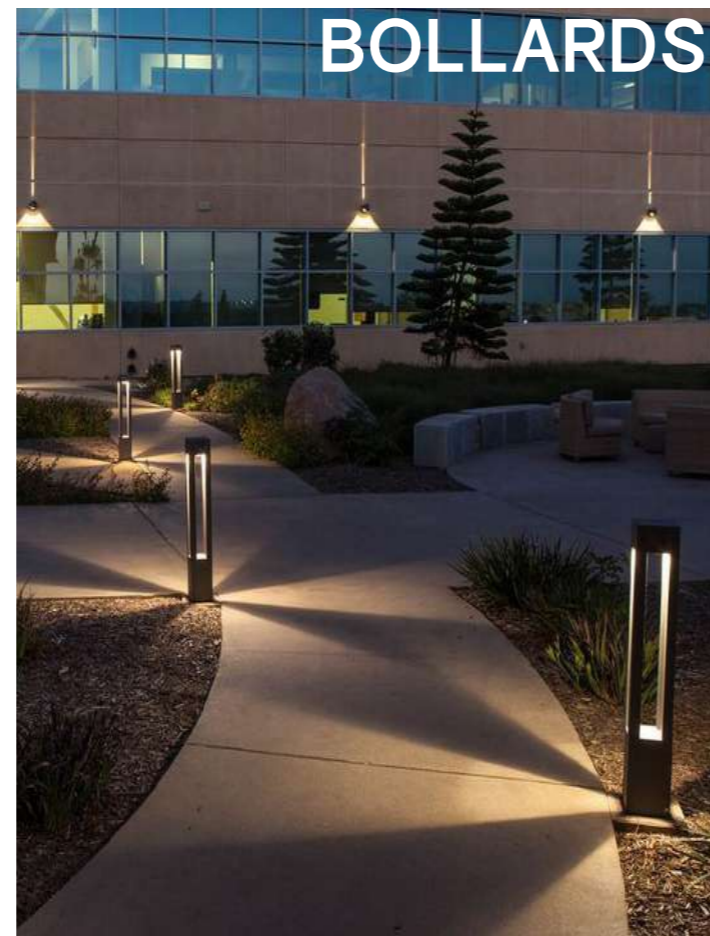
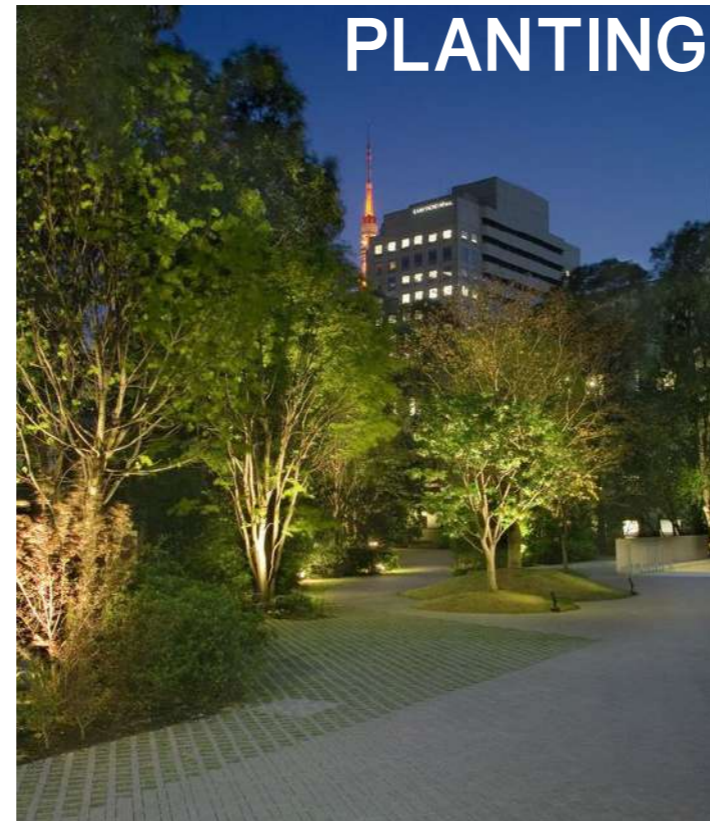
#### 4.18 Lighting Strategy

One of the key principles for the lighting strategy is to ensure a safe environment for both the staff and students on campus. This strategy will be coordinated with the security strategy to ensure the lighting and security measures compliment each other.

Decorative and feature lighting to some seating will be provided to enhance these areas, as well as architectural elements, textures and details.

Low level bollard lighting to quieter social spaces, and ambient lighting to the planting and feature trees to the entrance plazas.

### COLUMNS



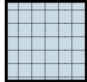




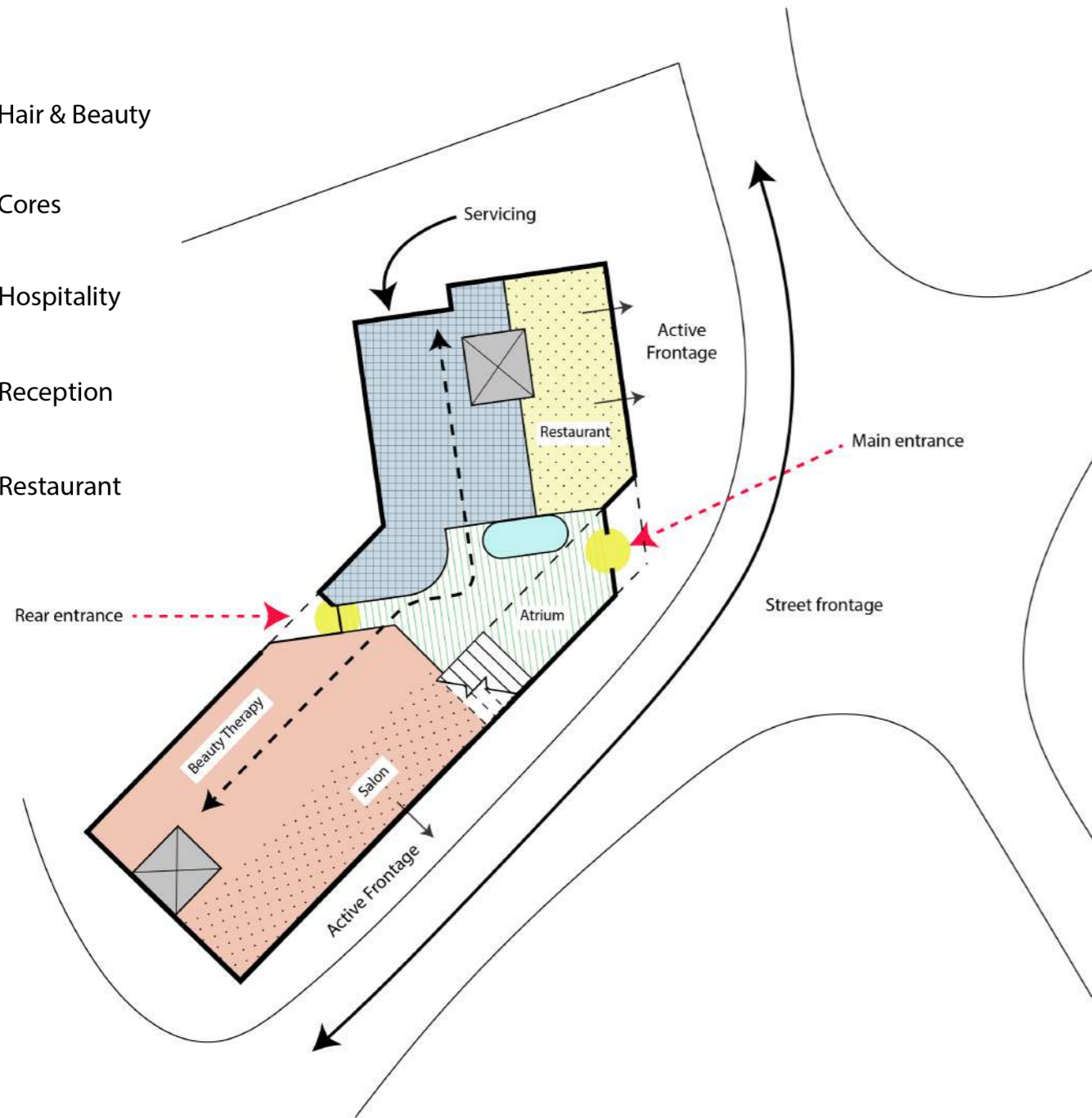
## 4.19 Plans – Building Strategy


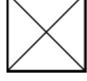

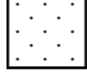
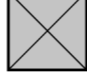
The building organisation follows a simple split: public-facing areas are situated on the ground floor, while more traditional teaching and learning are located on the upper floors.

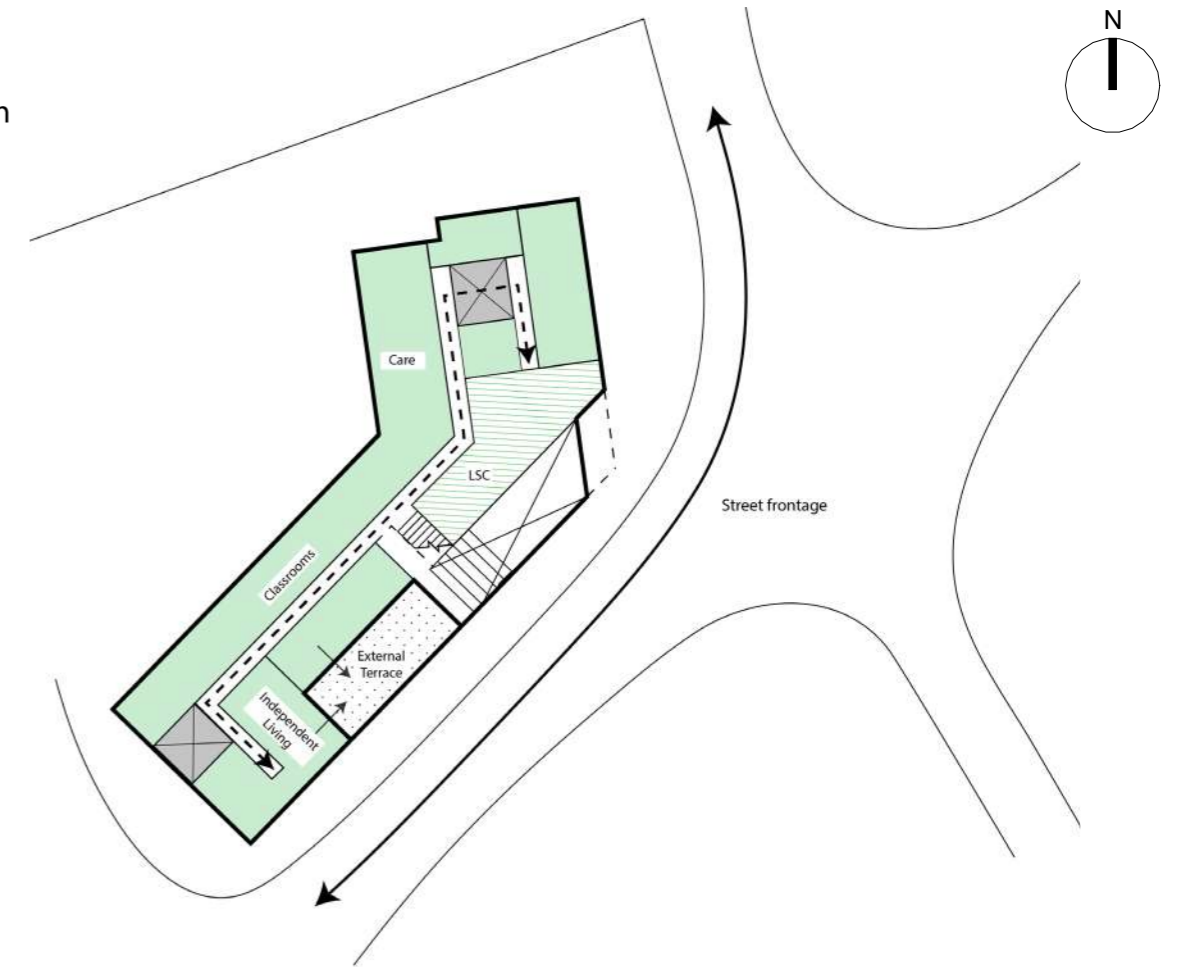
The ground floor has three large zones: hair and beauty to the south, hospitality to the north, and an atrium in the center. The two entrances open into the atrium, which acts as the social and dining space and connects the different departments.

The upper floors overlook the atrium and are arranged along a simple central circulation route. The floorplates pull back and reduce in size, ensuring good daylight distribution and creating opportunities for internal and external terraces to be created.

-  Hair & Beauty
-  Cores
-  Hospitality
-  Reception
-  Restaurant



-  General accom
-  Atrium
-  LSC
-  Terrace
-  Cores



## 4.20 Plans-Internal Layout

The general arrangement floor layouts shown here are the culmination of the work done during RIBA Stage 2 and RIBA Stage 3 and reflect the principal arrangements of accommodation discussed, tested and agreed throughout a briefing process involving the relevant college departments and college leadership team.

### 4.20.1 Ground Floor

The college is arranged over three levels. It is an 'L' shaped building with a central atrium which allows for two distinct entry points—the main pedestrian entrance and a car park/cycle park entrance both offering an equal arrival experience via the entrance plaza and the college courtyard respectively.

The atrium is a vibrant and predominantly social space. It includes the student's union and student services, wellbeing zone, student's union, dining area and the kitchen with its associated support areas.

Hair and Beauty and Hospitality departments have active street frontages on wings either side of the atrium.

The central accommodation stair featuring terraced seating (supported by 2 additional stair cores and 2 lifts) provides a vertical connection and is proposed to be a big feature in the atrium space.

