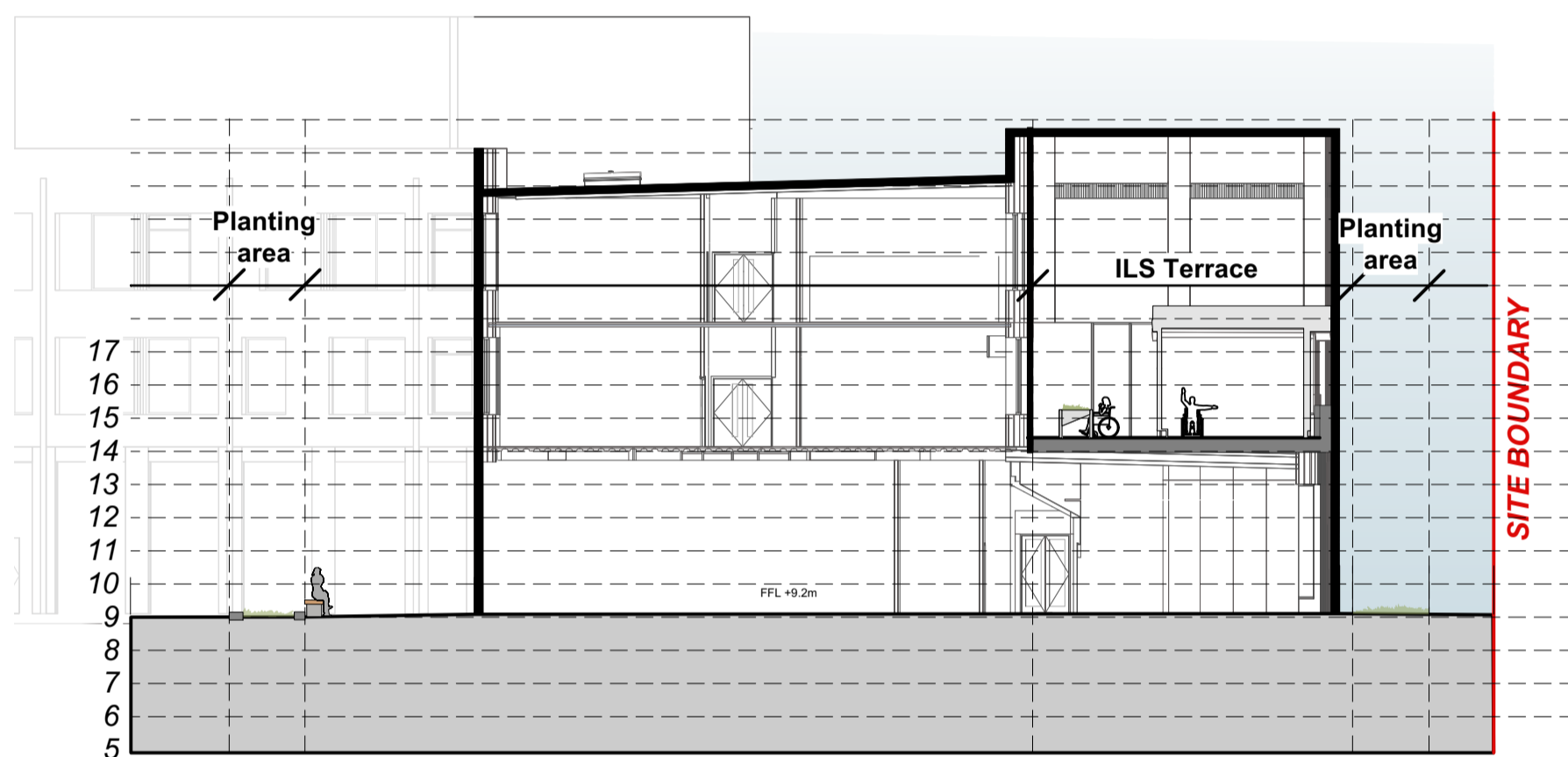
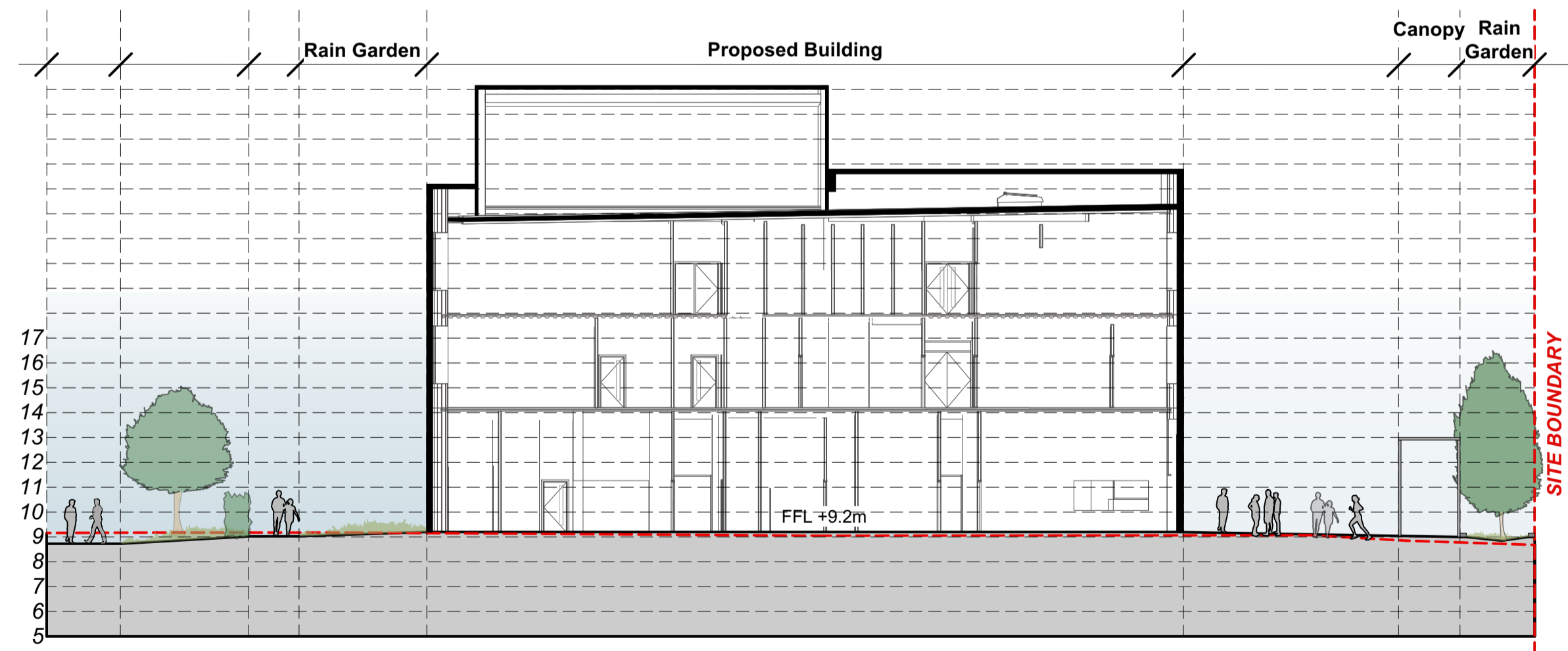


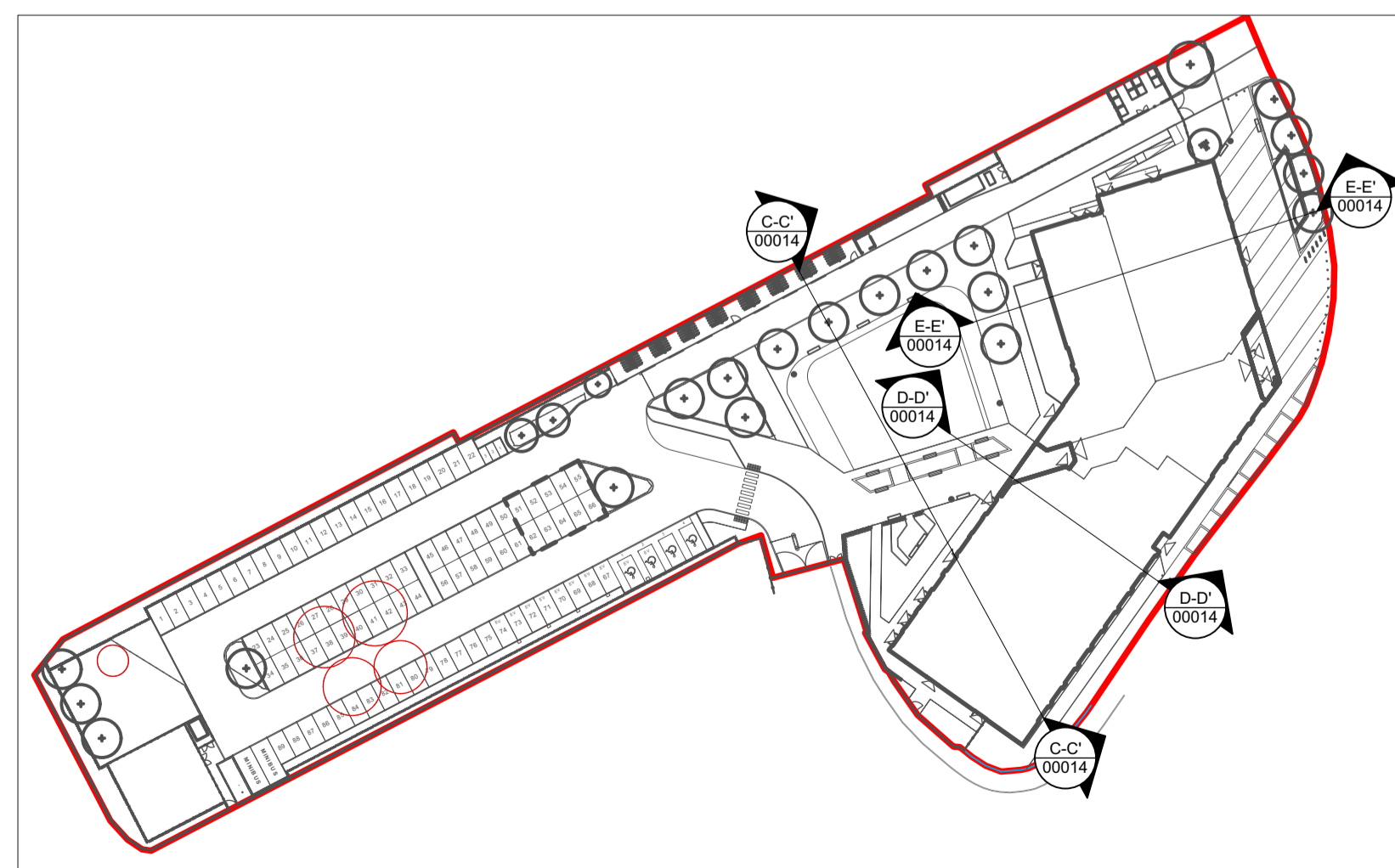
C-C' Section BB - West to East
Scale: 1:200



D-D' Section CC - West to East
Scale: 1:200



E-E' Section CC - West to East
Scale: 1:200



Note
 1. Do not scale from this drawing
 2. To be read in conjunction with Project Risk Register REF: XXX
 3. To be read in conjunction with all other Landscape Architect's drawings

ID	RISK	MITIGATION	DATE MITIGATED
RESIDUAL PROJECT RISKS			

DATE	REV	DESCRIPTION OF REVISION	DRAWN BY	APPROVED BY
20/03/2024	P04	Issued for Planning	MDS	MH
REVISIONS				

STATUS
A2 - Authorized and Accepted as Planning Application Submission

ares
 LANDSCAPE ARCHITECTS
 Ares Landscape Architects LTD
 Gatecrasher,
 51 Eyre Lane
 Sheffield
 S1 4RS
 t: 0114 276 2000
 e: hello@aresdesign.co.uk
 w: ares.eu.com

CLIENT:
Cardiff and Vale College

PROJECT TITLE:
Barry Waterfront Campus

DRAWING TITLE:
Site Section 2 of 2

DRAWING SCALE: 1:200	DRAWN BY: MDS	DRAWN DATE: 23/11/2023
PAPER SIZE: A1	APPROVED BY: MH	ALA PROJECT CODE: ALAT24

DRAWING NUMBER:
VG0201-ALA-00-XX-DR-L-00013 A2

STATUS:
P04

REVISION: