

Number of Plants	Abbreviation	Species	Specification	Height	Girth
3	Ac ca	Acer campestre	Semi-Mature: 3x: RB: Clear Stem min. 200cm	500-550cm	20-25cm
7	Ac'EI'	Acer campestre 'Elegant'	3x: Heavy Standard; clear stem minimum 200cm; 5 breaks; B	350-425cm	12-14cm
2	Ac ce	Acer campestre 'Elsrijk'	Extra Heavy Standard: 5 brks: 3x: B: Clear Stem min. 200cm	400-450cm	14-16cm
1	Al sp	Alnus x spaethii	Extra Heavy Standard: 5 brks: 3x: RB: Clear Stem min. 200cm	400-450cm	14-16cm
16	Be pe	Betula pendula	Extra Heavy Standard: 3x: RB: Clear Stem min. 200cm	400-450cm	16-18cm
22	C be	Carpinus betulus	Pleached; Frame: 1.5 x 1.2m wide; 2m trunk height; RB	3.0-4.0m	10-12cm
1	LIGSTLR	Liquidambar styraciflua 'Lane Roberts'	2x: Standard; clear stem 175-200cm; 3 breaks; RB	250-300cm	8-10cm
3	Ma ev	Malus 'Evereste'	Extra Heavy Standard: 3x: RB: Clear Stem min. 200cm	450-500cm	18-20cm
12	PSB	Prunus 'Sunset Boulevard'	3x: Heavy Standard; clear stem 175-200cm; 5 breaks; B	350-425cm	12-14cm
14	PU	Prunus 'Umineko'	3x: Extra Heavy Standard; clear stem 175-200cm; 5 breaks; B	400-450cm	14-16cm
5	Pr ap	Prunus avium 'Plena'	Semi-Mature: 3x: RB: Clear Stem min. 200cm	500-550cm	20-25cm
2	Pr cn	Prunus cerasifera 'Nigra'	Semi-Mature: 4x: RB: Clear Stem min. 200cm	450-500cm	25-30cm
4	SORAUSS	Sorbus aucuparia 'Sheerwater Seedling'	3x: Extra Heavy Standard; clear stem minimum 200cm; B	450-500cm	16-18cm
5	UC	Ulmus 'Columnella'	3x: Extra Heavy Standard; clear stem 175-200cm; 5 breaks; B	400-450cm	14-16cm
Total :97					

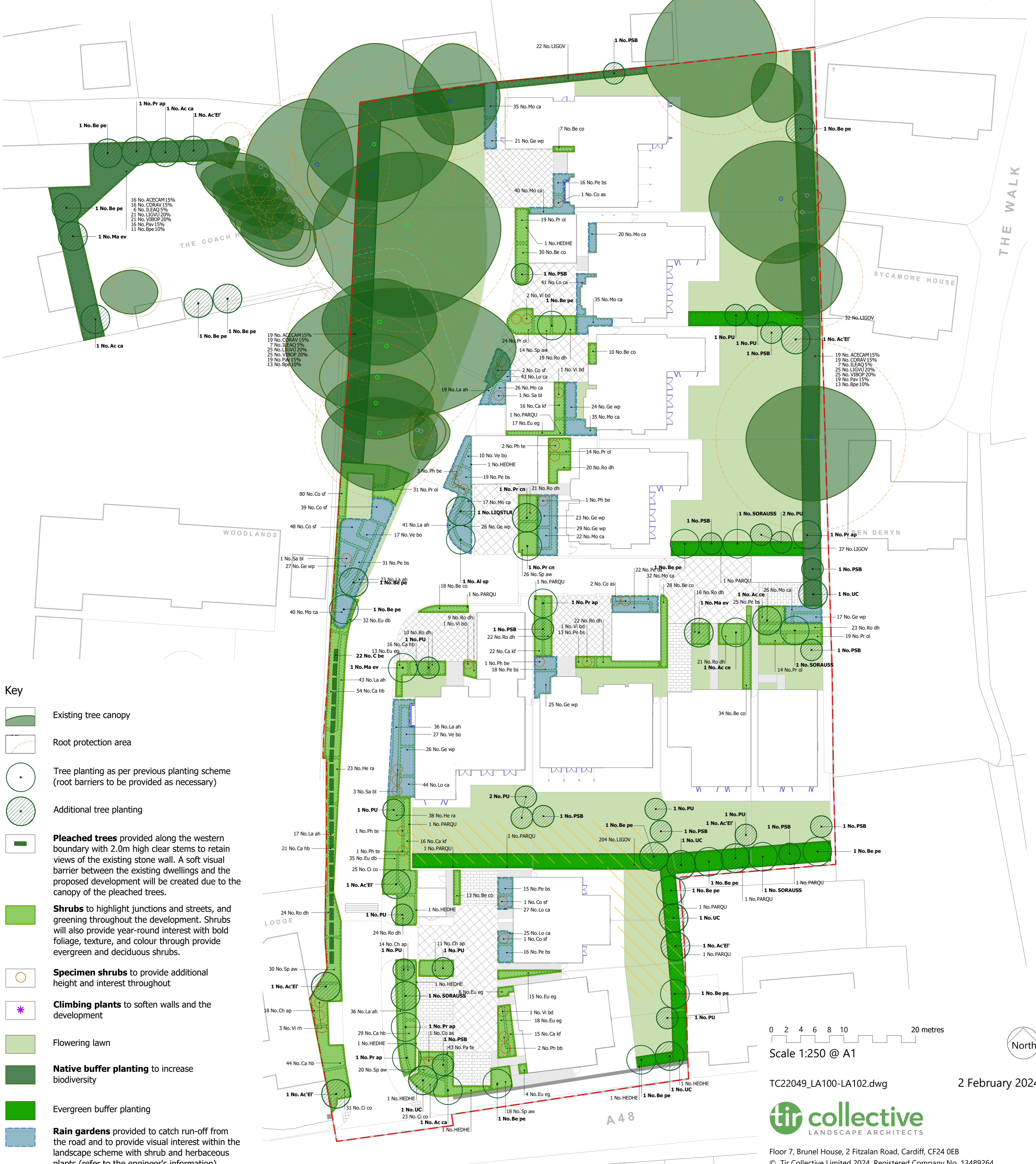
Number of Plants	Abbreviation	Species	Specification	Height	Pot Size	Density
164	Ca hb	Caryopteris x dandoniensis 'Heavenly Blue'	Branched: 4 brks: C	30-40cm	3L	0.6Ctr
43	Ch ap	Choisya 'Aztex Pear'	Bushy: 6 brks: C	40-60cm	7.5L	1Ctr
79	Cl co	Cistus x corbariensis	Bushy: 6 brks: C	40-60cm	5-7.5L	0.7Ctr
4	Co as	Cornus alba 'Sibirica'	Branched: 5 brks: C	80-100cm	10L	Counted
167	Co sf	Cornus stolonifera 'Flaviramea'	Branched: 5 brks: C	80-100cm	10L	Counted
4	Co sf	Cornus stolonifera 'Flaviramea'	Branched: 5 brks: C	80-100cm	10L	Counted
67	Eu db	Euonymus fortunei 'Dart's Blanket'	Bushy: 5 brks: C	3L	0.6Ctr	
73	Eu eg	Euonymus fortunei 'Emerald Gaiety'	Bushy: 9 brks: C	25-30cm	5-7.5L	0.7Ctr
61	He ra	Hebe rakaiensis	Bushy: 7 brks: C	30-40cm	5-7.5L	0.7Ctr
215	La ah	Lavandula angustifolia 'Hidcote'	Bushy: 9 brks: C	30-40cm	7.5L	0.7Ctr
295	LIGOV	Ligustrum ovalifolium	Bushy: 9 breaks; C	80-100cm	10L	1Ctr
43	Pa te	Pachysandra terminalis	Several Shoots: 11 brks: C	30-40cm	5-7.5L	0.6Ctr
5	Ph be	Philadelphus 'Belle Etoile'	Branched: 7 brks: C	40-60cm	10L	Counted
2	Ph bb	Phormium 'Bronze Baby'	Triple Crown: C	60-80cm	10L	Counted
4	Ph te	Phormium tenax	Double Crown: C	60-80cm	10L	Counted
121	Pr ol	Prunus laurocerasus 'Otto Luyken'	Bushy: 5 brks: C	40-60cm	5-7.5L	0.7Ctr
231	Ro dh	Rosa 'Fru Dagmar Hastrup'	Cutting: Bush: 3 brks: C	30-40cm	3L	0.7Ctr
5	Sa bl	Sambucus nigra Black Lace	Branched: 4 brks: C	60-80cm	10L	Counted
108	Sp aw	Spirea japonica 'Anthony Waterer'	Branched: 7 brks: C	30-40cm	5-7.5L	0.7Ctr
3	Vi rh	Viburnum rhytidophyllum	Branched: 5 brks: C	60-80cm	10L	Counted
6	Vi bd	Viburnum x bodnantense 'Dawn'	Branched: 4 brks: C	80-100cm	10L	Counted
Total :1700						

Number	Abbreviation	Species	Specification	Pot Size	Height	Density
140	Be co	Bergenia cordifolia	Full Pot: C	5L		0.6Ctr
218	Ge wp	Geranium x oxianum 'Wargrave Pink'	Full Pot: C	5L		0.6Ctr
180	Lo ca	Lobelia cardinalis	Full Pot: C	3L		0.4Ctr
175	Pe bs	Persicaria bistorta 'Superba'	Full Pot: C	3L		0.6Ctr
54	Ve bo	Verbena bonariensis	Full Pot: C	5L		0.6Ctr
Total :767						

Number	Abbreviation	Species	Specification	Density
9	HEDHE	Hedera helix	Several shoots; 3 breaks; C	Counted
11	PARQU	Parthenocissus quinquefolia	Caned; several shoots; 5 breaks	Counted
Total :20				

Number	Abbreviation	Species	Specification	Height	Pot Size	Specification	Density
69	Ca kf	Calamagrostis x acutiflora 'Kari Foerster'			5L	Full Pot: C	0.7Ctr
328	Mo ca	Molinia caerulea			2L	Full Pot: C	0.5Ctr
Total :397							

Number	Abbreviation	Species	Specification	Height	Density	Percentage Contribution
54	ACECAM	Acer campestre	1+2; Transplant - seed raised; B	100-125cm	1.25Ctr	15%
37	Bpe	Betula pendula	1+1; Transplant - seed raised; B	80-100cm	1.25Ctr	10%
54	CORAV	Corylus avellana	1+2; Transplant; B	80-100cm	1.25Ctr	15%
20	ILEAQ	Ilex aquifolium	Leader with laterals; C	60-80cm	1.25Ctr	5%
71	LIGVU	Ligustrum vulgare	Bushy; 9 breaks	100-125cm	1.25Ctr	20%
54	Pav	Prunus avium	1+1; Transplant - seed raised; B	80-100cm	1.25Ctr	15%
71	VIBOP	Viburnum opulus	1+2; Transplant - seed raised; branched; 3 breaks; B	100-125cm	1.25Ctr	20%
Total :361						



- Key**
- Existing tree canopy
 - Root protection area
 - Tree planting as per previous planting scheme (root barriers to be provided as necessary)
 - Additional tree planting
 - Pleached trees** provided along the western boundary with 2.0m high clear stems to retain views of the existing stone wall. A soft visual barrier between the existing dwellings and the proposed development will be created due to the canopy of the pleached trees.
 - Shrubs** to highlight junctions and streets, and greening throughout the development. Shrubs will also provide year-round interest with bold foliage, texture, and colour through provide evergreen and deciduous shrubs.
 - Specimen shrubs** to provide additional height and interest throughout
 - Climbing plants** to soften walls and the development
 - Flowering lawn
 - Native buffer planting** to increase biodiversity
 - Evergreen buffer planting
 - Rain gardens** provided to catch run-off from the road and to provide visual interest within the landscape scheme with shrub and herbaceous plants (refer to the engineer's information)

0 2 4 6 8 10 20 metres
Scale 1:250 @ A1

TC22049_LA100-LA102.dwg 2 February 2024