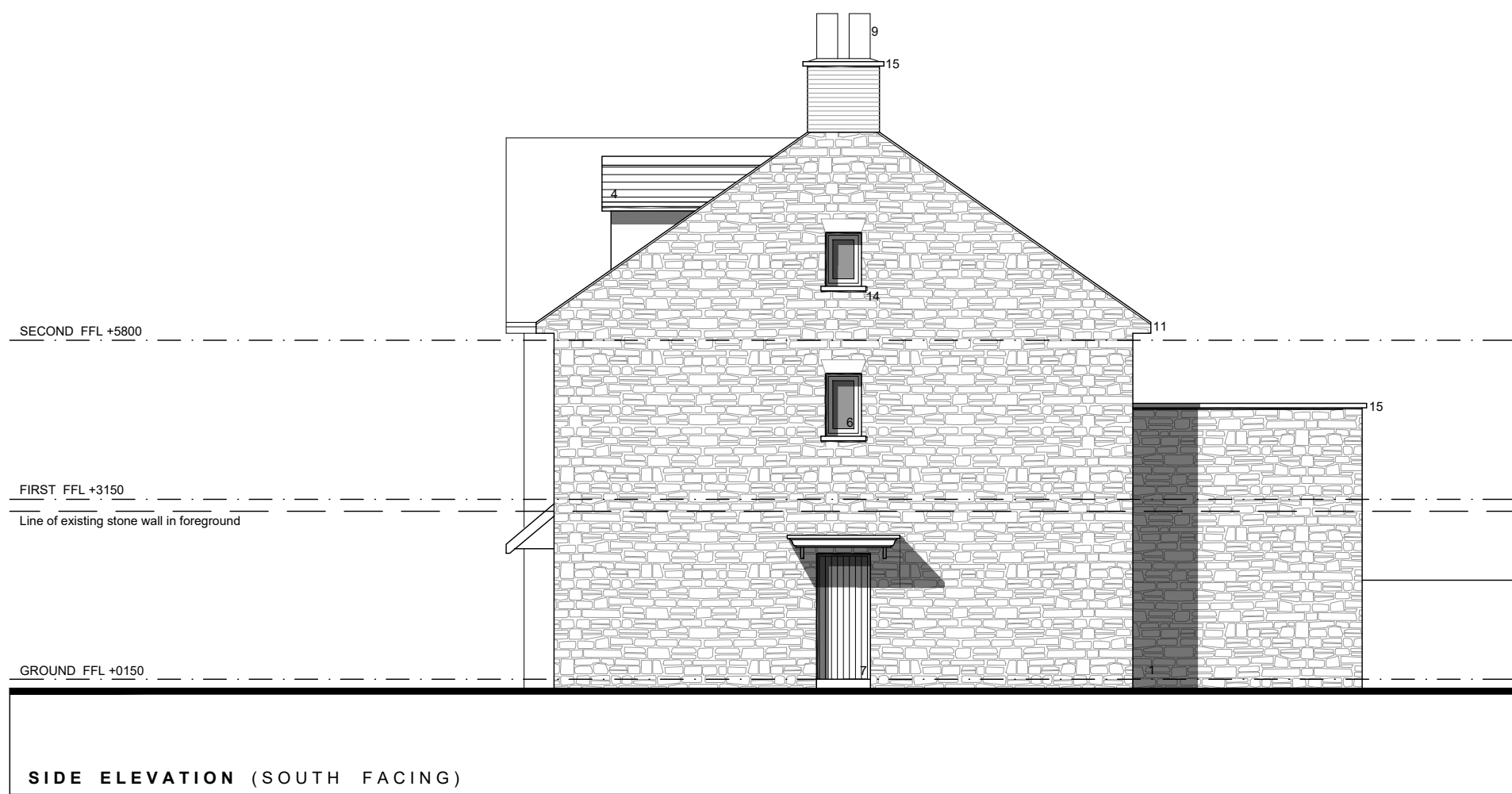




**MATERIAL KEY**

1. Bradstone Keinton Stone or similar
2. Facing brickwork (stock)
3. Brick arches / quoins / plinths
4. Cement fibre riven edge slate
5. Black cladding
6. Dark coloured window and door frames with clear double glazing
7. Timber entrance doors
8. Colour coated pergola
9. Terracotta chimney pots
10. Lead dormers
11. Dark coloured fascias, soffits and rainwater goods
12. Rooflights
13. Reconstituted stone window surrounds
14. Reconstituted stone cills
15. Reconstituted stone copings
16. Glass balustrade
17. Metal balustrade
18. Dark coloured garage doors
19. Render
20. Timber posts



Rev A 13.05.24 - South facing elevation windows as per north facing elevation  
 South facing elevation changed to all stone

**CWA** C. W. ARCHITECTS Ltd  
 Grosvenor House, 8 Park Grove, Cardiff CF10 3BN  
 Tel : +44 (0)2920 223123 Fax : +44 (0)2920 388367 E-Mail office@cwarchitects.co.uk

Project Name :	Bolston House, Bonvilston
Project Ref :	SP612

Drawing Title :	PLOTS ELEVEN - FOURTEEN - Proposed Elevations_2	Scale :	1:100 @ A3
Drawing Number :	P45		

Revision:	A	Drawn by:	rb	Date:	Mar' 2024
-----------	---	-----------	----	-------	-----------