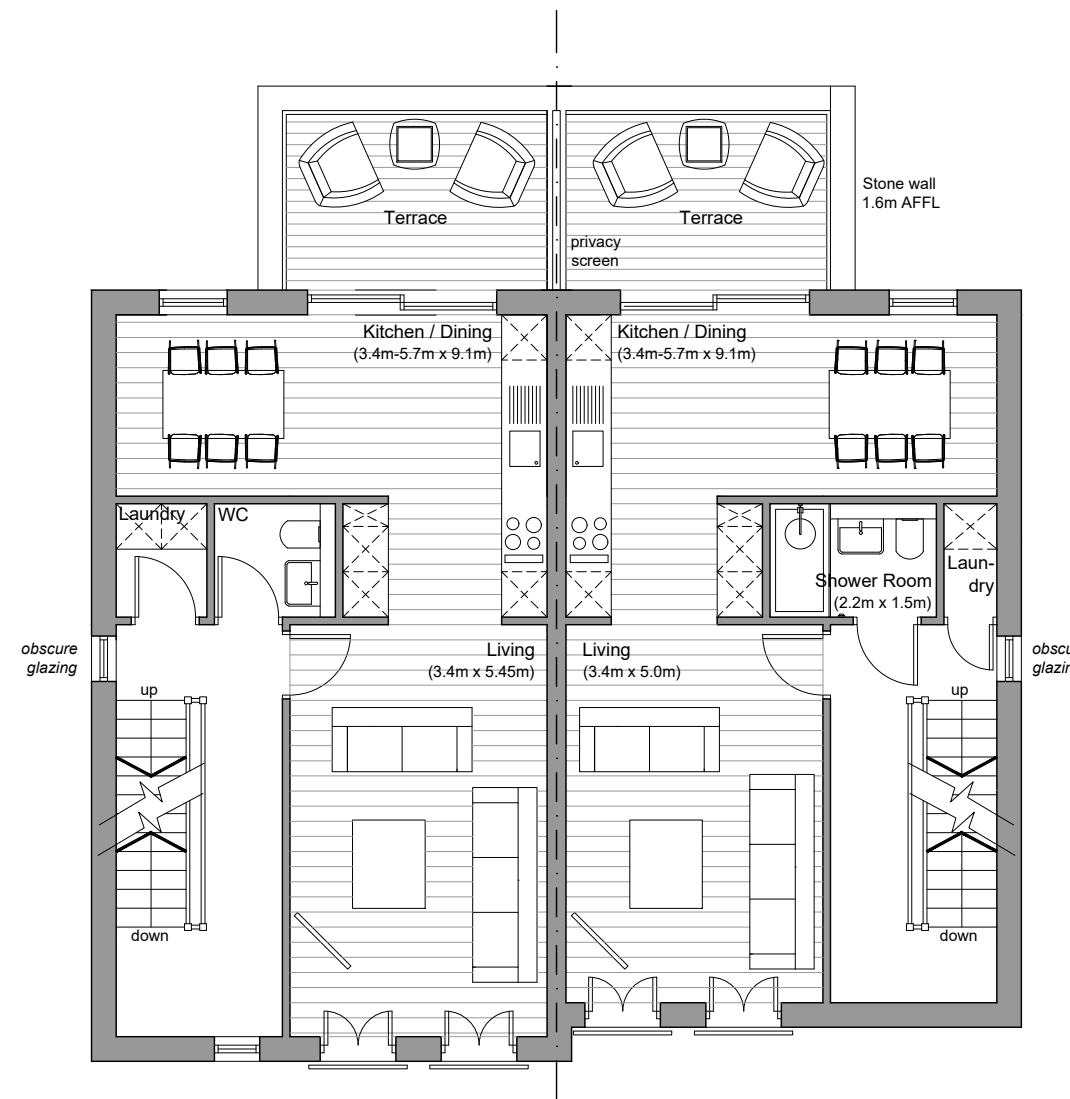
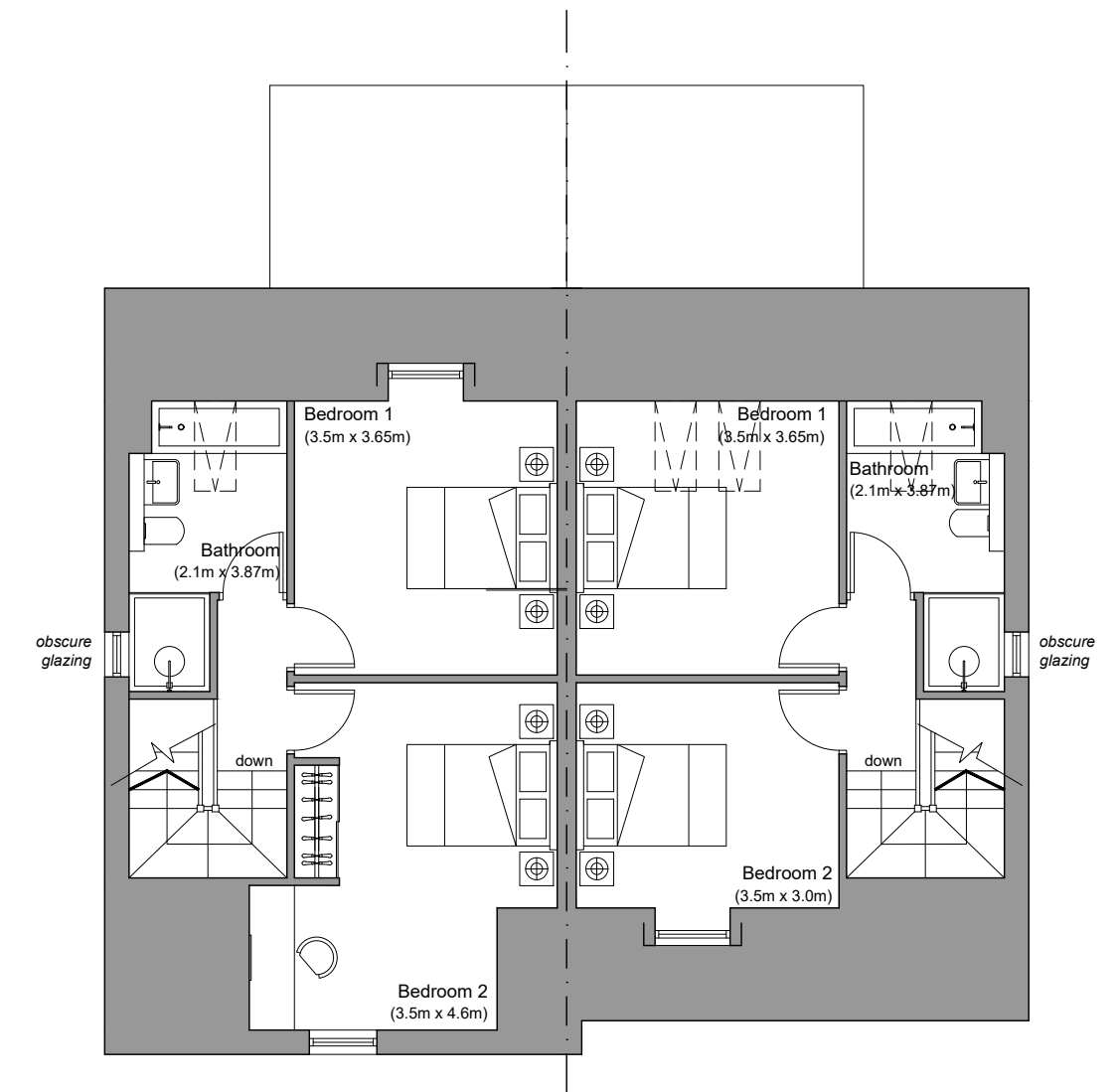


GROUND FLOOR

FLAT 1 (1-BED)- 57.6 sqm/ 620 sqft TOTAL
 FLAT 2 (2-BED DUPLEX)- 106.2 sqm/ 1143 sqft TOTAL
 FLAT 3 (1-BED)- 57.6 sqm/ 620 sqft TOTAL
 FLAT 4 (2-BED DUPLEX)- 93.4 sqm/ 1005 sqft TOTAL



FIRST FLOOR



SECOND FLOOR

Rev A 13.05.24 - Windows amended in south facing elevation windows to match north facing elevation
 Drawing paper size changed from A3 to A2

CWA C. W. ARCHITECTS Ltd
 Grosvenor House, 6 Park Grove, Cardiff CF10 3BN
 Tel: +44 (0)2920 223123 Fax: +44 (0)2920 388367 E-Mail: office@cwarchitects.co.uk

Project Name : Bolston House, Bonvilston
 Project Ref : SP612

Drawing Title : FLOORS ELEVEN - FOURTEEN - Proposed Floor Plans Scale : 1:100 @ A3
 Drawing Number : P42

Revision: A Drawn by: rb Date: Mar' 2024