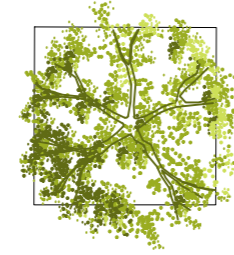


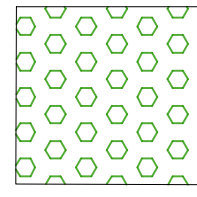
### Woodland Tree Planting Species (to be selected from)

Table with 7 columns: Species, Form, Age, Girth, Height, Clear Stem, Root. Lists species like Acer campestre, Alnus glutinosa, Betula pendula, etc.



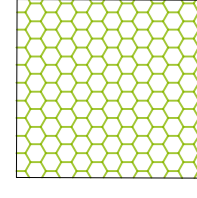
### Amenity Tree Planting Species (to be selected from)

Table with 7 columns: Species, Form, Age, Girth, Height, Clear Stem, Root. Lists species like Acer campestre, Acer griseum, Acer platanoides, etc.



### Woodland Understory / Edge Mix

Table with 8 columns: Species, Root, Height, Habit, Form, Age, Centres (m), Mix %. Lists species like Acer campestre, Cornus sanguinea, Corylus avellana, etc.



### Native Shrub Mix

Table with 8 columns: Species, Root, Habit, Form, Age, Density, Mix %. Lists species like Cornus sanguinea, Euonymus europaeus, Ligustrum vulgare, etc.



### Native Hedge Mix

Table with 8 columns: Species, Root, Height, Habit, Form, Age, Centres (m), Mix %. Lists species like Acer campestre, Crataegus monogyna, Corylus avellana, etc.

### EM8 Meadow Mixture for Wetlands (Sow at 50Kg/hectare or 5g/m2)

Composition: Emorgate EM8 (or similar approved) contains species suitable for seasonally wet soils and is based on the vegetation of traditional water meadows. Soils in wet meadows may flood for short periods in winter, but are usually well drained in summer.

### Wild Flowers (20%)

Table with 3 columns: % Latin name, Common name. Lists species like Achillea millefolium, Betonica officinalis, Centaurea nigra, etc.

### Grasses (80%)

Table with 3 columns: % Latin name, Common name. Lists species like Agrostis capillaris, Alopecurus pratensis, Anthoxanthum odoratum, etc.

### Amenity Shrub Mix A

Table with 7 columns: Species, Container, Root, Height, Habit, Ctrs, %age Mix. Lists species like Choisya ternata, Ceanothus 'Blue Mound', etc.

### Amenity Shrub Mix B

Table with 7 columns: Species, Container, Root, Height, Habit, Ctrs, %age Mix. Lists species like Hebe 'White Gem', Lavandula angustifolia, etc.

### Amenity Shrub Mix D

Table with 7 columns: Species, Container, Root, Height, Habit, Ctrs, %age Mix. Lists species like Cornus stolonifera, Lonicera pileata, etc.

### Amenity Shrub Mix E

Table with 7 columns: Species, Container, Root, Height, Habit, Ctrs, %age Mix. Lists species like Euonymus fortunei, Mahonia aquifolium, etc.

### Amenity Shrub Mix F

Table with 7 columns: Species, Container, Root, Height, Habit, Ctrs, %age Mix. Lists species like Euonymus fortunei, Fuchsia 'Mrs Popple', etc.

### Amenity Shrub Mix G

Table with 7 columns: Species, Container, Root, Height, Habit, Ctrs, %age Mix. Lists species like Berberis 'Bagatelle', Cotoneaster salicifolius, etc.

### Amenity Shrub Mix H

Table with 7 columns: Species, Container, Root, Height, Habit, Ctrs, %age Mix. Lists species like Aucuba japonica, Choisya ternata, etc.

### Amenity Shrub Mix J

Table with 7 columns: Species, Container, Root, Height, Habit, Ctrs, %age Mix. Lists species like Ceanothus 'Autumnal Blue', Euonymus japonicus, etc.

### WILDFLOWER MANAGEMENT

Do not use herbicide. Control weeds before sowing. Annual weeds may be hand weeded or killed with a contact herbicide. Pre-emergent weeds should be controlled by a translocated glyphosate-based herbicide.

### BIOSECURITY

RPS GROUP ARE COMMITTED TO THE PROTECTION OF THE UK ENVIRONMENT AND RECOGNISE THE IMPORTANCE OF RISKS POSED BY IMPORTED PESTS AND DISEASES. All trees and shrubs are to be sourced responsibly...

### INDICATIVE PLANTING SPECIFICATION

EXISTING TREES AND SHRUBS: Where existing trees & shrubs are to be retained they should be subject to a full arboricultural inspection for safety. Any surgery required shall be in accordance with BS 3998 (2010) 'Tree Work'.

### PLANTING

All plants and planting to comply with the requirements of all current / relevant British Standard specifications including BS 5834 (2014) 'Trees from Nurseries'.

### SHRUB PLANTING

Where a shrub planting mix has been specified, plants to be grouped in 1.5m (min.) to 7.0m (max.) single species groups. Larger species to be located towards the rear of planting beds.

### TOPSOIL REQUIREMENTS

To BS 3882 (2015) 'Specification for topsoil' as qualified by full contract specification. All areas shall be cultivated to a minimum depth of 150mm.

### PLANT MATERIAL TREATMENT

NB All to be British grown stock and fully hardened off. Root Dip - Proprietary Root Dip applied to all bare rooted stock (1) at time of lifting at nursery and (2) prior to planting.

### TURFED AREAS

Turf to BS 3998 (1998-A1:2013) 'Recommendations for Turf for general purposes' from an approved source. When topsoil is reasonably dry and workable, grade to smooth.

### TURFED AREAS: ESTABLISHMENT CUT

Water all grass areas to maintain healthy growth. When grass is 50mm high remove debris, litter and any stones later in dry conditions cut grass to between 25-30mm. Remove and dispose of all airings.

### PROTECTIVE FENCING

The contractor shall maintain fencing until all site works are complete. The contractor will then remove the fencing and reinstatement the ground. The fencing will remain the property of the contractor.

### MAINTENANCE

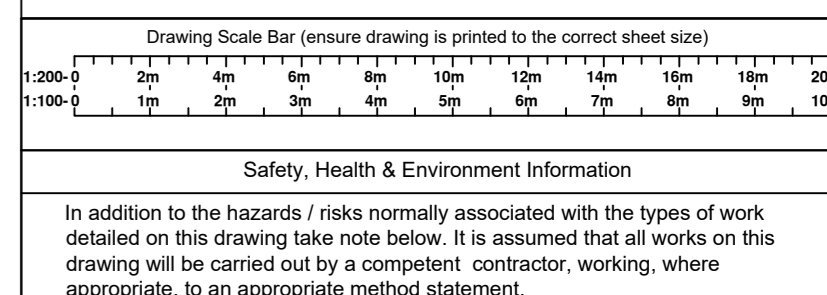
Regular visits (minimum 14 No.) required during the defects liability / rectification period to maintain all plants as in a weed and litter free condition using a combination of chemical spray and hand weeding to be agreed with the Landscape Architect.

### SAFETY PRECAUTIONS

The landscape sub-contractor is to take all safety precautions to prevent any injury to any persons. The landscape sub-contractor shall comply with the requirements of the Health & Safety at Work Act 1974 and current Construction, Design and Management Regulations (2015).

© 2021 RPS Group

Notes: 1. This drawing has been prepared in accordance with the scope of RPS's appointment with its client and is subject to the terms and conditions of that appointment. RPS accepts no liability for any use of this document other than by its client and only for the purposes for which it was prepared and provided.



### Safety, Health & Environment Information

In addition to the hazards / risks normally associated with the types of work detailed on this drawing take note below. It is assumed that all works on this drawing will be carried out by a competent contractor, working, where appropriate, in an appropriate method statement.

Construction risks Maintenance/Cleaning risks Demolition/Adoption risks

Table with 3 columns: Construction risks, Maintenance/Cleaning risks, Demolition/Adoption risks. All cells are empty.

SHRUB PLANTING

Where a shrub planting mix has been specified, plants to be grouped in 1.5m (min.) to 7.0m (max.) single species groups. Larger species to be located towards the rear of planting beds (i.e. where against a screen wall / house frontage), or towards the centre of an island planting area. Thorny species to be located centrally within the planting bed.

### TOPSOIL REQUIREMENTS

To BS 3882 (2015) 'Specification for topsoil' as qualified by full contract specification. All areas shall be cultivated to a minimum depth of 150mm. Full weed, rubbish and stones over 20mm gauge shall be removed. Earth to be rolled as required and raked in two directions. Applied to all newly planted areas (except wildflower / meadow planting), to manufacturers' recommendations where appropriate.

### TOPSOIL IMPROVEMENTS

Applied to all newly planted areas, to manufacturers' recommendations where appropriate. 1) Incorporate 75mm depth of soil conditioner into topsoil during cultivation. 2) Incorporate Erveng CRF granular fertilizer at approx 140g per pit to standard tree pit (backfill and 70g per pit to structural / container shrub planting).

### PLANT MATERIAL TREATMENT

NB All to be British grown stock and fully hardened off. Root Dip - Proprietary Root Dip applied to all bare rooted stock (1) at time of lifting at nursery and (2) prior to planting. Anti-Desiccant - Proprietary anti-desiccant to be applied to foliage of altemoriated / rootballed material in lead, specimen containers and evergreens etc.

### TURFED AREAS

Turf to BS 3998 (1998-A1:2013) 'Recommendations for Turf for general purposes' from an approved source. When topsoil is reasonably dry and workable, grade to smooth. Following contours removing all minor hollows and ridges. Cultivate soil to full depth and break up any compacted topsoil. Apply proprietary fertiliser to control perennial weeds and allow period of time to elapse as recommended by manufacturer before final cultivation.

### TURFED AREAS: ESTABLISHMENT CUT

Water all grass areas to maintain healthy growth. When grass is 50mm high remove debris, litter and any stones later in dry conditions cut grass to between 25-30mm. Remove and dispose of all airings.

### PROTECTIVE FENCING

The contractor shall maintain fencing until all site works are complete. The contractor will then remove the fencing and reinstatement the ground. The fencing will remain the property of the contractor.

### MAINTENANCE

Regular visits (minimum 14 No.) required during the defects liability / rectification period to maintain all plants as in a weed and litter free condition using a combination of chemical spray and hand weeding to be agreed with the Landscape Architect.

### SAFETY PRECAUTIONS

The landscape sub-contractor is to take all safety precautions to prevent any injury to any persons. The landscape sub-contractor shall comply with the requirements of the Health & Safety at Work Act 1974 and current Construction, Design and Management Regulations (2015).

All subject to Local Authority approval.

Table with 3 columns: P02 Wetland Meadow Mix added to bottom of swale, DB, 06, 03/22. Rev: Description, By, Ckd, Date.

RPS MAKING COMPLEX EASY logo. 321 Bradford Street, Birmingham, B5 6ET. T: 0121 6200300. E: rps@rpsgroup.com. Client: Mr P Worthing. Project: Leckwith Quays, Cardiff. Title: Indicative Landscape Planting Schedule and Specification. Status: Scale Date Created Comment: NTS @A0 Mar 2022. Task Team Manager: DMB. Information Manager: DMB. Task Information Manager: DMB. Document Number: JSL4323-RPS-XX-EX-DR-L-0008. Project Code: Designer: Zone: Level: Type: Risk: Drawing Number: RPS Project Number: JSL4323. Subability: S3. Revision: P02. rpsgroup.com