



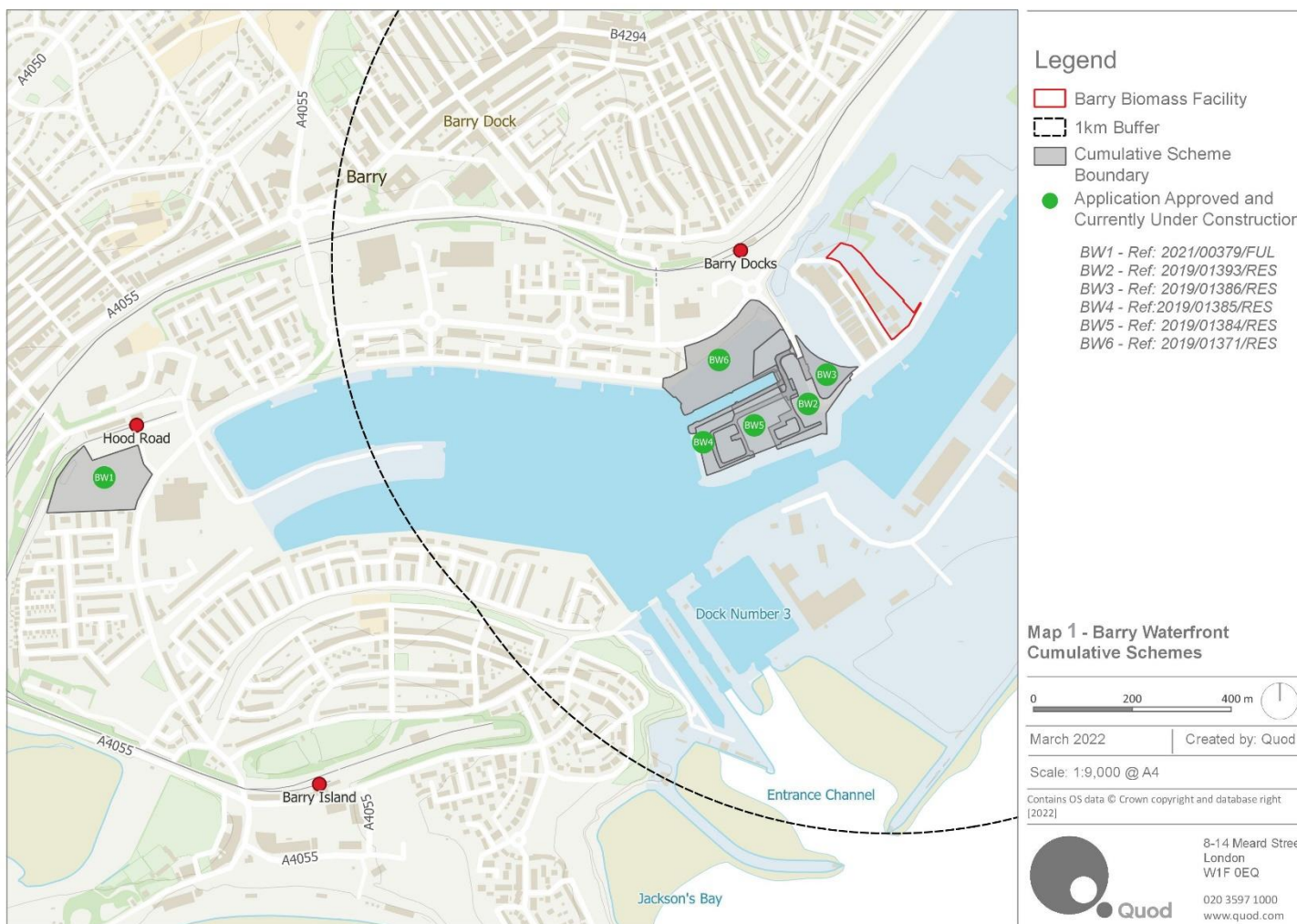
Appendix 3.6

List of Cumulative Schemes



Note

Barry Biomass Facility – Cumulative Schemes – Barry Waterfront Developments (Part 1 of 2)





Note continued

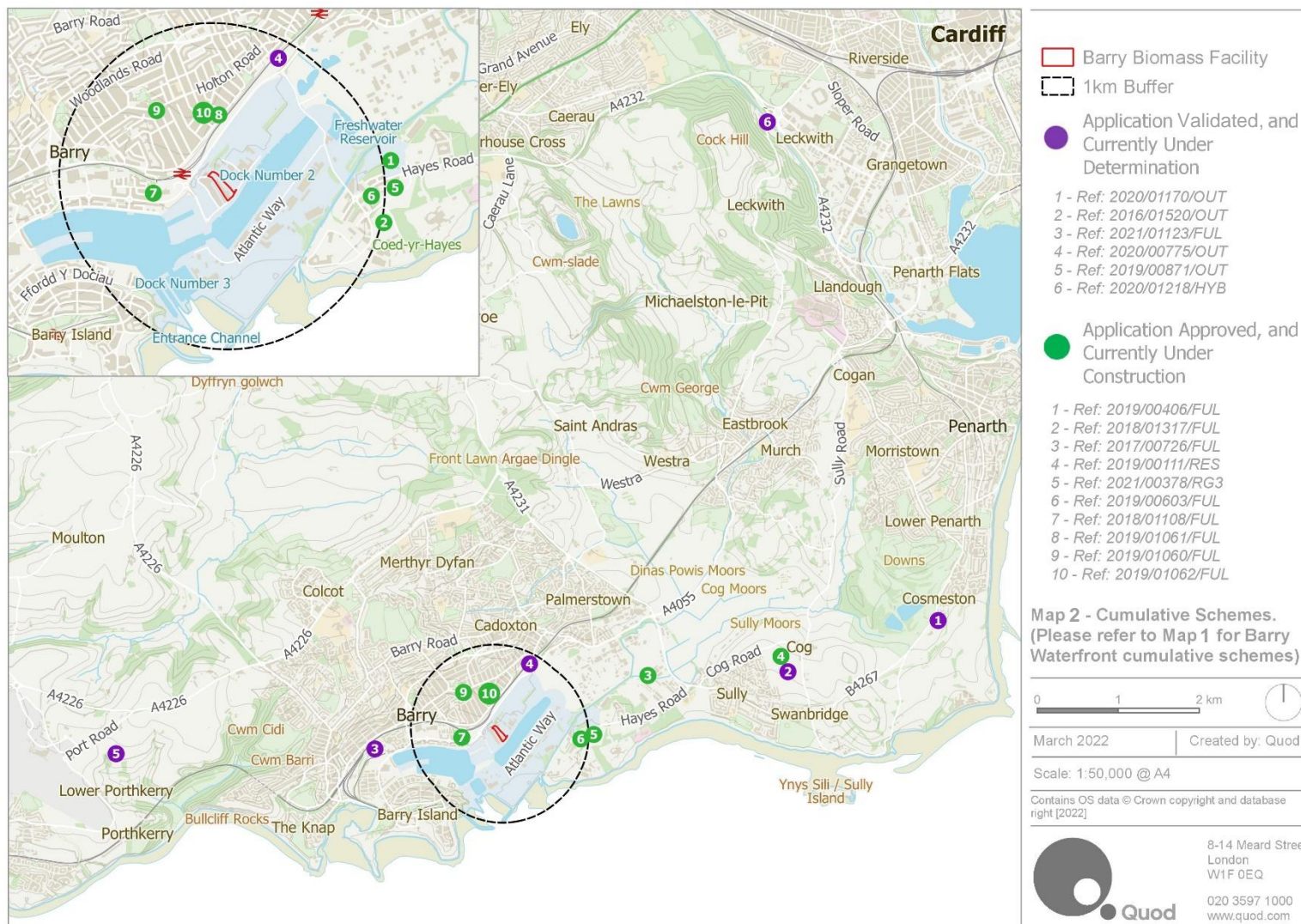
ID (cross-ref to Map)	Planning ref & link to application	Description	Decision Date	Status
BW1	2021/00379/FUL Land at Barry Waterfront	The construction of a new primary school, access, car parking, landscaping and associated works	Approved 22 July 2021	Currently under construction
BW2	2019/01393/RES East Quay, Barry Waterfront, Barry	Residential development for 58 units, together with single retail unit and all associated engineering works	Approved 1 October 2020	Currently under construction
BW3	2019/01386/RES Development land at East Quay, Barry Waterfront (to East of Cory Way)	Approval is sought for the layout, appearance, scale landscaping for a 3-storey apartment block, the Reserved Matters of Planning Permission ref. 2009/00946/OUT	Approved 16 December 2021	Currently under construction
BW4	2019/01385/RES Development parcel of East Quay, Barry Waterfront (land to West of Cory Way, South of the Graving Dock)	Reserved matters submission for 56 dwellings at East Quay, Barry Waterfront (2009/00946/OUT)	Approved 1 October 2020	Currently under construction
BW5	2019/01384/RES Land known as East Quay, Barry Waterfront, Barry	Approval is sought for the appearance, landscaping, layout and scale (the Reserve Matters) as prescribed by Condition 4 of the Outline Planning Permission (2014/00229/EAO) for East Quay, which comprises of a residential development of 62 dwellings with associated works	Approved 1 October 2020	Currently under construction
BW6	2019/01371/RES East Quay Public Open Space, Barry Waterfront	Landscaping in so far as it relates to the East Quay phase of development (Planning Permission ref. 2014/00229/EAO)	Approved 1 October 2020	Currently under construction

Please note the above includes the Barry Waterfront cumulative schemes only. Cumulative schemes that have been identified in a wider 10km radius are provided in Part 2 overleaf.



Note

Barry Biomass Facility – Cumulative Schemes – Wider area (Part 2 of 2)





Note continued

1 Schemes Currently Under Construction

ID (cross-reference to Map)	Planning Application ref.	Description	Date	Status (date of completion if applicable)
1	2019/00406/FUL Windmill Park, Hayes Road, Barry	Proposed erection of Class B1/B2/B8 Development (Phase 2), together with associated parking and access arrangements	Approved 10 July 2019	Currently under construction
2	2018/01317/FUL Spider Camp, Hayes Lane, Sully	Construction of six portal framed buildings and associated roads, division of buildings to form 43 light industrial units	Approved 3 April 2019	Currently under construction
3	2017/00726/FUL Former LME UK Ltd Site, Tank Farm Way, Sully	Extend the existing buildings, the installation of associated plant and machinery and extend an area of existing hardstanding for vehicle parking and circulation in association with the use of the site for the manufacture of precast concrete frame products	Originally submitted Sept 2017, currently Pending S106 Obligation	Currently under construction
4	2019/00111/RES Land to the South of Cog Road, Sully	The development of 325 new homes, new public open space, landscaping, ecological area, access points and highways infrastructure, pursuant to Outline Planning Permission 2013/01279/OUT	Validated February 2019	Currently under construction
5	2021/00378/RG3 Land at Hayes Wood, The Bendricks, Sully	Proposed affordable residential scheme for 53 units and associated works	Approved September 2021	Construction <u>not</u> commenced yet.



Note continued

ID (cross-reference to Map)	Planning Application ref.	Description	Date	Status (date of completion if applicable)
6	2019/00603/FUL Land at Hayes Road, Barry	The proposed development of 23 affordable homes and associated works	Approved December 2019	Currently under construction
7	2018/01108/FUL Land at Subway Road, Barry	Demolition of existing buildings and erection of 72 affordable housing units, cycle bicycle store, waste store, surface level car park and associated works.	Approved May 2019	Currently under construction
8	2019/01061/FUL Sea View Labour Club, Dock View Road, Barry	Demolition of existing single storey rear extensions; the refurbishment and change of use of the former public house (Use Class A3) to provide 20 no. affordable apartments and the erection of a new detached 2-storey apartment building to the rear to provide 8 no. affordable apartments (Use Class C3).	Approved March 2020	Currently under construction
9	2019/01060/FUL The Windsor, 166-170, Holton Road, Barry	Demolition of existing single storey rear extensions; the refurbishment and change of use of the former public house (Use Class A3) to provide 18 no. affordable apartments (Use Class C3); together with access to car parking spaces, bin store, cycle store, amenity area, ancillary works and uses	Approved December 2019	Currently under construction
10	2019/01062/FUL Castle Hotel, 44, Jewel Street, Barry	Demolition of existing outbuildings and single storey side extension; the refurbishment, reconfiguration and re-use of the existing public house (Use Class A3)/community facility; the provision of 14 no.	Approved December 2019	Currently under construction



Note continued

ID (cross-reference to Map)	Planning Application ref.	Description	Date	Status (date of completion if applicable)
		affordable apartments (Use Class C3) through change of use and a new build 2-storey side extension...		

2 Schemes Validated, awaiting Determination

	Planning Application ref.	Description	Date	Status
1	2020/01170/OUT Land at Upper Cosmeston Farm, Lavernock Road, Penarth	Outline application for residential development, a primary school, community space and public open space with all matters reserved other than access	Validated October 2020, currently under determination,	Construction <u>not</u> commenced yet – still awaiting determination
2	2016/01520/OUT Land West of Swanbridge Road, Sully	Residential development of up to 190 units with associated access and associated works	Approved November 2018	Construction <u>not</u> commenced yet. Approved subject to Legal Agreement (outstanding)
3	2021/01123/FUL	Proposed development of 34 affordable residential apartments, tourist accommodation, employment spaces, outdoor gym and associated works	Validated 2021	Construction <u>not</u> yet commenced.



Note continued

	Planning Application ref.	Description	Date	Status
	Land to the South and West of The Goodsheds, Barry			Validated 2021, Still awaiting Consultation Responses
4	2020/00775/OUT Former Railway Sidings, Ffordd y Mileniwm, Barry	Residential development (approx. 51 units) at the former sidings, Ffordd y Mileniwm along with associated infrastructure and open space	Validated 2021	Construction <u>not</u> yet commenced. Validated 2021, Still awaiting Consultation Responses
5	2019/00871/OUT Land at Model Farm, Port Road, Rhoose	Hybrid application comprising an outline application for the demolition of existing buildings and erection of 44.75ha Class B1/B2/B8 Business Park, car parking, landscaping, drainage infrastructure, ecological mitigation and ancillary works (all matters reserved aside from access) within Area A and a full application for change of use from agricultural land to country park (Use Class D2) within Area B. at Land at Model Farm, Port Road, Rhoose	Validated July 2021	Construction <u>not</u> commenced yet. Validated 2021, Still awaiting Consultation Responses
6	2020/01218/HYB Leckwith Quay, Leckwith Road, Leckwith	Hybrid planning application for residential development for up to 250 dwellings (submitted in OUTLINE), associated highway and bridge improvement / realignment works (submitted in	Validated October 2020, currently under determination,	Construction <u>not</u> commenced yet – still awaiting determination



Note continued

	Planning Application ref.	Description	Date	Status
		FULL). Development involves the demolition of all buildings on site and of the existing B4267 Leckwith Road Bridge		

3 Barry Docks Rail Station

Please have regard to the following emerging scheme in your assessments.

	Planning Application ref.	Description	Date	Status
N/A	N/A Barry Docks Transport Interchange (VoG)	Barry Docks Transport Interchange to provide a bus and taxi interchange and improve station access and facilities to increase capacity at Barry Docks Station from 2023 onwards.	N/A	Consultation on options closed December 2021. Vale of Glamorgan Council is making a bid for funds from Phase 1 of the Cardiff Capital Region, Metro Plus Regional Transport Authority (RTA) Programme



Note continued

	Planning Application ref.	Description	Date	Status
N/A	Reference not available.	Upgrade of Barry Rail Station with a new footbridge and lifts, lighting, CCTV and upgrades to station facilities to help improve accessibility.	July 2021 (site compound installed)	Works to be undertaken during 2022 with anticipated completion summer 2022. Rail station will remain open.