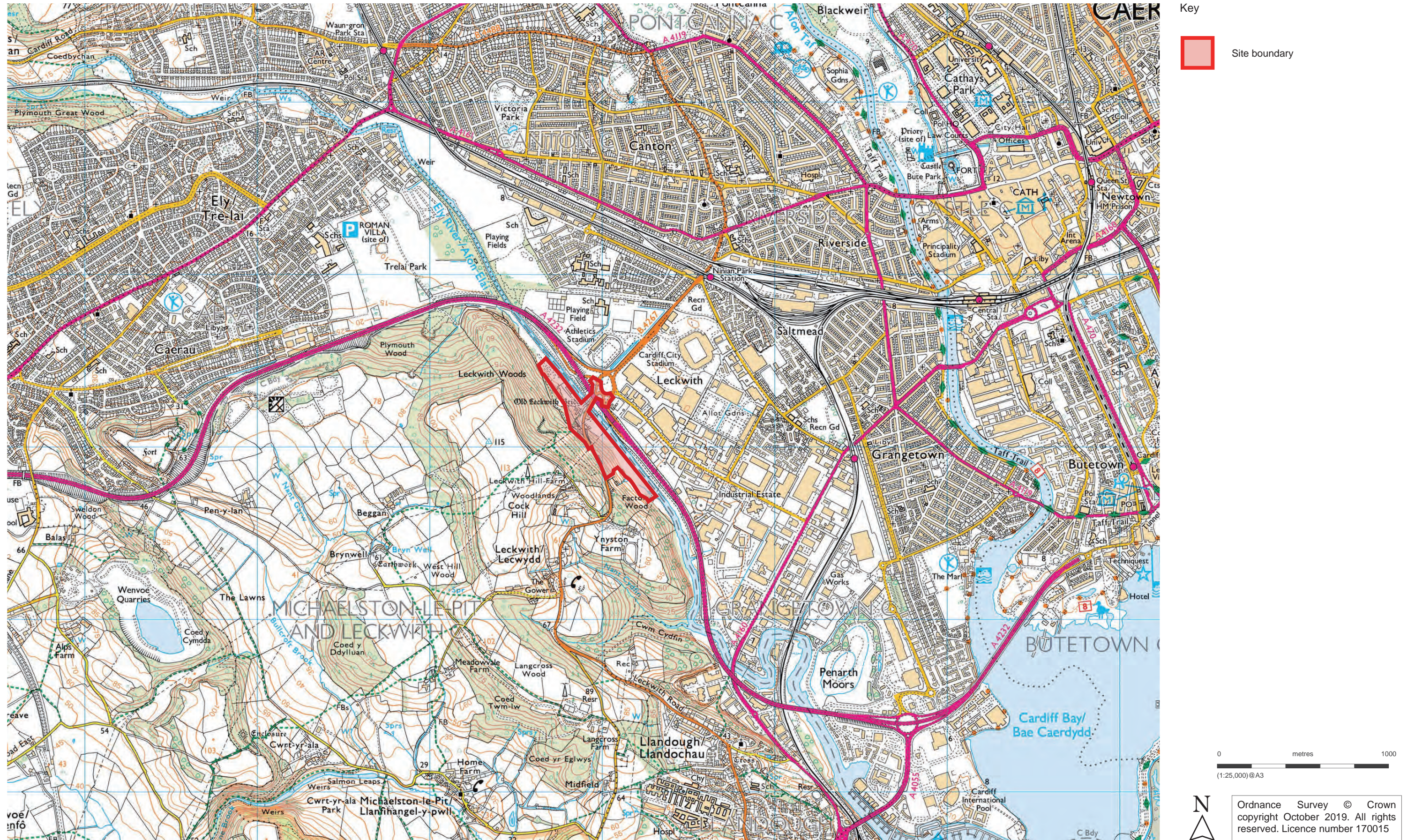




→ **LECKWITH QUAYS**
CHAPTER 6 - LVIA - APPENDIX ONE
NOVEMBER 2019





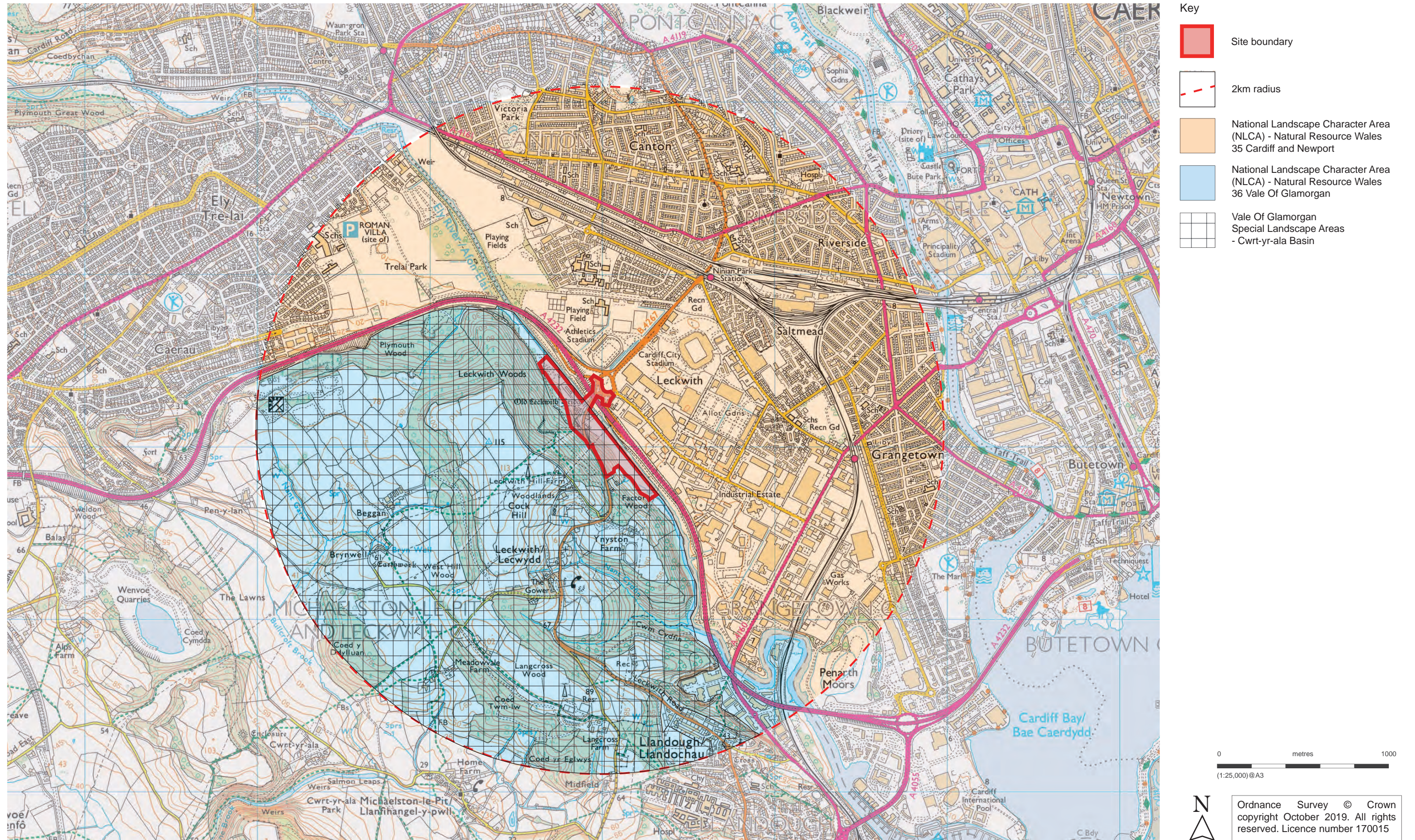
Key



Site boundary

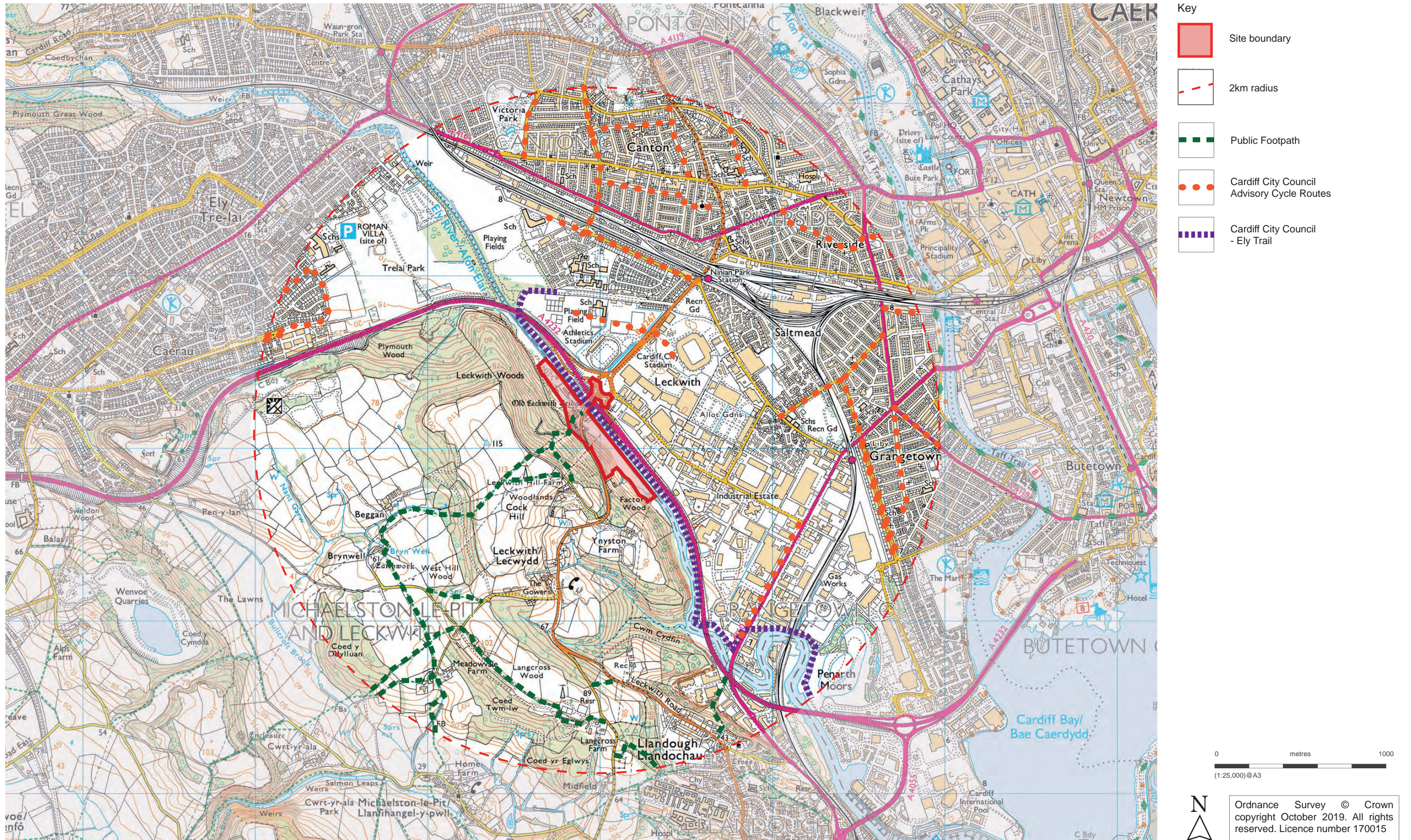


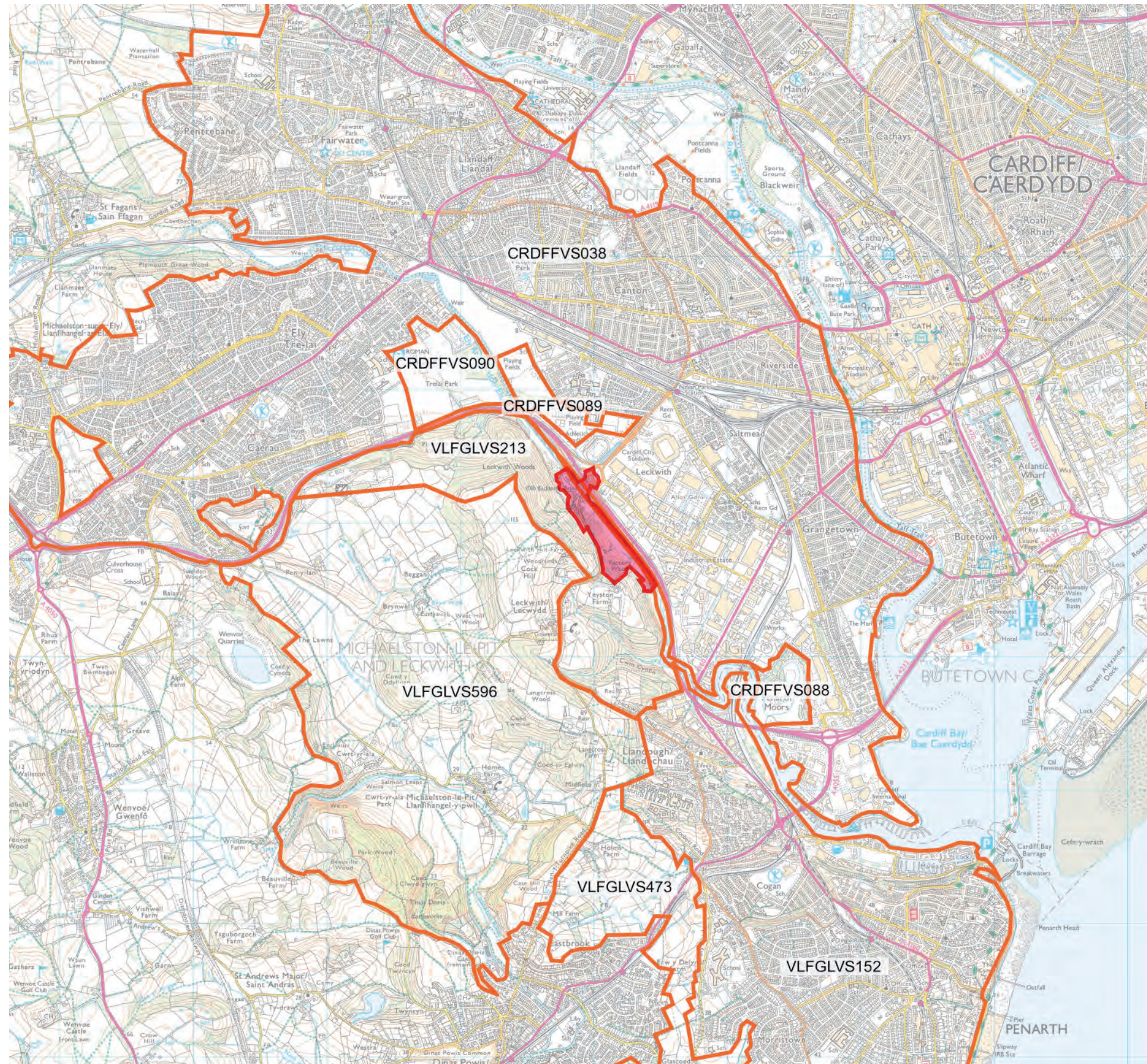
Ordnance Survey © Crown copyright October 2019. All rights reserved. Licence number 170015





0 metres 1000
(1:25,000)@A3





Key

- Site boundary
- Visual and Sensory Aspect Areas

VLFGLVS213
Southern Ely Valley

CRDFFVS038
Cardiff West

This area is a steep north-east facing scarp slope, falling from around 115m AOD towards the Ely river at around 15m AOD with Cardiff beyond. The slope is dominated by broadleaf and mixed woodland giving way to riverside vegetation and limited commercial development by the river. The valley slope forms a distinctive edge to Cardiff and presents a strong topographical and vegetated landform highly visible from the city. Settlement is sparse consisting of one farm and a few dwellings. The B4267 bisects the area at its midpoint and runs along its boundary in the south-west section. The busy A4232 western Cardiff bypass forms the area's eastern boundary and is a major influence in reducing tranquillity. The woodland appears to be unmanaged in parts. Some detractors are present including derelict land, electricity lines cutting through the woodland, the A4232 and the commercial sites adjacent to the river's edge.

The city west of the River Taff runs from Cardiff Bay across the coastal plain to the low hills on the edge of the Vale of Glamorgan and the scarp slope to the north. The area is mainly residential ranging from the well heeled late Victorian streets of Pontcanna and dense terraced streets of Grangetown through to large 20th-century council estates in Ely and Caerau and privately owned estates in Fairwater and Radyr. The old core of Llandaff with its discreet and elegant spired cathedral, visible on the A48 road approaches, is a highlight. Also the Cathedral Road area with its well treed avenues and consistent pattern of Pennant stone and Bath stone houses has a strong positive and distinctive character. Commercial development with ubiquitous national retail outlets runs from Leckwith down to the Bay including Penarth Road. Cardiff City football stadium and the adjacent athletics stadium are the main noticeable structures in this area but have limited architectural merit compared to the structures in Cardiff to the east.

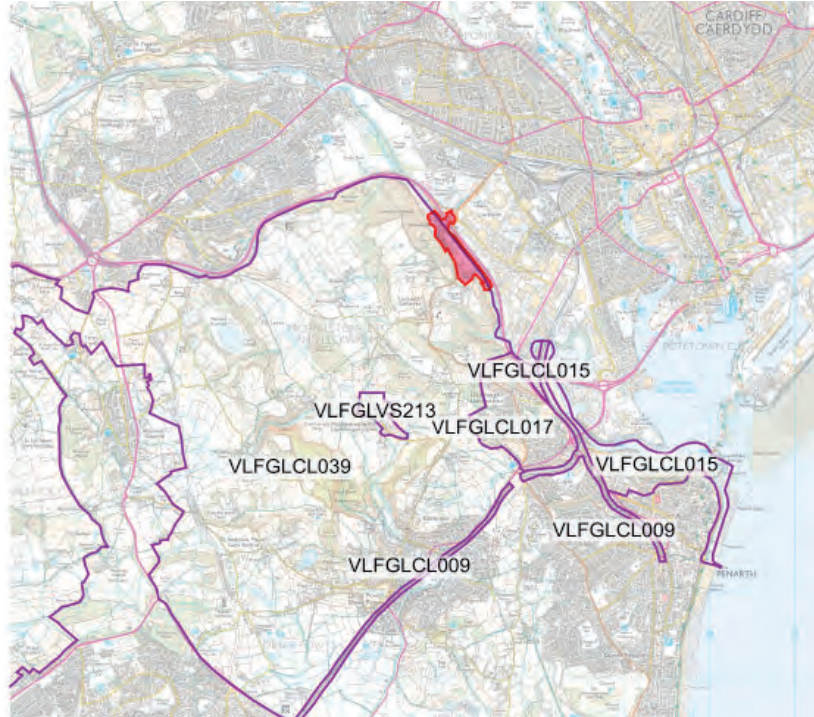
Overall Evaluation: High

The aspect area presents easily accessible views to a wooded hillside, has maintained a high integrity with partial development to the base of the hillside, and possesses a strong character due to its strong topographical form and almost continuous vegetation cover. The aspect area possesses rare elements within the study area and is therefore evaluated as high.

N

Ordnance Survey © Crown copyright October 2019. All rights reserved. Licence number 170015

CULTURAL LANDSCAPES

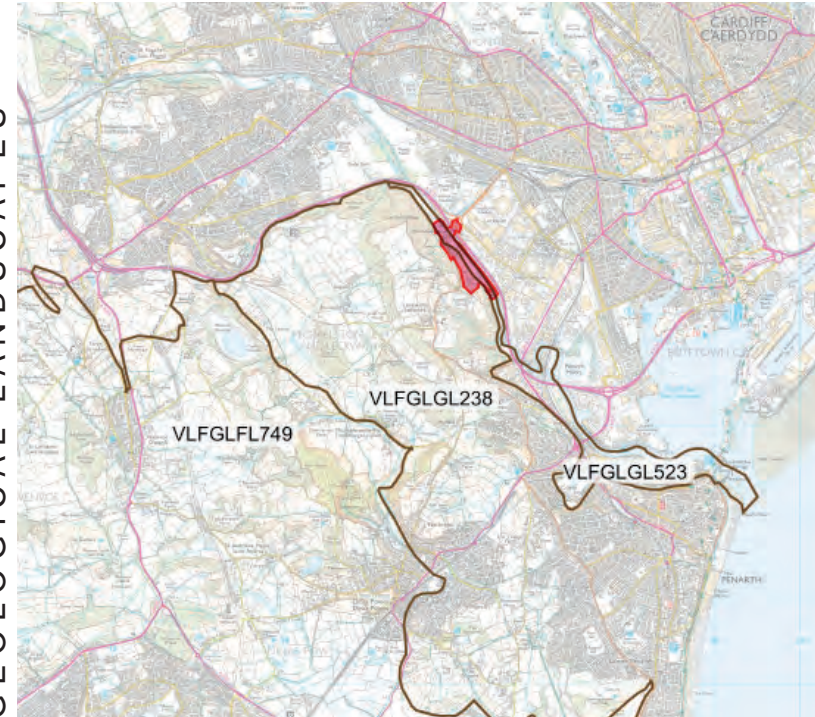


VLFGCL039 - Vale of Glamorgan Rural Landscape

This extensive Aspect Area encompasses all other AAs outside, for the most part, the principal urban areas on the eastern side of the Study Area. It is intended to encapsulate the landscape's historic past ... It contains abundant evidence of man's occupation and exploitation and its economic value (especially in the mediaeval period) ... The relatively unspoiled nature of the landscape is evidenced by the high number of designated Conservation Areas ...

Overall Evaluation: High
High as a relatively untrammelled and evolved surviving agricultural and historic landscape.

GEOLOGICAL LANDSCAPES



VLFGLGL238 - Penarth

Area of 'normal' mudrock-dominated Triassic ... and alternating limestone-shale Lower Jurassic ... characterised by low tabular hills capped with latter with steep slopes and low valley areas between underlain by former.

Overall Evaluation: Moderate
Underlying geology is significant but no significant surviving exposures reported.

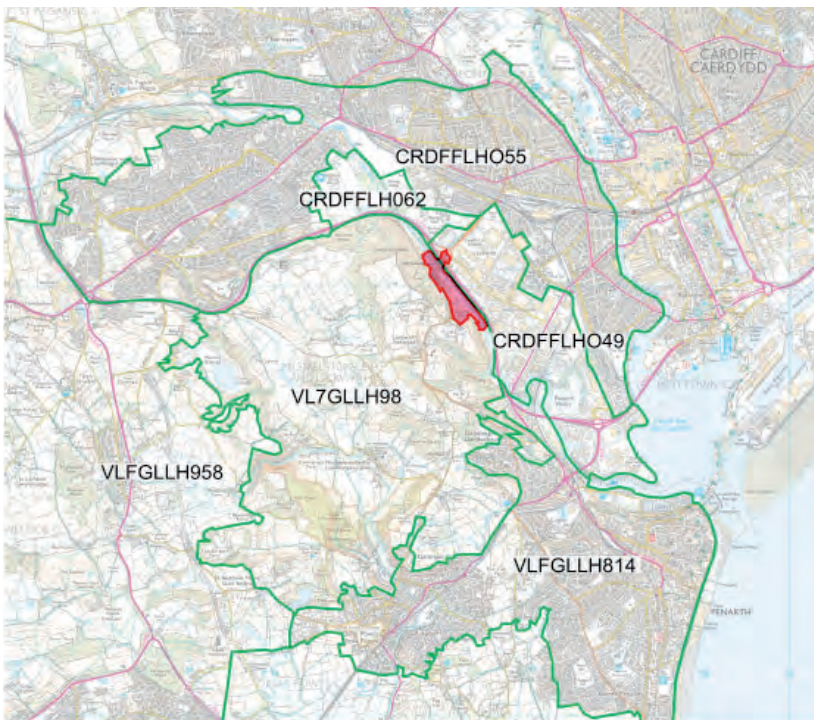
VLFGLGL523 - Penarth Flats
Narrow Aspect Area representing the largely reclaimed and engineered remnants of the south side of the Ely-Taff estuary.

Overall Evaluation: Low
Natural estuary system removed by land reclamation and construction of barrage.

Key

-  Site boundary
-  Cultural Landscape Aspect Areas
-  Geological Landscape Aspect Areas
-  Landscape Habitats Aspect Areas
-  Historic Landscape Aspect Areas

LANDSCAPE HABITATS



VLFGLH988 - Leckwith-Dinas Powys Woodlands

Steep wooded slopes interspersed by improved agricultural grasslands. The base-rich Ash woodlands support a diverse ground flora. Neutral grassland habitat in the vicinity of Llanough Hospital supports Spiny Restharrow (CCW, 2006). Lesser Horseshoe bats are also known from the area.

Evaluation: High
A significant proportion of semi-natural habitats as well as extensively managed habitat including planted woodlands provides this aspect area with significant biodiversity interest.

CRDFFLH049 - Capital and Ferry Road Retail Parks

The Aspect area covers the industrial region West of the bay. Split by a hedge lined railway line and contains Penarth Moors.

HISTORIC LANDSCAPES



VLFGLHL025 - Leckwith and Cwm Cydfin

Unenclosed woodland occupying the Leckwith and Cwm Cydfin valley sides ... little has altered since the publication of the first edition OS map (1878). Medieval remains of a dam, now destroyed, are located in the bottom of Cwm Cydfin.

Overall Evaluation: Moderate
Area of largely unenclosed, dense woodland on the valley slopes which have remained largely unaltered since the late 19th century, with evidence for earlier medieval/post-medieval industrial activity.

CRDFFHL034 - Trelai Park

The aspect area is characterised by open ground, including recreational fields, and school complexes... Some allotment gardens survive here.

Notable for the survival of a Roman villa site and a section of Roman road, which are seen as low earthworks.

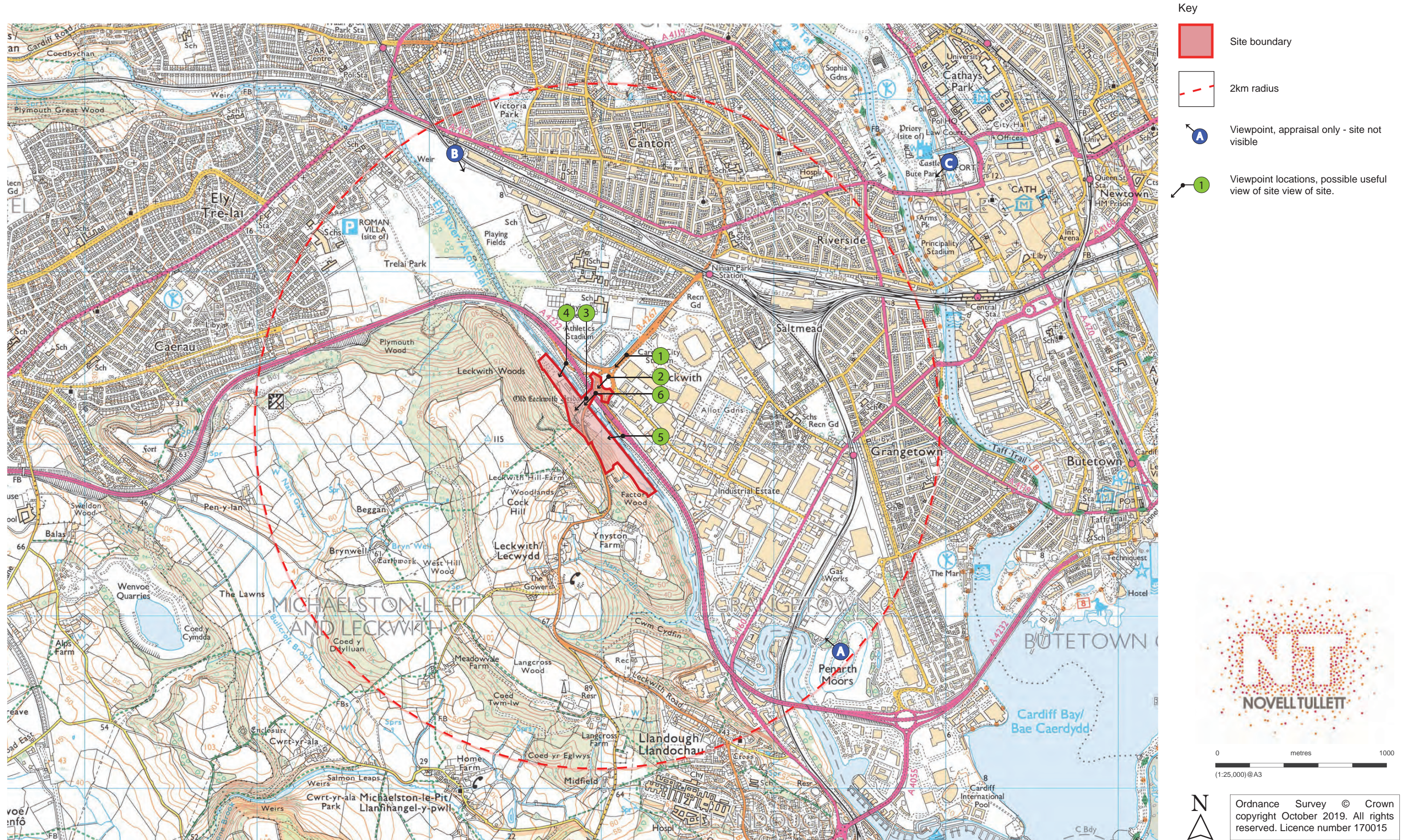
Overall Evaluation: High
Although important as a surviving area of open green space, with an important archaeological site within it, the loss of traditional boundaries and the development of parts of the area mean it is not outstanding.

CRDFFHL033 - Leckwith Moors

The Leckwith Moors is a large commercial estate, but light industry and commerce mix with leisure facilities, including Cardiff City football stadium, Cardiff International Sports Village, Cardiff International Pool and the Cardiff Bay Ice Arena.



Ordnance Survey © Crown copyright October 2019. All rights reserved. Licence number 170015

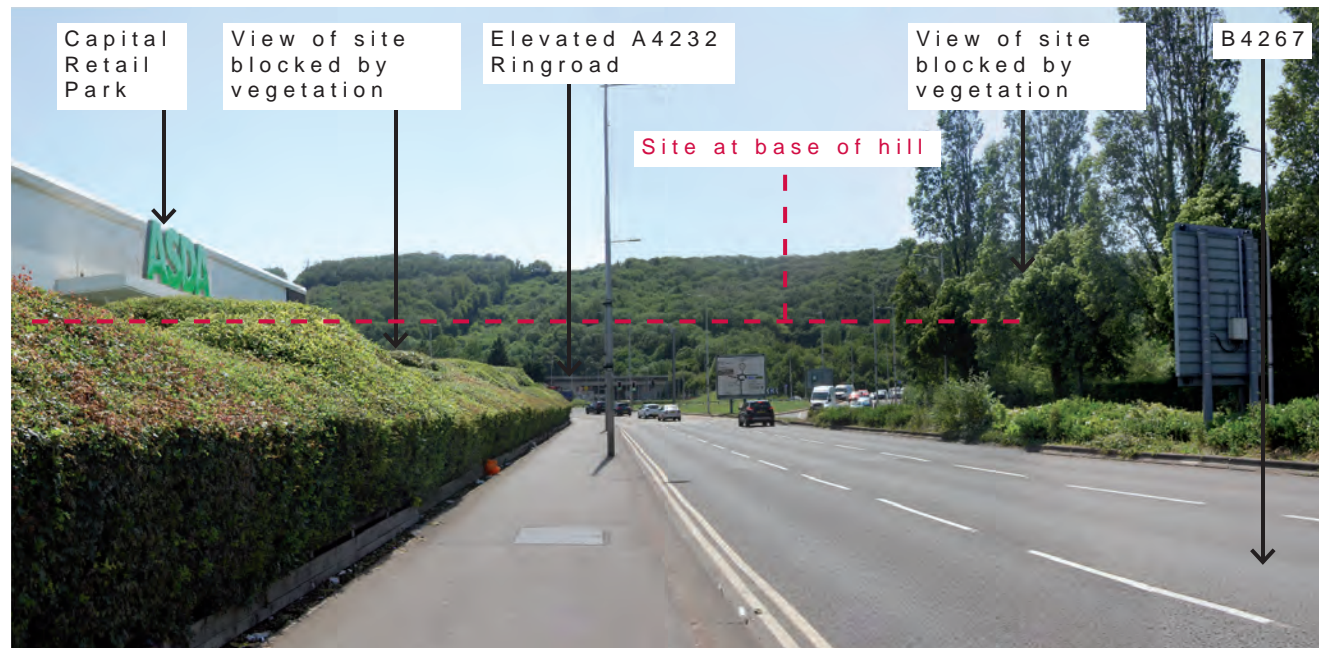


0 metres 1000
(1:25,000)@A3

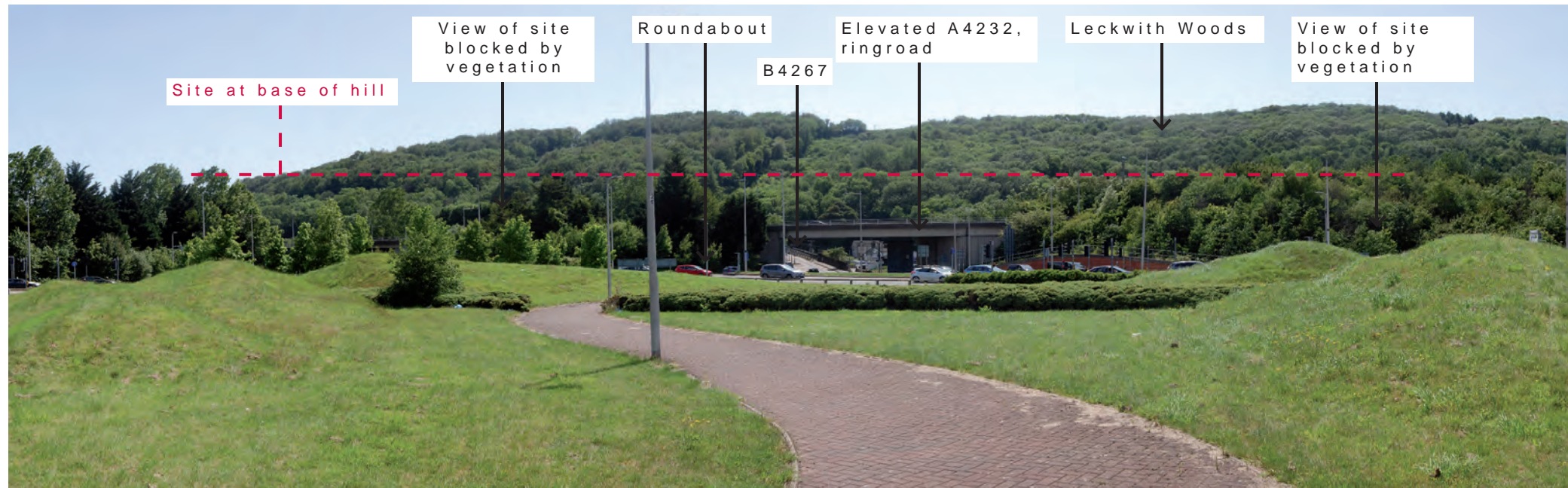
0 metres 1000
(1:25,000)@A3

Ordnance Survey © Crown copyright October 2019. All rights reserved. Licence number 170015

LECKWITH QUAYS



VIEWPOINT 1: Leckwith B4267, footway, looking south-west



VIEWPOINT 2: Leckwith Interchange, looking south-west

VIEWPOINT 1:

GRID REFERENCE	51.47221 -3.20858
ELEVATION	7m
DISTANCE FROM SITE	400m
Sensitivity of receptor	Low
Magnitude of impact	Low
Significance of effects	
Construction	Minor adverse
Operation	Minor beneficial

VIEWPOINT 2:

GRID REFERENCE	51.47120, -3.21027
ELEVATION	8m
DISTANCE FROM SITE	200m
Sensitivity of receptor	Low
Magnitude of impact	Low
Significance of effects	
Construction	Minor adverse
Operation	Minor beneficial

LECKWITH QUAYS



VIEWPOINT 3: Old Leckwith Bridge looking south-west



VIEWPOINT 4: Ely Trail, looking west-southwest

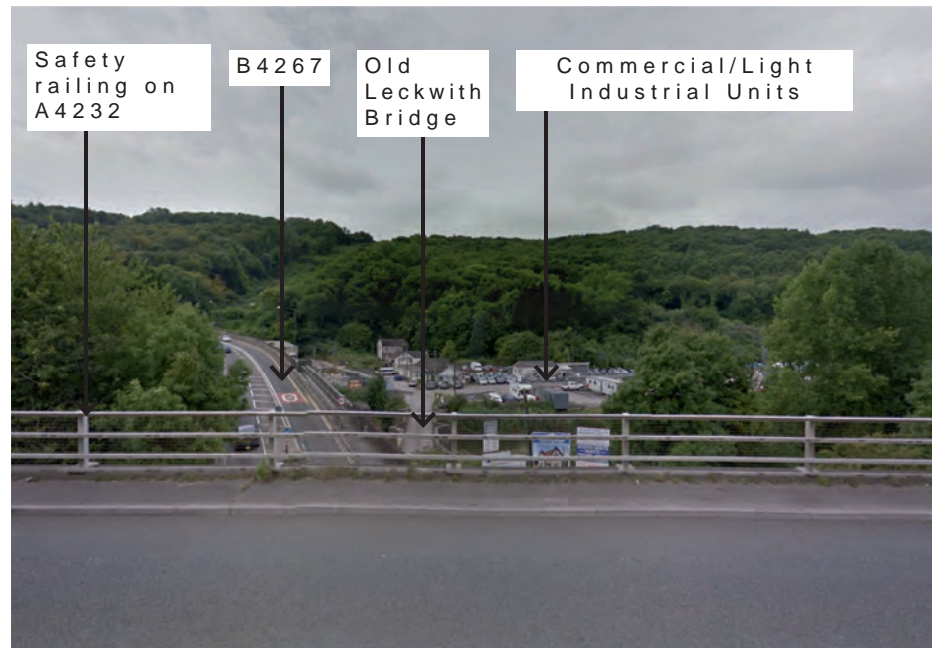
VIEWPOINT 3 :	
GRID REFERENCE	51.46994 -3.21197
ELEVATION	7m
DISTANCE FROM SITE	0m
Sensitivity of receptor	Medium
Magnitude of impact	Medium
Significance of effects	
Construction	Moderate adverse
Operation	Minor adverse

VIEWPOINT 4:	
GRID REFERENCE	51.47120, -3.21027
ELEVATION	9m
DISTANCE FROM SITE	20m
Sensitivity of receptor	Medium
Magnitude of impact	Medium
Significance of effects	
Construction	Moderate adverse
Operation	Moderate adverse

LECKWITH QUAYS



VIEWPOINT 5: Ely Trail, looking west-northwest



VIEWPOINT 6: A4232, looking west

VIEWPOINT 5:	
GRID REFERENCE	51.46788 -3.20892
ELEVATION	10m
DISTANCE FROM SITE	25m
Sensitivity of receptor	Medium
Magnitude of impact	Medium
Significance of effects	
Construction	Moderate adverse
Operation	Moderate adverse

VIEWPOINT 6:	
GRID REFERENCE	51.47020 -3.21128
ELEVATION	20m
DISTANCE FROM SITE	0m
Sensitivity of receptor	Low
Magnitude of impact	Medium
Significance of effects	
Construction	Moderate adverse
Operation	Minor adverse

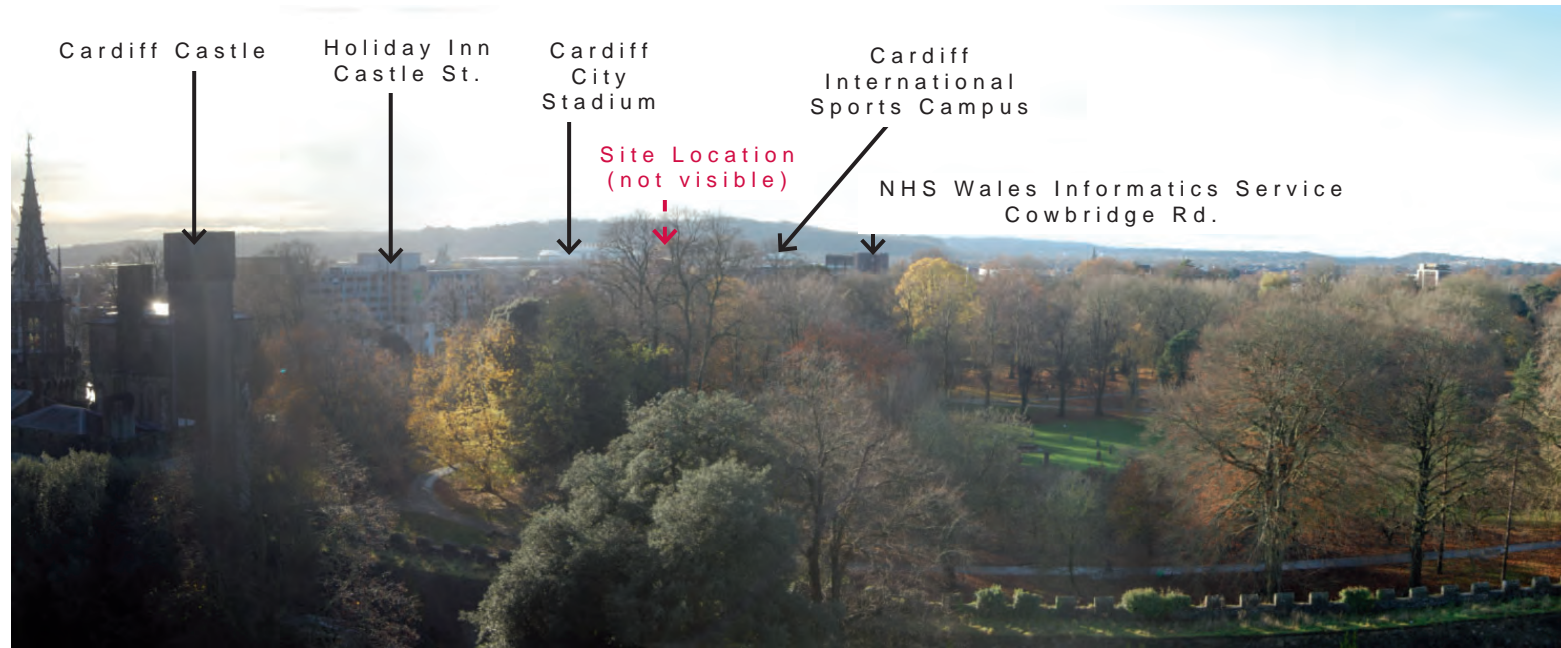
LECKWITH QUAYS



VIEWPOINT A: Grangemoor Park, looking north-west



VIEWPOINT B: Canton, footbridge over railway looking south-west



VIEWPOINT C: Roof of the Norman Keep, Cardiff Castle, looking south-west

