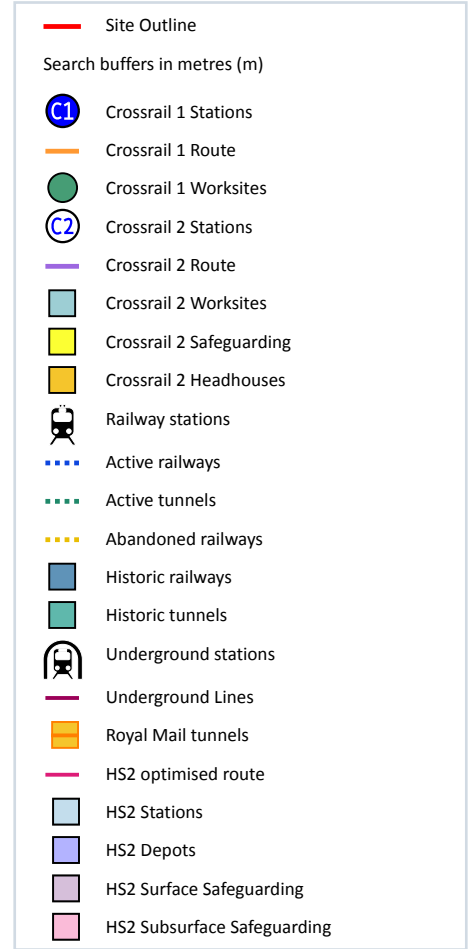
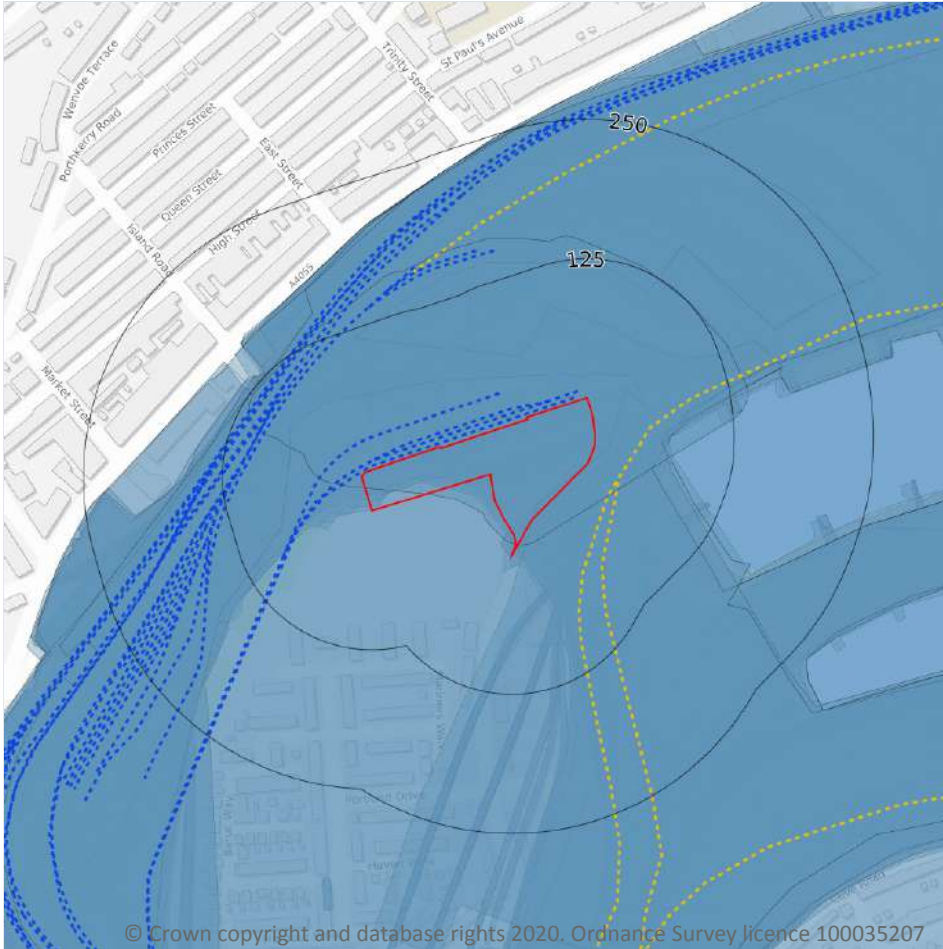


21 Railway infrastructure and projects



21.1 Underground railways (London)

Records within 250m

0

Details of all active London Underground lines, including approximate tunnel roof depth and operational hours.

This data is sourced from publicly available information by Groundsure.

21.2 Underground railways (Non-London)

Records within 250m

0

Details of the Merseyrail system, the Tyne and Wear Metro and the Glasgow Subway. Not all parts of all systems are located underground. The data contains location information only and does not include a depth assessment.

This data is sourced from publicly available information by Groundsure.

21.3 Railway tunnels

Records within 250m

0

Railway tunnels taken from contemporary Ordnance Survey mapping.

This data is sourced from the Ordnance Survey.

21.4 Historical railway and tunnel features

Records within 250m

47

Railways and tunnels digitised from historical Ordnance Survey mapping as scales of 1:1,250, 1:2,500, 1:10,000 and 1:10,560.

Features are displayed on the Railway infrastructure and projects map on **page 128**

Location	Land Use	Year of mapping	Mapping scale
On site	Railway Sidings	1954	1250
On site	Railway Sidings	1971	1250
On site	Railway Sidings	1954	2500
On site	Railway Sidings	1936	2500
On site	Railway Sidings	1900	2500
On site	Railway Sidings	1920	2500
On site	Railway Sidings	1921	10560
On site	Railway Sidings	1938	10560
On site	Railway Sidings	1936	10560
On site	Railway Sidings	1915	10560
On site	Railway Sidings	1898	10560
On site	Railway Sidings	1982	10000
On site	Railway Sidings	1991	10000
On site	Railway Sidings	1973	10000
On site	Railway Sidings	1965	10560
5m SE	Railway Sidings	1920	2500
19m SE	Railway Sidings	1990	1250



Location	Land Use	Year of mapping	Mapping scale
20m N	Railway Sidings	1954	1250
21m N	Railway Sidings	1954	2500
28m SE	Railway Sidings	1936	2500
38m SE	Railway Sidings	1900	2500
45m NE	Railway Sidings	1954	1250
50m N	Railway Sidings	1954	2500
53m N	Railway Sidings	1954	1250
59m NW	Railway	1915	-
67m NW	Railway Sidings	1954	1250
68m N	Railway Sidings	1954	2500
74m N	Railway Sidings	1971	1250
81m N	Railway Sidings	1954	1250
90m N	Railway Sidings	1954	1250
92m N	Railway Sidings	1880	2500
94m SE	Railway Sidings	1900	2500
94m SE	Railway Sidings	1920	2500
98m NE	Railway Sidings	1954	1250
102m NE	Railway Sidings	1972	1250
126m NW	Railway Sidings	1971	1250
126m NW	Railway Sidings	1954	1250
131m W	Railway Sidings	1900	2500
141m W	Railway Sidings	1990	1250
146m N	Railway Sidings	1999	1250
165m N	Railway Sidings	1990	1250
192m N	Railway Sidings	1954	2500
193m N	Railway Sidings	1954	1250
193m N	Railway Sidings	1972	1250
210m E	Railway Sidings	1900	2500



Location	Land Use	Year of mapping	Mapping scale
210m E	Railway Sidings	1920	2500
215m N	Railway Sidings	1990	1250

This data is sourced from Ordnance Survey/Groundsure.

21.5 Royal Mail tunnels

Records within 250m

0

The Post Office Railway, otherwise known as the Mail Rail, is an underground railway running through Central London from Paddington Head District Sorting Office to Whitechapel Eastern Head Sorting Office. The line is 10.5km long. The data includes details of the full extent of the tunnels, the depth of the tunnel, and the depth to track level.

This data is sourced from Groundsure/the Postal Museum.

21.6 Historical railways

Records within 250m

3

Former railway lines, including dismantled lines, abandoned lines, disused lines, historic railways and razed lines.

Features are displayed on the Railway infrastructure and projects map on **page 128**

Location	Description
31m SE	Abandoned
31m SE	Abandoned
157m N	Abandoned

This data is sourced from OpenStreetMap.

21.7 Railways

Records within 250m

53

Currently existing railway lines, including standard railways, narrow gauge, funicular, trams and light railways.

Features are displayed on the Railway infrastructure and projects map on **page 128**

Location	Name	Type
2m NW	Not given	Single Track



Location	Name	Type
6m NW	Not given	Preserved
8m N	Not given	Preserved
25m NW	Not given	Preserved
96m NW	Not given	Preserved
100m NW	Not given	Preserved
100m NW	Not given	Single Track
101m NW	Not given	Preserved
101m NW	Not given	Preserved
101m NW	Not given	Single Track
103m NW	Not given	Single Track
103m W	Not given	Single Track
105m NW	Not given	Preserved
108m W	Not given	Preserved
108m W	Not given	Preserved
109m NW	Not given	Preserved
112m W	Not given	Single Track
112m NW	Vale of Glamorgan Line	rail
114m NW	Not given	Multi Track
114m NW	Not given	Multi Track
115m NW	Not given	Multi Track
117m NW	Vale of Glamorgan Line	rail
118m W	Not given	Preserved
123m W	Not given	Single Track
125m W	Not given	Single Track
126m W	Not given	Preserved
133m NW	Not given	Multi Track
134m W	Not given	Single Track
136m W	Not given	Preserved



Location	Name	Type
138m W	Not given	Single Track
139m N	Not given	Preserved
139m N	Not given	Preserved
141m W	-	rail
146m W	Not given	Preserved
147m N	Not given	Preserved
147m N	Not given	Preserved
148m W	Not given	Preserved
149m W	Not given	Preserved
150m W	Not given	Multi Track
150m W	Not given	Single Track
154m W	Not given	Single Track
165m W	Not given	Single Track
166m W	Not given	Preserved
180m SW	Not given	Preserved
192m W	Not given	Single Track
192m N	Not given	Multi Track
197m SW	Not given	Preserved
199m W	-	rail
204m N	Not given	Multi Track
207m N	Not given	Preserved
219m W	Not given	Single Track
244m N	Not given	Multi Track
246m N	Not given	Multi Track

This data is sourced from Ordnance Survey and OpenStreetMap.



21.8 Crossrail 1

Records within 500m

0

The Crossrail railway project links 41 stations over 100 kilometres from Reading and Heathrow in the west, through underground sections in central London, to Shenfield and Abbey Wood in the east.

This data is sourced from publicly available information by Groundsure.

21.9 Crossrail 2

Records within 500m

0

Crossrail 2 is a proposed railway linking the national rail networks in Surrey and Hertfordshire via an underground tunnel through London.

This data is sourced from publicly available information by Groundsure.

21.10 HS2

Records within 500m

0

HS2 is a proposed high speed rail network running from London to Manchester and Leeds via Birmingham. Main civils construction on Phase 1 (London to Birmingham) of the project began in 2019, and it is currently anticipated that this phase will be fully operational by 2026. Construction on Phase 2a (Birmingham to Crewe) is anticipated to commence in 2021, with the service fully operational by 2027. Construction on Phase 2b (Crewe to Manchester and Birmingham to Leeds) is scheduled to begin in 2023 and be operational by 2033.

This data is sourced from HS2 Ltd.



Data providers

Groundsure works with respected data providers to bring you the most relevant and accurate information. To find out who they are and their areas of expertise see <https://www.groundsure.com/sources-reference>.

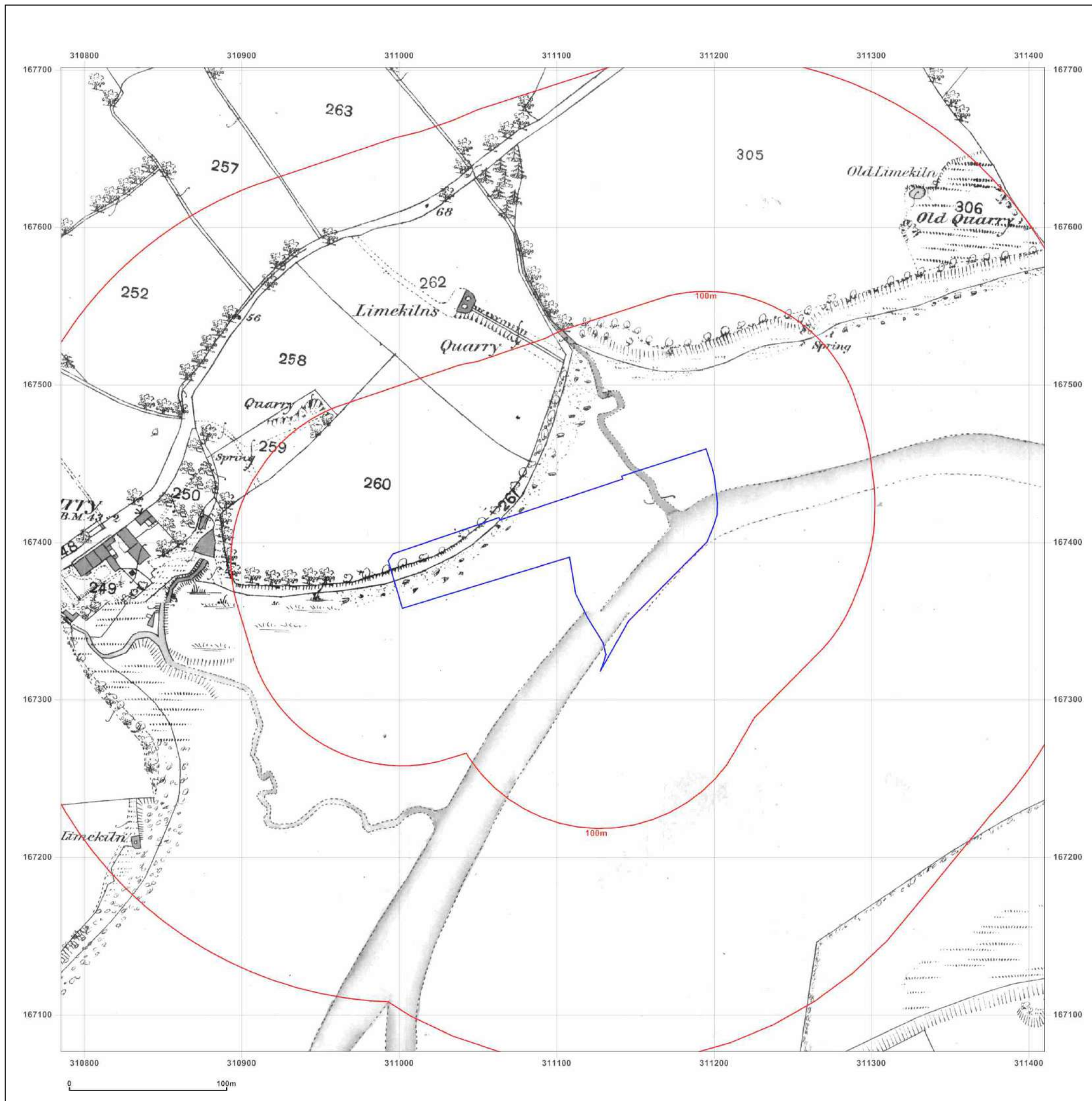
Terms and conditions

Groundsure's Terms and Conditions can be accessed at this link: <https://www.groundsure.com/terms-and-conditions-jan-2020/>.



Appendix III





Site Details:

Barry Waterfront, Barry ,CF62
5QN

Client Ref: EMS_608209_812589
Report Ref: EMS-608209_812589
Grid Ref: 311097, 167389

Map Name: County Series

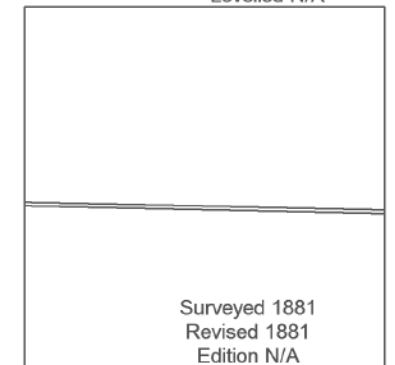
Map date: 1880-1881

Scale: 1:2,500

Printed at: 1:2,500



Surveyed 1880
Revised 1880
Edition N/A
Copyright N/A
Levelled N/A



Surveyed 1881
Revised 1881
Edition N/A
Copyright N/A
Levelled N/A



Produced by
Groundsure Insights
www.groundsure.com



Supplied by:
www.emapsite.com
sales@emapsite.com

© Crown copyright and database rights 2019 Ordnance Survey 100035207

Production date: 05 May 2020

Map legend available at:
www.groundsure.com/sites/default/files/groundsure_legend.pdf

Site Details:

Barry Waterfront, Barry, CF62 5QN

Client Ref: EMS_608209_812589
Report Ref: EMS-608209_812589
Grid Ref: 311097, 167389

Map Name: County Series

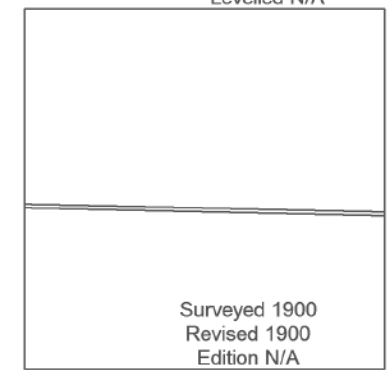
Map date: 1900

Scale: 1:2,500

Printed at: 1:2,500



Surveyed 1900
 Revised 1900
 Edition N/A
 Copyright N/A
 Levelled N/A



Surveyed 1900
 Revised 1900
 Edition N/A
 Copyright N/A
 Levelled N/A



Produced by
 Groundsure Insights
www.groundsure.com

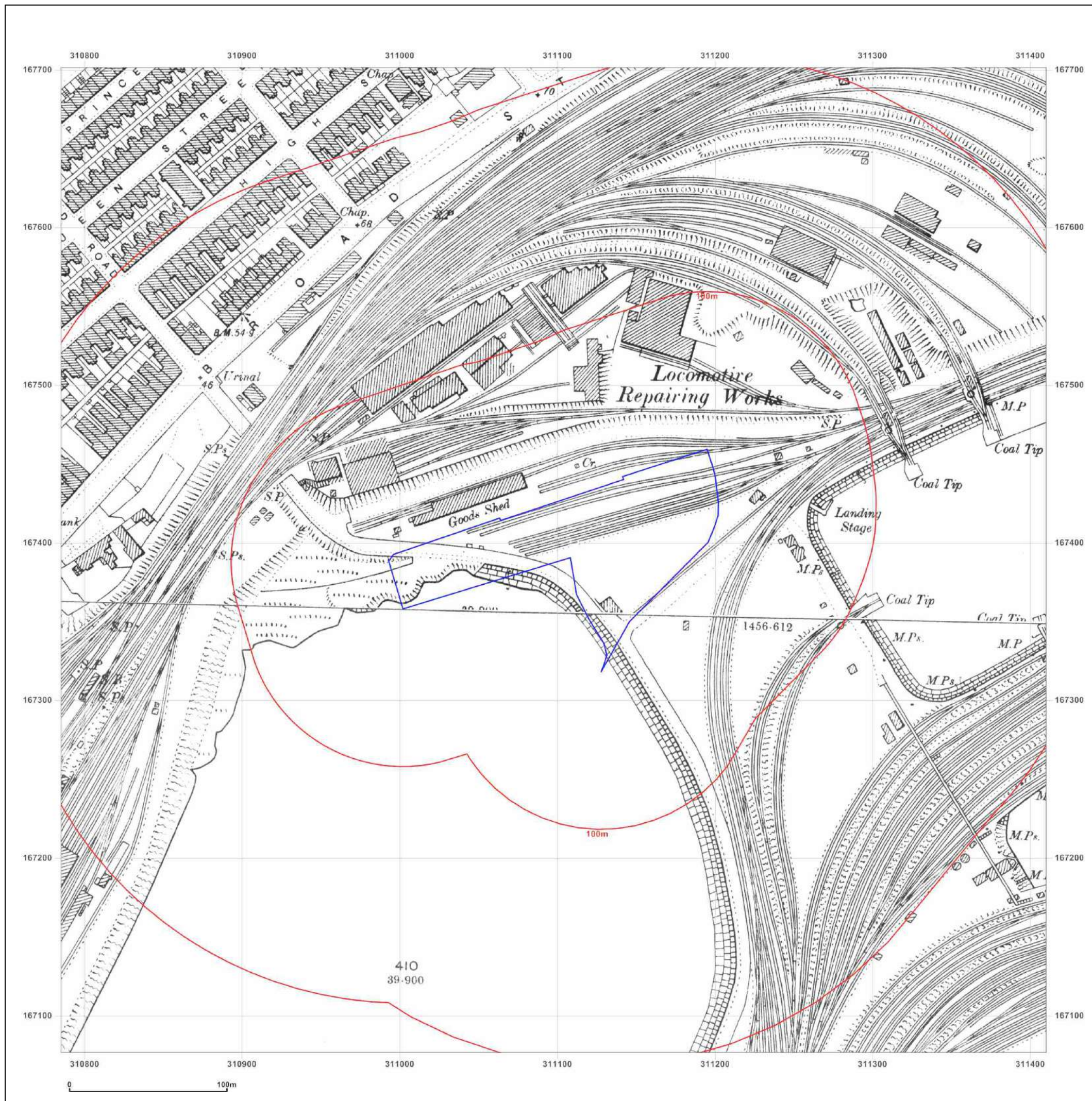


Supplied by:
www.emapsite.com
sales@emapsite.com

© Crown copyright and database rights 2019 Ordnance Survey 100035207

Production date: 05 May 2020

Map legend available at:
www.groundsure.com/sites/default/files/groundsure_legend.pdf



Site Details:

Barry Waterfront, Barry, CF62 5QN

Client Ref: EMS_608209_812589
Report Ref: EMS-608209_812589
Grid Ref: 311097, 167389

Map Name: County Series

Map date: 1920

Scale: 1:2,500

Printed at: 1:2,500



Surveyed 1920
 Revised 1920
 Edition N/A
 Copyright N/A
 Levelled N/A

Surveyed 1920
 Revised 1920
 Edition N/A
 Copyright N/A
 Levelled N/A



Produced by
 Groundsure Insights
www.groundsure.com

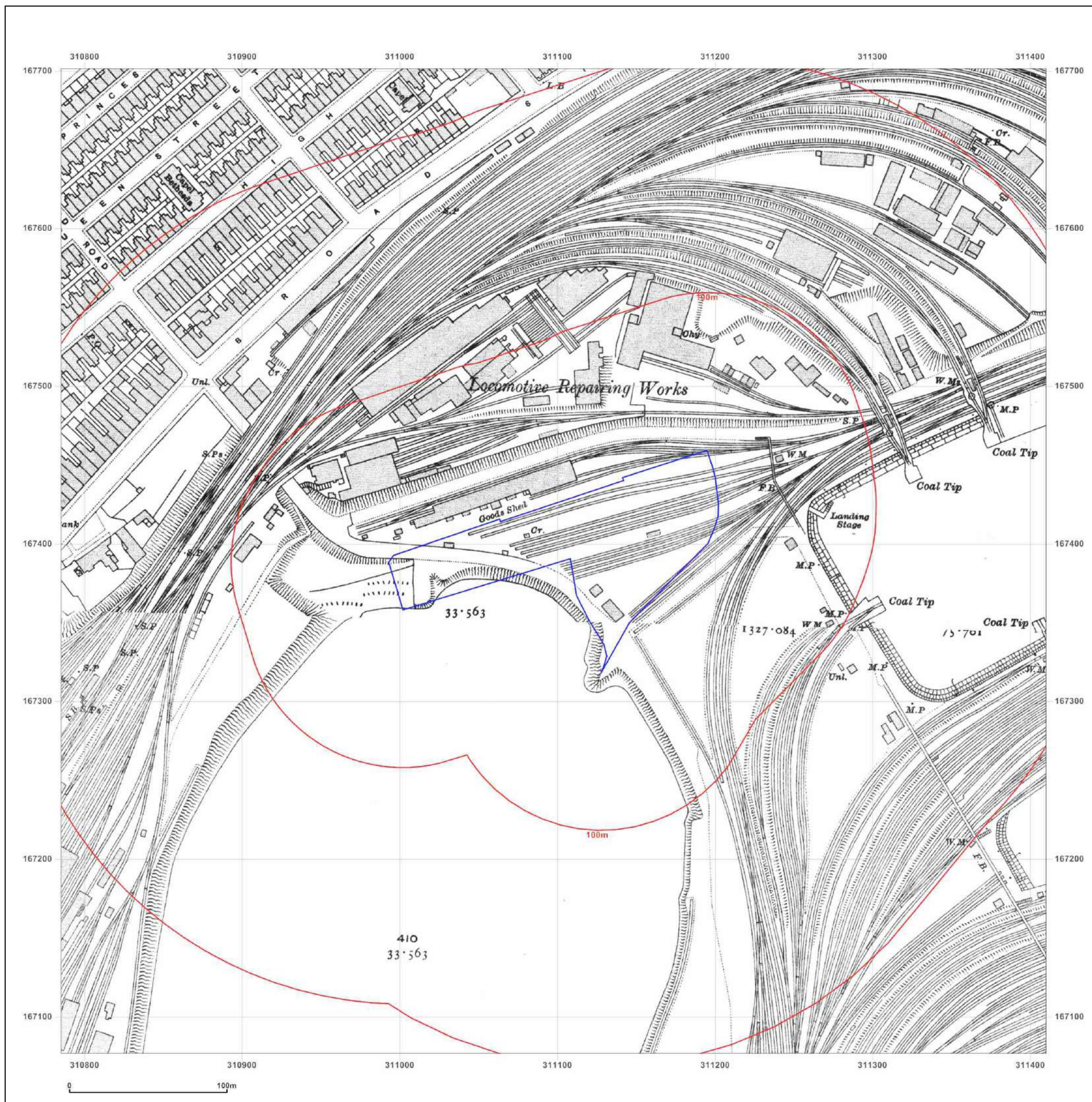


Supplied by:
www.emapsite.com
sales@emapsite.com

© Crown copyright and database rights 2019 Ordnance Survey 100035207

Production date: 05 May 2020

Map legend available at:
www.groundsure.com/sites/default/files/groundsure_legend.pdf



Site Details:

Barry Waterfront, Barry ,CF62
5QN

Client Ref: EMS_608209_812589
Report Ref: EMS-608209_812589
Grid Ref: 311097, 167389

Map Name: County Series

Map date: 1936

Scale: 1:2,500

Printed at: 1:2,500



Surveyed 1936
Revised 1936
Edition N/A
Copyright N/A
Levelled N/A

Surveyed 1936
Revised 1936
Edition N/A
Copyright N/A
Levelled N/A



Produced by
Groundsure Insights
www.groundsure.com

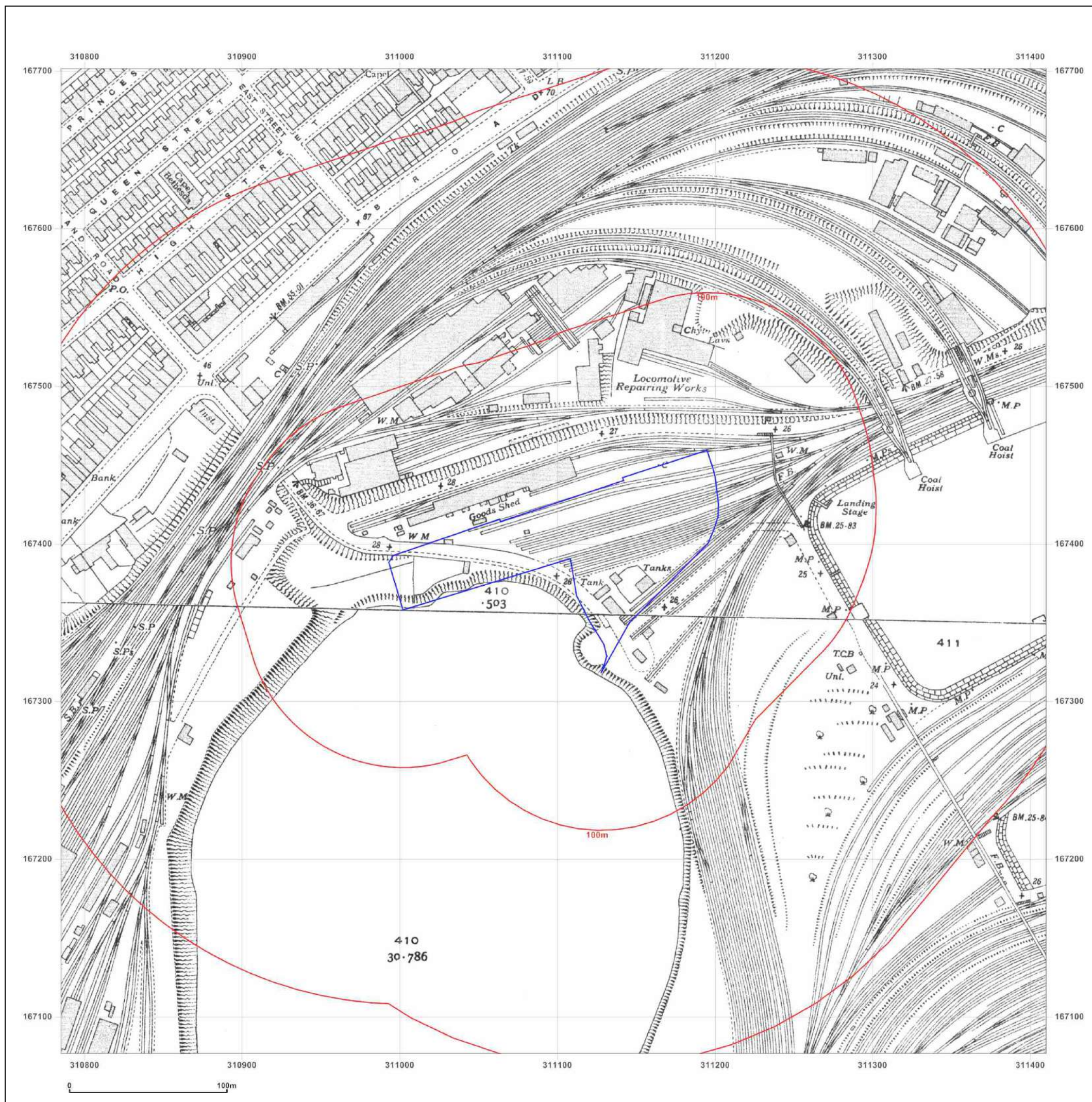


Supplied by:
www.emapsite.com
sales@emapsite.com

© Crown copyright and database rights 2019 Ordnance Survey 100035207

Production date: 05 May 2020

Map legend available at:
www.groundsure.com/sites/default/files/groundsure_legend.pdf



Site Details:

Barry Waterfront, Barry ,CF62
5QN

Client Ref: EMS_608209_812589
Report Ref: EMS-608209_812589
Grid Ref: 311097, 167389

Map Name: National Grid

Map date: 1954

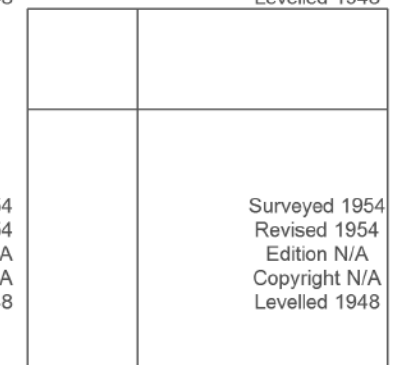
Scale: 1:1,250

Printed at: 1:2,000



Surveyed 1954
Revised 1954
Edition N/A
Copyright N/A
Levelled 1948

Surveyed 1954
Revised 1954
Edition N/A
Copyright N/A
Levelled 1948



Surveyed 1954
Revised 1954
Edition N/A
Copyright N/A
Levelled 1948

Surveyed 1954
Revised 1954
Edition N/A
Copyright N/A
Levelled 1948



Produced by
Groundsure Insights
www.groundsure.com

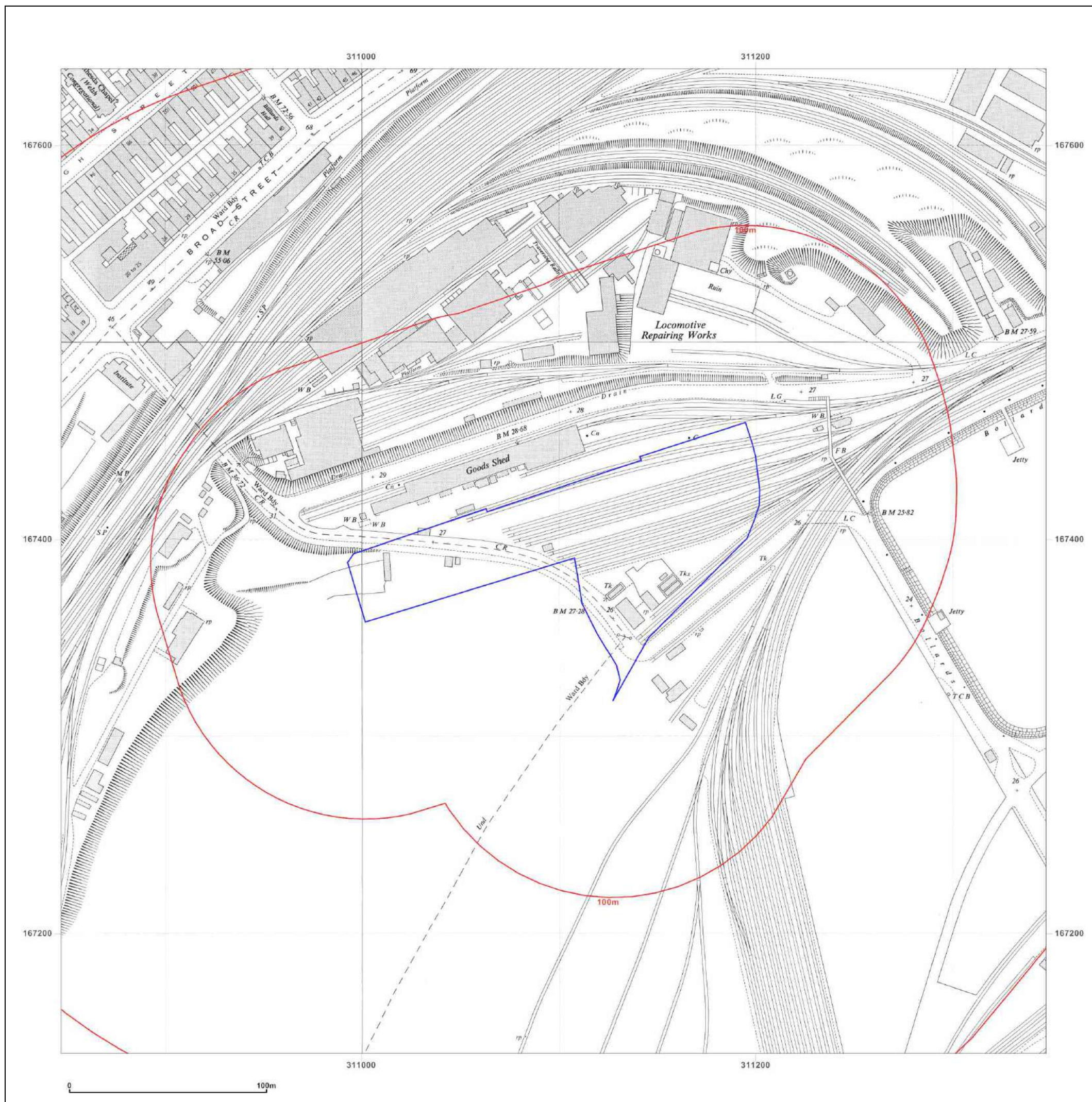


Supplied by:
www.emapsite.com
sales@emapsite.com

© Crown copyright and database rights 2019 Ordnance Survey 100035207

Production date: 05 May 2020

Map legend available at:
www.groundsure.com/sites/default/files/groundsure_legend.pdf



Site Details:

Barry Waterfront, Barry ,CF62
5QN

Client Ref: EMS_608209_812589
Report Ref: EMS-608209_812589
Grid Ref: 311097, 167389

Map Name: National Grid

Map date: 1955

Scale: 1:1,250

Printed at: 1:2,000



Surveyed N/A
Revised N/A
Edition N/A
Copyright N/A
Levelled N/A

Surveyed N/A
Revised N/A
Edition N/A
Copyright N/A
Levelled N/A

Surveyed N/A
Revised N/A
Edition N/A
Copyright N/A
Levelled N/A

Surveyed N/A
Revised N/A
Edition N/A
Copyright N/A
Levelled N/A



Produced by
Groundsure Insights
www.groundsure.com

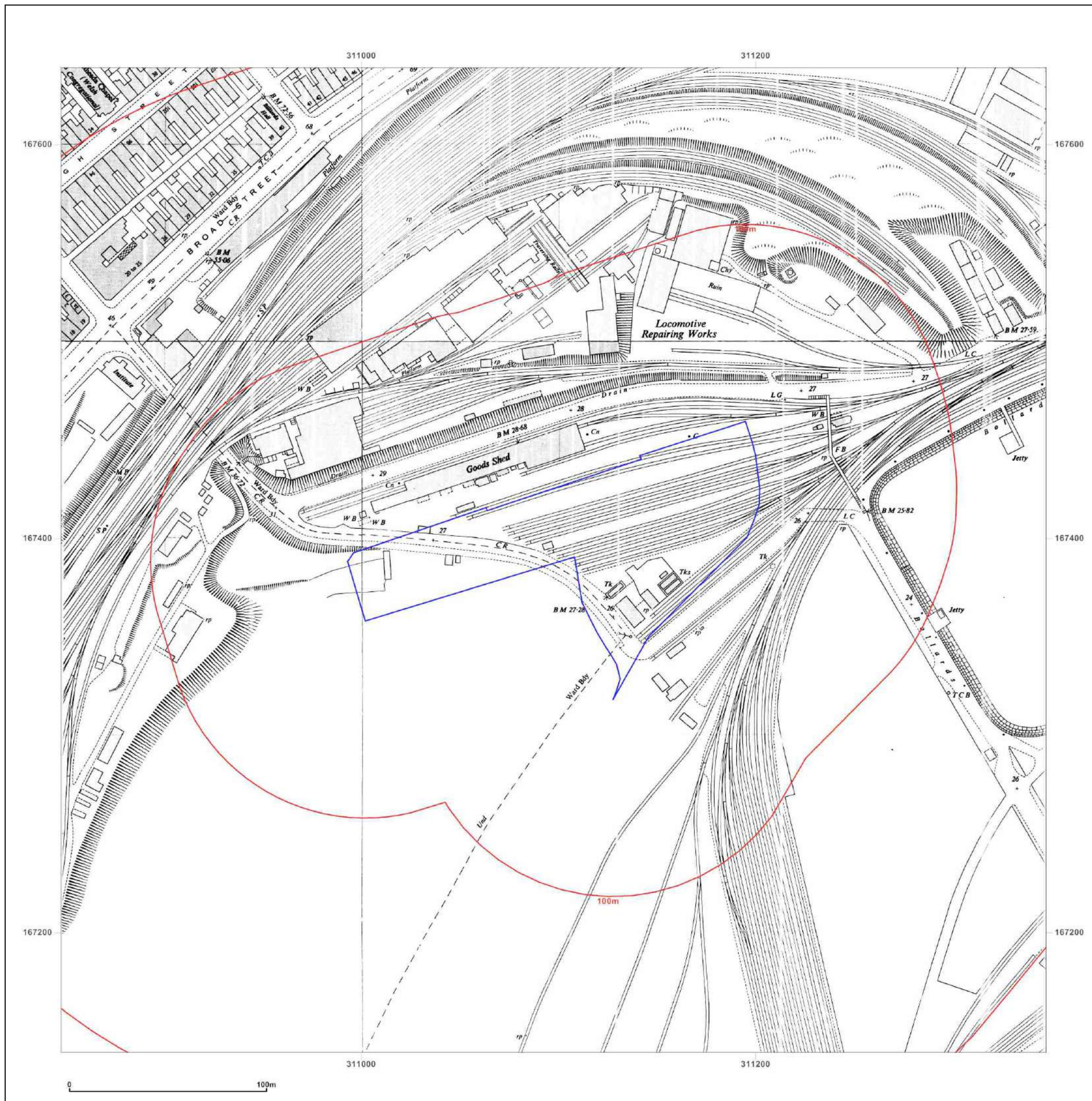


Supplied by:
www.emapsite.com
sales@emapsite.com

© Crown copyright and database rights 2019 Ordnance Survey 100035207

Production date: 05 May 2020

Map legend available at:
www.groundsure.com/sites/default/files/groundsure_legend.pdf



Site Details:

Barry Waterfront, Barry ,CF62
5QN

Client Ref: EMS_608209_812589
Report Ref: EMS-608209_812589
Grid Ref: 311097, 167389

Map Name: National Grid

Map date: 1954-1956

Scale: 1:2,500

Printed at: 1:2,500



Surveyed N/A
Revised N/A
Edition N/A
Copyright N/A
Levelled N/A

Surveyed 1954
Revised 1954
Edition 1956
Copyright N/A
Levelled 1948



Produced by
Groundsure Insights
www.groundsure.com

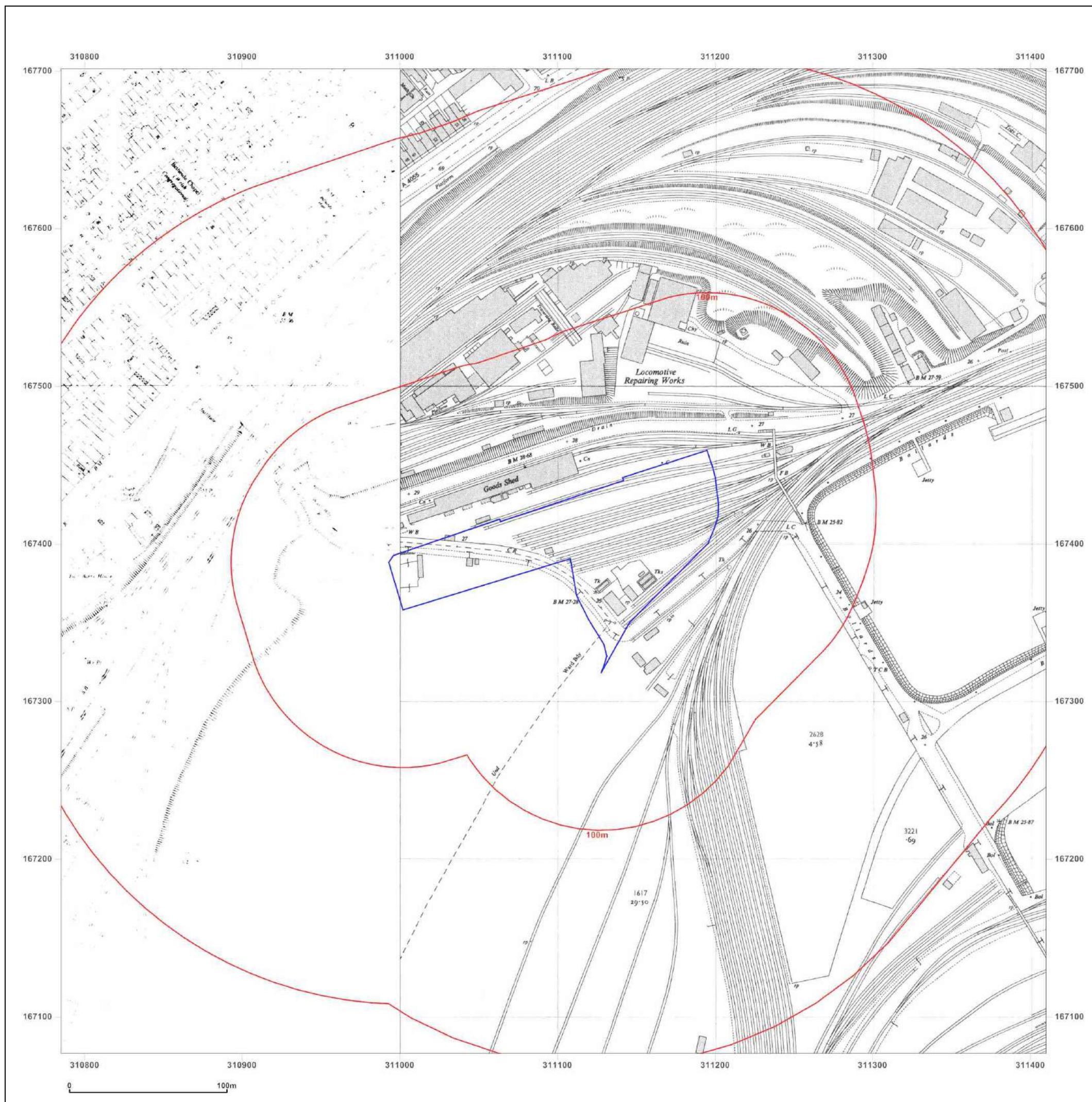


Supplied by:
www.emapsite.com
sales@emapsite.com

© Crown copyright and database rights 2019 Ordnance Survey 100035207

Production date: 05 May 2020

Map legend available at:
www.groundsure.com/sites/default/files/groundsure_legend.pdf



Site Details:

Barry Waterfront, Barry ,CF62
5QN

Client Ref: EMS_608209_812589
Report Ref: EMS-608209_812589
Grid Ref: 311097, 167389

Map Name: National Grid

Map date: 1956

Scale: 1:2,500

Printed at: 1:2,500



Surveyed N/A
Revised N/A
Edition N/A
Copyright N/A
Levelled N/A

Surveyed N/A
Revised N/A
Edition N/A
Copyright N/A
Levelled N/A



Produced by
Groundsure Insights
www.groundsure.com

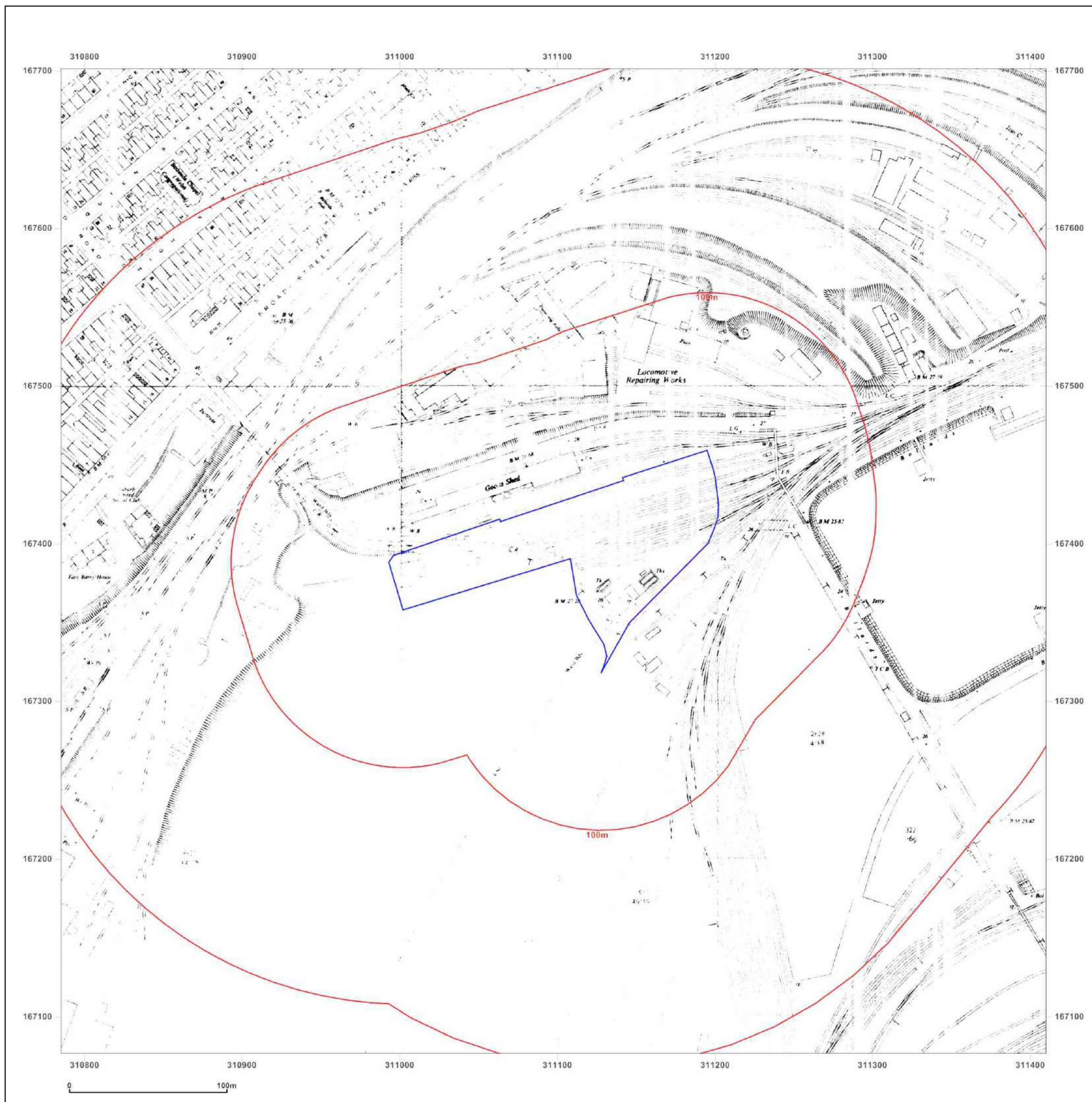


Supplied by:
www.emapsite.com
sales@emapsite.com

© Crown copyright and database rights 2019 Ordnance Survey 100035207

Production date: 05 May 2020

Map legend available at:
www.groundsure.com/sites/default/files/groundsure_legend.pdf



Site Details:

Barry Waterfront, Barry, CF62
5QN

Client Ref: EMS_608209_812589
Report Ref: EMS-608209_812589
Grid Ref: 311097, 167389

Map Name: National Grid

Map date: 1954-1956

Scale: 1:2,500

Printed at: 1:2,500



Surveyed 1954
Revised 1954
Edition 1956
Copyright N/A
Levelled 1948

Surveyed N/A
Revised N/A
Edition N/A
Copyright N/A
Levelled N/A



Produced by
Groundsure Insights
www.groundsure.com

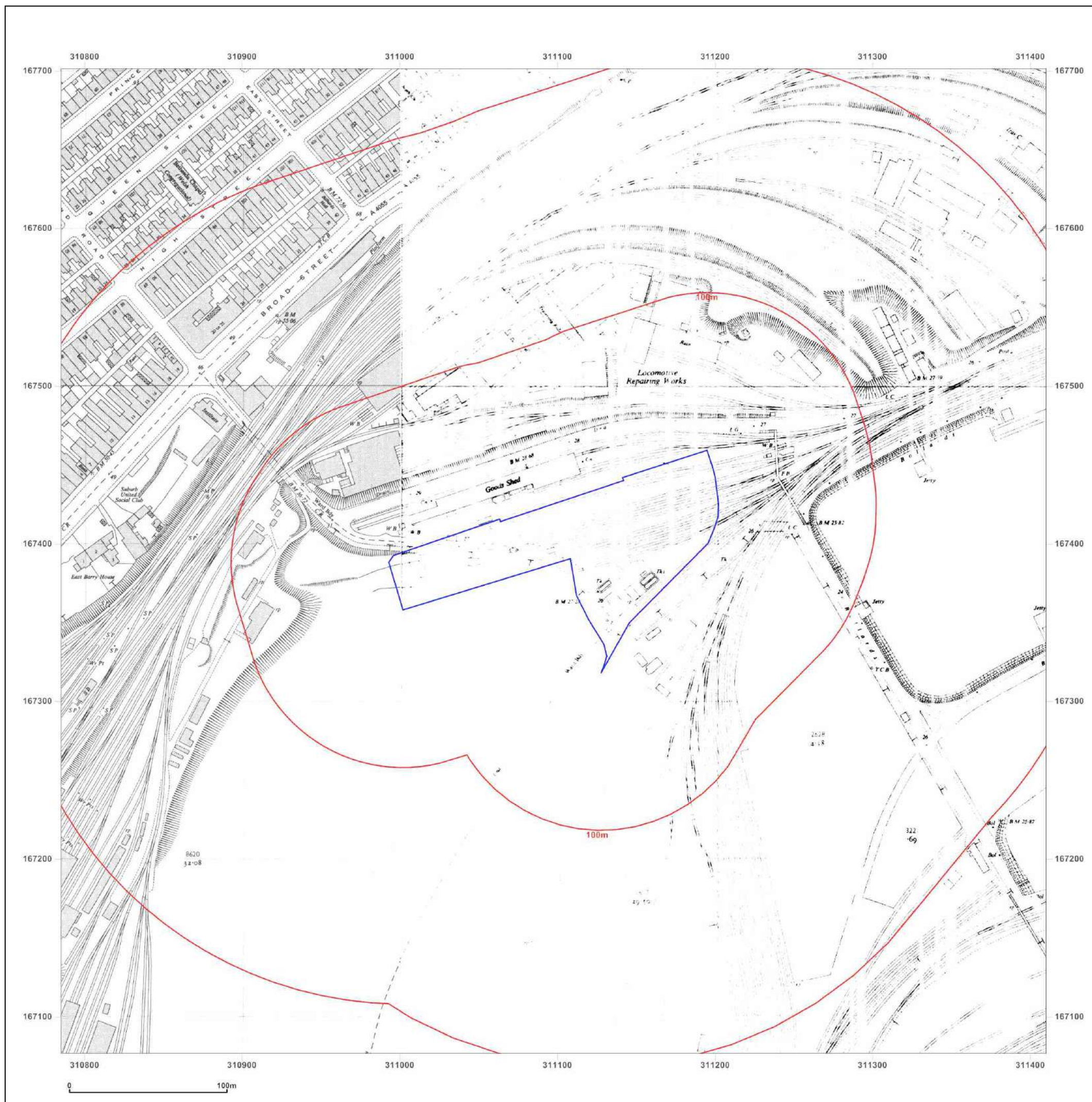


Supplied by:
www.emapsite.com
sales@emapsite.com

© Crown copyright and database rights 2019 Ordnance Survey 100035207

Production date: 05 May 2020

Map legend available at:
www.groundsure.com/sites/default/files/groundsure_legend.pdf



Site Details:

Barry Waterfront, Barry, CF62 5QN

Client Ref: EMS_608209_812589
Report Ref: EMS-608209_812589
Grid Ref: 311097, 167389

Map Name: National Grid

Map date: 1971-1972

Scale: 1:1,250

Printed at: 1:2,000



Surveyed 1954
 Revised 1970
 Edition N/A
 Copyright 1971
 Levelled 1961

Surveyed 1954
 Revised 1971
 Edition N/A
 Copyright 1972
 Levelled 1961

Surveyed 1954
 Revised 1970
 Edition N/A
 Copyright 1971
 Levelled 1961

Surveyed 1954
 Revised 1971
 Edition N/A
 Copyright N/A
 Levelled 1961



Produced by
 Groundsure Insights
www.groundsure.com

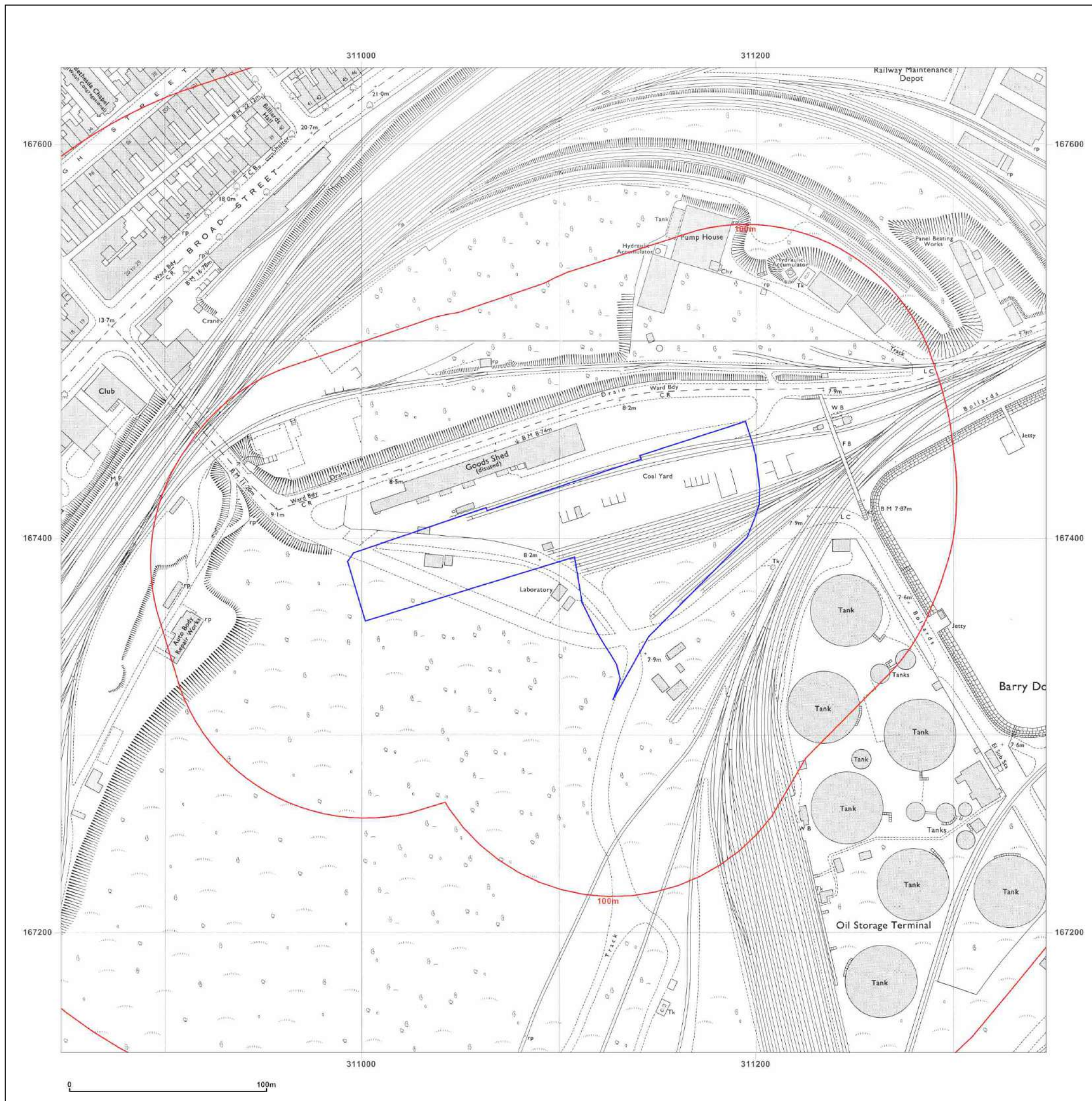


Supplied by:
www.emapsite.com
sales@emapsite.com

© Crown copyright and database rights 2019 Ordnance Survey 100035207

Production date: 05 May 2020

Map legend available at:
www.groundsure.com/sites/default/files/groundsure_legend.pdf



Site Details:

Barry Waterfront, Barry, CF62 5QN

Client Ref: EMS_608209_812589
Report Ref: EMS-608209_812589
Grid Ref: 311097, 167389

Map Name: National Grid

Map date: 1972-1973

Scale: 1:1,250

Printed at: 1:2,000



Surveyed N/A
 Revised N/A
 Edition N/A
 Copyright N/A
 Levelled N/A

Surveyed N/A
 Revised N/A
 Edition N/A
 Copyright N/A
 Levelled N/A

Surveyed N/A
 Revised N/A
 Edition N/A
 Copyright N/A
 Levelled N/A



Produced by
 Groundsure Insights
www.groundsure.com

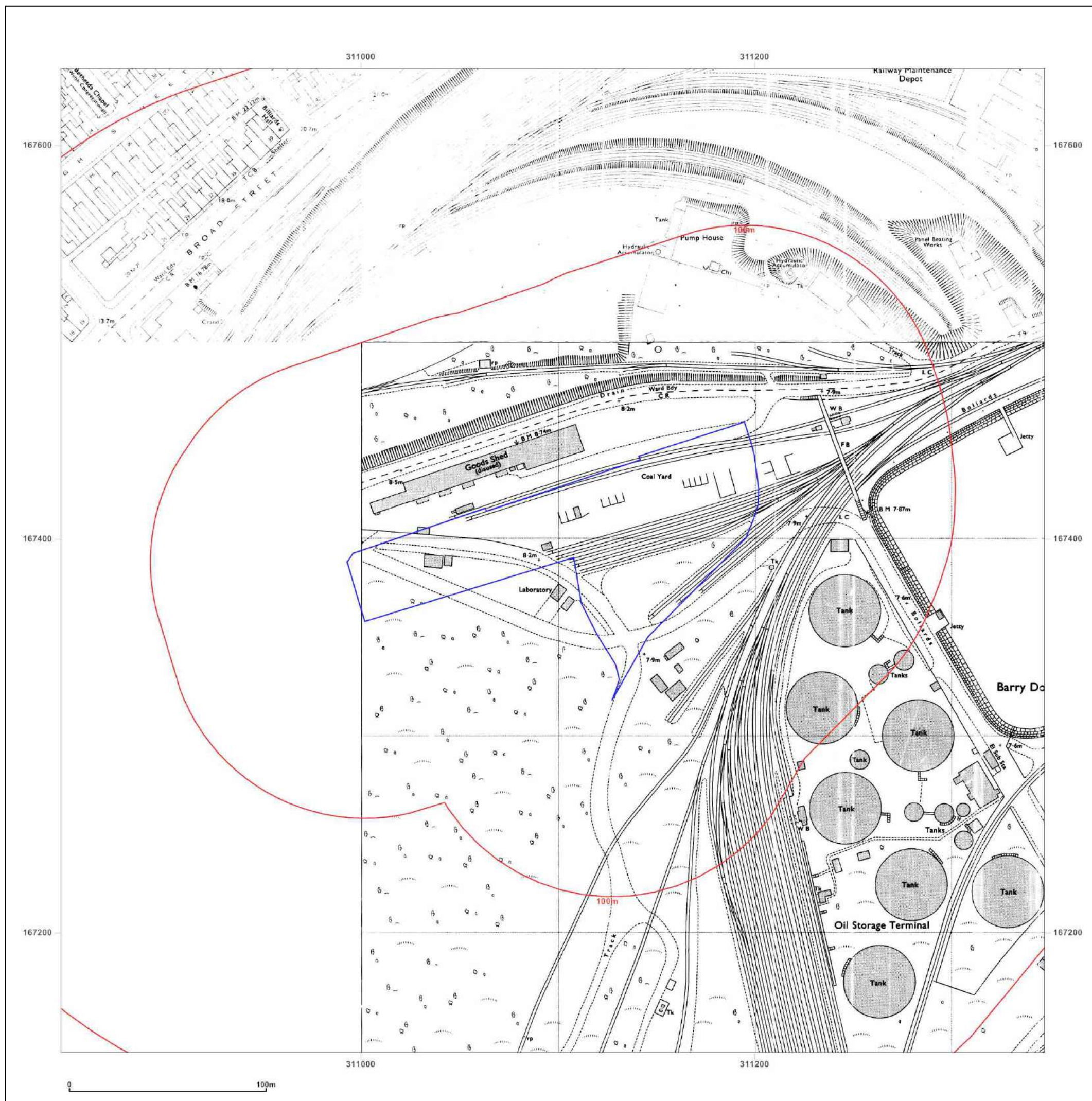


Supplied by:
www.emapsite.com
sales@emapsite.com

© Crown copyright and database rights 2019 Ordnance Survey 100035207

Production date: 05 May 2020

Map legend available at:
www.groundsure.com/sites/default/files/groundsure_legend.pdf



Site Details:

Barry Waterfront, Barry, CF62
5QN

Client Ref: EMS_608209_812589
Report Ref: EMS-608209_812589
Grid Ref: 311097, 167389

Map Name: National Grid

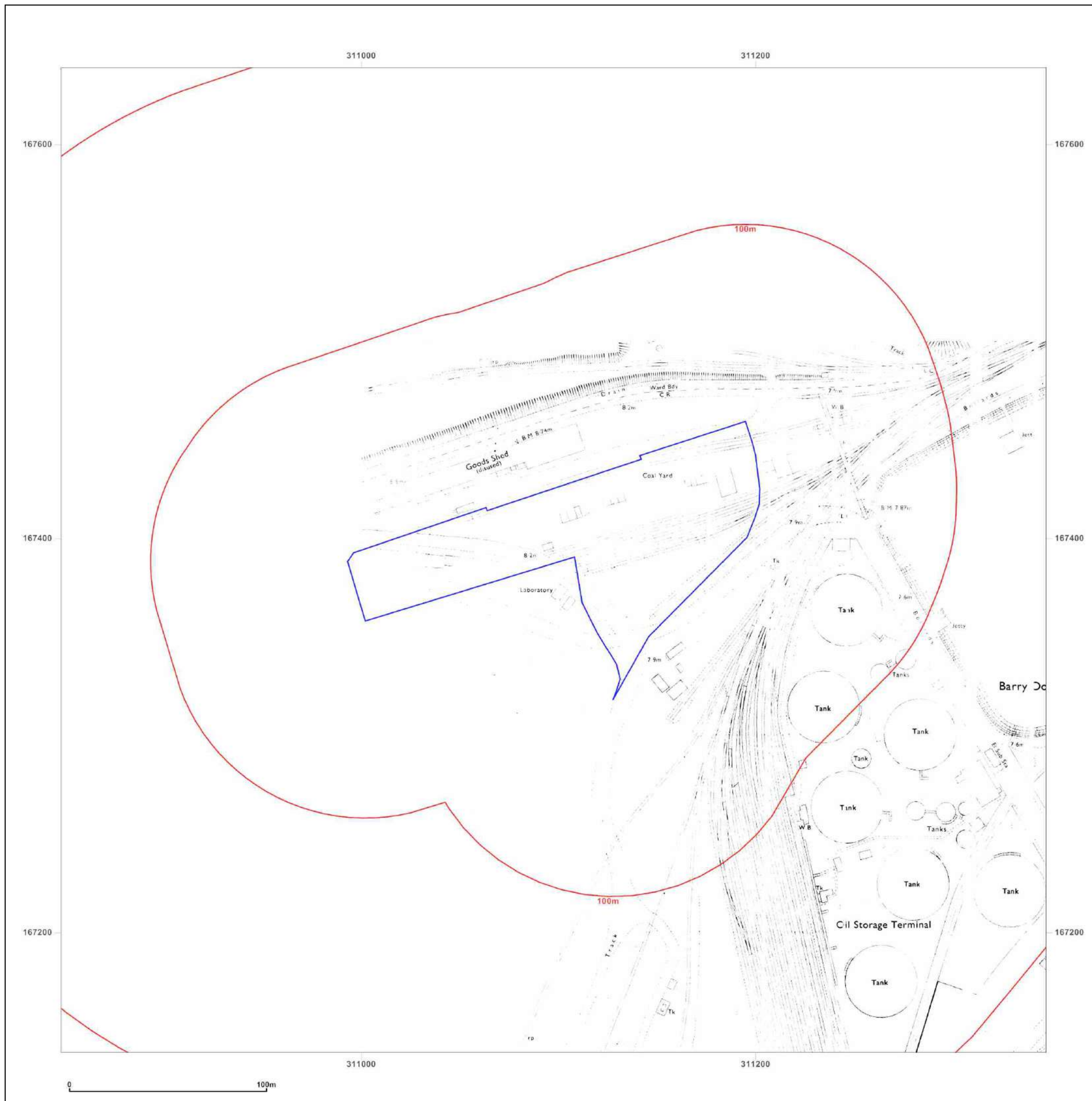
Map date: 1973

Scale: 1:1,250

Printed at: 1:2,000



Surveyed N/A
Revised N/A
Edition N/A
Copyright N/A
Levelled N/A



Produced by
Groundsure Insights
www.groundsure.com



Supplied by:
www.emapsite.com
sales@emapsite.com

© Crown copyright and database rights 2019 Ordnance Survey 100035207

Production date: 05 May 2020

Map legend available at:
www.groundsure.com/sites/default/files/groundsure_legend.pdf

Site Details:

Barry Waterfront, Barry, CF62 5QN

Client Ref: EMS_608209_812589
Report Ref: EMS-608209_812589
Grid Ref: 311097, 167389

Map Name: National Grid

Map date: 1990

Scale: 1:1,250

Printed at: 1:2,000



Surveyed 1961
 Revised 1990
 Edition N/A
 Copyright 1990
 Levelled 1961

Surveyed 1961
 Revised 1990
 Edition N/A
 Copyright 1990
 Levelled 1961

Surveyed 1961
 Revised 1990
 Edition N/A
 Copyright 1990
 Levelled 1961

Surveyed 1961
 Revised 1990
 Edition N/A
 Copyright 1990
 Levelled 1961



Produced by
 Groundsure Insights
www.groundsure.com



Supplied by:
www.emapsite.com
sales@emapsite.com

© Crown copyright and database rights 2019 Ordnance Survey 100035207

Production date: 05 May 2020

Map legend available at:
www.groundsure.com/sites/default/files/groundsure_legend.pdf

