

Indicative only

Tree Work Schedule			
No.	Species	Works	Category
T07	Common Ash	Fell to ground level, remove stump	U
T08	Field Maple	Fell to ground level, remove stump	C1
T09	Silver Birch	Fell to ground level, remove stump	C12
T10	Silver Birch	Fell to ground level, remove stump	B12
T11	Silver Birch	Fell to ground level, remove stump	C12
T12	Silver Birch	Fell to ground level, remove stump	C12
T13	Silver Birch	Fell to ground level, remove stump	C12
T14	Field Maple	Fell to ground level, remove stump	C12
T15	Goat Willow	Fell to ground level, remove stump	C12
T16	Silver Birch	Fell to ground level, remove stump	C12
T17	Silver Birch	Fell to ground level, remove stump	C12
T18	Silver Birch	Fell to ground level, remove stump	C12
T19	Silver Birch	Fell to ground level, remove stump	C12
T20	Silver Birch	Fell to ground level, remove stump	C12
T21	Silver Birch	Fell to ground level, remove stump	C12
T22	Silver Birch	Fell to ground level, remove stump	C12
T23	Silver Birch	Fell to ground level, remove stump	C12
T24	Field Maple	Fell to ground level, remove stump	C1
T25	Silver Birch	Fell to ground level, remove stump	C12
T26	Silver Birch	Fell to ground level, remove stump	C12
T27	Silver Birch	Fell to ground level, remove stump	C12
T28	Silver Birch	Fell to ground level, remove stump	U
T29	Silver Birch	Fell to ground level, remove stump	C12
T30	Silver Birch	Fell to ground level, remove stump	C12
T31	Field Maple	Fell to ground level, remove stump	B12
T32	Silver Birch	Fell to ground level, remove stump	C12
T33	Silver Birch	Fell to ground level, remove stump	C12
T34	Silver Birch	Fell to ground level, remove stump	C12
T35	Silver Birch	Fell to ground level, remove stump	C12
T36	Silver Birch	Fell to ground level, remove stump	C12
T37	Silver Birch	Fell to ground level, remove stump	C12
G01	Various	Partial fell area as shown on the AIA plan.	B12
G02	Various	Partial fell area as shown on the AIA plan.	B12
G03	Various	Partial fell area as shown on the AIA plan.	C12
G04	Various	Partial fell area as shown on the AIA plan.	B12

All tree work is to be undertaken in accordance with British Standard BS 5869:2010 Tree work - Recommendations. All arising's are to be removed and the site is to be left as found. Care is to be taken of the ground and retained trees to make sure that it does not become compacted as a result of tree surgery operations. No equipment or vehicles such as limbers, lorries, tractors, excavators or cranes shall be parked or driven beneath the crowns of any retained trees, to prevent subsequent compaction and root death.

Protective Fencing
To be erected prior to the commencement of all works on site, and removed in place throughout construction.
Default specification: To comprise either 2.4m wooden site hoarding, or 2.2m high scaffolding framework comprising of vertical and horizontal framework, well braced to resist impacts, with uprights to be spaced at a maximum of 3.0m intervals and driven into the ground by a minimum of 600mm. On to this, standard anti-climb welded mesh panels are to be securely fixed to each other with at least two scaffold clamps and to the scaffold framework with wire.
Secondary Specification: To comprise of 2m tall welded mesh panels on tubular or concrete feet. Panels are to be joined together using a minimum of two anti-lamper couplers, installed so that they can only be removed from inside the fence. The panels should be supported on the inner side by stabilizer struts, which should be attached to a base plate and secured with ground pins.
All weather notices should be erected at regular intervals on the welded mesh panels with words such as "Construction exclusion zone - Keep out".

Tree Protection Area
KEEP OUT
Do not move this fence

DOWN & COUNTRY PLANNING ACT 1990
TREES ENCLOSED BY THIS FENCE ARE PROTECTED BY PLANNING CONDITIONS AND/OR ARE THE SUBJECT OF A TREE PRESERVATION ORDER AND CONSTRUCTION OF A TREE PRESERVATION ORDER HAS LEAD TO SEVERAL PROSECUTIONS
ANY INTERFERENCE WITH THE PROTECTED AREA MUST BE WITH THE WRITTEN PERMISSION OF THE LOCAL PLANNING AUTHORITY

Construction exclusion zone
A construction exclusion zone (CEZ) is a designated area where there is to be no construction activity whatsoever. Access to the site for construction personnel or machinery is strictly prohibited and there is no scope for materials or waste storage etc.

Arboricultural Supervision
The arboricultural consultant will be required to attend site to directly supervise all demolition and construction work that have to be undertaken within the tree protection area. This will include:
1. Pre-commencement site meeting
2. Location of protective measures.
3. Any demolition and/or excavations within or adjacent to BPAs, including foundations, hard surfacing or underground services
4. Arboriculture signs of and removal of protective measures.

Arboricultural Method Statement
Please refer to Arbttech Consulting Ltd Tree Schedule and Arboricultural Method Statement, for full details on all surveyed trees and how all aspects of the development might be implemented without detriment to retained trees.

Rev.	Date	Notes
A	05/04/24	Updated with latest layout



Project: Cardiff and Vale College, Advanced Technology Centre, Land off Port Road, Vale of Glamorgan, CF62 3BD

Client: WEPCo

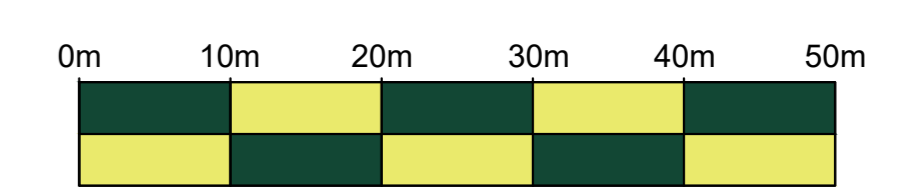
Drawing: Tree Protection Plan

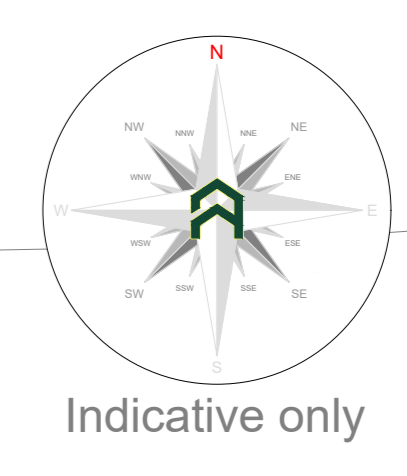
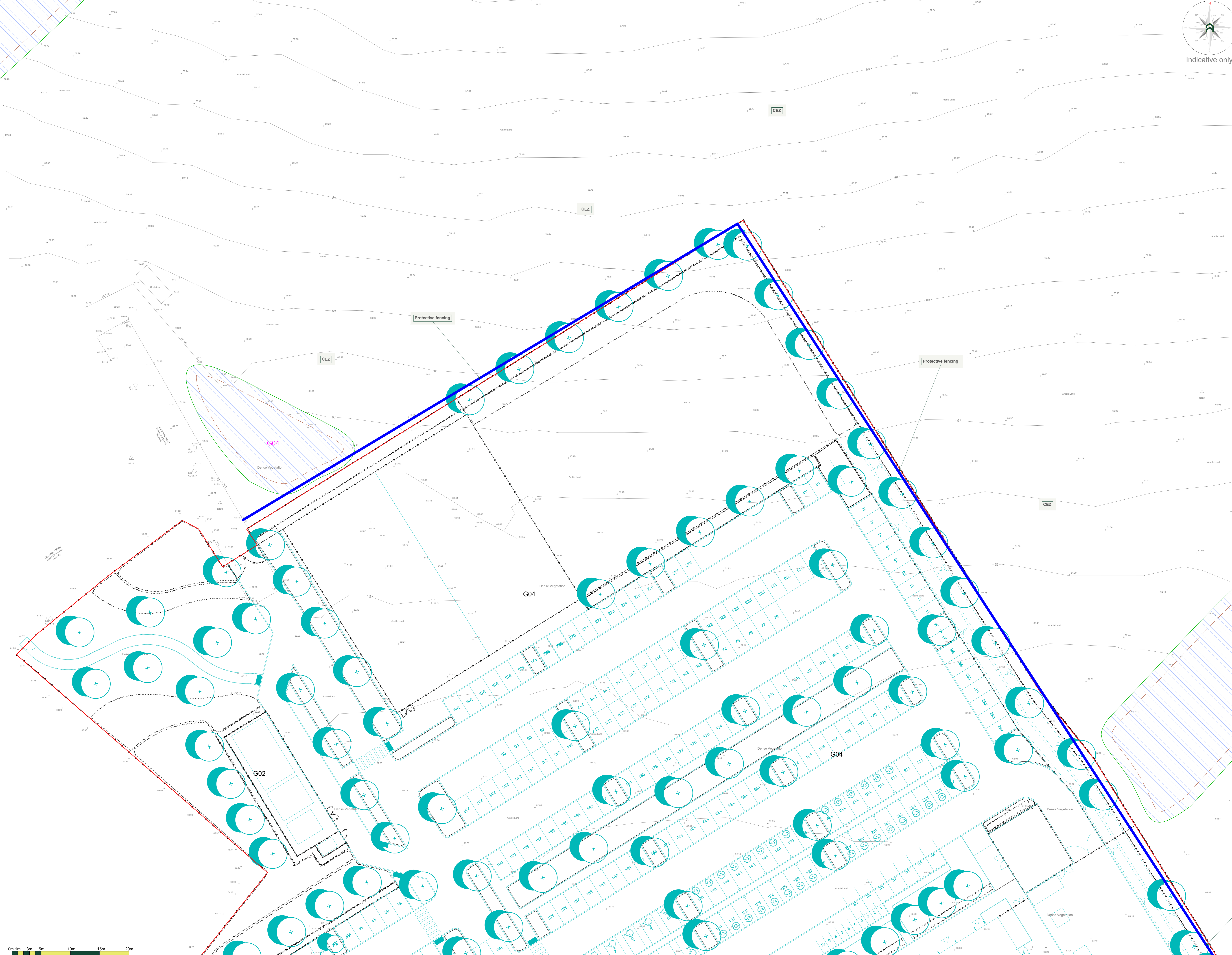
Based on: VG0101-ALA-00-XX-DR-L-00002 Rev P08 Landscape General Arrangement

Drawing No: Arbttech TPP 01 (Overview) **Rev:** A

Date: Jan 2024 **Scale:** 1:500 @ A0 **Drawn:** EK

Tree No.	Tree Category	Trunk
T01	Category 'A' trees	Red circle
	Category 'B' trees	Blue circle
	Category 'C' trees	Green circle
	Category 'D' trees	Yellow circle
	Category 'E' trees	Purple circle
	Category 'F' trees	Orange circle
	Category 'G' trees	Light blue circle
	Category 'H' trees	Light green circle
	Category 'I' trees	Light purple circle
	Category 'J' trees	Light orange circle
	Category 'K' trees	Light yellow circle
	Category 'L' trees	Light pink circle
	Category 'M' trees	Light blue circle
	Category 'N' trees	Light green circle
	Category 'O' trees	Light purple circle
	Category 'P' trees	Light orange circle
	Category 'Q' trees	Light yellow circle
	Category 'R' trees	Light pink circle
	Category 'S' trees	Light blue circle
	Category 'T' trees	Light green circle
	Category 'U' trees	Light purple circle
	Category 'V' trees	Light orange circle
	Category 'W' trees	Light yellow circle
	Category 'X' trees	Light pink circle
	Category 'Y' trees	Light blue circle
	Category 'Z' trees	Light green circle





Tree Work Schedule

No.	Species	Works	Category
T07	Common Ash	Fell to ground level, remove stump	U
T08	Field Maple	Fell to ground level, remove stump	C1
T09	Silver Birch	Fell to ground level, remove stump	C12
T10	Silver Birch	Fell to ground level, remove stump	B12
T11	Silver Birch	Fell to ground level, remove stump	C12
T12	Silver Birch	Fell to ground level, remove stump	C12
T13	Silver Birch	Fell to ground level, remove stump	C12
T14	Field Maple	Fell to ground level, remove stump	C12
T15	Goat Willow	Fell to ground level, remove stump	C12
T16	Silver Birch	Fell to ground level, remove stump	C12
T17	Silver Birch	Fell to ground level, remove stump	C12
T18	Silver Birch	Fell to ground level, remove stump	C12
T19	Silver Birch	Fell to ground level, remove stump	C12
T20	Silver Birch	Fell to ground level, remove stump	C12
T21	Silver Birch	Fell to ground level, remove stump	C12
T22	Silver Birch	Fell to ground level, remove stump	C12
T23	Silver Birch	Fell to ground level, remove stump	C12
T24	Field Maple	Fell to ground level, remove stump	C1
T25	Silver Birch	Fell to ground level, remove stump	C12
T26	Silver Birch	Fell to ground level, remove stump	C12
T27	Silver Birch	Fell to ground level, remove stump	C12
T28	Silver Birch	Fell to ground level, remove stump	U
T29	Silver Birch	Fell to ground level, remove stump	C12
T30	Silver Birch	Fell to ground level, remove stump	C12
T31	Field Maple	Fell to ground level, remove stump	B12
T32	Silver Birch	Fell to ground level, remove stump	C12
T33	Silver Birch	Fell to ground level, remove stump	C12
T34	Silver Birch	Fell to ground level, remove stump	C12
T35	Silver Birch	Fell to ground level, remove stump	C12
T36	Silver Birch	Fell to ground level, remove stump	C12
T37	Silver Birch	Fell to ground level, remove stump	C12
G01	Various	Partial fell area as shown on the AIA plan.	B12
G02	Various	Partial fell area as shown on the AIA plan.	B12
G03	Various	Partial fell area as shown on the AIA plan.	C12
G04	Various	Partial fell area as shown on the AIA plan.	B12

All tree work is to be undertaken in accordance with British Standard BS 5836:2010 Tree Work - Recommendations. All stumps are to be removed and the site is to be left as found. Care is to be taken of the ground and retained trees to make sure that it does not become compacted as a result of tree surgery operations. No equipment or vehicles such as lorries, tractors, excavators or cranes shall be parked or driven beneath the crowns of any retained trees, to prevent subsequent compaction and root death.

Protective Fencing

To be erected prior to the commencement of all works on site, and remain in place throughout construction.

Default specification: To comprise either 2.4m wooden site hoarding, or 2.2m high scaffolding framework comprising of vertical and horizontal framework, well braced to resist impacts, with uprights to be spaced at a maximum of 3.0m intervals and driven into the ground by a minimum of 600mm. On to this, standard anti-climb welded mesh panels are to be securely fixed to each other with at least two scaffold clamps and to the scaffold framework with wire.

Secondary Specification: To comprise of 2m tall welded mesh panels on rubber or concrete feet. Panels are to be joined together using a minimum of two anti-lamper couplers, installed so that they can only be removed from inside the fence. The panels should be supported on the inner side by stabilizer struts, which should be attached to a base plate and secured with ground pins.

All weather notices should be erected at regular intervals on the welded mesh panels with words such as "Construction exclusion zone - Keep out".

Tree Protection Area

KEEP OUT

Do not move this fence

DOWN & COUNTRY PLANNING ACT 1990
THESE ENCLOSED TREES ARE PROTECTED BY PLANNING CONDITIONS AND ARE THE SUBJECT OF A TREE PRESERVATION ORDER. CONTRARIANITY TO THE PROTECTION AREA IS A CRIMINAL OFFENCE.
ANY INTERFERENCE WITH THE PROTECTION AREA MUST BE WITH THE WRITTEN PERMISSION OF THE LOCAL PLANNING AUTHORITY.

Construction exclusion zone

A construction exclusion zone (CEZ) is a designated area where there is to be no construction activity whatsoever. Access to the area for construction personnel or machinery is strictly prohibited and there is no scope for materials or waste storage etc.

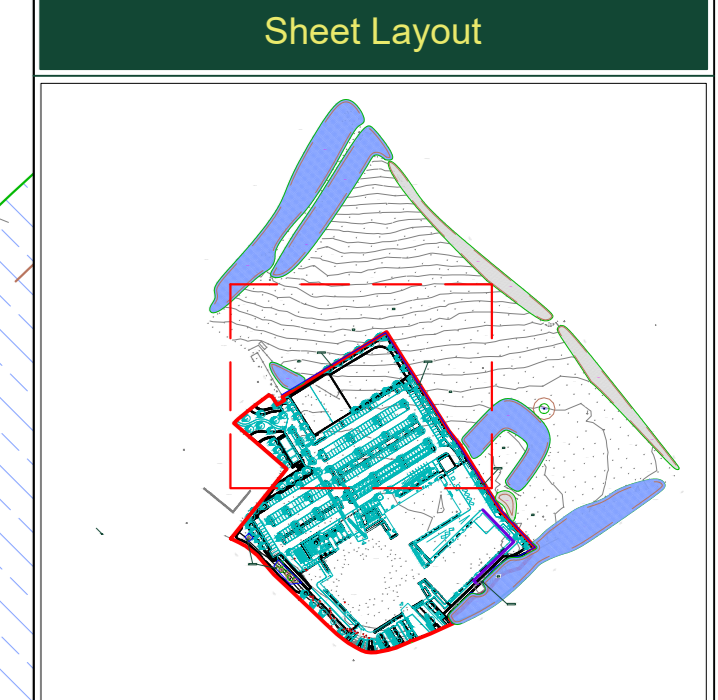
Arboricultural Supervision

The arboricultural consultant will be required to attend site to directly supervise all demolition and construction works that have to be undertaken within the tree protection area. This will include:

- Pre-commencement site meeting
- Location of protective measures.
- Any demolition and/or excavations within or adjacent to BPAs, including foundations, hard surfacing or underground services. (A non-exhaustive list)
- Arboricultural sign off and removal of protective measures.

Arboricultural Method Statement

Please refer to Arbttech Consulting Ltd Tree Schedule and Arboricultural Method Statement, for full details on all surveyed trees and how all aspects of the development might be implemented without detriment to retained trees.



Rev.	Date	Notes
A	05/04/24	Updated with latest layout.



Project: Cardiff and Vale College, Advanced Technology Centre, Land off Port Road, Vale of Glamorgan, CF62 3BD

Client: WEPCo

Drawing: Tree Protection Plan

Based on: VG0101-ALA-00-XX-DR-L-00002 Rev P08 Landscape General Arrangement

Drawing No: Arbttech TPP 01 (Sheet 1 of 3) Rev: A

Date: Jan 2024 Scale: 1:200 @ A0 Drawn: EK

Key:

Tree No:	T01	Tree Category:	Trunk:
BPAL:	Category 'A' trees	Category 'B' trees	Category 'C' trees
Category 'B' groups:	Category 'B' trees	Category 'C' trees	Trees to be removed
Planting Site (Point):	Proposed site	Protective fencing	
Planting locations:	Proposed site	Protective fencing	

