

Note: No level changes or construction works are proposed within the RPA's of trees T01 - T06.

Proposed level changes: Regrading of the existing landscaping area is required within the RPA's of trees T09 - T22, as such these trees are proposed for removal. New planting is proposed throughout the scheme to mitigate the loss.

Tree work: G01 is to be removed as shown to facilitate the required 8m construction access. Access required for utilities connections surrounding the existing Openreach box.

Arboricultural Impacts

Impacts	No. of trees
Trees to be removed	37
Grouped trees to be removed (partial removal of groups)	103
Trees with proposed retention on RPA's	0
Group 1 hedges with proposed retention on RPA's	0
Trees that will require pruning	0
Group 1 hedges that will require pruning	0
Trees to be transplanted	0
Group 1 hedges to be transplanted	0

Tree Work Schedule

No.	Species	Works	Category
T07	Common Ash	Fall to ground level, remove stump	U
T08	Field Maple	Fall to ground level, remove stump	C1
T09	Sliver Birch	Fall to ground level, remove stump	C12
T10	Sliver Birch	Fall to ground level, remove stump	C12
T11	Sliver Birch	Fall to ground level, remove stump	C12
T12	Sliver Birch	Fall to ground level, remove stump	C12
T13	Sliver Birch	Fall to ground level, remove stump	C12
T14	Field Maple	Fall to ground level, remove stump	C12
T15	Goat Willow	Fall to ground level, remove stump	C12
T16	Sliver Birch	Fall to ground level, remove stump	C12
T17	Sliver Birch	Fall to ground level, remove stump	C12
T18	Sliver Birch	Fall to ground level, remove stump	C12
T19	Sliver Birch	Fall to ground level, remove stump	C12
T20	Sliver Birch	Fall to ground level, remove stump	C12
T21	Sliver Birch	Fall to ground level, remove stump	C12
T22	Sliver Birch	Fall to ground level, remove stump	C12
T23	Sliver Birch	Fall to ground level, remove stump	C12
T24	Field Maple	Fall to ground level, remove stump	C12
T25	Sliver Birch	Fall to ground level, remove stump	C12
T26	Sliver Birch	Fall to ground level, remove stump	C12
T27	Sliver Birch	Fall to ground level, remove stump	C12
T28	Sliver Birch	Fall to ground level, remove stump	U
T29	Sliver Birch	Fall to ground level, remove stump	C12
T30	Sliver Birch	Fall to ground level, remove stump	C12
T31	Field Maple	Fall to ground level, remove stump	C12
T32	Sliver Birch	Fall to ground level, remove stump	C12
T33	Sliver Birch	Fall to ground level, remove stump	C12
T34	Sliver Birch	Fall to ground level, remove stump	C12
T35	Sliver Birch	Fall to ground level, remove stump	C12
T36	Sliver Birch	Fall to ground level, remove stump	C12
T37	Sliver Birch	Fall to ground level, remove stump	C12
G01	Various	Partial cut area as shown on the AIA plan.	B12
G02	Various	Partial cut area as shown on the AIA plan.	B12
G03	Various	Partial cut area as shown on the AIA plan.	B12
G04	Various	Partial cut area as shown on the AIA plan.	B12

No. of individual trees to be removed

U	A	B	Total
2	9	2	37

No. of groups / hedges to be removed

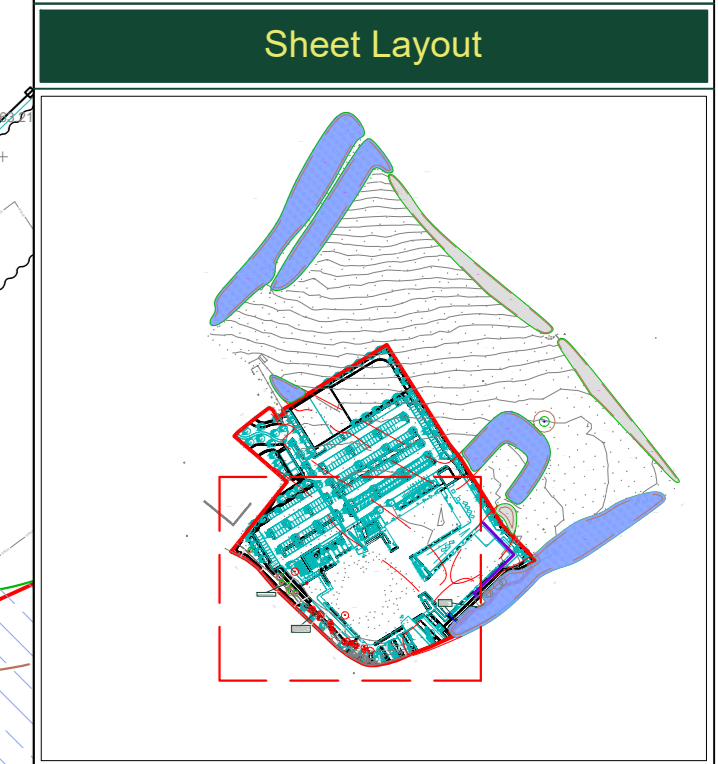
U	A	B	Total
0 (0)	0 (0)	1 (0)	1 (0)

Utility apparatus

Underground utility apparatus
Mechanical trenching for the installation of underground apparatus and drainage sewers any roots present and can change the local hydrology in a way that adversely affects the health of the tree. For this reason, particular care should be taken in the root and methods of installation of all underground apparatus. Wherever possible, apparatus should be routed outside of RPA's. Where this is not possible, it is preferable to keep apparatus together in common ducts, all inspection chambers should be sited outside of the RPA's.

Where underground apparatus is to pass within the RPA's, detailed plans showing the proposed route should be drawn up in conjunction with the project architect. In such cases trenchless insertion methods should be used with entry and retrieval pits being located outside of the RPA's. If the option is not feasible and providing roots can be retained and protected excavations should be undertaken using hand held tools (air-spade, fork, shovel) or a combination of trenchless and manual excavation (broken branch).

Above-ground utility apparatus
Above-ground utility apparatus (including CCTV cameras and lighting) should be sited to avoid the need for detrimental tree pruning, as such the current and future crown size of the tree should be assessed. Tree branches can be pruned back with care to provide space, though it is not appropriate for overhead and significant tree work to bear visual design solution unless this is a suitable management outcome for the tree. Any pruning should be undertaken in accordance with BS3968:2010.



Rev.	Date	Notes
A	05/04/24	Updated with latest layout.



Project: Cardiff and Vale College, Advanced Technology Centre, Land off Port Road, Vale of Glamorgan, CF62 3BD

Client: WEPCo

Drawing: Arboricultural Impact Assessment

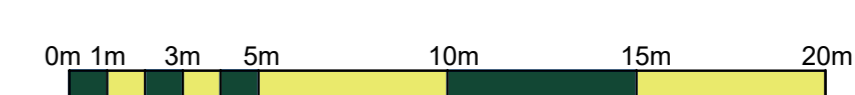
Based on: VG0101-ALA-00-XX-DR-L-00002 Rev P08 Landscape General Arrangement

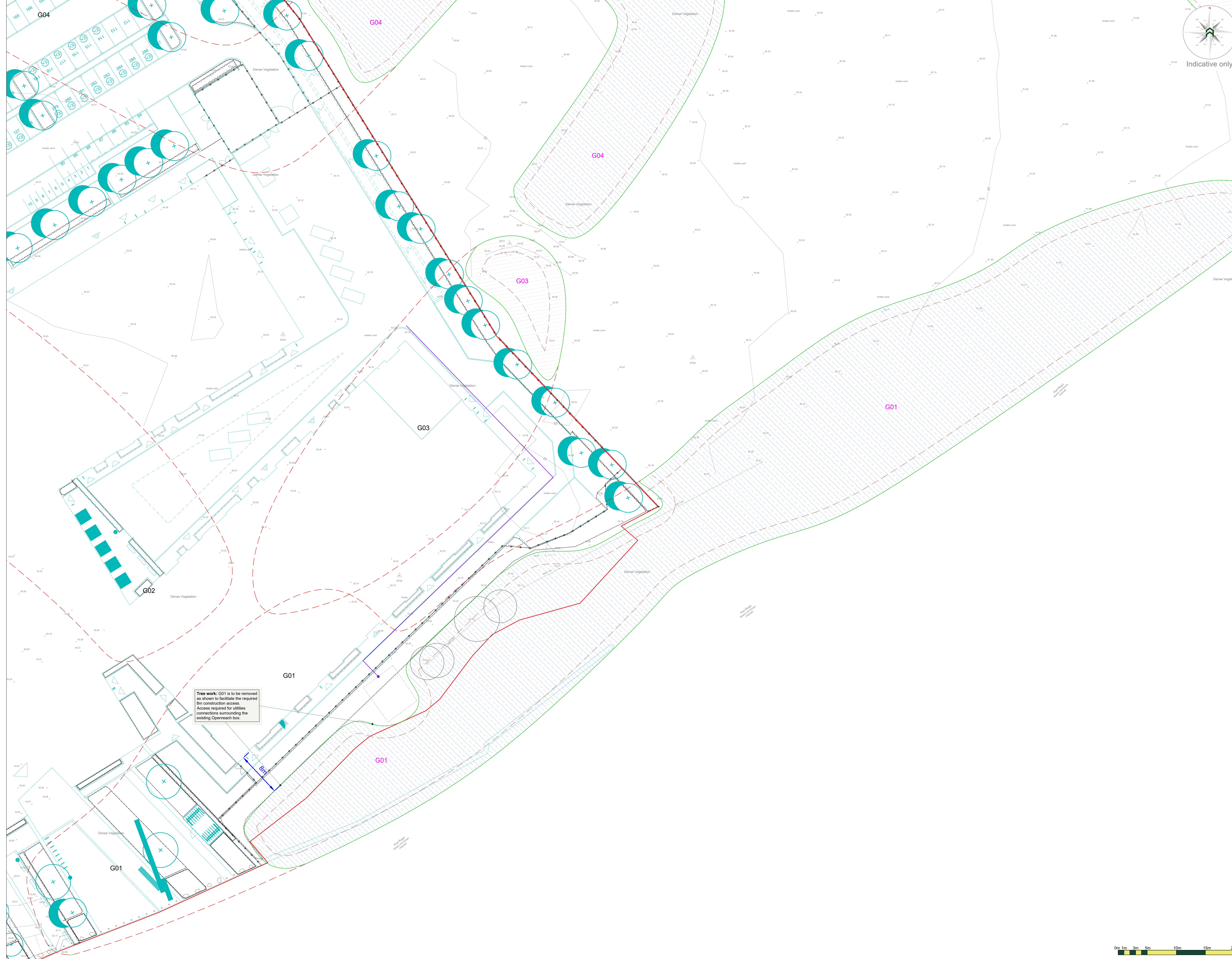
Drawing No: Arbtech AIA 01 (Sheet 2 of 3)

Date: Jan 2024
Scale: 1:200 @ A0
Drawn: EK

Key:

Tree	T01	Tree	Trunk
RPA:	Category 'A' trees	Category 'B' trees	Category 'C' trees
Category 'B' groups:	Category 'C' trees	Category 'C' groups	
Existing Site (Point)	Proposed Site	Trees to be removed	T07
Planting locations:			





Tree work: G01 is to be removed as shown to facilitate the required 8m construction access. Access required for utilities connections surrounding the existing Openreach box.

Arboricultural Impacts

Impacts	No. of trees
Trees to be removed	37
Groups / Hedgcs to be removed (Partial removal of groups)	1 (G)
Trees with proposed measures into RPA	0
Groups / Hedgcs with proposed measures into RPA	0
Trees that will require pruning	0
Groups / Hedgcs that will require pruning	0
Trees to be translocated	0
Groups / Hedgcs to be translocated	0

Tree Work Schedule

No.	Species	Works	Category
T07	Common Ash	Fell to ground level, remove stump	U
T08	Field Maple	Fell to ground level, remove stump	C1
T09	Silver Birch	Fell to ground level, remove stump	C12
T10	Silver Birch	Fell to ground level, remove stump	C12
T11	Silver Birch	Fell to ground level, remove stump	C12
T12	Silver Birch	Fell to ground level, remove stump	C12
T13	Silver Birch	Fell to ground level, remove stump	C12
T14	Field Maple	Fell to ground level, remove stump	C12
T15	Goat Willow	Fell to ground level, remove stump	C12
T16	Silver Birch	Fell to ground level, remove stump	C12
T17	Silver Birch	Fell to ground level, remove stump	C12
T18	Silver Birch	Fell to ground level, remove stump	C12
T19	Silver Birch	Fell to ground level, remove stump	C12
T20	Silver Birch	Fell to ground level, remove stump	C12
T21	Silver Birch	Fell to ground level, remove stump	C12
T22	Silver Birch	Fell to ground level, remove stump	C12
T23	Silver Birch	Fell to ground level, remove stump	C12
T24	Silver Birch	Fell to ground level, remove stump	C12
T25	Silver Birch	Fell to ground level, remove stump	C12
T26	Silver Birch	Fell to ground level, remove stump	C12
T27	Silver Birch	Fell to ground level, remove stump	C12
T28	Silver Birch	Fell to ground level, remove stump	U
T29	Silver Birch	Fell to ground level, remove stump	C12
T30	Silver Birch	Fell to ground level, remove stump	C12
T31	Field Maple	Fell to ground level, remove stump	C12
T32	Silver Birch	Fell to ground level, remove stump	C12
T33	Silver Birch	Fell to ground level, remove stump	C12
T34	Silver Birch	Fell to ground level, remove stump	C12
T35	Silver Birch	Fell to ground level, remove stump	C12
T36	Silver Birch	Fell to ground level, remove stump	C12
T37	Silver Birch	Fell to ground level, remove stump	C12
G01	Various	Partial fell area as shown on the AIA	B12
G02	Various	Partial fell area as shown on the AIA	B12
G03	Various	Partial fell area as shown on the AIA	B12
G04	Various	Partial fell area as shown on the AIA	B12

All tree work to be undertaken in accordance with British Standard BS 3968:2010 Tree work - Recommendations. All arrangements to be removed and the site to be left as found. Care is to be taken of the ground around retained trees to make sure that it does not become compacted as a result of tree surgery operations. No equipment or vehicles such as lorries, cranes, excavators or cranes shall be parked or driven beneath the crowns of any retained trees, to prevent subsequent compaction and root death.

No. of individual trees to be removed

U	A	B	C
2	9	2	37

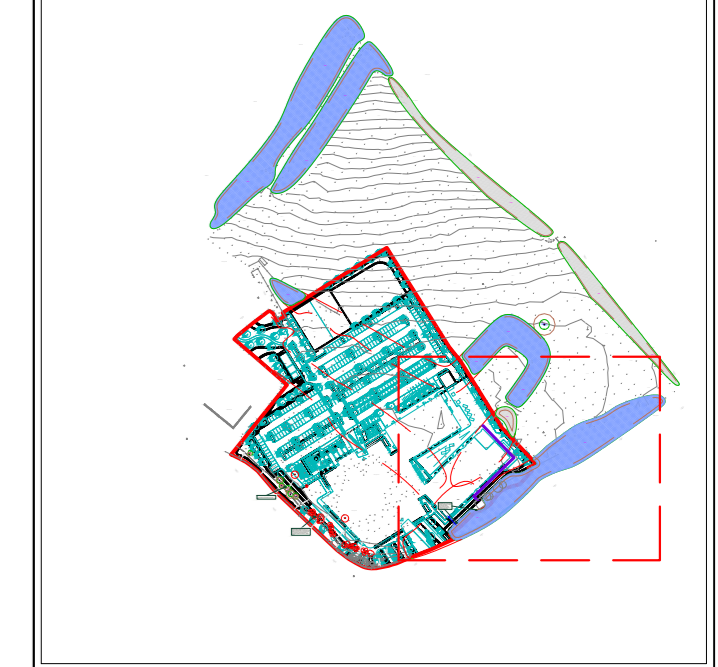
No. of groups / hedgcs to be removed

U	A	B	C
0 (G)	0 (G)	1 (G)	1 (G)

Utility apparatus

Underground utility apparatus
Mechanical trenching for the installation of underground apparatus and drainage serves any roots present and can change the local hydrology in a way that adversely affects the health of the tree. For this reason, particular care should be taken in the route and methods of installation of all underground apparatus. Wherever possible, apparatus should be routed outside of RPAs. Where this is not possible, it is preferable to keep apparatus together in common ducts, all inspection chambers should be sited outside of the RPAs.
Where underground apparatus is to pass within the RPA, detailed plans showing the proposed route should be drawn up in conjunction with the project architect. In such cases trenchless installation methods should be used with entry and retrieval pits being located outside of the RPA. If this option is not feasible and providing roots can be retained and protected excavations should be undertaken using hand held tools (air-spade, fork, saws) or a combination of trenchers and manual excavation (broken boards). Any design and installation should be undertaken in accordance with the National Joint Utilities Guidelines (NJUG).
Above-ground utility apparatus
Above-ground apparatus (including CCTV cameras and lighting) should be sited to avoid the need for detrimental tree pruning, as such the current and future crown size of the tree should be assessed. Tree branches can be pruned back with care to provide space, though this is not appropriate for sensitive and significant trees work to bear visual design solution unless this is a suitable management outcome for the tree. Any pruning should be undertaken in accordance with BS3968:2010

Sheet Layout



Rev: | Date: | Notes:

A	05/04/24	Updated with latest layout
---	----------	----------------------------

Unit 3, Well House Barns, Chester, CH4 0DH
<http://arbtech.co.uk> 01244 661170

Project: Cardiff and Vale College, Advanced Technology Centre, Land off Port Road, Vale of Glamorgan, CF62 3BD

Client: WEPCo

Drawing: Arboricultural Impact Assessment

Based on: VG0101-ALA-00-XX-DR-L-00002 Rev P08 Landscape General Arrangement

Drawing No: Arbtech AIA 01 (Sheet 3 of 3) | Rev: A

Date: Jan 2024 | Scale: 1:200 @ A0 | Drawn: EK

Key:

Tree	T01	Tree	Trunk
RPA	Category 'A' trees	Category 'B' trees	Category 'C' trees
Category 'B' groups	Category 'C' trees	Category 'C' groups	Category 'C' groups
Existing Site (Prop)	Proposed Site	Trees to be removed	T01
Planting locations			

Arbtech Consulting Ltd. 2024. All rights reserved. This drawing is the property of Arbtech Consulting Ltd. and is not to be reproduced without the written consent of Arbtech Consulting Ltd. The information contained herein is for guidance only and does not constitute a contract. The client is responsible for ensuring that the information contained herein is accurate and up to date. The information contained herein is for guidance only and does not constitute a contract. The client is responsible for ensuring that the information contained herein is accurate and up to date.

