

Key

BS 5837 Survey

Tree

- BS 5837 Category B / Moderate Quality
- BS 5837 Category C / Low Quality

Tree Group

- BS 5837 Category B / Moderate Quality
- BS 5837 Category C / Low Quality

Tree Group / Hedge

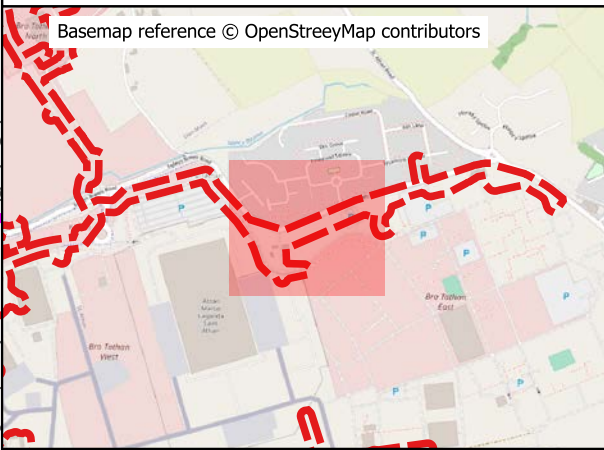
- BS 5837 Category B / Moderate Quality

Arboricultural Constraints / Impacts

- Root Protection Area (Feature Retained)
- Root Protection Area (Feature Removed)
- Crown (Feature Retained)
- Crown (Feature Removed)

Other Item

- Proposed Service Run / Duct
- Arboricultural Study Area



P01	13/07/2023	JM	DF	For Issue
REV	DATE	DRAWN BY	CHECKED BY	REVISION COMMENT



part of CuraTerra

Baleen House
Whale Wharf
Bristol
BS35 1NP
www.ecusltd.co.uk

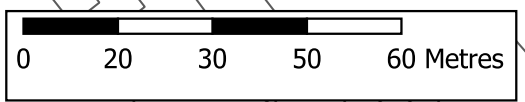
JOB

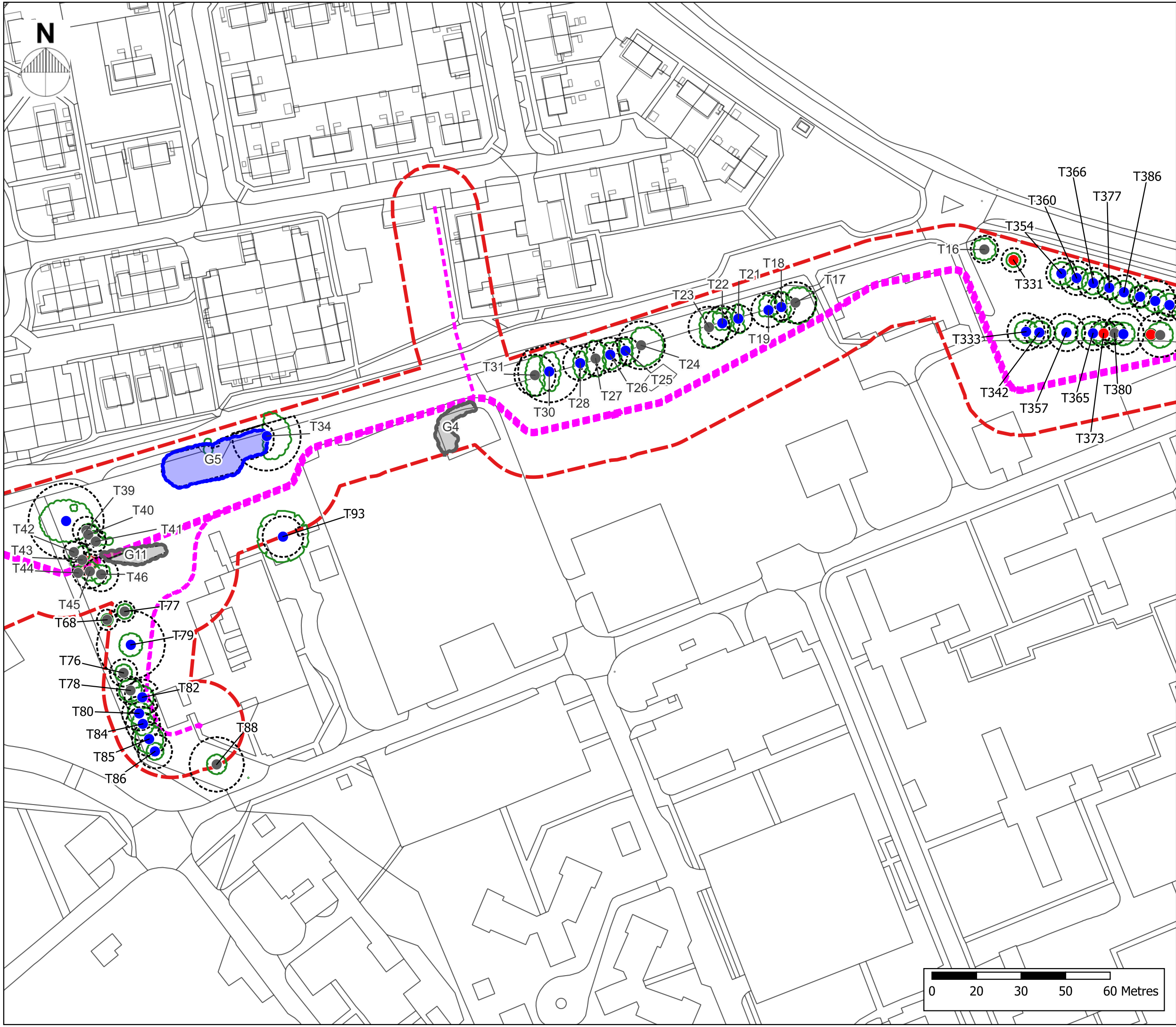
Welsh Government
Bro Tathan (Utilities)

TITLE

Tree Retention and Removal Plan

BY	DATE	SCALE @ A3	DRG. NO.
JM	04/08/2023	1:1250	Figure 4





Key

BS 5837 Survey

Tree

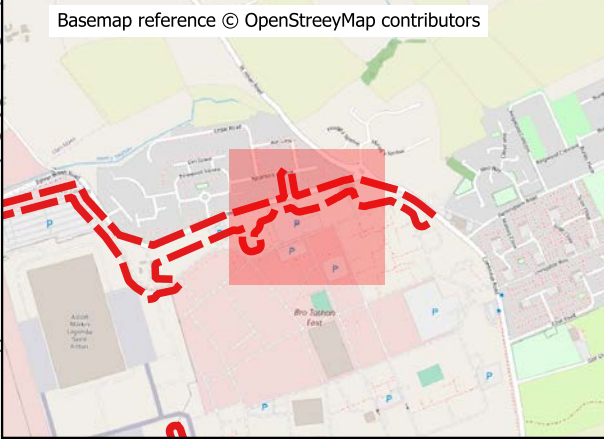
- BS 5837 Category B / Moderate Quality
- BS 5837 Category C / Low Quality
- BS 5837 Category U / Very-Low Quality

Arboricultural Constraints / Impacts

- ⋯ Root Protection Area (Feature Retained)
- ⋯ Root Protection Area (Feature Removed)
- Crown (Feature Retained)
- Crown (Feature Removed)

Other Item

- ⋯ Proposed Service Run / Duct
- ⋯ Arboricultural Study Area



P01	13/07/2023	JM	DF	For Issue
REV	DATE	DRAWN BY	CHECKED BY	REVISION COMMENT

Baleen House
Whale Wharf
Bristol
BS35 1NP
www.ecusltd.co.uk

JOB

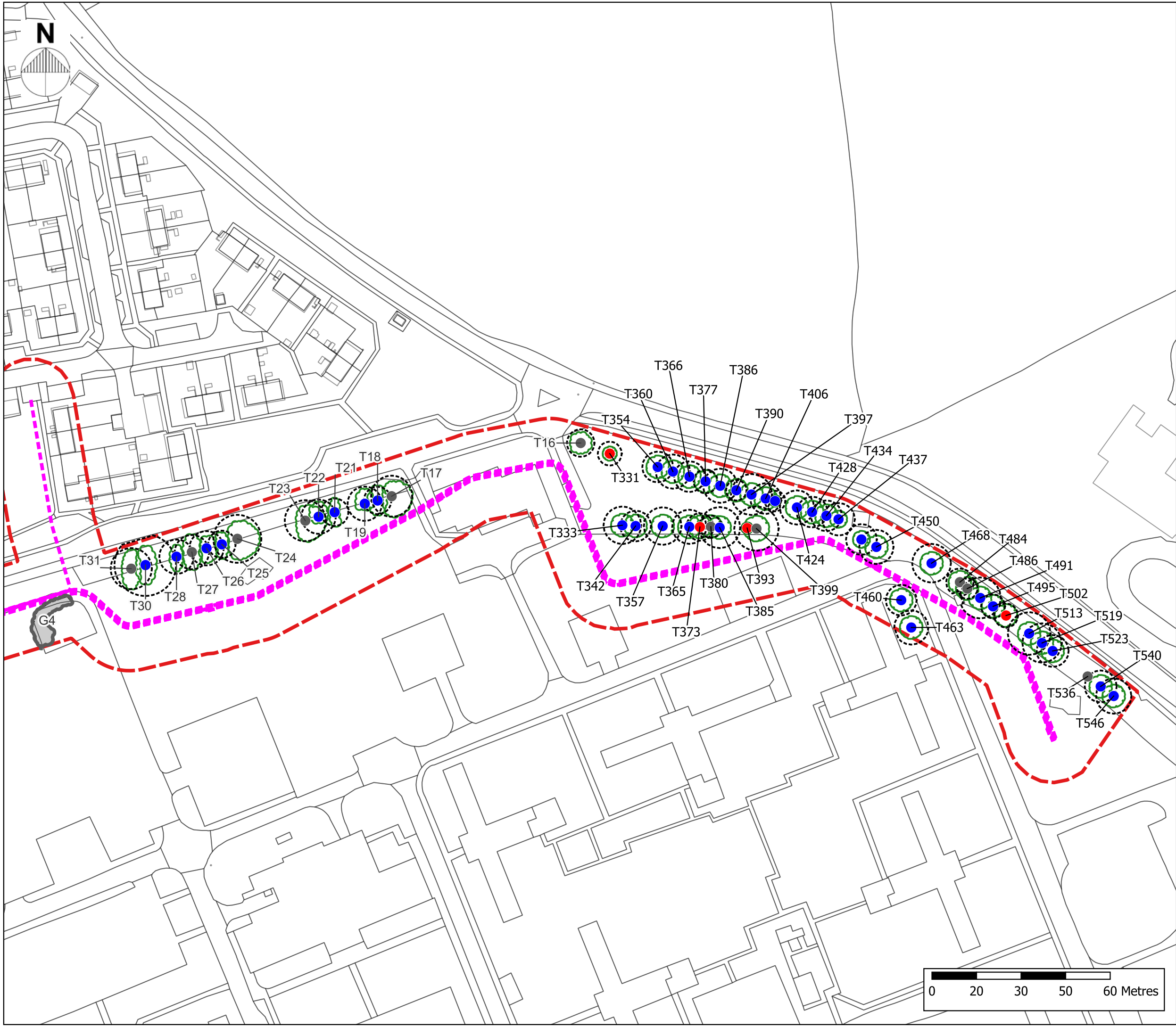
Welsh Government
Bro Tathan (Utilities)

TITLE

Tree Retention and Removal Plan

BY	DATE	SCALE @ A3	DRG. NO.
JM	04/08/2023	1:1250	Figure 5





Key

BS 5837 Survey

Tree

- BS 5837 Category B / Moderate Quality
- BS 5837 Category C / Low Quality
- BS 5837 Category U / Very-Low Quality

Arboricultural Constraints / Impacts

- ⋯ Root Protection Area (Feature Retained)
- Crown (Feature Retained)

Other Item

- Proposed Service Run / Duct
- ⌈⌋ Arboricultural Study Area



P01	13/07/2023	JM	DF	For Issue
REV	DATE	DRAWN BY	CHECKED BY	REVISION COMMENT

Baleen House
Whale Wharf
Bristol
BS35 1NP
www.ecusltd.co.uk

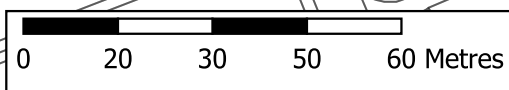
JOB

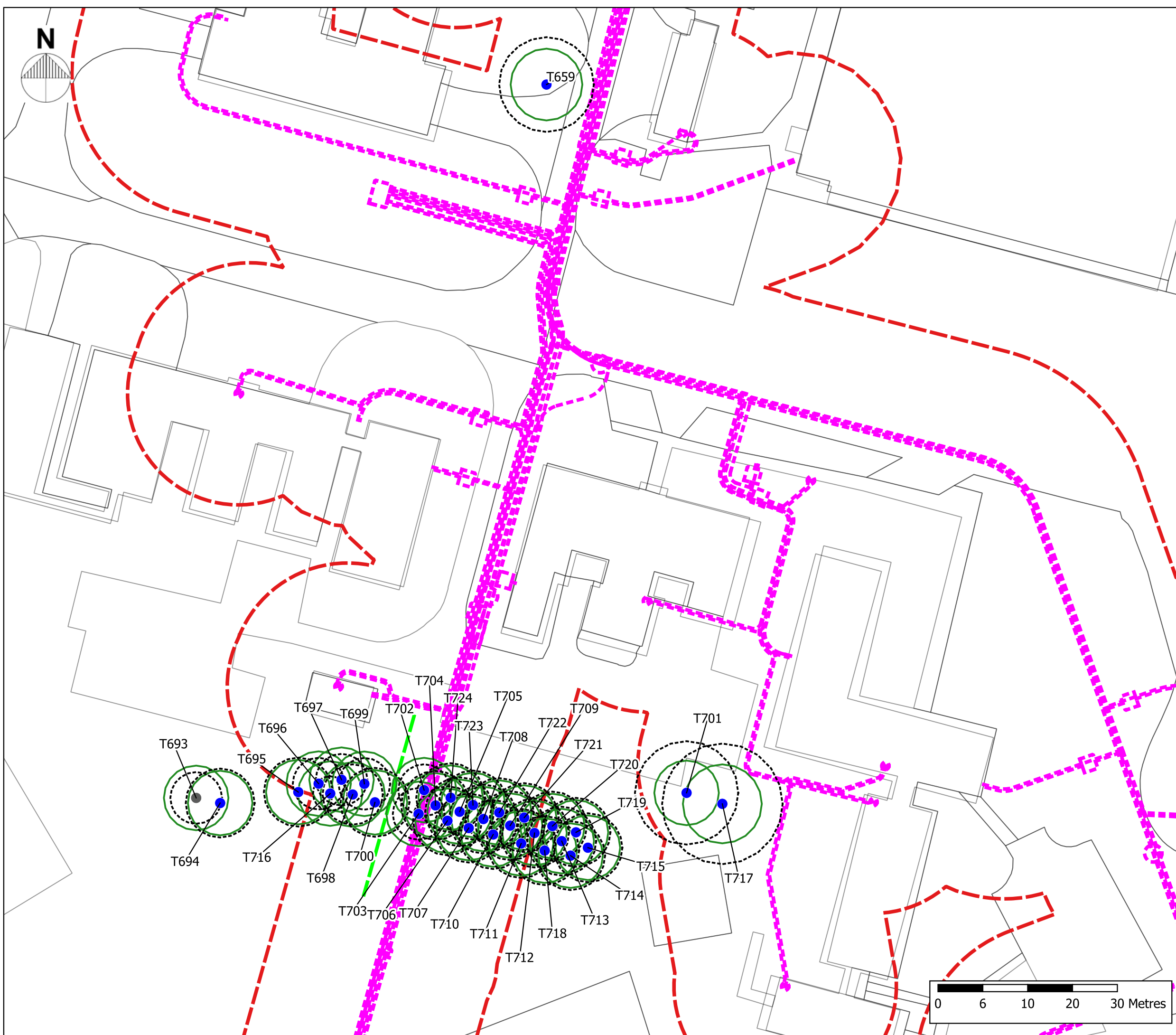
Welsh Government
Bro Tathan (Utilities)

TITLE

Tree Retention and Removal Plan

BY	DATE	SCALE @ A3	DRG. NO.
JM	04/08/2023	1:1250	Figure 6





Key

BS 5837 Survey

Tree

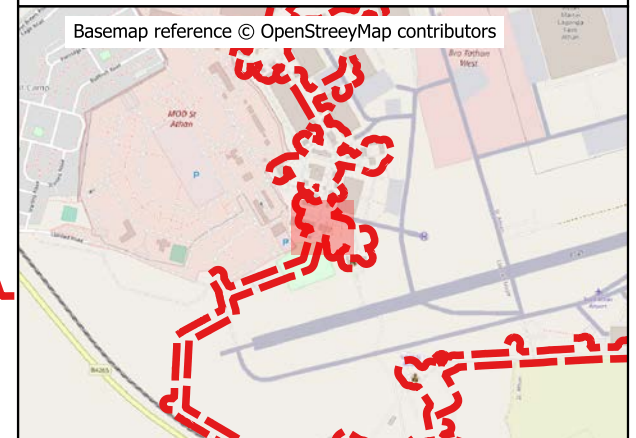
- BS 5837 Category B / Moderate Quality
- BS 5837 Category C / Low Quality

Arboricultural Constraints / Impacts

- ⋯ Root Protection Area (Feature Retained)
- Crown (Feature Retained)

Other Item

- ⋯ Proposed Service Run / Duct
- ⋯ Ammended Alignment Service Run / Duct
- ⋯ Arboricultural Study Area



P01	13/07/2023	JM	DF	For Issue
REV	DATE	DRAWN BY	CHECKED BY	REVISION COMMENT

Baleen House
Whale Wharf
Bristol
BS35 1NP
www.ecusltd.co.uk

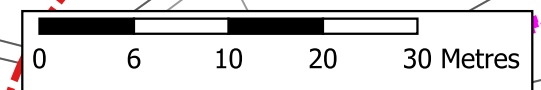
JOB

Welsh Government
Bro Tathan (Utilities)

TITLE

Tree Retention and Removal Plan

BY	DATE	SCALE @ A3	DRG. NO.
JM	04/08/2023	1:500	Figure 7





Key

BS 5837 Survey

Tree Group / Hedge

—•— BS 5837 Category B / Moderate Quality

Arboricultural Constraints / Impacts

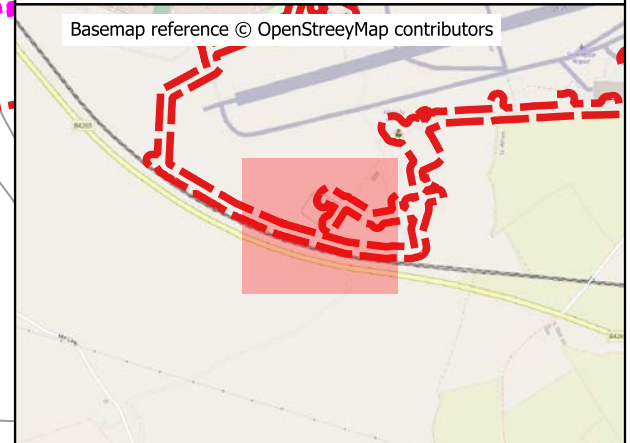
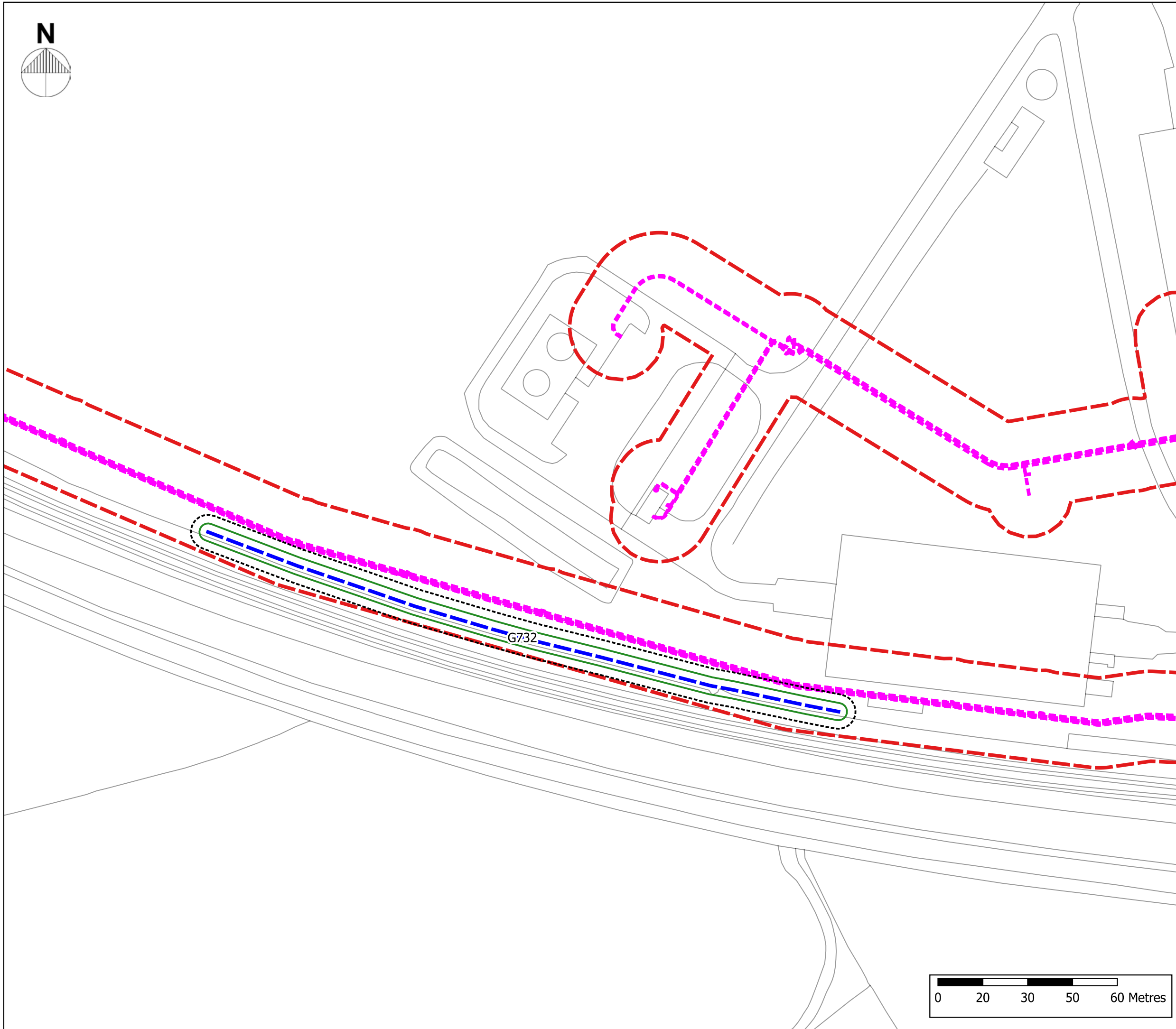
⋯ Root Protection Area (Feature Retained)

□ Crown (Feature Retained)

Other Item

⋯ Proposed Service Run / Duct

⋯ Arboricultural Study Area



P01	13/07/2023	JM	DF	For Comment
REV	DATE	DRAWN BY	CHECKED BY	REVISION COMMENT



part of CuraTerra

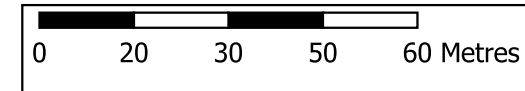
Baleen House
Whale Wharf
Bristol
BS35 1NP
www.ecusltd.co.uk

JOB

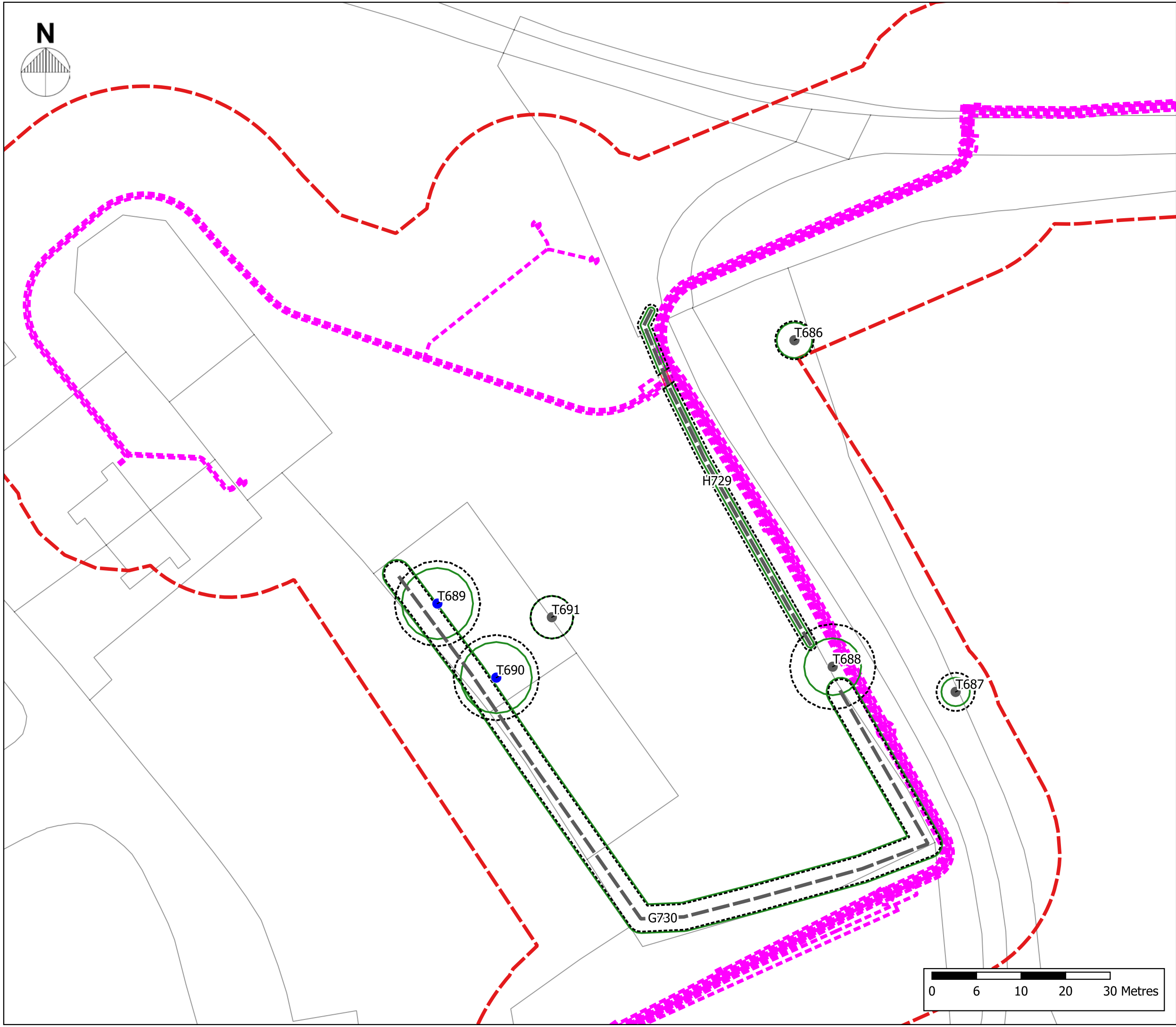
Welsh Government
Bro Tathan (Utilities)

TITLE

Tree Retention and Removal Plan



BY	DATE	SCALE @ A3	DRG. NO.
JM	04/08/2023	1:1250	Figure 8



Key

BS 5837 Survey

- Tree**
- BS 5837 Category B / Moderate Quality
 - BS 5837 Category C / Low Quality

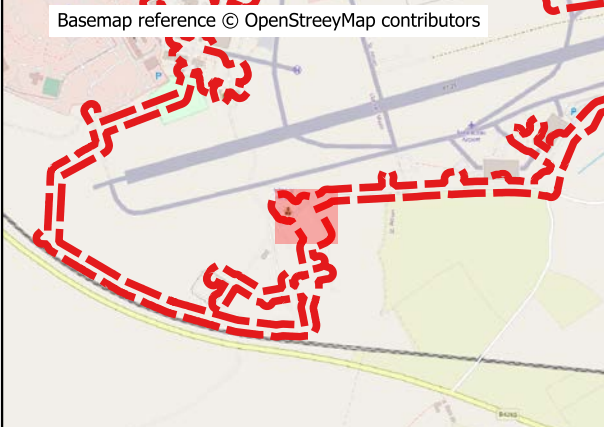
- Tree Group / Hedge**
- BS 5837 Category C / Low Quality

Arboricultural Constraints / Impacts

- ⋯ Root Protection Area (Feature Retained)
- ⋯ Root Protection Area (Feature Removed)
- Crown (Feature Retained)
- Crown (Feature Removed)

Other Item

- ⋯ Proposed Service Run / Duct
- ⋯ Arboricultural Study Area



P01	13/07/2023	JM	DF	For Issue
-----	------------	----	----	-----------

REV	DATE	DRAWN BY	CHECKED BY	REVISION COMMENT
-----	------	----------	------------	------------------



part of CuraTerra

Baleen House
Whale Wharf
Bristol
BS35 1NP
www.ecusltd.co.uk

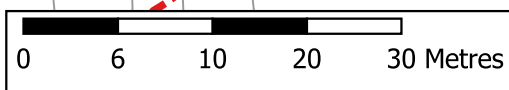
JOB

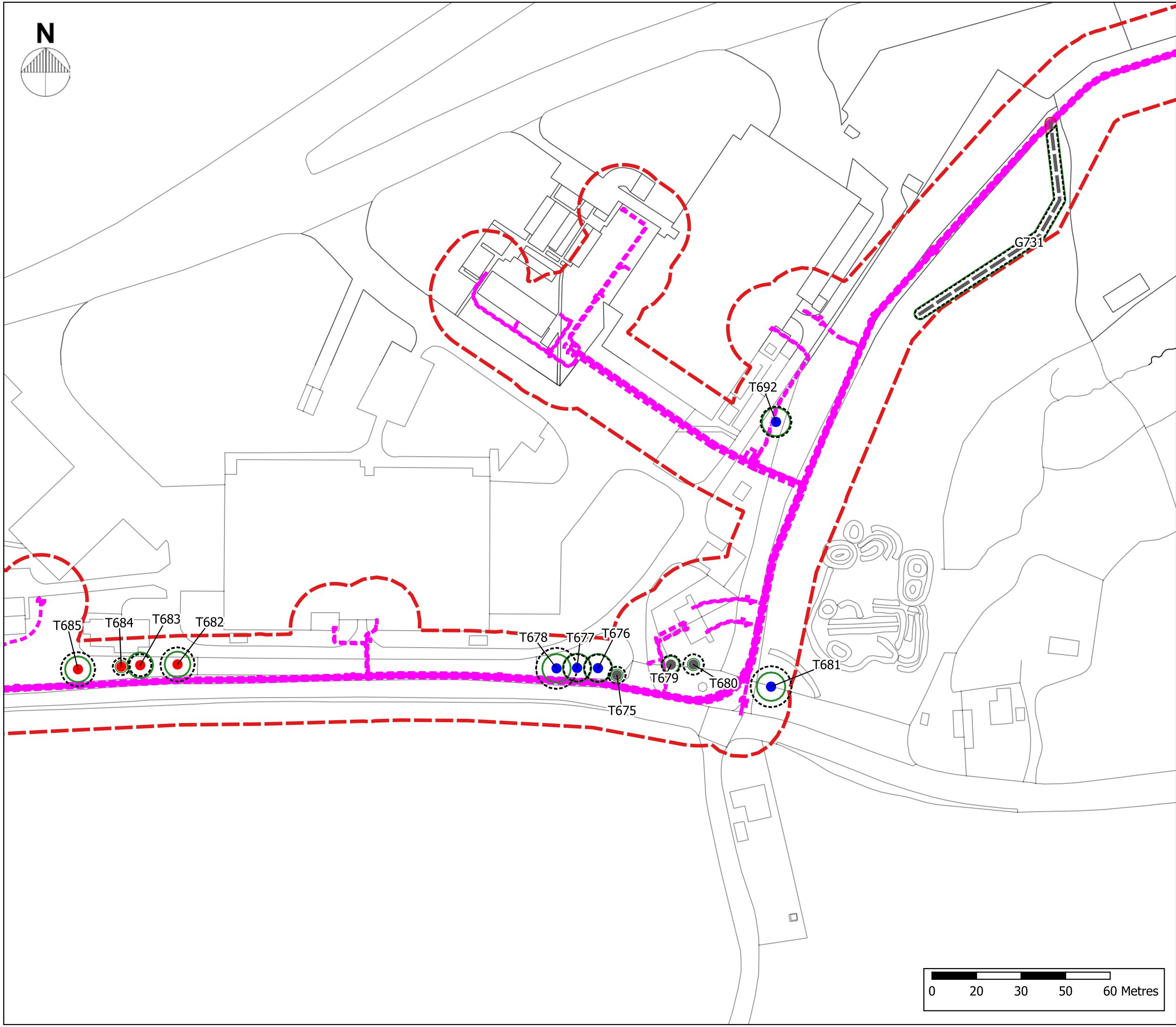
Welsh Government
Bro Tathan (Utilities)

TITLE

Tree Retention and Removal Plan

BY	DATE	SCALE @ A3	DRG. NO.
JM	04/08/2023	1:500	Figure 9





Key

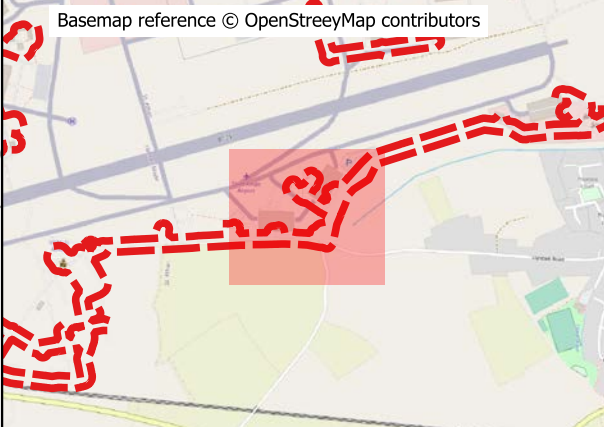
BS 5837 Survey

- Tree**
- BS 5837 Category B / Moderate Quality
 - BS 5837 Category C / Low Quality
 - BS 5837 Category U / Very-Low Quality

- Tree Group / Hedge**
- BS 5837 Category C / Low Quality

- Arboricultural Constraints / Impacts**
- ⋯ Root Protection Area (Feature Retained)
 - ⋯ Root Protection Area (Feature Removed)
 - Crown (Feature Retained)
 - Crown (Feature Removed)

- Other Item**
- Proposed Service Run / Duct
 - Arboricultural Study Area



P01	13/07/2023	JM	DF	For Issue
REV	DATE	DRAWN BY	CHECKED BY	REVISION COMMENT



part of CuraTerra

Baleen House
Whale Wharf
Bristol
BS35 1NP
www.ecusltd.co.uk

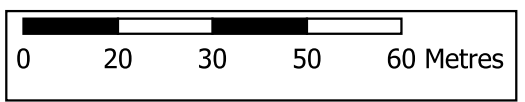
JOB

Welsh Government
Bro Tathan (Utilities)

TITLE

Tree Retention and Removal Plan

BY	DATE	SCALE @ A3	DRG. NO.
JM	04/08/2023	1:1250	Figure 10





Key

BS 5837 Survey

Tree

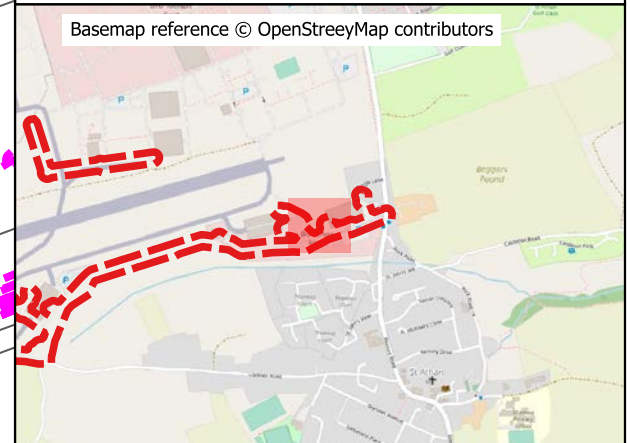
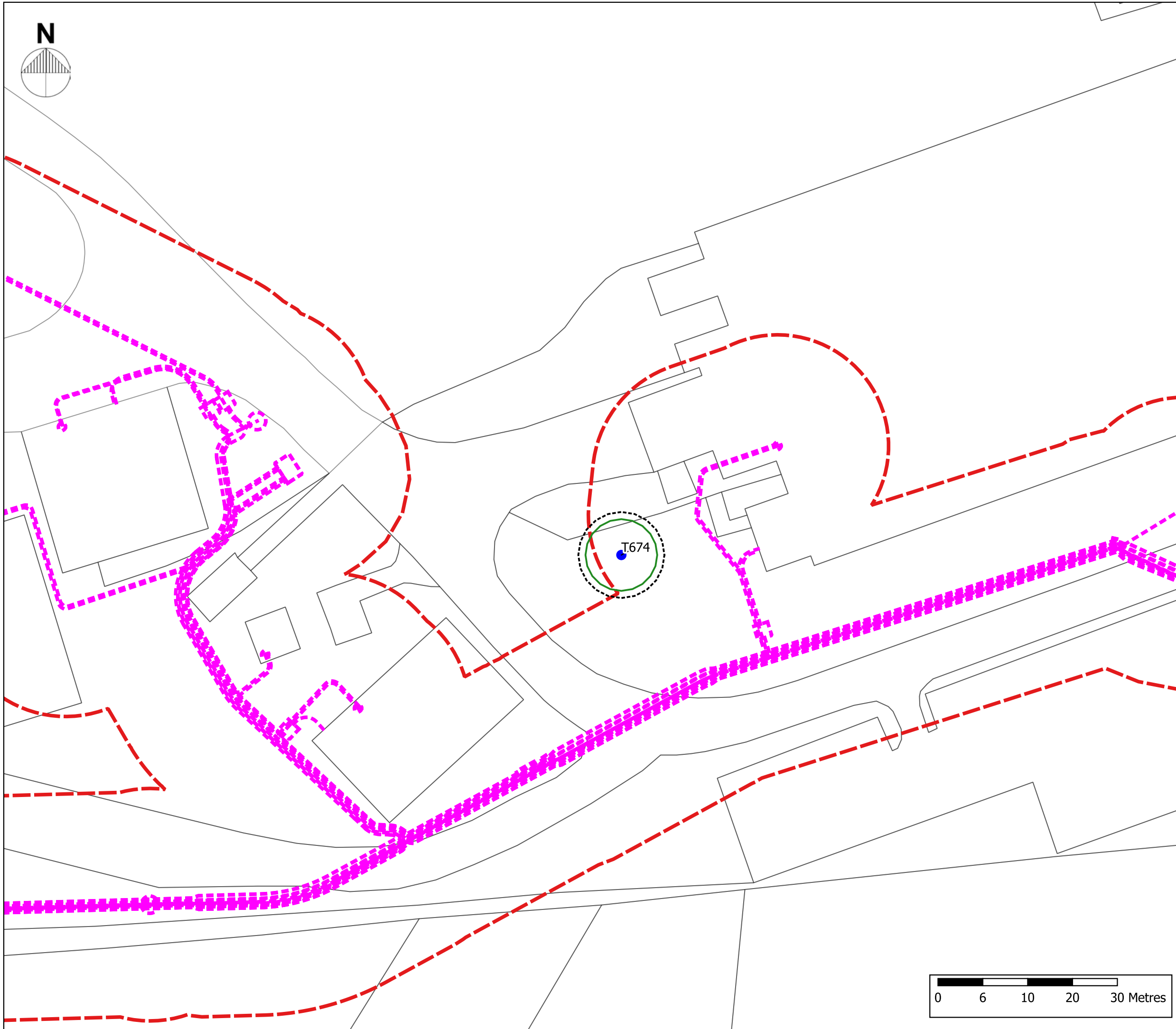
- BS 5837 Category B / Moderate Quality

Arboricultural Constraints / Impacts

- ⋯ Root Protection Area (Feature Retained)
- Crown (Feature Retained)

Other Item

- ⋯ Proposed Service Run / Duct
- ⋯ Arboricultural Study Area



P01	13/07/2023	JM	DF	For Issue
REV	DATE	DRAWN BY	CHECKED BY	REVISION COMMENT

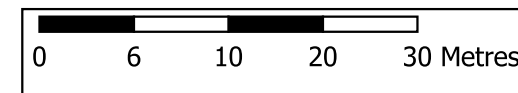
Baleen House
Whale Wharf
Bristol
BS35 1NP
www.ecusltd.co.uk

JOB

Welsh Government
Bro Tathan (Utilities)

TITLE

Tree Retention and Removal Plan



BY	DATE	SCALE @ A3	DRG. NO.
JM	04/08/2023	1:500	Figure 11

