

# Appendix C

---

**SITE PLANS**



DO NOT SCALE

NOTES

1. ALL LEVELS ARE IN METRES AOD UNLESS OTHERWISE SPECIFIED.
2. ALL STORAGE HAVE BEEN SIZED USING FEH RAINFALL DATA AND IS INDICATIVE WITH THE FOLLOWING FACTORS NEEDING CONFIRMATION PRIOR TO DETAILED DESIGN - FINALISED SITE LAYOUT PLAN, FLOOD LEVELS FROM THE ADJACENT RIVER ELY.
3. PRELIMINARY STORAGE VOLUMES ARE BASED ON VARIABLE DISCHARGE OUTFALLS. ONCE FLOOD LEVELS ARE CONFIRMED AND SHOULD IT BE FOUND THAT OUTFALLS ARE SURCHARGED THIS WILL AFFECT THE STORAGE VOLUMES REQUIRED ON SITE.
4. SITE LAYOUT TAKEN FROM MASTER PLAN RECEIVED FROM LOYN+CO ARCHITECTS JULY 2022.
5. IT IS PROPOSED TO DISCHARGE ALL SURFACE WATER RUNOFF FROM THE SITE TO THE ADJACENT RIVER ELY USING A STAGE DISCHARGE APPROACH, WHICH IS TO BE AGREED WITH THE SAB PRIOR TO DETAILED DESIGN.
6. TOPOGRAPHICAL DATA TAKEN FROM DRAWING 2786-T-001 THROUGH 010 PRODUCED BY GWALIA SURVEYORS DATED 04/02/2019.
7. ATTENUATION PROVISIONS FOR RAINGARDENS HAVE NOT BEEN FACTORED INTO THE AVAILABLE ON SITE STORAGE, TO BE CONFIRMED AS PART OF DETAILED DESIGN.

KEY

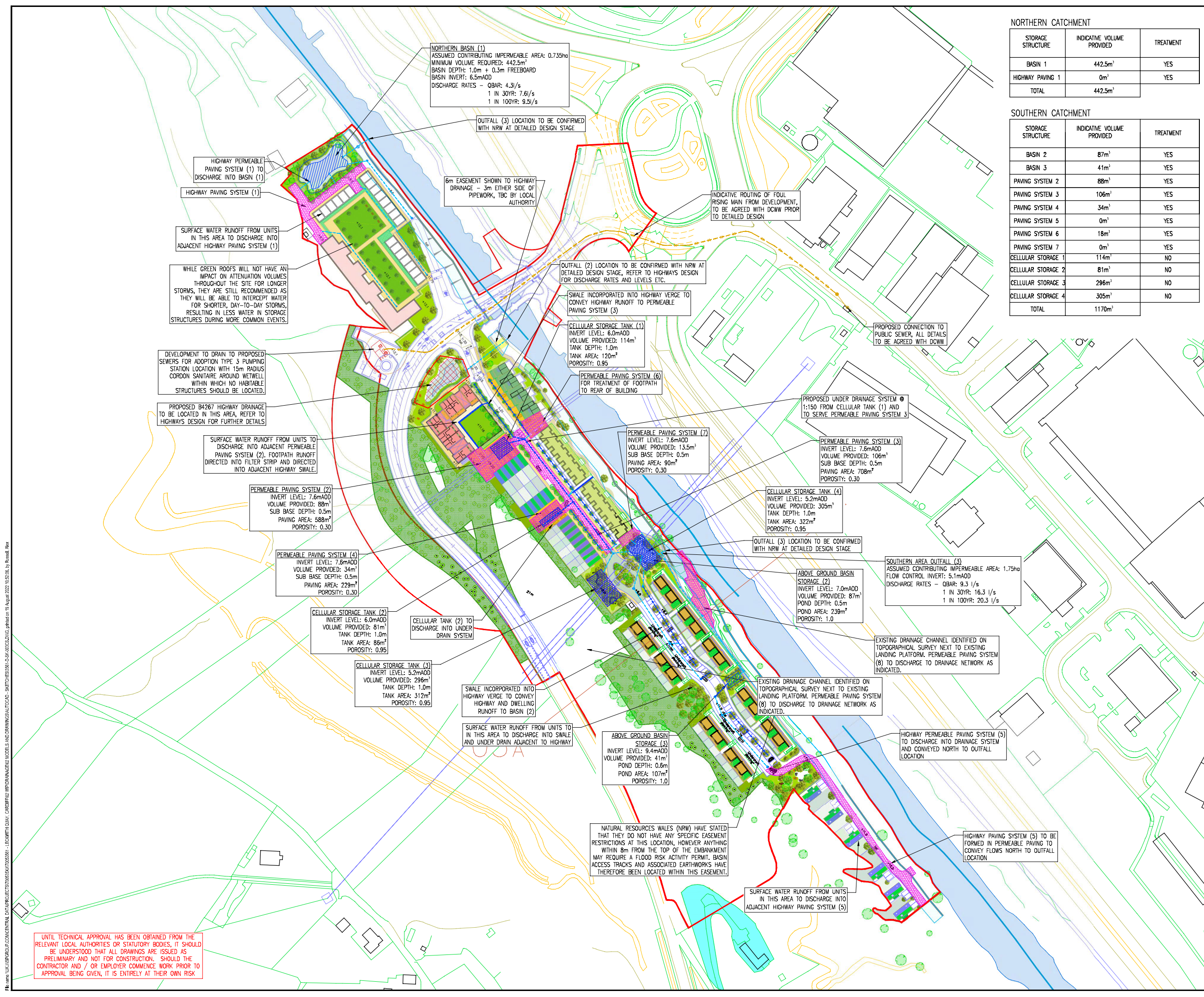
- SITE BOUNDARY
- PROPOSED LANDSCAPED SUDS
- CELLULAR STORAGE TANK
- PERMEABLE PAVING SYSTEM
- PROPOSED SURFACE WATER SEWER
- PROPOSED FOUL RISING MAIN
- PROPOSED PERFORATED PIPEWORK
- PROPOSED FLOW CONTROL CHAMBER
- 15m RADIUS CORDON SANITAIRE
- INDICATIVE RAINGARDENS

NORTHERN CATCHMENT

STORAGE STRUCTURE	INDICATIVE VOLUME PROVIDED	TREATMENT
BASIN 1	442.5m <sup>3</sup>	YES
HIGHWAY PAVING 1	0m <sup>3</sup>	YES
TOTAL	442.5m <sup>3</sup>	

SOUTHERN CATCHMENT

STORAGE STRUCTURE	INDICATIVE VOLUME PROVIDED	TREATMENT
BASIN 2	87m <sup>3</sup>	YES
BASIN 3	41m <sup>3</sup>	YES
PAVING SYSTEM 2	88m <sup>3</sup>	YES
PAVING SYSTEM 3	106m <sup>3</sup>	YES
PAVING SYSTEM 4	34m <sup>3</sup>	YES
PAVING SYSTEM 5	0m <sup>3</sup>	YES
PAVING SYSTEM 6	18m <sup>3</sup>	YES
PAVING SYSTEM 7	0m <sup>3</sup>	YES
CELLULAR STORAGE 1	114m <sup>3</sup>	NO
CELLULAR STORAGE 2	81m <sup>3</sup>	NO
CELLULAR STORAGE 3	296m <sup>3</sup>	NO
CELLULAR STORAGE 4	305m <sup>3</sup>	NO
TOTAL	1170m <sup>3</sup>	



FILE NAME: \\UK\SPOFOR\COMMON\DATA\PROJECTS\2786\3561\3561-DR-C-200\3561-DR-C-200-03\3561-DR-C-200-03.dwg, PLOTTED ON: 18 August 2022 10:52:06, by: Russell\_Alex

UNTIL TECHNICAL APPROVAL HAS BEEN OBTAINED FROM THE RELEVANT LOCAL AUTHORITIES OR STATUTORY BODIES, IT SHOULD BE UNDERSTOOD THAT ALL DRAWINGS ARE ISSUED AS PRELIMINARY AND NOT FOR CONSTRUCTION. SHOULD THE CONTRACTOR AND / OR EMPLOYER COMMENCE WORK PRIOR TO APPROVAL BEING GIVEN, IT IS ENTIRELY AT THEIR OWN RISK

PO3	19/08/2022	AR	REVISED TO SUIT NEW LAYOUT	AR	AB
PO2	17/09/2020	CS	REVISED TO SUIT NEW LAYOUT	AR	AB
PO1	20/02/2020	CS	FIRST ISSUE	AR	AB
REV	DATE	BY	DESCRIPTION	CHK	APP

**DRAWING STATUS:** S2 - FOR INFORMATION

1 Capital Quarter, Tyndall St, Cardiff, CF10 4BZ, UK  
 T +44 (0) 292 076 9200  
 wsp.com

**CLIENT:** PHIL WORTHING

**ARCHITECT:** LOYN + CO ARCHITECTS

**PROJECT:** RESIDENTIAL DEVELOPMENT AT FORMER LECKWITH QUAY, CARDIFF

**TITLE:** DRAINAGE STRATEGY CONCEPT PLAN

SCALE @ AT: 1:1250	CHECKED: AB	APPROVED: AB
PROJECT NO: 70063561	DESIGNED: AR	DRAWN: AR
	DATE: AUG 2022	

DRAWING NO: 3561-WSP-DR-C-200  
 REV: P03

© WSP UK Ltd