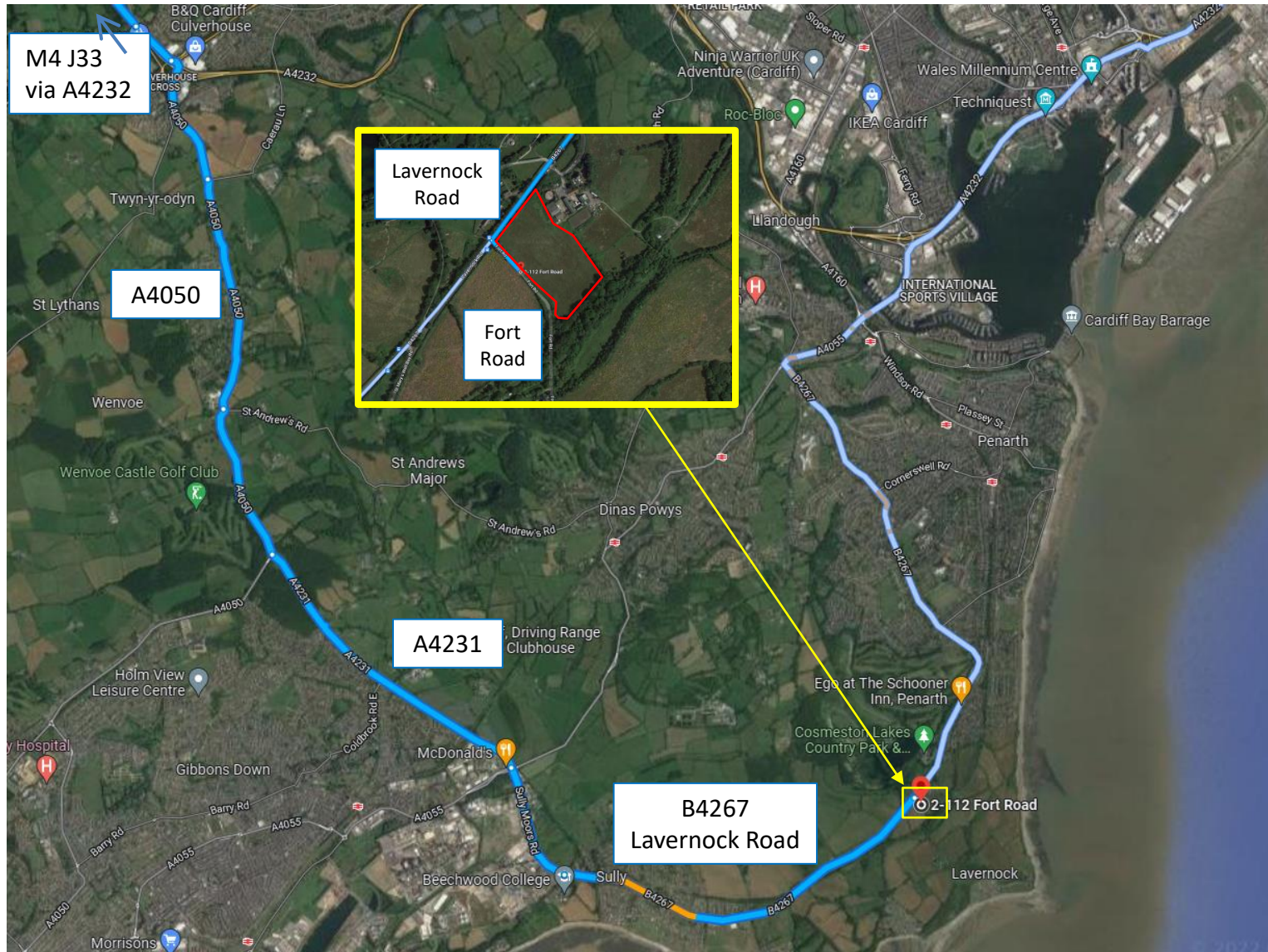


Ysgol Y Deri Expansion – Scheme Phasing

Notes

Proposed Construction Route To & From Site

M4 Junction 33, A4232 (to Culverhouse Cross), A4050, A4231, B4267 Lavernock Road, Fort Road



Rev	Date	Reason for Issue
-	08/03/22	Initial Issue



Date		08/03/22
Number	YYDE/Phase/-	Revision
		-

Ysgol Y Deri Expansion – Scheme Phasing

Single Phase Scheme (3 parts)

Part A: Enabling Works

Part B: Main Build

Part C: Decant & Completion

Lower Cosmeston Farm



Existing Site
Layout

Notes

Rev	Date	Reason for Issue
-	08/03/22	Initial Issue



Date
08/03/22

Number	Revision
YYDE/Phase/-	-

Ysgol Y Deri Expansion – Scheme Phasing

Notes

Part A: Enabling Works



-	24/01/22	Updated in line with new design, programme and build sequence.
-	08/03/22	Initial Issue
Rev	Date	Reason for Issue

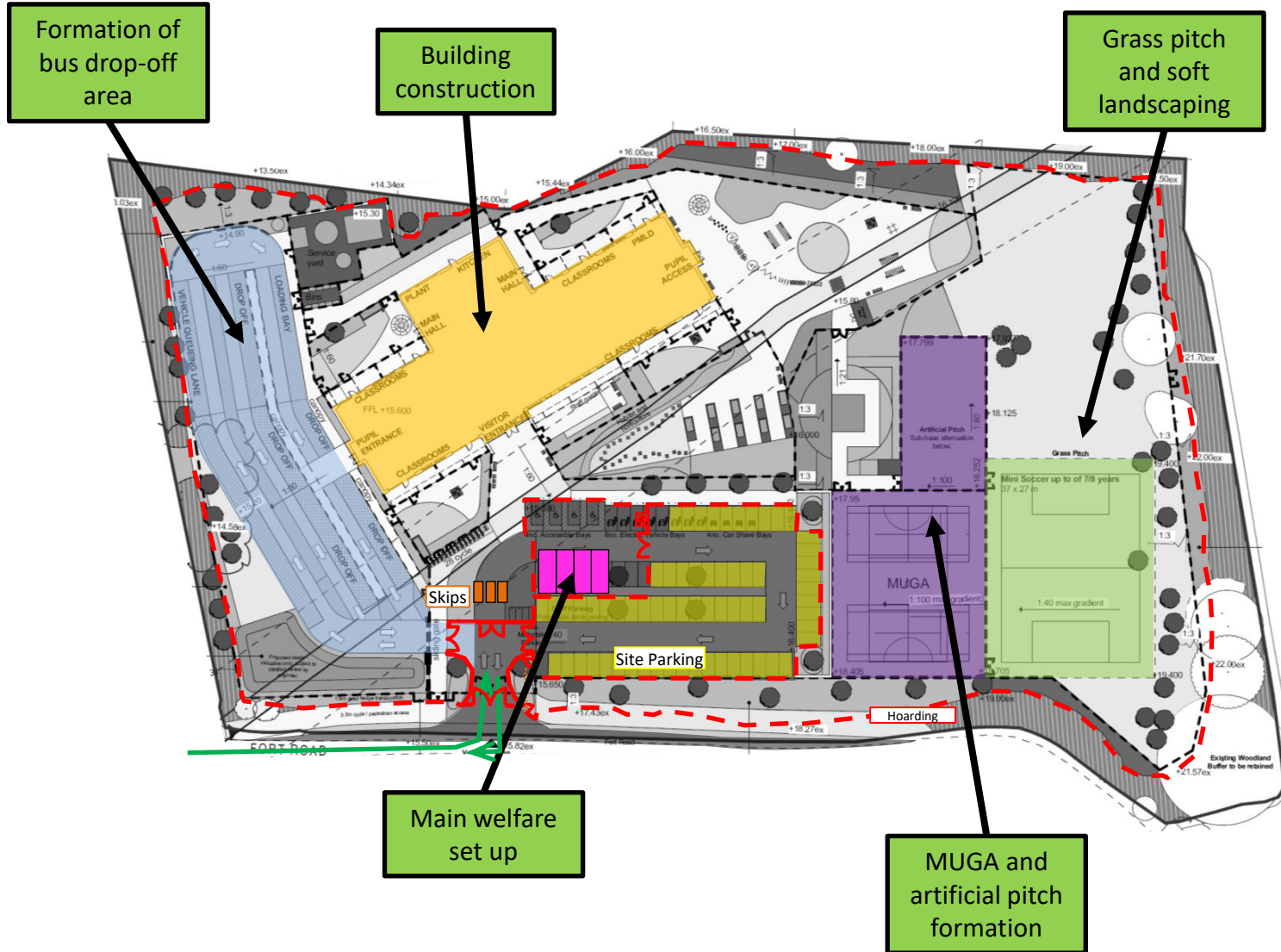


Date		08/03/22
Number	YYDE/Phase/-	Revision
		-

Ysgol Y Deri Expansion – Scheme Phasing

Notes

Part B: Main Build



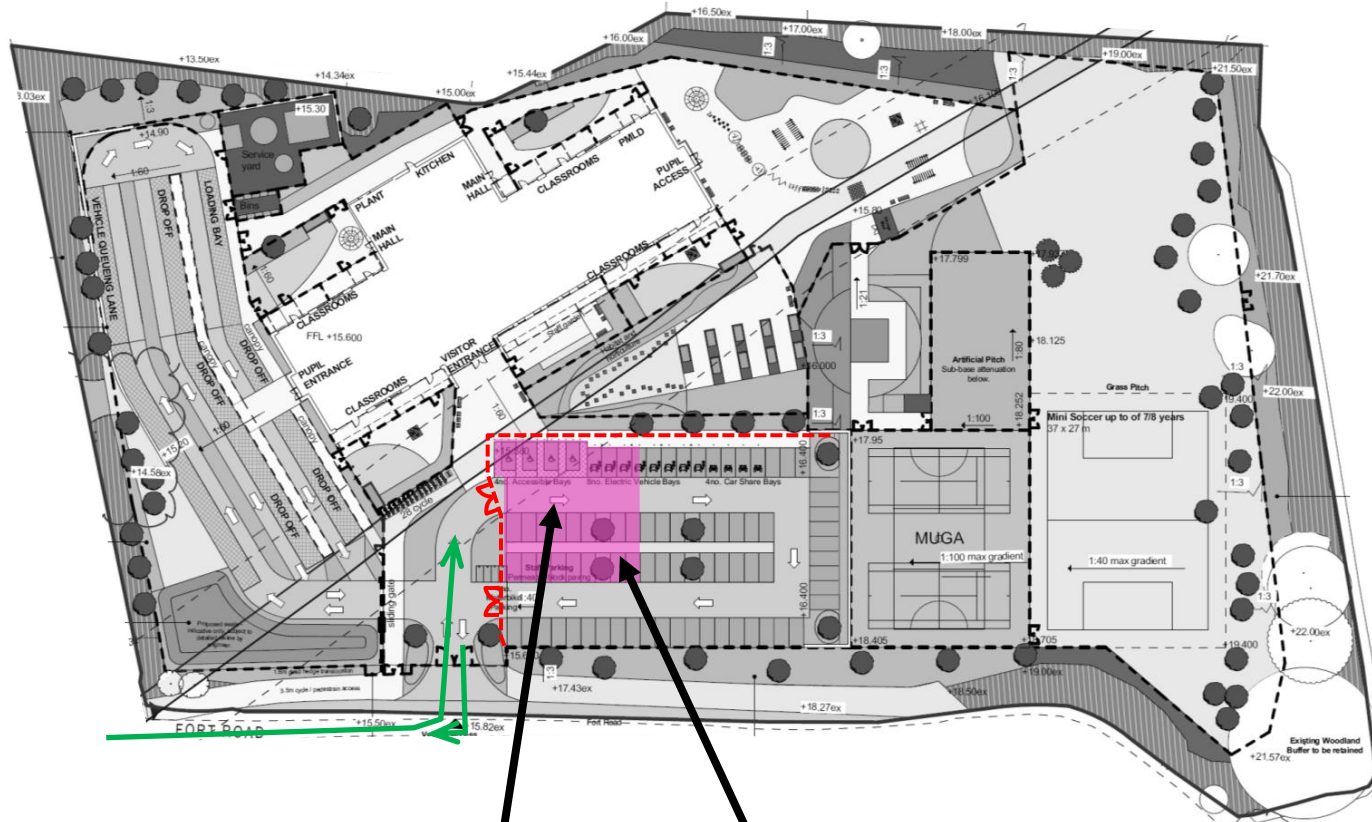
Rev	Date	Reason for Issue
-	24/01/22	Updated in line with new design, programme and build sequence.
-	08/03/22	Initial Issue



Date		08/03/22
Number	YYDE/Phase/-	Revision
		-

Ysgol Y Deri Expansion – Scheme Phasing

Part C: Decant & Completion



Main welfare set up removed

Completion of car park

Notes

Rev	Date	Reason for Issue
-	24/01/22	Updated in line with new design, programme and build sequence
-	08/03/22	Initial Issue

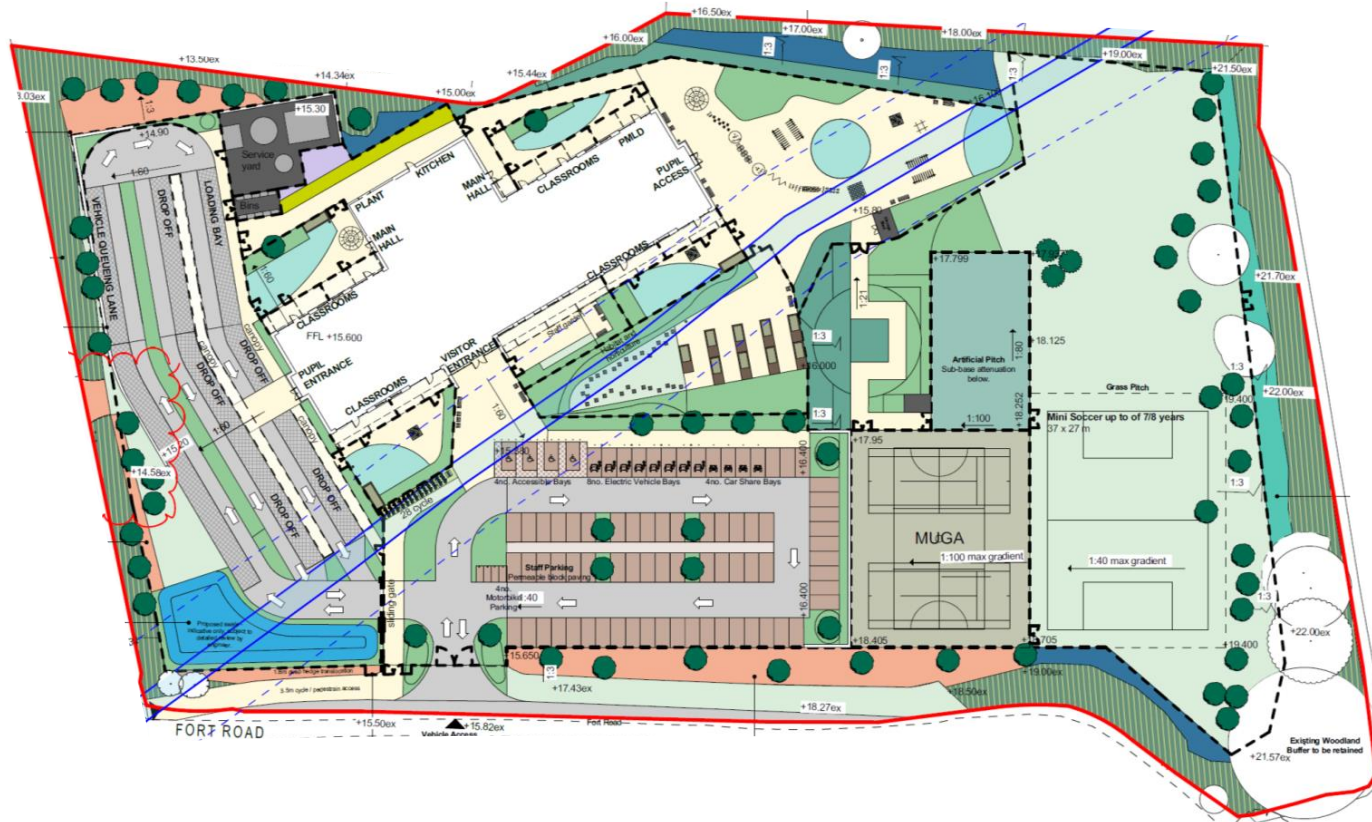


Date		08/03/22
Number	YYDE/Phase/-	Revision
		-

Ysgol Y Deri Expansion – Scheme Phasing

Notes

Completion



Final external layout

Rev	Date	Reason for Issue
-	24/01/22	Updated in line with new design, programme and build sequence
-	08/03/22	Initial Issue



Date
08/03/22

Number	Revision
YYDE/Phase/-	-