
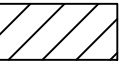
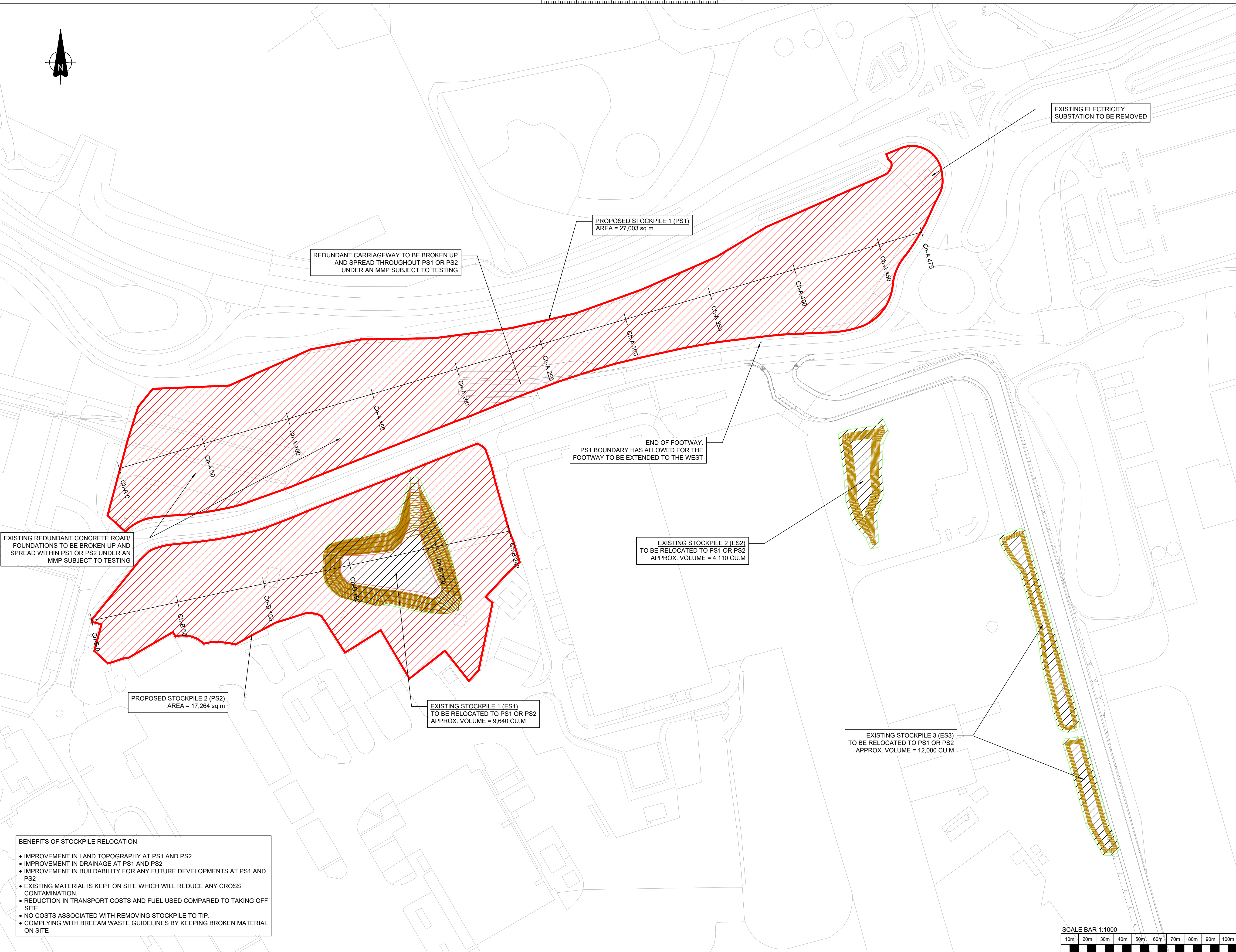
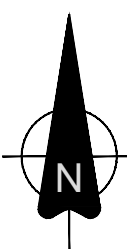


Project: LEVEL ASSESSMENT OF Y PORTH, BRO TATHAN

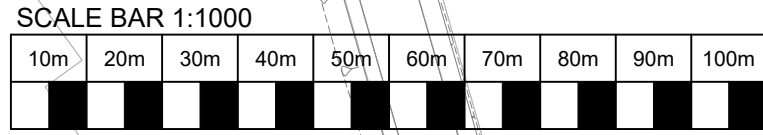
- NOTES:
1. LOCATION AND VOLUME OF STOCKPILES ARE APPROXIMATE PROVIDED BY WELSH GOVERNMENT LIDAR DATA FLOWN IN FEBRUARY 2021
 2. EXISTING TIMBER POST AND RAIL FENCE AROUND PS1 IS TO BE REMOVED, SET ASIDE AND RE-ERECTED FOLLOWING COMPLETION OF THE STOCKPILE RELOCATION WORKS.

- KEY:
-  AREA OF PROPOSED STOCKPILE
 -  EXISTING STOCKPILES TO BE RELOCATED

N:\50517-00 LEVEL ASSESSMENT OF Y PORTH, BRO TATHAN\01_DR\50517-BUR-XX-XX-DR-C-0001_GENERAL ARRANGEMENT.DWG



- BENEFITS OF STOCKPILE RELOCATION**
- IMPROVEMENT IN LAND TOPOGRAPHY AT PS1 AND PS2
 - IMPROVEMENT IN DRAINAGE AT PS1 AND PS2
 - IMPROVEMENT IN BUILDABILITY FOR ANY FUTURE DEVELOPMENTS AT PS1 AND PS2
 - EXISTING MATERIAL IS KEPT ON SITE WHICH WILL REDUCE ANY CROSS CONTAMINATION.
 - REDUCTION IN TRANSPORT COSTS AND FUEL USED COMPARED TO TAKING OFF SITE.
 - NO COSTS ASSOCIATED WITH REMOVING STOCKPILE TO TIP.
 - COMPLYING WITH BREEAM WASTE GUIDELINES BY KEEPING BROKEN MATERIAL ON SITE



S2/P1	ISSUED FOR PLANNING	13/10/22	RP	SL	RS
REV	DESCRIPTION	DATE	DRW	CHK	APP
Drawing Title: Y PORTH STOCKPILE LEVELS ASSESSMENT GENERAL ARRANGEMENT					
Burroughs Project No.:	50517	Scale:	1:1000	Original Paper Size:	A1
Drawing Number:	50517-BUR-XX-XX-DR-C-0001				
Status:	S2 - FOR INFORMATION				
Revision:	P1.0 - ISSUED FOR PLANNING				
This document is copyright of Burroughs Ltd. Use figured measurements only! DO NOT SCALE FROM DRAWING. Verify all dimensions prior to construction. Immediately report any discrepancies to Burroughs and if in doubt ASK. This drawing should be read in conjunction with all other associated project information					