

**THE SURVEY ASSOCIATION**  
 AZIMUTH GEO DATA AZIMUTH LAND SURVEYS  
 Ordnance Survey  
 www.azimuthgeodata.co.uk

**Abbreviations:**

|     |                      |
|-----|----------------------|
| PT  | Proposed floor level |
| EL  | Existing level       |
| BL  | Boundary line        |
| ... | ...                  |

**Notes:**

1. All heights are in metres unless otherwise stated.

2. All bearings are in degrees true unless otherwise stated.

3. All distances are in metres unless otherwise stated.

**ALS**  
 AZIMUTH LAND SURVEYS LIMITED  
 28 CARDIFF ROAD, NEWPORT, S.WALES, NP20 2ED, UK  
 e-mail: eng@azimuthgroup.co.uk  
 Tel: 01493 200079 Fax: 01493 213707

|                        |                                   |             |                                    |
|------------------------|-----------------------------------|-------------|------------------------------------|
| Cosmeston Farm Penarth |                                   |             |                                    |
| Topographical Survey   |                                   |             |                                    |
| WSP                    |                                   |             |                                    |
| Client                 | Plane Grid based on National Grid | Level Datum | Level Datum via Active GPS Network |
| Scale                  | 1:500@A0                          | Date        | Oct 2017                           |
| Drawn                  | A. J. R. R.                       | Checked     | C. J. Sullivan                     |
| Dep. No.               | WP329.01                          | Final       | WP329.01                           |

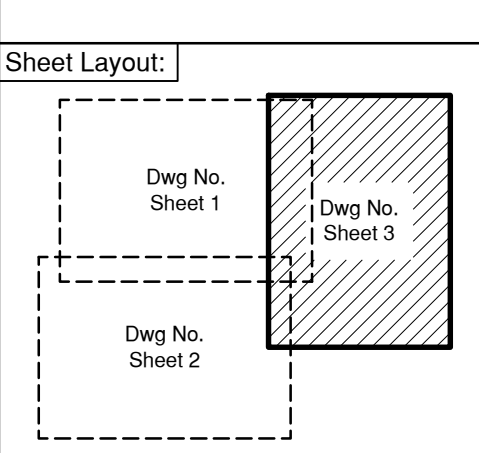
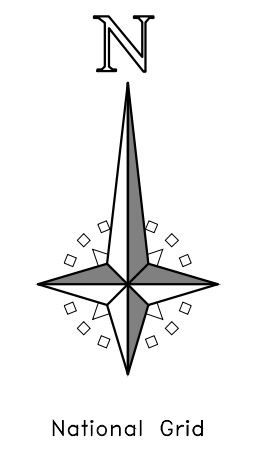








Scale 1:500  
 0 5 10 15 20 25 30  
 Distances in metres



**THE SURVEY ASSOCIATION**  
 AZIMUTH GEO DATA AZIMUTH LAND SURVEY

Abbreviations:

|       |          |       |          |
|-------|----------|-------|----------|
| 1:1   | As built | 1:1   | As built |
| 1:2   | As built | 1:2   | As built |
| 1:3   | As built | 1:3   | As built |
| 1:4   | As built | 1:4   | As built |
| 1:5   | As built | 1:5   | As built |
| 1:6   | As built | 1:6   | As built |
| 1:7   | As built | 1:7   | As built |
| 1:8   | As built | 1:8   | As built |
| 1:9   | As built | 1:9   | As built |
| 1:10  | As built | 1:10  | As built |
| 1:11  | As built | 1:11  | As built |
| 1:12  | As built | 1:12  | As built |
| 1:13  | As built | 1:13  | As built |
| 1:14  | As built | 1:14  | As built |
| 1:15  | As built | 1:15  | As built |
| 1:16  | As built | 1:16  | As built |
| 1:17  | As built | 1:17  | As built |
| 1:18  | As built | 1:18  | As built |
| 1:19  | As built | 1:19  | As built |
| 1:20  | As built | 1:20  | As built |
| 1:21  | As built | 1:21  | As built |
| 1:22  | As built | 1:22  | As built |
| 1:23  | As built | 1:23  | As built |
| 1:24  | As built | 1:24  | As built |
| 1:25  | As built | 1:25  | As built |
| 1:26  | As built | 1:26  | As built |
| 1:27  | As built | 1:27  | As built |
| 1:28  | As built | 1:28  | As built |
| 1:29  | As built | 1:29  | As built |
| 1:30  | As built | 1:30  | As built |
| 1:31  | As built | 1:31  | As built |
| 1:32  | As built | 1:32  | As built |
| 1:33  | As built | 1:33  | As built |
| 1:34  | As built | 1:34  | As built |
| 1:35  | As built | 1:35  | As built |
| 1:36  | As built | 1:36  | As built |
| 1:37  | As built | 1:37  | As built |
| 1:38  | As built | 1:38  | As built |
| 1:39  | As built | 1:39  | As built |
| 1:40  | As built | 1:40  | As built |
| 1:41  | As built | 1:41  | As built |
| 1:42  | As built | 1:42  | As built |
| 1:43  | As built | 1:43  | As built |
| 1:44  | As built | 1:44  | As built |
| 1:45  | As built | 1:45  | As built |
| 1:46  | As built | 1:46  | As built |
| 1:47  | As built | 1:47  | As built |
| 1:48  | As built | 1:48  | As built |
| 1:49  | As built | 1:49  | As built |
| 1:50  | As built | 1:50  | As built |
| 1:51  | As built | 1:51  | As built |
| 1:52  | As built | 1:52  | As built |
| 1:53  | As built | 1:53  | As built |
| 1:54  | As built | 1:54  | As built |
| 1:55  | As built | 1:55  | As built |
| 1:56  | As built | 1:56  | As built |
| 1:57  | As built | 1:57  | As built |
| 1:58  | As built | 1:58  | As built |
| 1:59  | As built | 1:59  | As built |
| 1:60  | As built | 1:60  | As built |
| 1:61  | As built | 1:61  | As built |
| 1:62  | As built | 1:62  | As built |
| 1:63  | As built | 1:63  | As built |
| 1:64  | As built | 1:64  | As built |
| 1:65  | As built | 1:65  | As built |
| 1:66  | As built | 1:66  | As built |
| 1:67  | As built | 1:67  | As built |
| 1:68  | As built | 1:68  | As built |
| 1:69  | As built | 1:69  | As built |
| 1:70  | As built | 1:70  | As built |
| 1:71  | As built | 1:71  | As built |
| 1:72  | As built | 1:72  | As built |
| 1:73  | As built | 1:73  | As built |
| 1:74  | As built | 1:74  | As built |
| 1:75  | As built | 1:75  | As built |
| 1:76  | As built | 1:76  | As built |
| 1:77  | As built | 1:77  | As built |
| 1:78  | As built | 1:78  | As built |
| 1:79  | As built | 1:79  | As built |
| 1:80  | As built | 1:80  | As built |
| 1:81  | As built | 1:81  | As built |
| 1:82  | As built | 1:82  | As built |
| 1:83  | As built | 1:83  | As built |
| 1:84  | As built | 1:84  | As built |
| 1:85  | As built | 1:85  | As built |
| 1:86  | As built | 1:86  | As built |
| 1:87  | As built | 1:87  | As built |
| 1:88  | As built | 1:88  | As built |
| 1:89  | As built | 1:89  | As built |
| 1:90  | As built | 1:90  | As built |
| 1:91  | As built | 1:91  | As built |
| 1:92  | As built | 1:92  | As built |
| 1:93  | As built | 1:93  | As built |
| 1:94  | As built | 1:94  | As built |
| 1:95  | As built | 1:95  | As built |
| 1:96  | As built | 1:96  | As built |
| 1:97  | As built | 1:97  | As built |
| 1:98  | As built | 1:98  | As built |
| 1:99  | As built | 1:99  | As built |
| 1:100 | As built | 1:100 | As built |

Notes:

1. All measurements are in metres unless otherwise stated.

2. All bearings are in degrees, minutes and seconds unless otherwise stated.

3. All distances are in metres unless otherwise stated.

4. All levels are in metres above sea level unless otherwise stated.

5. All contours are at 1m intervals unless otherwise stated.

6. All spot heights are in metres above sea level unless otherwise stated.

7. All boundary lines are shown in purple.

8. All existing buildings are shown in brown.

9. All existing roads are shown in red.

10. All existing drains are shown in blue.

11. All existing trees are shown in green.

12. All existing fences are shown in black.

13. All existing walls are shown in black.

14. All existing gates are shown in black.

15. All existing gates are shown in black.

16. All existing gates are shown in black.

17. All existing gates are shown in black.

18. All existing gates are shown in black.

19. All existing gates are shown in black.

20. All existing gates are shown in black.

**ALS**  
 AZIMUTH LAND SURVEYS LIMITED  
 28 CARDIFF ROAD, NEWPORT, SWALES, NP23 5ED, UK  
 e-mail: enquiries@azimuthgroup.co.uk Web: www.azimuthland-surveys.co.uk  
 Tel: 01493 280575 Fax: 01493 212107

|                           |                                   |             |                                     |
|---------------------------|-----------------------------------|-------------|-------------------------------------|
| Cosmeston Farm<br>Penarth |                                   | WSP         |                                     |
| Topographical Survey      |                                   | Level Datum |                                     |
| Client                    | Plane Grid based on National Grid | Level Datum | Level Datum via Active GPS Networks |
| Scale                     | 1:500 (A3)                        | Date        | Oct 2017                            |
| Surveyed                  | A. Joffe                          | Status      | Final                               |
|                           | Drawn                             | Checked     | R. Williams                         |
|                           |                                   | Dep. No.    | WP329.01                            |