

1 Existing Site Plan
1 : 2500

— site boundary
— Welsh Government landholding

No.	Description	Drawn	Checked	Date Issued
1	Issue for comment	TE	TE	10.01.19
2	Issue for comment	TE	TE	12.08.19
3	Issue for comment	TE	TE	12.08.19
4	Issue for comment	TE	TE	12.08.19
5	Issue for comment	TE	TE	12.08.19
6	Issue for comment	TE	TE	12.08.19
7	Issue for comment	TE	TE	12.08.19
8	Issue for comment	TE	TE	12.08.19
9	Issue for comment	TE	TE	12.08.19
10	Issue for comment	TE	TE	12.08.19

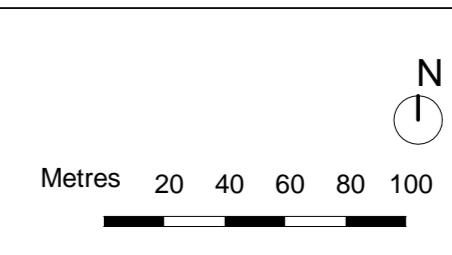
DO NOT SCALE. Use digital dimensions only. This drawing is intended to show dimensions before the work is set out. Plans shall be drawn to the correct scale and dimensions.

This drawing must only be used for the purposes for which it is intended and the user must ensure that the drawing is used for the correct purpose and is not used for any other purpose.

© cardiff@austinsmithlord.com
Drawing and made possible by:
Austen-Smith Lord LLP using AutoCAD 2018

Drawn: TE
Date: 02.05.19
Scale: IP AD 1 : 2500
Status: SD

TE Austen-Smith Lord LLP
Architects, Designers, Planners
Landscape Architects
Civil Engineers
Cardiff
CF11 1ESN
T +44 (0)2920 225 208
© cardiff@austinsmithlord.com



Austen-Smith:Lord
Project: Upper Farm Cothorgan

Description: Existing Site Plan

Job No.	Drawing No.	Revision
318254	LFC_ASD_03_03_C01_A_0000	