



Creation of extension reedbed/swales throughout EIA site, providing new habitat for protected/notable species and facilitate their continued dispersal across the site

Creation of wetland habitats increasing opportunities for protected/notable species and providing biodiversity gain

Creation of extension reedbed/swales throughout EIA site, providing new habitat for protected/notable species and facilitate their continued dispersal across the site

Maintenance/enhancement of wildlife links north to south through the EIA line

New planting to reinforce existing hedgerow and woodland boundaries, maintaining integrity and strengthening wildlife corridors

Orchard providing further benefits to recreation and biodiversity whilst promoting links to nature

Public rights of way sensitively located along existing infrastructure to minimise habitat loss and maintain integrity of habitat

Retention of existing woodland with minimal breaks to facilitate construction of a link road

Allotments – further diversifies recreational opportunities enhancing health and well being of a new community

Creation of wetland habitats in compensation for loss of arable land, increasing opportunities for protected/notable species and providing biodiversity gain

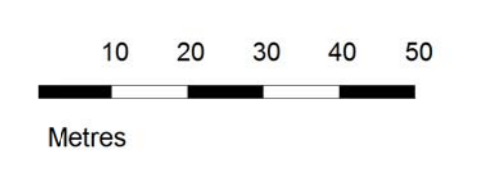
Public rights of way sensitively located along existing infrastructure to minimise habitat loss and maintain integrity of habitat

Maintenance/creation of wildlife links east to west along northern boundaries of EIA site

Maintenance/creation of wildlife links east to west along southern boundaries of EIA site

Nature Play

Enhancement and supplementary planting of existing hedgerow to strengthen the ecological network and facilitate dispersal of protected species north to south



KEY

NEAP	1000 m <sup>2</sup>
LEAP	3x 400 m <sup>2</sup>
LAP	4x 100 m <sup>2</sup>
Retained hedgerow	29 600 m <sup>2</sup>
New hedgerow	10 300 m <sup>2</sup>
Grass/meadow, orchards or allotments	19 600 m <sup>2</sup>
Private gardens soft landscape	25 000 m <sup>2</sup>
Wetland habitat: SuDS swales and infiltration basins	24 100 m <sup>2</sup>
Water & Wetland habitat: Attenuation pond (surface area)	2000 m <sup>2</sup>
Dormouse crossing point utilising existing and proposed tree canopies	
New habitat connections	
Retained mature tree	
Pedestrian passages designed for unobstructed wildlife movement	

Rev	Description	Author	Check	Date Issued
1	Issue for comment	TS	TS	20/11/22
2	Issue for comment	TS	TS	20/11/22
3	Issue for comment	TS	TS	20/11/22
4	Issue for comment	TS	TS	20/11/22

**1** Parameter Plan - Green Infrastructure  
1: 1000

Drawn: TS  
Date: 02.05.19  
Scale: A1  
Status: SD  
© Austin-Smith:Lord  
Drawing No: 318254

**Austin-Smith:Lord**  
Project: Upper Farm Cotham  
Description: Parameter Plan - Green Infrastructure  
Job No: 318254  
Drawing No: 0933  
Revision: 0000