

Legend

- - - Site boundary.
- Soft Landscape**
- Proposed new trees
All to be double staked. Where planted in grass, to include a 1200mm diameter of bark mulch of 50mm depth.
For tree pit detail refer to :- LPS-STL-XX-XX-DR-L-9404
- Proposed ornamental shrub mix- 3-5ltr pots planted within 300mm topsoil & 300mm subsoil with 50mm bark mulch dressing
Refer to dwg :- LPS-STL-XX-XX-DR-L-9005 for details.
Kitchen Gardens, raised timber sleeper planters, to be provided with soil in readiness for planting school pupils
For details refer to :- LPS-STL-XX-XX-DR-L-9402
- Grass Seed for sport pitches.
Emorsgate Seeds EG22 – Strong Lawn Grass Mixture at 25g/m² over cultivated topsoil / subsoil profile
- Grassed slopes, banking to accommodate level changes or bioretention areas. To engineers details. Embankment to be sown with Emorgate Wildflower seed mix EP1F _ seed for wet margins & ditches sown at 2g/ sq.m
- Seeded grass for general areas.
Emorsgate Seeds EG22c – Strong Lawn Grass Mixture with Clover at 25g / sq.m
- Habitat area to east, west & southern boundary. Retention of existing ditches and grading of soils as required to tie into sit elevels. Disturbed areas to be sown with Emorsgate _EM3 Special General Purpose Meadow Mixture at 4g / sq.m over cultivated soil bed.
- Proposed Rain Garden Planting
1-2ltr pots planted with bio-retention soil as per Engineers Specification.
Refer to dwg :- LPS-STL-XX-XX-DR-L-9005 for details.
Land drain - refer to Engineers details

NOTE:
• Refer to Landscape Specification Sections Q28, Q31 and Q35

Tree Schedule

Selected standard trees, double staked with timber posts and adjustable rubber tie. Top dress rootball (1.0m diameter) with bark mulch 50mm depth over 300mm topsoil and 600mm subsoil as per tree pit detail within soft landscape areas.

Species	Girth	Clear Stem (C/S) Feathered (F)	Total No.
Acer campestre	14-16cm	C/S to 1.8m high	2
Alnus glutinosa	14-16cm	C/S to 1.8m high	3
Betula pendula	14-16cm	C/S to 1.8m high	2
Prunus padus	14-16cm	C/S to 1.8m high	2
Quercus robur	14-16cm	C/S to 1.8m high	1
Sorbus aucuparia	14-16cm	C/S to 1.8m high	1
Total:			11

Topsoil and Subsoil depths in accordance with British Standard BS 3882:2015

The depth of topsoil spread should not normally exceed 300mm. Suitable (loosened) subsoil should provide the remainder of the minimum rooting depth.

WILDFLOWER : 300mm subsoil
GRASS:450mm depth (consisting of 300mm topsoil and 150mm subsoil)

SHRUBS and HEDGES: 600mm depth (consisting of 300mm topsoil and 300mm subsoil)

TREES: 900mm depth (consisting of 300mm topsoil and 600mm subsoil)

Prior to spreading topsoil, the receiving area should be de-compacted to increase permeability.

PROPOSED SWALE
Bio - retention area as per Engineers Specification. Depression to be sown with Emorgate Wildflower seed mix EP1F _ seed for wet margins & ditches sown at 2g/ sq.m

Banks of swale to be sown with Emorsgate Seed Mix _EM3 Special General Purpose Meadow Mixture

INFILTRATION BASIN / WETLAND DEPRESSION
Bio - retention area as per Engineers Specification, Embankment and depression to be sown with Emorgate Wildflower seed mix EP1F _ seed for wet margins & ditches sown at 2g/ sq.m

STATUS	REV	DATE	DESCRIPTION
S4	P38	07/01/21	Bird Box to building eastern elevation changed
S4	P37	05/01/21	Revised planting to address LPA Ecology comments
S4	P35	07/12/20	Revised drawings issued to respond to clients comments and engineers layouts
PL	PL12	07/09/20	Design coordination generally
PL	PL11	24/08/20	Extend Pavement to 3m
PL	PL10	03/07/20	For Planning
P	P34	05/06/20	Updates to grassed areas specification.
P	P33	27/05/20	1st Draft Tender Drawings for Review
PL	PL09	28/04/20	Planning Issue Updates.

CLIENT: **Vale of Glamorgan Council** REVISION: HX

CHECKED BY: GMK

ORIGINATOR NO: 152855

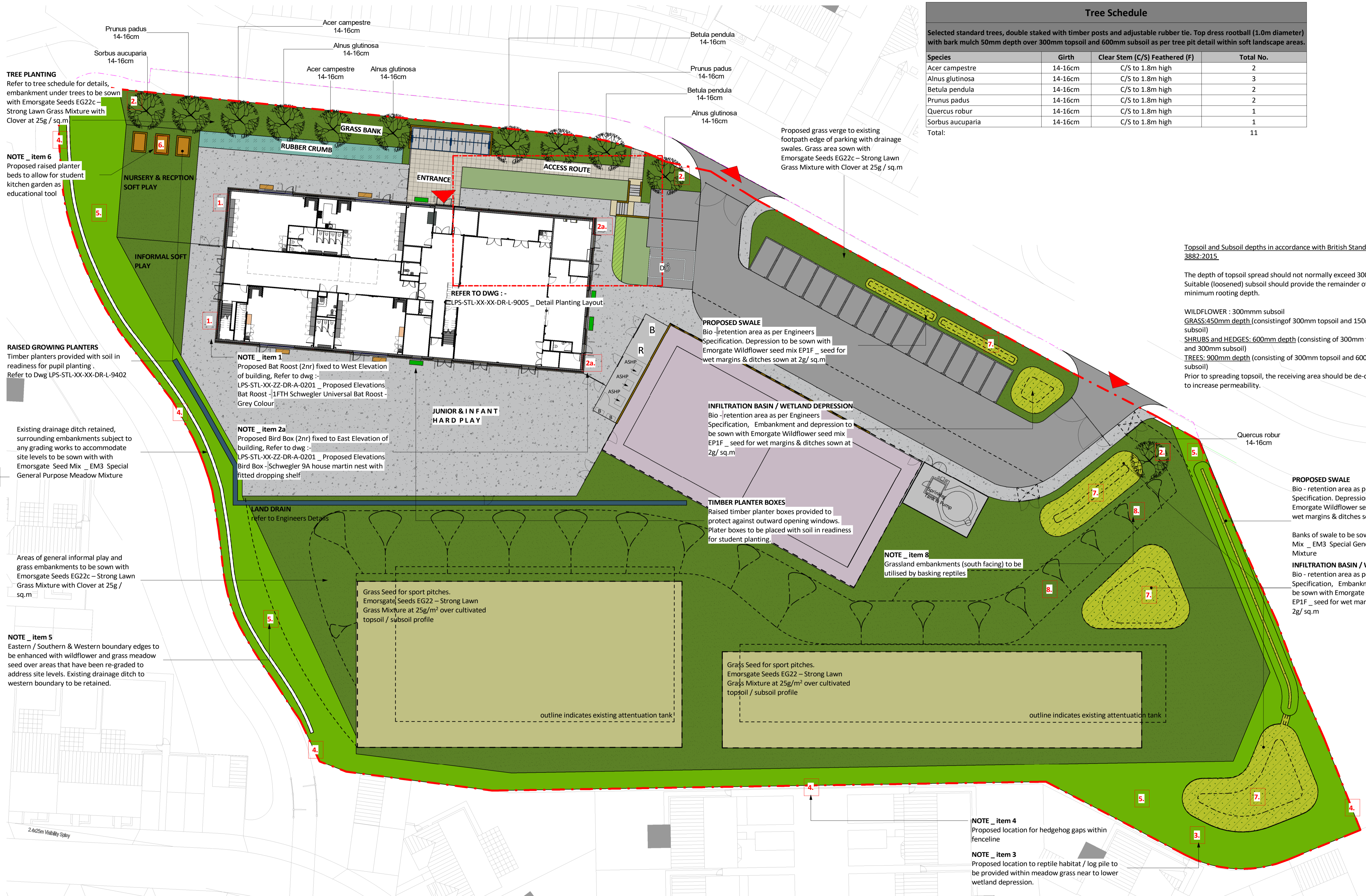
CONSULTANT: **STRIDE TREGLOWN**
www.stridetreglow.com © Stride Treglow Limited 2018

PROJECT: **Llancarfan Primary School in Rhose**

DRAWING TITLE: **Soft Landscape Plan**

SUITABILITY STATUS: **S4 : SUITABLE FOR STAGE APPROVAL** SCALE: **As indicated 1:250 @ A1**

PROJECT | ORIGINATOR | ZONE | LEVEL | TYPE | ROLE | CLASS | NUMBER | REVISION: **LPS-STL-XX-XX-DR-L-9003 P38**



TREE PLANTING
Refer to tree schedule for details, embankment under trees to be sown with Emorsgate Seeds EG22c – Strong Lawn Grass Mixture with Clover at 25g / sq.m

NOTE _ item 6
Proposed raised planter beds to allow for student kitchen garden as educational tool

RAISED GROWING PLANTERS
Timber planters provided with soil in readiness for pupil planting. Refer to Dwg LPS-STL-XX-XX-DR-L-9402

Existing drainage ditch retained, surrounding embankments subject to any grading works to accommodate site levels to be sown with with Emorsgate Seed Mix _EM3 Special General Purpose Meadow Mixture

Areas of general informal play and grass embankments to be sown with Emorsgate Seeds EG22c – Strong Lawn Grass Mixture with Clover at 25g / sq.m

NOTE _ item 5
Eastern / Southern & Western boundary edges to be enhanced with wildflower and grass meadow seed over areas that have been re-graded to address site levels. Existing drainage ditch to western boundary to be retained.

NOTE _ item 1
Proposed Bat Roost (2nr) fixed to West Elevation of building. Refer to dwg :- LPS-STL-XX-ZZ-DR-A-0201 _ Proposed Elevations Bat Roost -1FTH Schwegler Universal Bat Roost - Grey Colour

NOTE _ item 2a
Proposed Bird Box (2nr) fixed to East Elevation of building. Refer to dwg :- LPS-STL-XX-ZZ-DR-A-0201 _ Proposed Elevations Bird Box -Schwegler 9A house martin nest with fitted dropping shelf

PROPOSED SWALE
Bio -retention area as per Engineers Specification. Depression to be sown with Emorgate Wildflower seed mix EP1F _ seed for wet margins & ditches sown at 2g/ sq.m

INFILTRATION BASIN / WETLAND DEPRESSION
Bio -retention area as per Engineers Specification, Embankment and depression to be sown with Emorgate Wildflower seed mix EP1F _ seed for wet margins & ditches sown at 2g/ sq.m

TIMBER PLANTER BOXES
Raised timber planter boxes provided to protect against outward opening windows. Planter boxes to be placed with soil in readiness for student planting.

NOTE _ item 8
Grassland embankments (south facing) to be utilised by basking reptiles

Grass Seed for sport pitches.
Emorsgate Seeds EG22 – Strong Lawn Grass Mixture at 25g/m² over cultivated topsoil / subsoil profile

Grass Seed for sport pitches.
Emorsgate Seeds EG22 – Strong Lawn Grass Mixture at 25g/m² over cultivated topsoil / subsoil profile

NOTE _ item 4
Proposed location for hedgehog gaps within fence line

NOTE _ item 3
Proposed location to reptile habitat / log pile to be provided within meadow grass near to lower wetland depression.

Ecological Recommendations for Enhancements
(Outlined in AECOM Ecological Appraisal Report)

1. Provision of 2nr bat boxes fixed to western building elevation _ 1FTH Schwegler Universal Bat Roost - grey colour
2. Provisions of 3nr bird boxes secured to newly planted trees _ RSPB Classic Nestbox
- 2a. Provisions of 2nr bird boxes secured to eastern building elevation _ Schwegler 9A House Martin Nest with fitted dropping shelf
3. Provision of a reptile log pile connected with habitat area.
4. Proposed gaps provided in fence line for hedgehogs - 150mm opening
5. Enhancement of habitat corridor along site boundary with wildflower and meadow meadow grass. Area to be excluded of light fittings / spillage.
6. Provision of kitchen garden for pupils as part of educational or recreation purposes.
7. Provision of wetland areas (as part of SUDS) with introduction of wildflower species.
8. Creation of grassland areas / banks for basking reptiles. -south facing