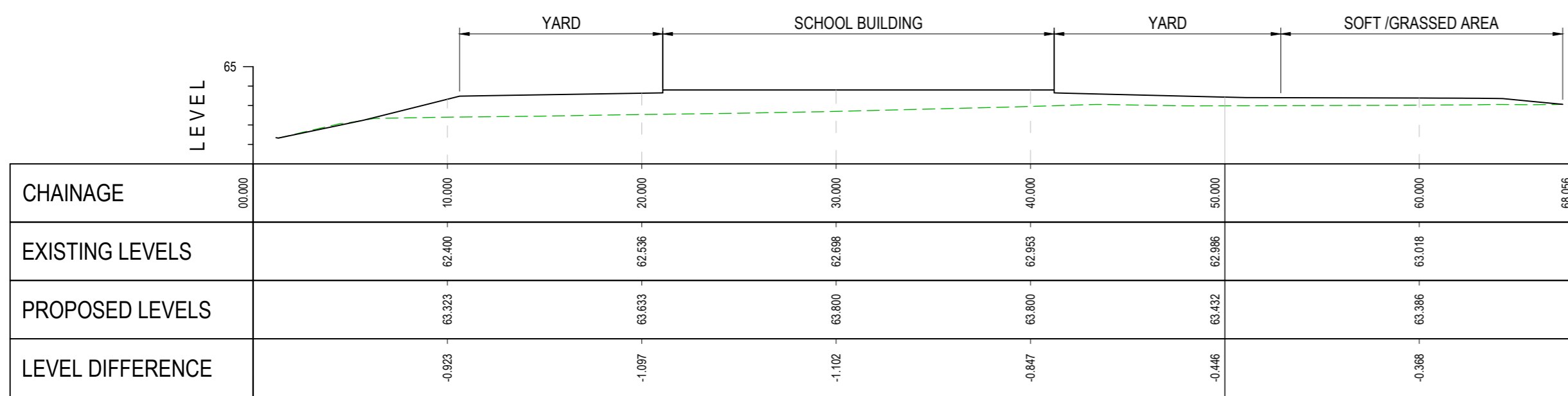
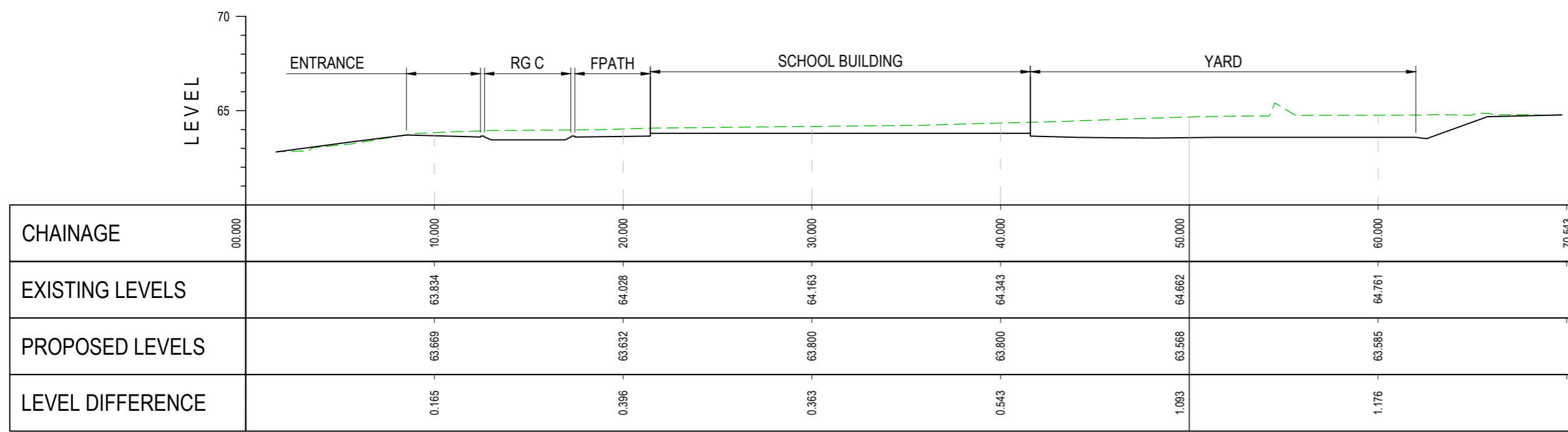


DESIGN NOTES:

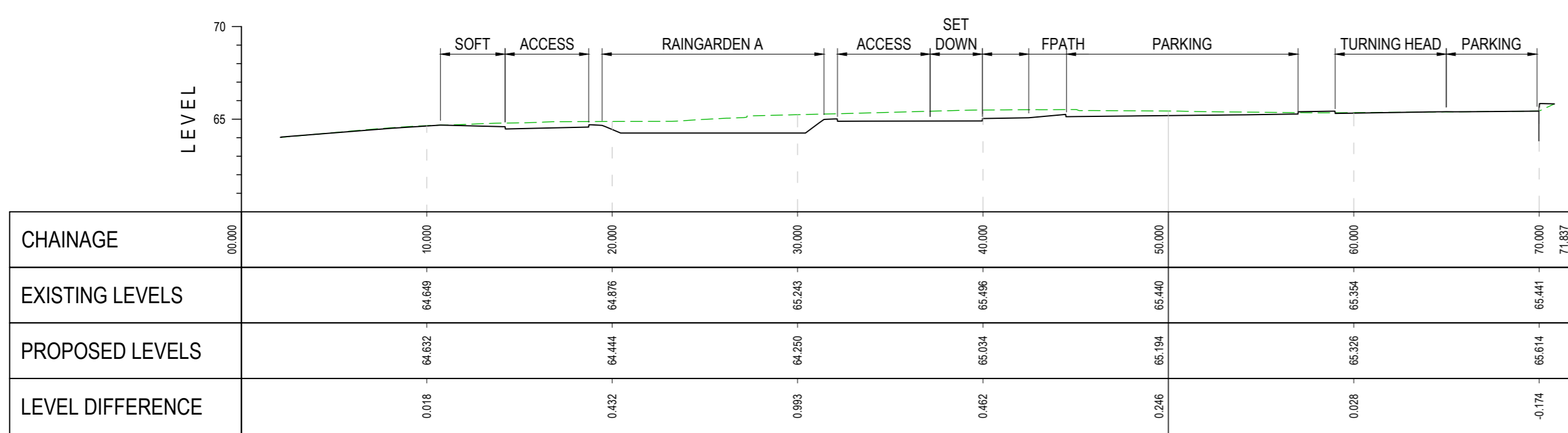
1. This drawing is to be read in conjunction with all other RWV Consulting Ltd. project drawings and specifications.
2. All levels are in metres above ordnance datum based on the topographical survey drawing supplied by the Client.
3. All dimensions are in millimetres unless stated otherwise.
4. Do not scale from this drawing, use figured dimensions only.



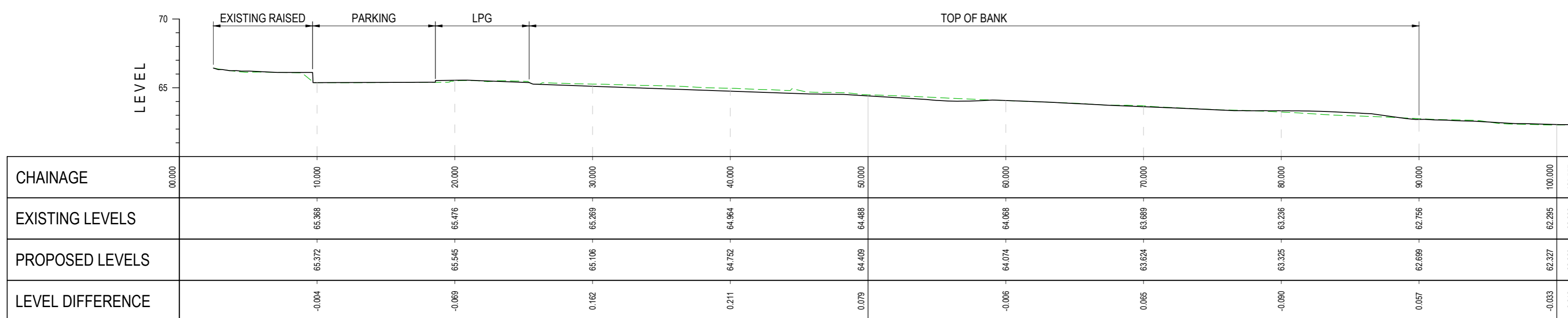
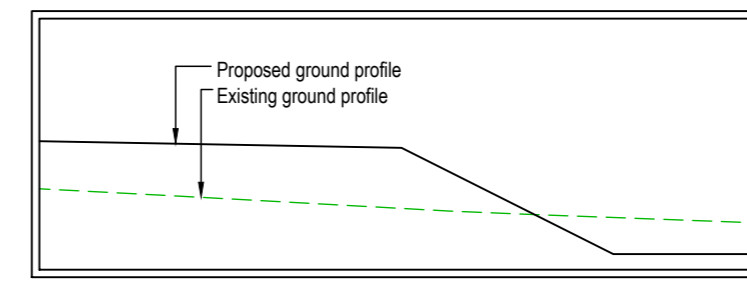
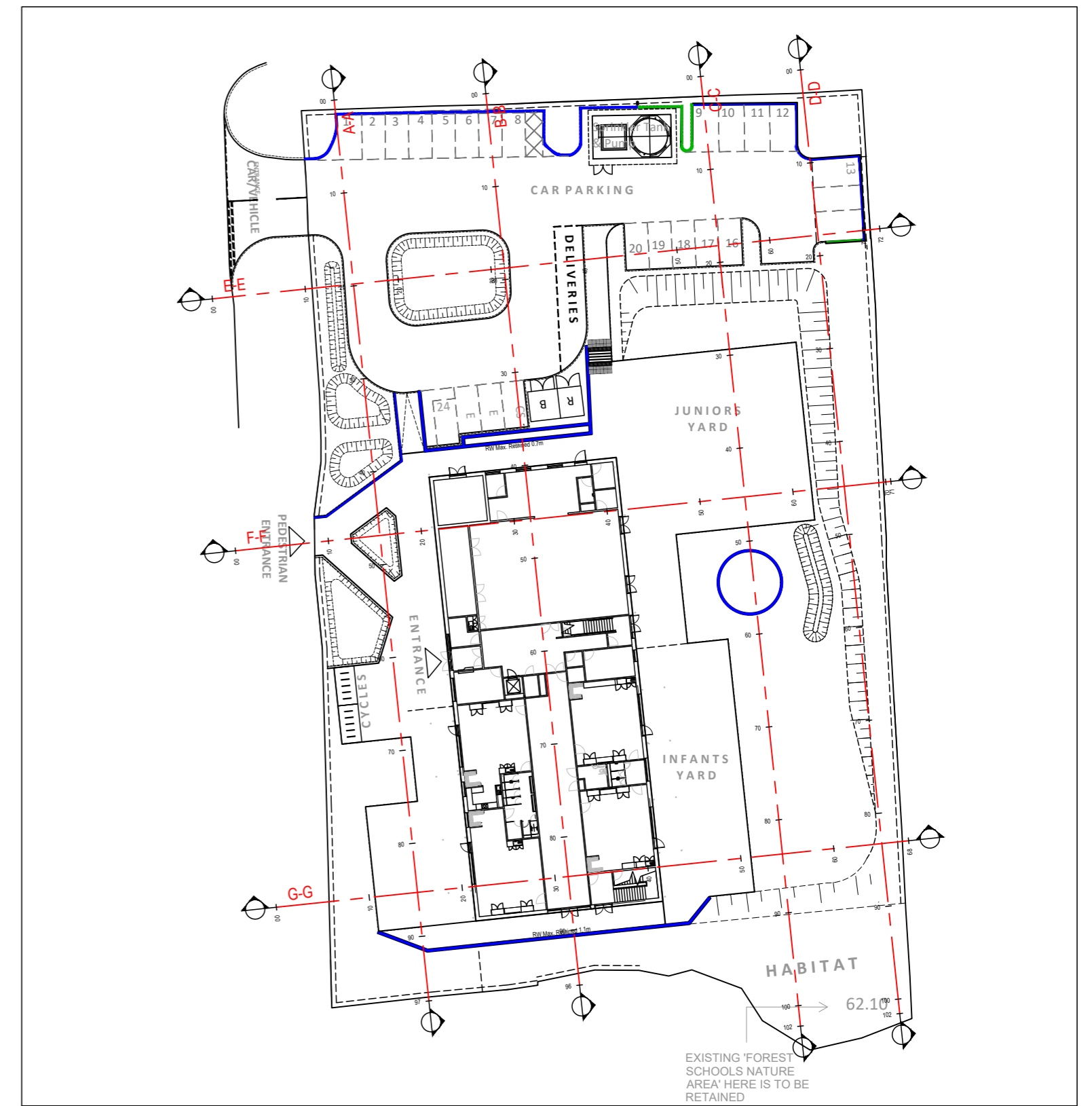
G-G
SCALE: H 1:250, V 1:250. DATUM: 60.000



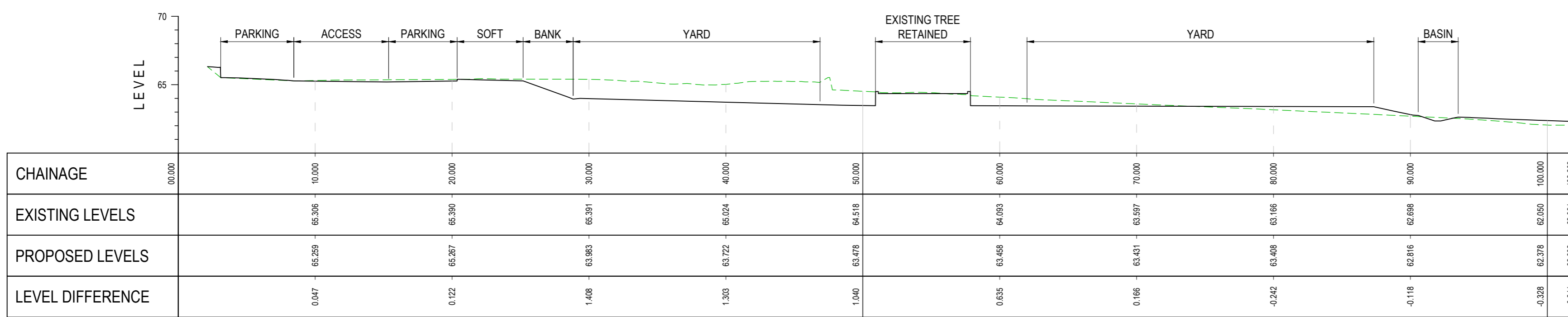
F-F
SCALE: H 1:250, V 1:250. DATUM: 60.000



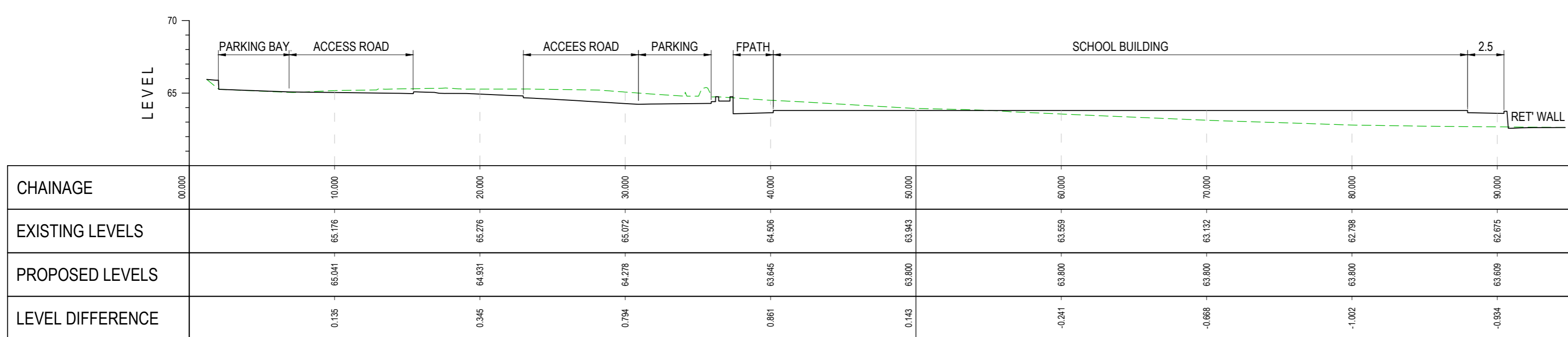
E-E
SCALE: H 1:250, V 1:250. DATUM: 60.000



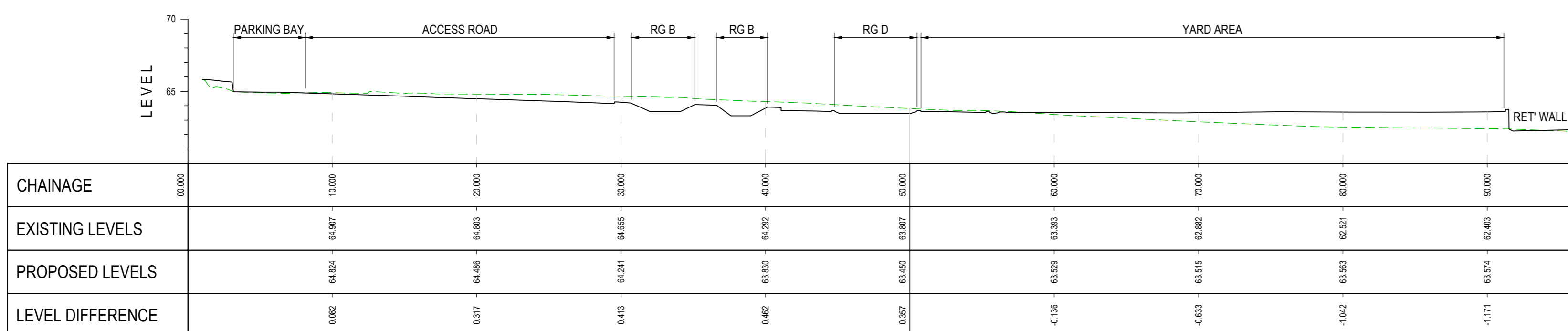
D-D
SCALE: H 1:250, V 1:250. DATUM: 60.000



C-C
SCALE: H 1:250, V 1:250. DATUM: 60.000



B-B
SCALE: H 1:250, V 1:250. DATUM: 60.000



A-A
SCALE: H 1:250, V 1:250. DATUM: 60.000

Rev.	Date	Details	By	Chk.
P2	06.04.20	LPG compound removed, barriers to north of junior yard and east of school altered, levels updated. Section C-C, D-D & E-E updated	DRW	ABP

RWV CONSULTING
 6 NEPTUNE COURT
 VANGUARD WAY
 OCEAN PARK
 CARDIFF CF24 5PJ
 T. 029 20461000
 F. 029 20460799
 www.rvwconsulting.co.uk

Project: **St. David's Church in Wales Primary School**
 Title: **External Works Profiles**
 Drawn: DRW Checked: DRW Scale(s) at A1: 1:250
 Date: 02.04.20 RWV Job N°: C6906 Revision: P2 Suitability: S0
 Drawing Status: **PRELIMINARY**
 Drawing N°: **SDPS-RVV-ZZ-00-DR-C-3000**