



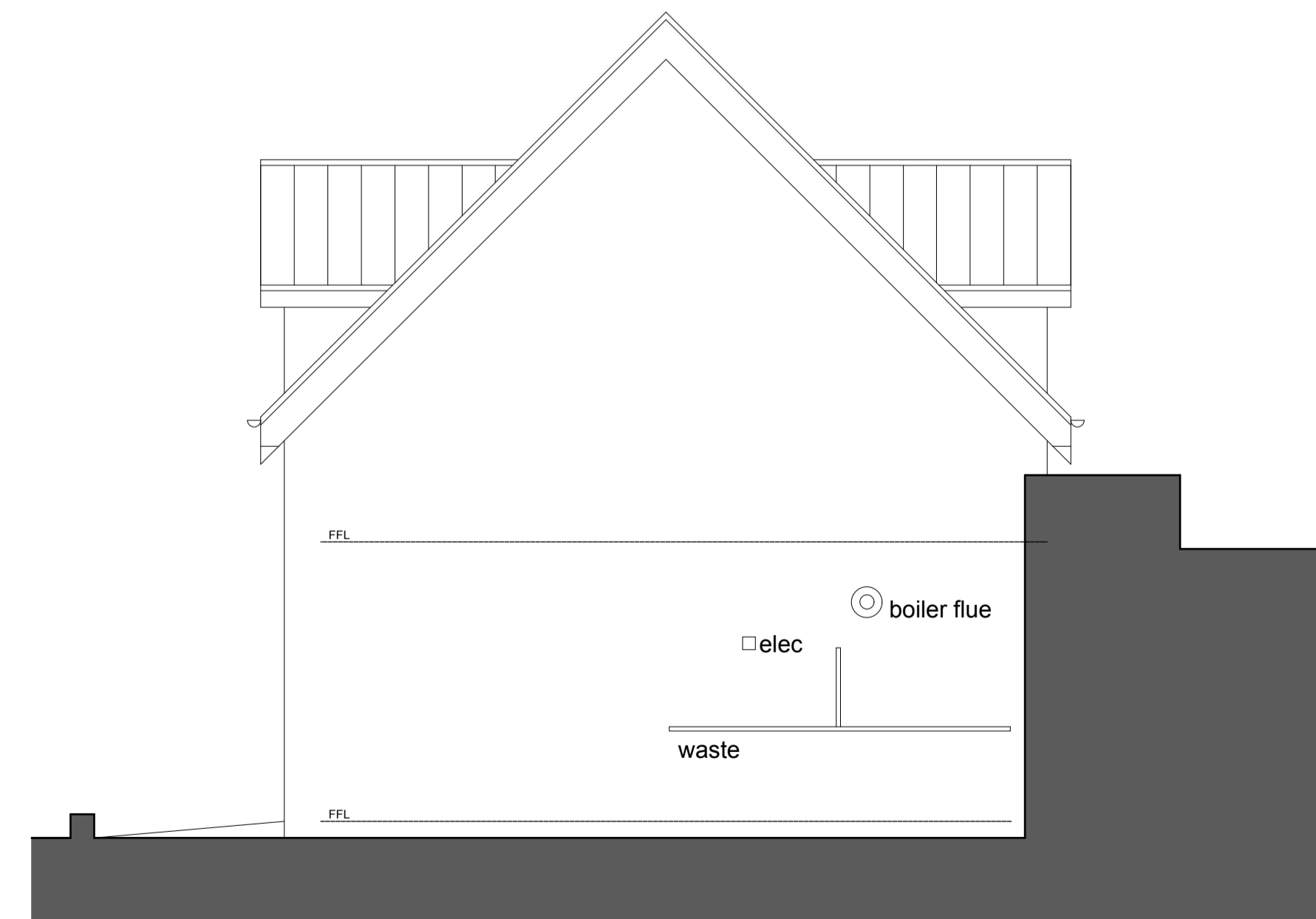
FRONT ELEVATION




SIDE ELEVATION



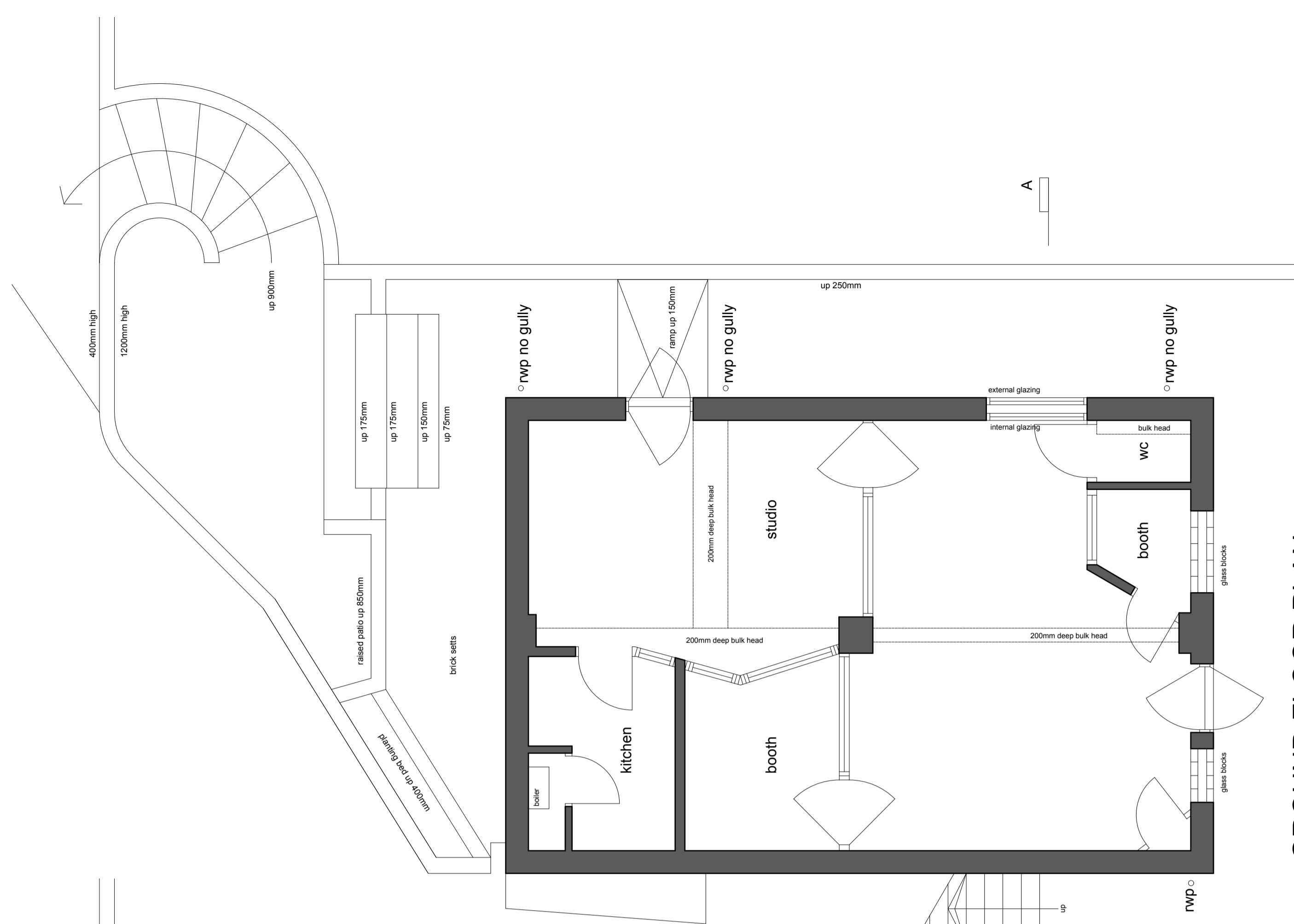
SIDE ELEVATION



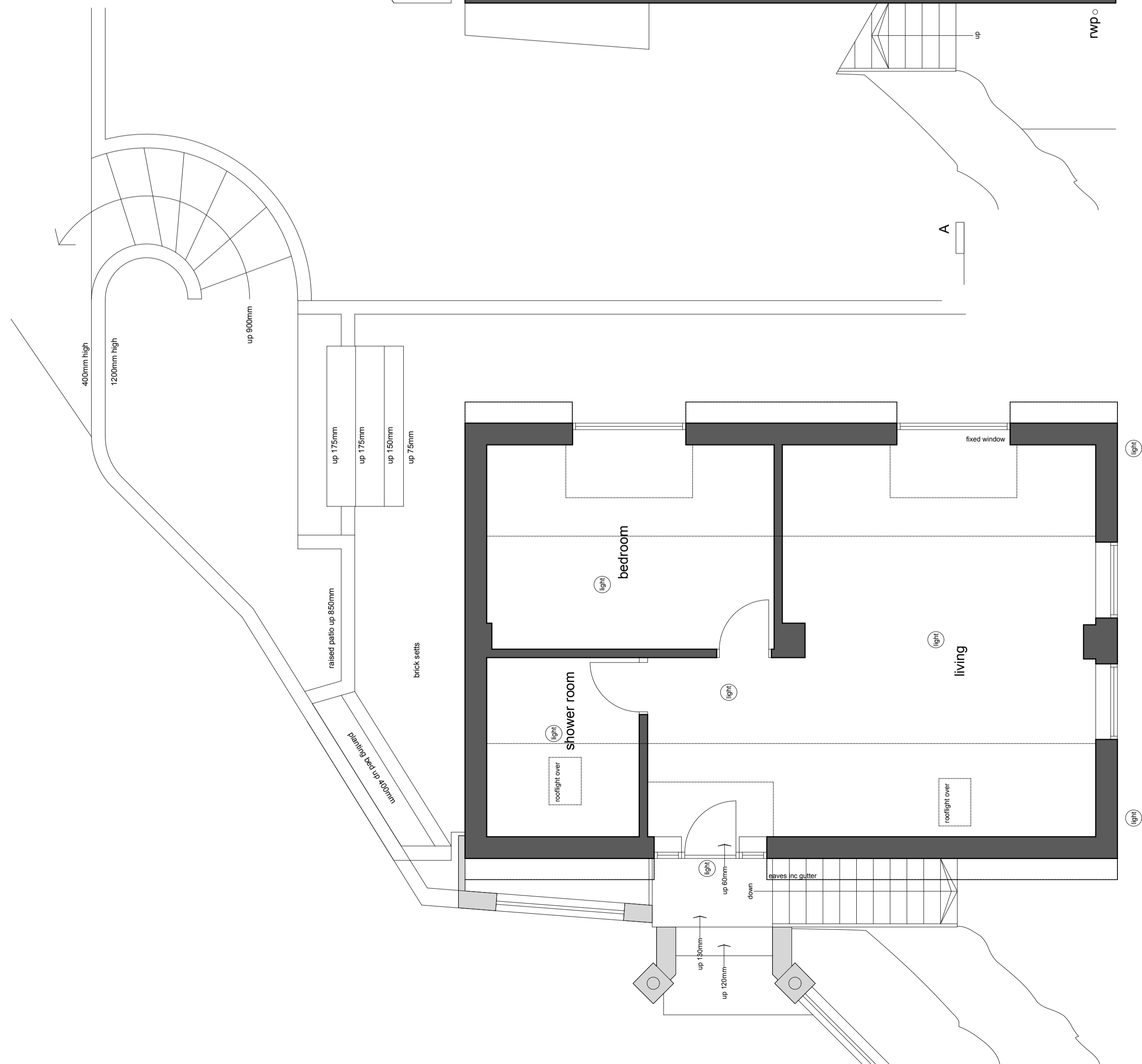
REAR ELEVATION

 **George and Co.**
 Proposed change of use
 The Spinney, Twyncyn,
 Dinas Powys
 CF64 4AS

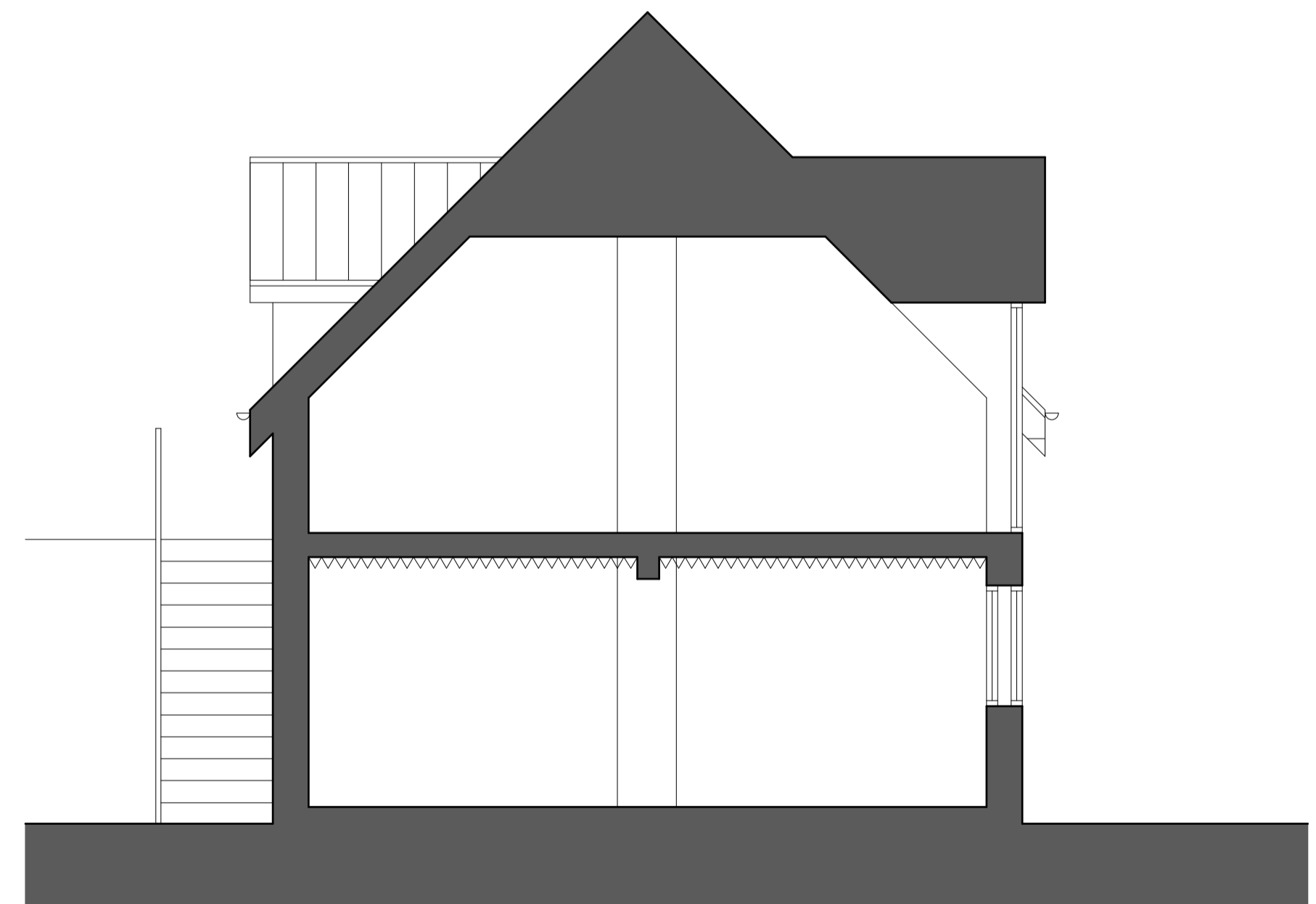
636.01	Existing
planning application	1:50@A1 June '19 SG
1st Floor Woodfired Studios 62 High St Merthyr Tydfil CF37 8DE 07830328652 hello@georgeandco.studio www.georgeandco.studio	
DO NOT SCALE THIS DRAWING	©George and Co.



GROUND FLOOR PLAN



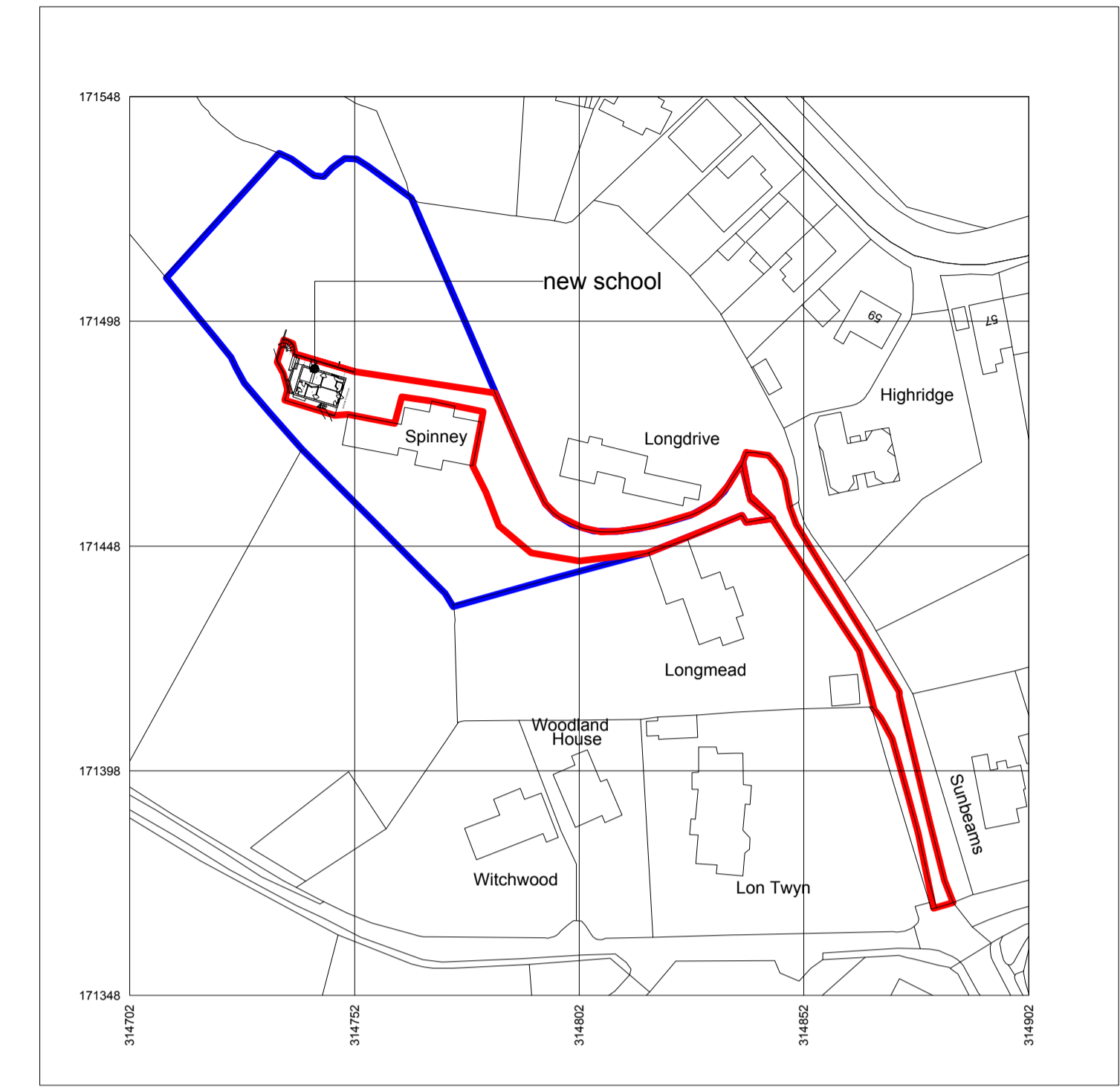
FIRST FLOOR PLAN



SECTION A-A

OSMAP 1:1250

Produced on 13 June 2019 from the Ordnance Survey National Geographic Database and incorporating surveyed revision available at this date.
 This map shows the area bounded by 314702,171348 314702,171548 314902,171548 314902,171348
 Reproduction in whole or part is prohibited without the prior permission of Ordnance Survey.
 Crown copyright 2019. Supplied by copla ltd trading as UKPlanningMaps.com a licensed Ordnance Survey partner (100054135).
 Data licenced for 1 year, expiring 13 June 2020. Unique plan reference: v4c/358347/486771



George and Co.
 Proposed change of use
 The Spinney, Twyncyn,
 Dinas Powys
 CF64 4AS

636.02	Existing
planning application	1:50@A1 June '19 SG
1st Floor Woodfired Studios 62 High St Merthyr Tydfil CF37 8DE 07830328652 hello@georgeandco.studio www.georgeandco.studio	
DO NOT SCALE THIS DRAWING	©George and Co.