

3.2.2. Initial Concepts

The plans were then developed into two options which took on board the above points, whilst keeping the original spirit of the scheme.

Option 1 Layout



Circulation as learning opportunities



Modern Dining Experience



Classrooms with Integrated ICT & Storage

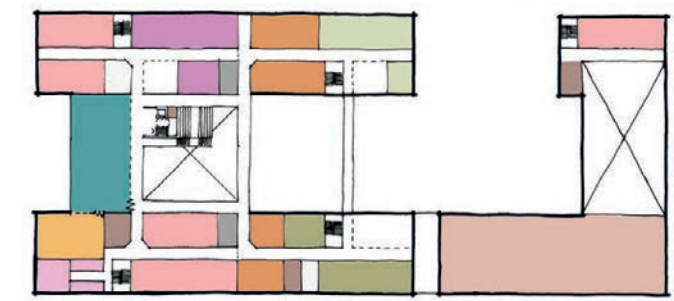
- CBE
- SEN
- SPORTS HALL
- DT
- COURTYARD
- COURTYARD OPENING INTO FIELD
- MAIN HALL
- SIXTH FORM
- MAIN STAIRCASE
- DINING
- D&T
- KITCHEN
- PLANT
- STAFF & RECEPTION
- STORE
- ENGLISH
- IT
- SCIENCE
- MUSIC
- GENERAL TEACHING
- CHANGING ROOMS
- RESOURCE CENTRE
- DRAMA



Ground Floor



Second Floor



First Floor

Option 2 Layout



Opportunities everywhere to learn

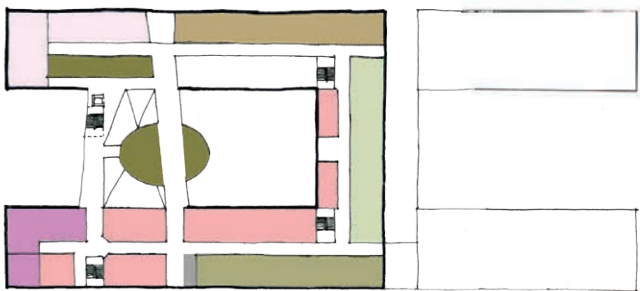


Community use

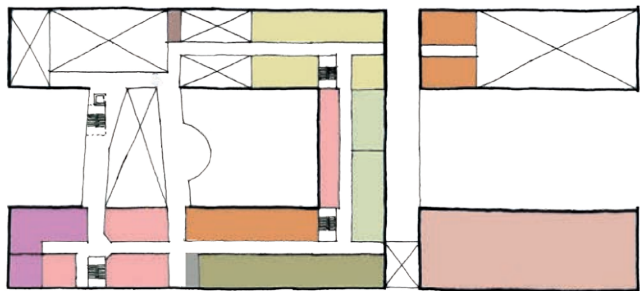


Engaging environment

- CBE
- SEN
- SPORTS HALL
- DT
- COURTYARD
- COURTYARD OPENING INTO FIELD
- MAIN HALL
- SIXTH FORM
- MAIN STAIRCASE
- DINING
- D&T
- KITCHEN
- PLANT
- STAFF & RECEPTION
- STORE
- ENGLISH
- IT
- SCIENCE
- MUSIC
- GENERAL TEACHING
- CHANGING ROOMS
- RESOURCE CENTRE
- DRAMA



Second Floor



First Floor

2.2.4 Engaging with the stakeholders

Engagement Structure

A structured consultation process has taken place with the Vale of Glamorgan's 21st Century Schools team and the school's Heads, following the process overleaf. There have also been a number of additional meetings to gather the views of other stakeholders.

To date, consultation has taken place with the following:

- › The school Senior Management Team (SMT)
- › Local Authority and key consultees
- › Heads of department
- › SBD Liaison officer

The following are planned to take place over the next six weeks:

- › Student School Council
- › All students through assembly presentations
- › Local residents
- › Parents
- › Councillors

The design team and representatives from the VoG 21st Century Schools team met with the Heads regularly throughout the early development of the design, generally on a weekly basis, in order to capture the key briefing criteria. We began by exploring the vision and the key relationships of the school, progressing through to the site drivers and access strategies and the on to the more detailed space planning and adjacencies.

Following on from each meeting with the SMT, feedback sessions to the wider Local Authority team were held in order to ensure that every element of the progressing design met the wider aspirations of the authority and the 21st Century Schools agenda. The development of the detailed educational brief continued through a series of workshops held with the existing school Heads of Department.

Student sessions, both through Student Council and through assemblies, are planned in the near future.

A drop-in consultation session will be organised at the school to provide the opportunity for teachers, parents, local residents and councillors to attend and learn more about the design.

Summary of Scheme Evolution








The vast majority of the design development has been through regular meetings with the school senior management team following the consultation process above, the design was refined and adapted to best suit the needs of the school and wider community. This included the following examples;

- › Site access/buses/deliveries; the location of the bus drop-off for both schools has been extensively discussed to ensure minimal disruption to either school, both in the temporary and permanent condition.
- › The school were keen to mitigate the risk to pedestrians by separating the main pedestrian access routes from the access for cars and service vehicles, and as such the new path from the north was formalised.
- › Sports provision; the provision of sports facilities within the new school building has developed considerably during the consultation process with the school and head of department. Dry and wet changing facilities have now been provided with a configuration that suits both school and community use.
- › Main entrance arrangement; the design has incorporated a visitors entrance, in addition to the main student access doors. The student entrance was also widened and a longer reception desk added, for the provision of access to student services facilities. This was in response to issues raised during both the SMT meetings the Heads of Department meetings.
- › ALN provision; the configuration of this area has been adjusted to reflect the needs of the school and is subject to further

consultation with the VoG team.

Other areas of significant change involved the following aspects of the design;

- › Car Parking and deliveries
- › Dining and catering
- › Music & Drama, including the location and orientation of the main hall and stage
- › SMT offices
- › Science department
- › Design Technology (DT) department

	Engagement 01	Engagement 02	Engagement 03	Engagement 04	Engagement 05	Engagement 06	Engagement 07
	Review of Concept and Morgan Sindall Proposals.	Concept development, technical / environmental strategies and Organisation.	Detailed Layouts /elevations, materials and landscaping.	Stratergies / finalisation of design.	Technical review	Finalisation of information to compete RIBA Stage 3	Sign off of RIBA Stage 3 proceed to Planning Application
							
AGENDA	Team introductions Process. Summary Review of Vision and Ethos . Review of Control Option Planning Context Schedule of Accomodation Building Organisation and Adjacencies Initial Design Concepts Community Benefits Strategy Other stakeholder engagements and 3rd parties. Risk Register review	<i>(Feedback from Engagement 01)</i> Masterplan Development Schedule of Accomodation Update Design Concept Development Initial internal layouts and organisation Elevations Approach and Materials Landscape Design Environmental Principles BREEAM	<i>(Feedback from Engagement 02)</i> Finalisation of Masterplan Design Concept Development Internal Layout & Organisation Design Strategies Elevational ideas & Materials Landscape Design Planning Cost update Feedback from other engagements / stakeholders Risk register review	<i>(Feedback from Engagement 3)</i> Internal Layout Finalisation Access and Circulation Strategy Zoning & Security Strategy Passive Supervision Strategy Fire Strategy Acoustic Strategy Catering Provision Toilets and Changing Provision Interior Design Strategy Development of Elevations & Materials ICT Strategy	<i>(Feedback from Engagement 04)</i> Building Fabirc & Structure Environmental Engineering Design Sustainability Strategy Daylight Review Phasing and Construction FF&E Co-ordination BREEAM Review	<i>(Feedback from Engagement 5)</i> Presentation of the Design proposals, plans elevations sections and visuals Presentation of Environmental Design Construction phase programme Landscaping Proposals Outline specification Elemental cost plan / affordability Risk register review	<i>(Feedback from engagement 6)</i> Approval of Design proposals ready for planning application Formalisation of the costplan / sign off Planning of next Phase RIBA stage 4 Deliverables and procurement schedule
PRESENTATION MATERIAL	Analysis of School Brief Initial Massing studies Adjacency diagrams Present / initialise Human Centred Design Application Stakeholder engagement plan	Initial concept layouts Schedule of Accomodation agreed Organisational Diagrams Adjacencies Digrams Landscape proposals (soft and hard) Environmental and sustainability Principles	Initial strategy diagrams Developed Building Plans Concept Sections and Elevations Room layouts of key spaces Developed Landscaping Proposals Intial ICT Principles	Review detailed Layouts GA's Review detail design strategy and materials Discuss interior design proposals Review elevations and External Views 3D visualisation Sections Day in the life of the pupil Feedback from other stakeholder meetings	Review environmental and sustainability proposals Outline specification Structural engineering principles Room Layouts Construction logistic Plan Elevations and sections review	Proposed final Masterplan Proposed Final design information Final environmental strategies Cost plan Programme	Proposed final Masterplan Proposed Final design information Final environmental strategies Cost plan Programme
MILESTONES	Confirm Understanding of vision and Brief Agree Faculty Structure Agree Building Organisation Refine Schedule of Accomodation Agree Site Organisation	Agree preferred site masterplan option Sign off of the SOA Discuss Building LAYOUTS Discuss Initial Landscaping Proposals Discuss Environmental Proposals Agree FF+E Strategy	Agree building layouts Discuss Design Strategies Discuss Room Layouts - Key spaces Agree Elevational and materials concept Planning feedback BREEAM review Community Benefits Programme	Review detailed Layouts GA's Review detail design strategy Discuss interior design proposals Review elevations and External Views 3D visualisation Sections	Review environmental engineering proposals and sustainability strategy Agree access and circulation strategies Agree detailed room layouts (3D)	Review all of RIBA Stage 3 design information Deliverability Confirmation Affordability Confirmation BREEAM Review Full Business Case review Risk Register Review	Review all of RIBA Stage 3 design information Deliverability Confirmation Affordability Confirmation BREEAM Review Full Business Case review

3.3. Design Proposals

Site Plan Key

1. New Building
2. Courtyard
3. All Weather Pitch
4. MUGAs
5. Grass Pitches
6. Car Park
7. Social and Informal area
8. Bus drop off
9. Caretaker's House



Level 0 Plan

- [illegible]

Level 1 Plan

- 6th Form
- Catering & Toilet Facilities
- Circulation
- Dining & Social Areas
- Drama
- English
- Halls
- History
- IT
- Languages
- Learning Resource Areas
- Music
- RE
- Riser
- Staff & Administration
- Storage (Non-Teaching)
- Storage (Teaching)
- Welsh



Level 2 Plan

- Art
- Catering & Toilet Facilities
- Circulation
- General Teaching
- Geography
- Halls
- Learning Resource Areas
- Maths
- Plant/Support
- Riser
- Science
- Staff & Administration
- Storage (Non-Teaching)
- Storage (Teaching)

