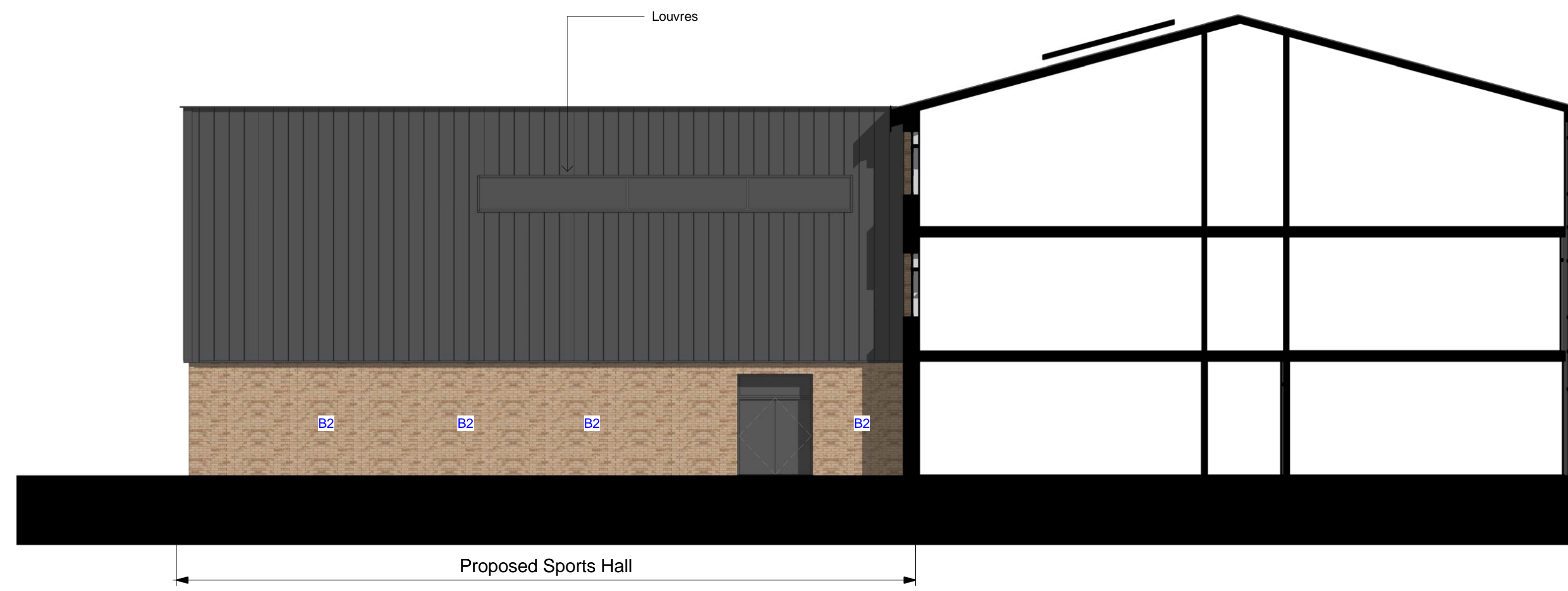
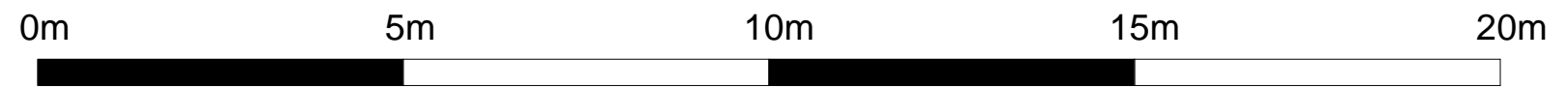
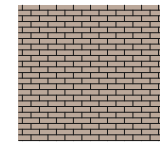
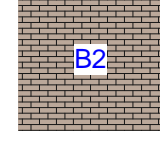
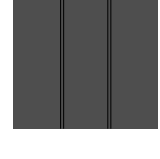
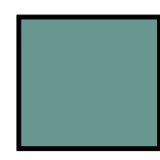

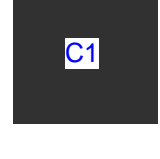


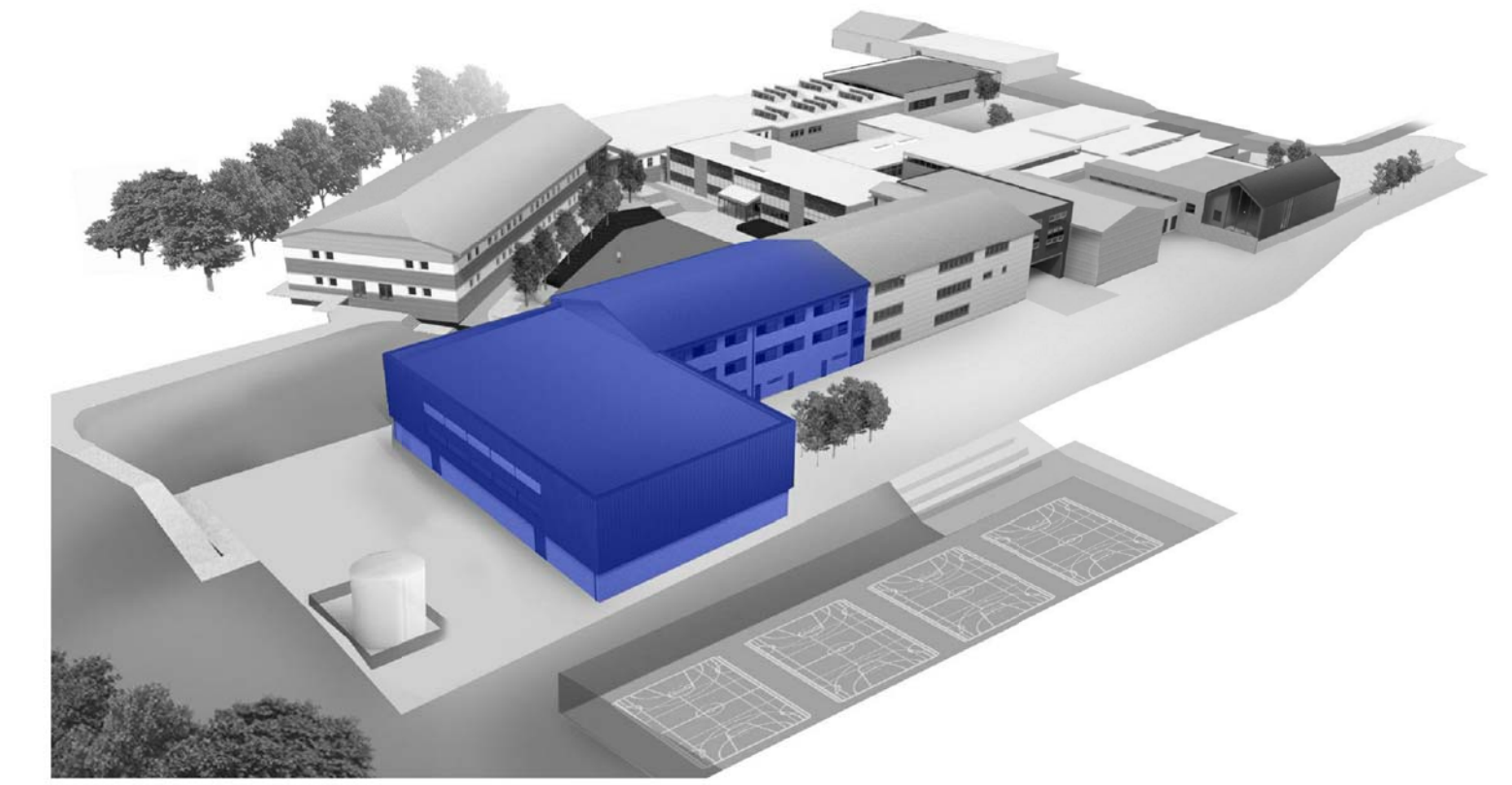
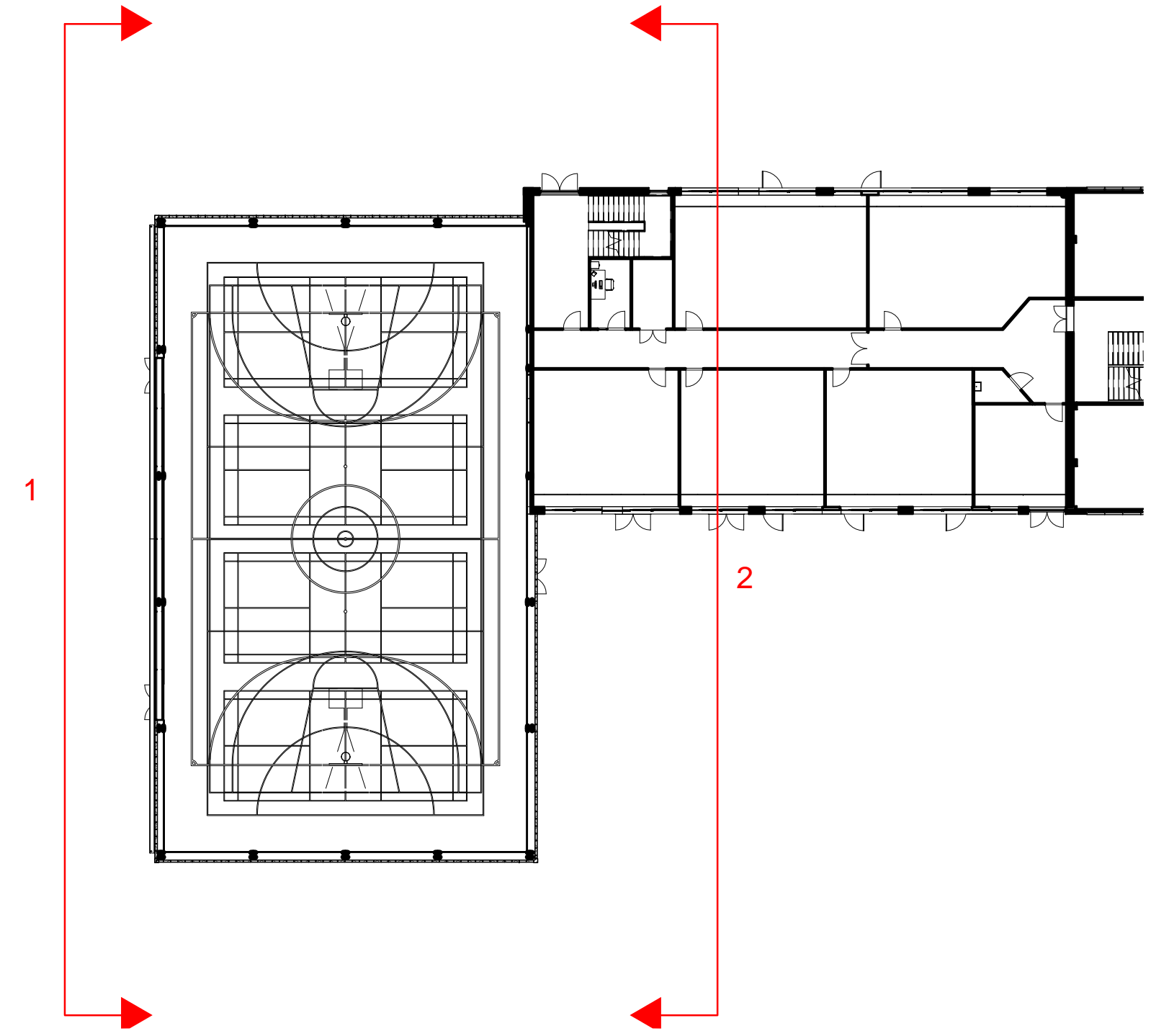
1 Sports, IT & Business Block - West
1:100



2 Sports, IT & Business Block - East
1:100



-  **External Brick Wall on SFS**
102mm Brickwork, 50mm cavity,
70mm Kingspan K112 Insulation,
Siniat Weather Defence Board, 150mm SFS Layer with
Mineral Wool Insulation Between Studs, air tight membrane
Wall to achieve U-Value of 0.16
-  **External Brick Wall on Block**
102mm Brickwork, 90mm cavity, Two Layers (50mm + 60mm)
Kingspan K108 Insulation, Breather membrane, 140mm internal block
leaf. Two Part Wall Ties to Structural Engineers Specification.
Wall to achieve U-Value of 0.16
-  **Standing Seam Cladding**
Euroclad Vieo 25_454 Standing Seam
Aluminium Sheet Fixed Vertically to
Kingspan Benchmark Wall Liner Panels
(125mm Core Thickness) on Cladding Rails to
Specialist Sub-Contractor Design.
Build up to Achieve 0.16 U-Value
-  Glazing: Refer to Window Schedule
-  Spandrel Panel: Refer to Spandrel Panel
-  **C1**
Rockpanel Xtreme 9mm thick mineral fibre rainscreen panels
fixed to aluminium profiles using colour head rivets at
maximum 600mm ctrs. Rockpanel fixed back to aluminium
subgrid on helping hand brackets. 120mm thk K15 insulation
and vapour control layer to cavity. All fixed to weather
defence board and SFS. Mineral wool infill to SFS with
plasterboard lining and airtightness membrane to inner face.



Rev	Description	Drawn	Checked	Date Issued
01	Issue	JUL		04/12/18
02	Approved Following Feedback from V&G	JUL		13/12/18
03	Stage 2 Draft Issue	JUL		11/01/19
04	Draft PAC Issue	JUL		18/01/19
05	PAC Issue	JUL		25/01/19
06	General Updates - Spec	JUL		01/03/19

DO NOT SCALE. Use figured dimensions only.
The contractor is requested to check all
dimensions before the work is put in hand.
© All copyrights Austin-Smith Lord LLP
This drawing must only be used for the purpose
for which it is supplied and its contents must not
be reproduced for any purpose without written
permission.
No areas indicated, or areas calculated from this
drawing should be used for valuation purposes
or as the basis for development contracts.
Austin-Smith Lord LLP is a limited liability
partnership registered in England & Wales.
Number OC315362

Drawn	JJ	Austin-Smith:Lord LLP Architects Designers Planners Landscape Architects
Date	JAN 2019	Port Of Liverpool Building Pier Head, Liverpool L3 1BY t +44 (0)151 227 1083
Scale @ A1	As indicated	
Status	S2	e liverpool@austinsmithlord.com Drawings and models generated by Austin-Smith Lord LLP BIM using Autodesk Revit

Austin-Smith:Lord
Project: Ysgol Bro Morgannwg
Description: Proposed Sports, IT & Business Block Elevations Sheet 2

Job No.	Drawing No.	Revision	P6
318052	YBM-ASL-30-ZZ-DR-A-0254		