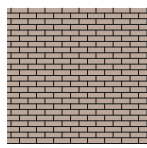
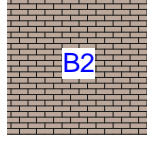




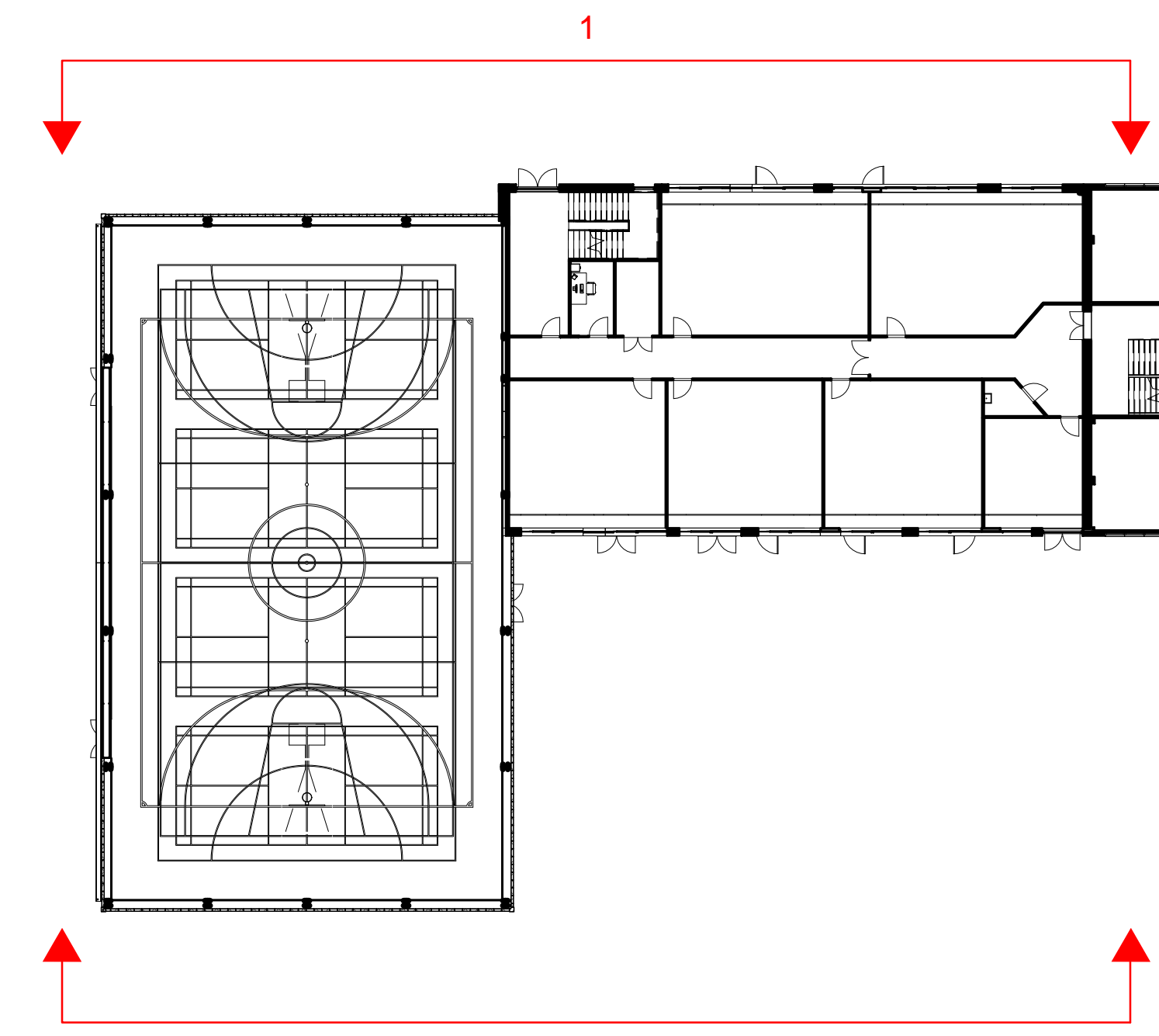


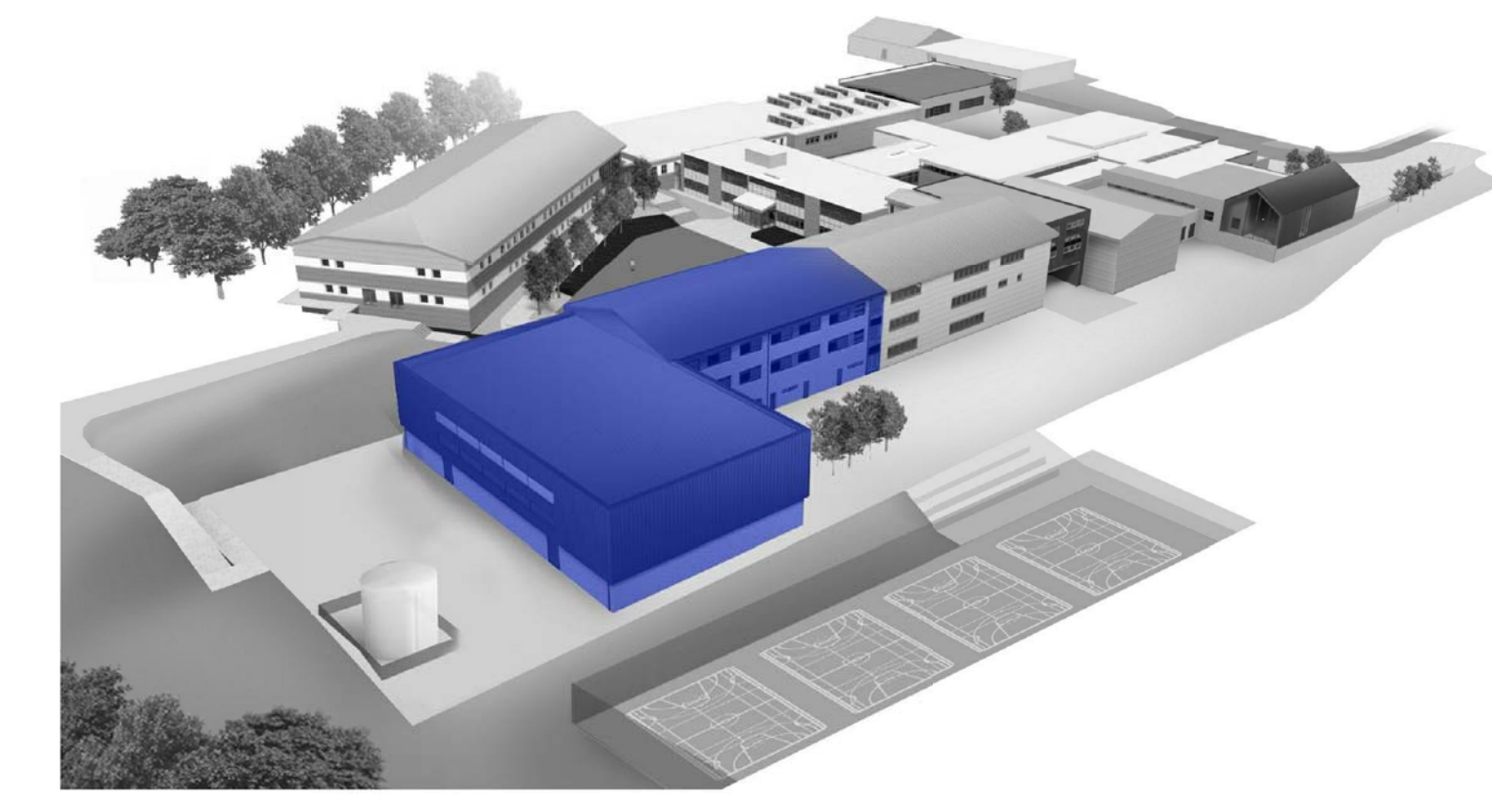
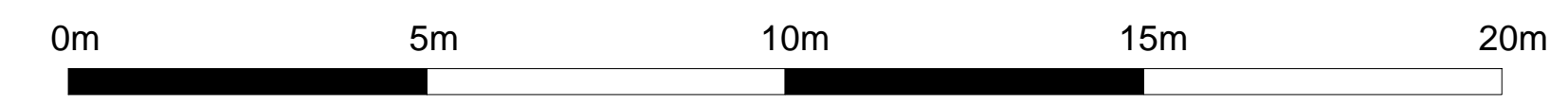


-  **External Brick Wall on SFS**  
102mm Brickwork, 50mm cavity,  
70mm Kingspan K12 Insulation,  
Siniat Weather Defence Board, 150mm SFS Layer with  
Mineral Wool Insulation Between Studs, air tight membrane  
Wall to achieve U-Value of 0.16
-  **External Brick Wall on Block**  
102mm Brickwork, 90mm cavity, Two Layers (50mm + 60mm)  
Kingspan K108 Insulation, Breather membrane, 140mm internal block  
leaf. Two Part Wall Ties to Structural Engineers Specification.  
Wall to achieve U-Value of 0.16
-  **Standing Seam Cladding**  
Euroclad Vieo 25, 454 Standing Seam  
Aluminium Sheet Fixed Vertically to  
Kingspan Benchmark Wall Liner Panels  
(125mm Core Thickness) on Cladding Rails to  
Specialist Sub-Contractor Design.  
Build up to Achieve 0.16 U-Value
-  Glazing: Refer to Window Schedule
-  Spandrel Panel: Refer to Spandrel Panel
-  **C1**  
Rockpanel Xtreme 9mm thick mineral fibre rainscreen panels  
fixed to aluminium profiles using colour head rivets at  
maximum 600mm ctrs. Rockpanel fixed back to aluminium  
subgrid on helping hand brackets. 120mm thk K15 insulation  
and vapour control layer to cavity. All fixed to weather  
defence board and SFS. Mineral wool infill to SFS with  
plasterboard lining and airtightness membrane to inner face.

1 Sports, IT & Business Block - North  
1:100



2 Sports, IT & Business Block - South  
1:100



Rev	Description	Drawn	Checked	Date Issued
01	Issue	JW	JW	04/12/18
02	Approved Following Feedback from V&G	JW	JW	13/12/18
03	Stage 2 Draft Issue	JW	JW	11/01/19
04	Draft PAC Issue	JW	JW	18/01/19
05	PAC Issue	JW	JW	25/01/19
06	General Updates - Spec	JW	JW	01/03/19

DO NOT SCALE. Use figured dimensions only.  
The contractor is requested to check all dimensions before the work is put in hand.  
© All copyrights Austin-Smith Lord LLP  
This drawing must only be used for the purpose for which it is supplied and its contents must not be reproduced for any purpose without written permission.  
No areas indicated, or areas calculated from this drawing should be used for valuation purposes or as the basis for development contracts.  
Austin-Smith Lord LLP is a limited liability partnership registered in England & Wales.  
Number: OC313562

Drawn: JJ  
Date: JAN 2019  
Scale @ A1: As Indicated  
Status: S2  
e: liverpool@austinsmithlord.com  
Drawings and models generated by Austin-Smith Lord LLP BIM using Autodesk Revit

**Austin-Smith: Lord**  
Project: Ysgol Bro Morgannwg  
Description: Proposed Sports, IT & Business Block Elevations Sheet 1

Job No. 318052 Drawing No. YBM-ASL-30-ZZ-DR-A-0253 Revision P6