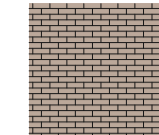



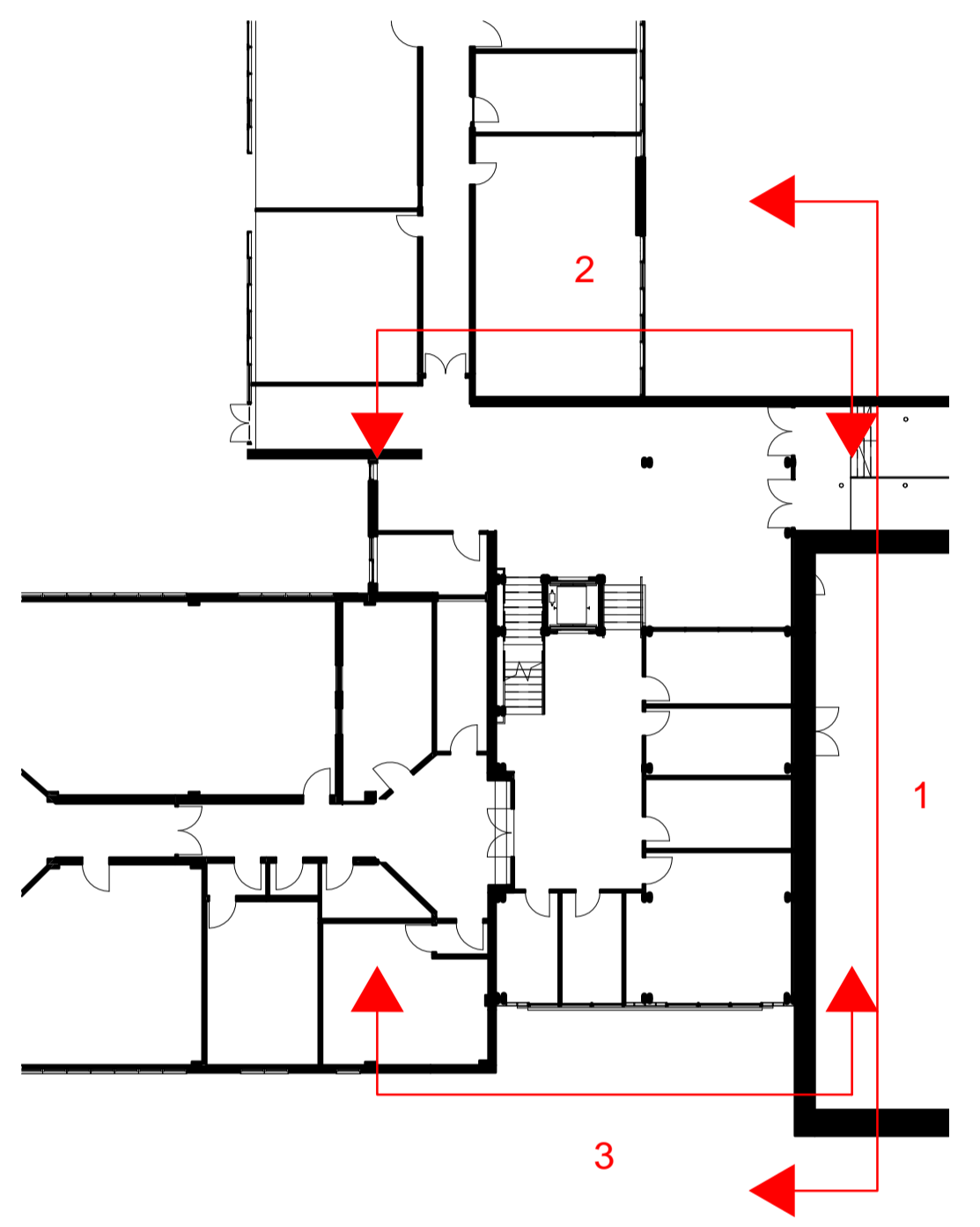
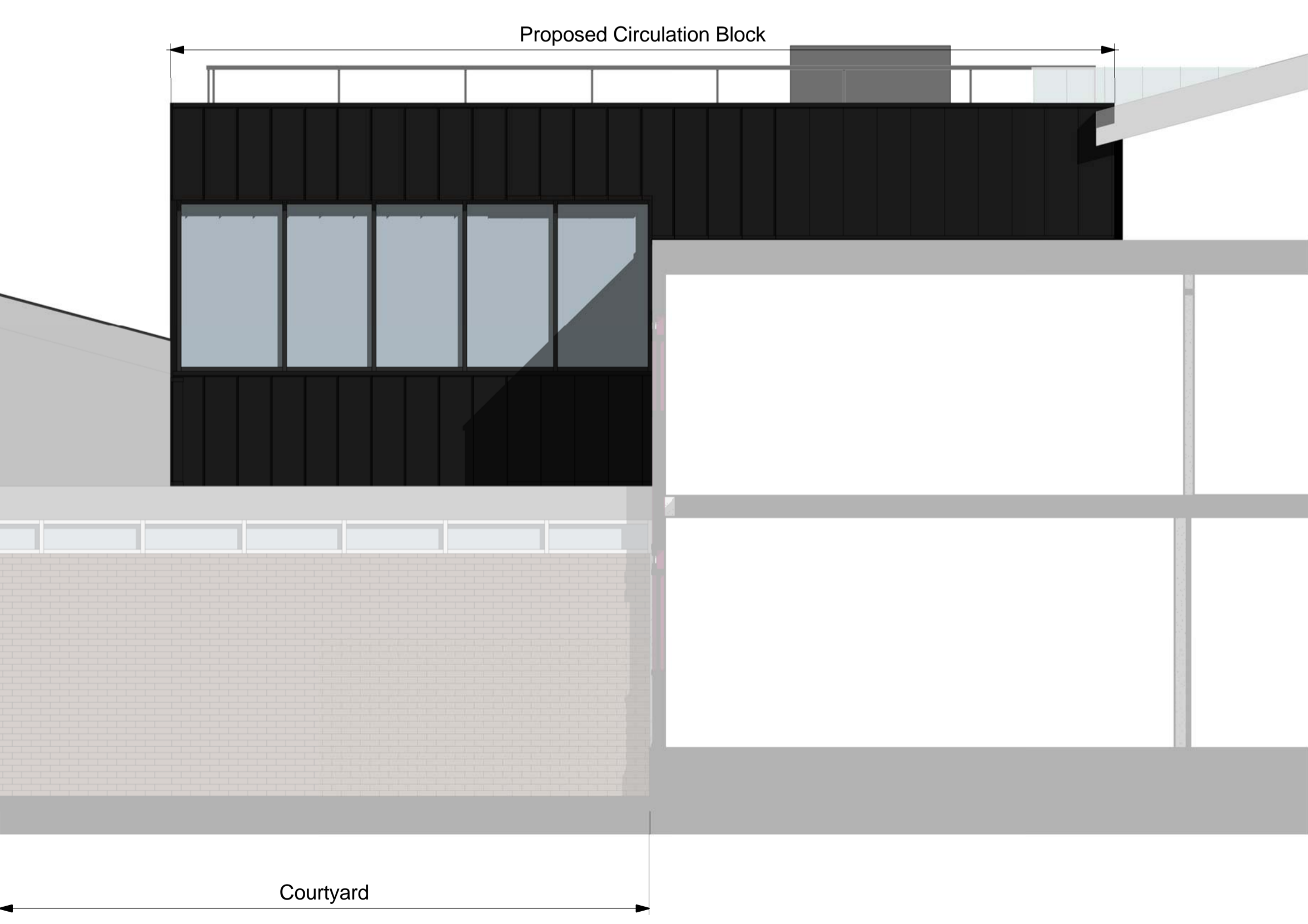


-  Brick
-  Insulated panel with Standing Seam Metal Finish
-  Glazing
-  Spandrel Panel



1 Circulation Block - East
1:50



3 Circulation Block - South
1:50

2 Circulation Block - North
1:50



0m 5m

Rev	Description	Drawn	Checked	Date Issued
01	Issued for Comment	MW		27/11/18
02	Approved Following Feedback from V&G	MW		13/12/18
03	Stage 2 Draft Issue	MW		11/01/19
04	Draft PAC Issue	MW		18/01/19
05	PAC Issue	MW		29/01/19

DO NOT SCALE. Use figured dimensions only. The contractor is requested to check all dimensions before the work is put in hand. © All copyrights Austin-Smith Lord LLP. This drawing must only be used for the purpose for which it is supplied and its contents must not be reproduced for any purpose without written permission. No areas indicated, or areas calculated from this drawing should be used for valuation purposes or as the basis for development contracts. Austin-Smith Lord LLP is a limited liability partnership registered in England & Wales. Number: 00315362

Drawn: MW
 Date: JAN 2019
 Scale @ A1: As Indicated
 Status: S2
 e: liverpool@austinsmithlord.com
 Drawings and models generated by Austin-Smith Lord LLP BIM using Autodesk Revit

Austin-Smith:Lord
 Project: Ysgol Bro Morgannwg
 Description: Proposed Circulation Block Elevations
 Job No. 318052 Drawing No. YBM-ASL-20-ZZ-DR-A-0252 Revision PS