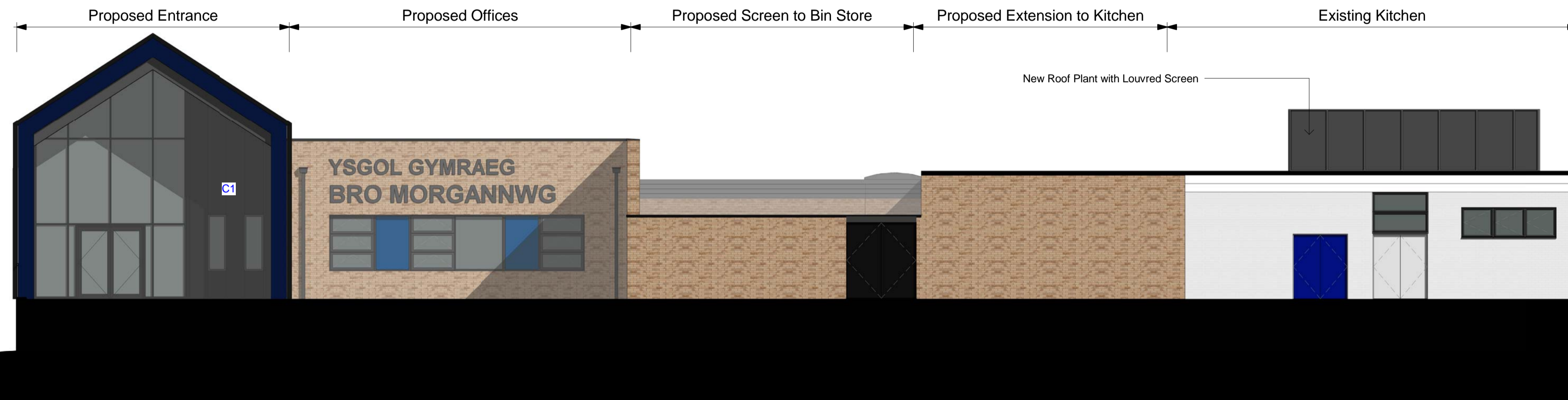
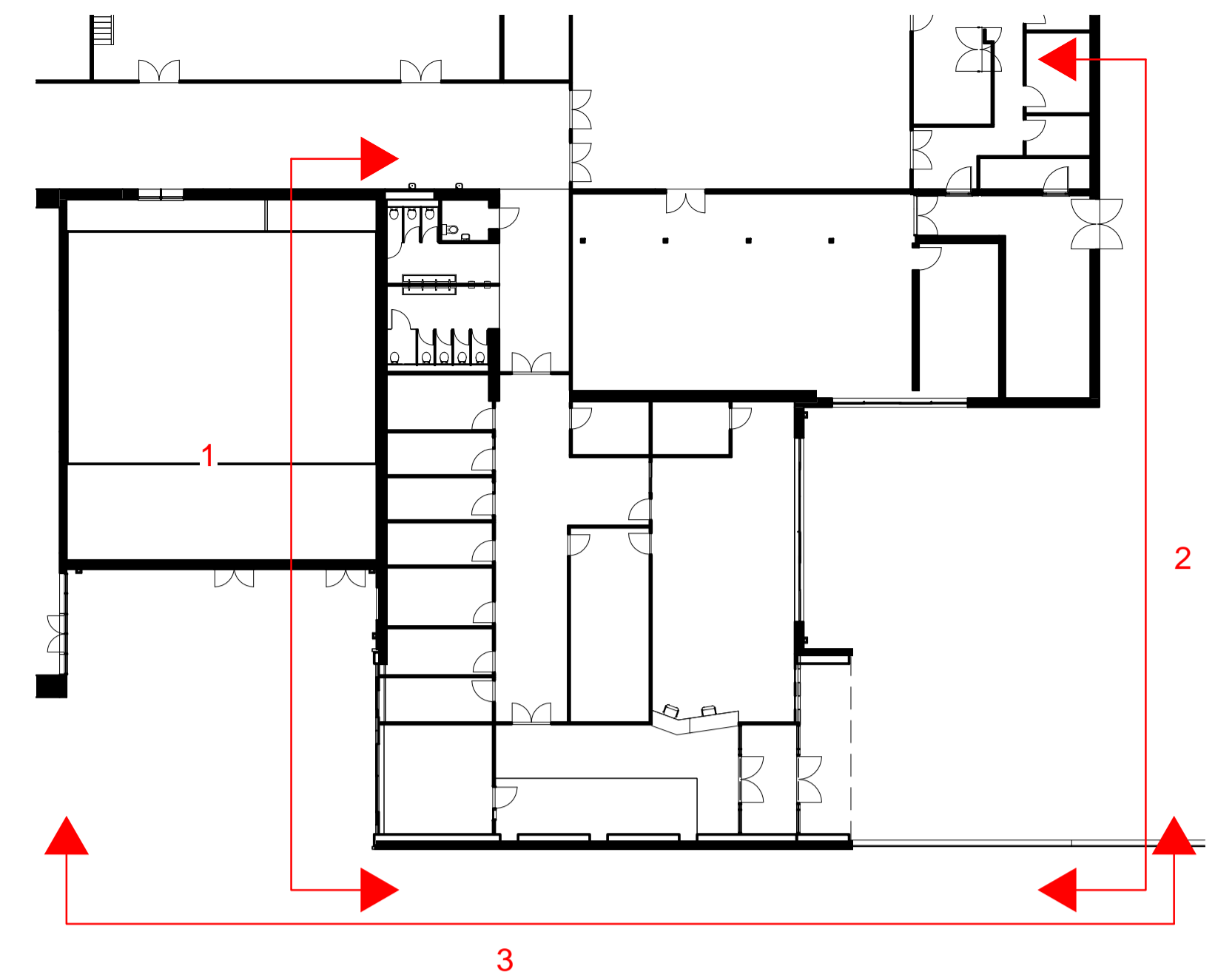
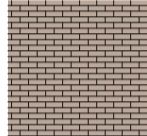
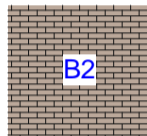




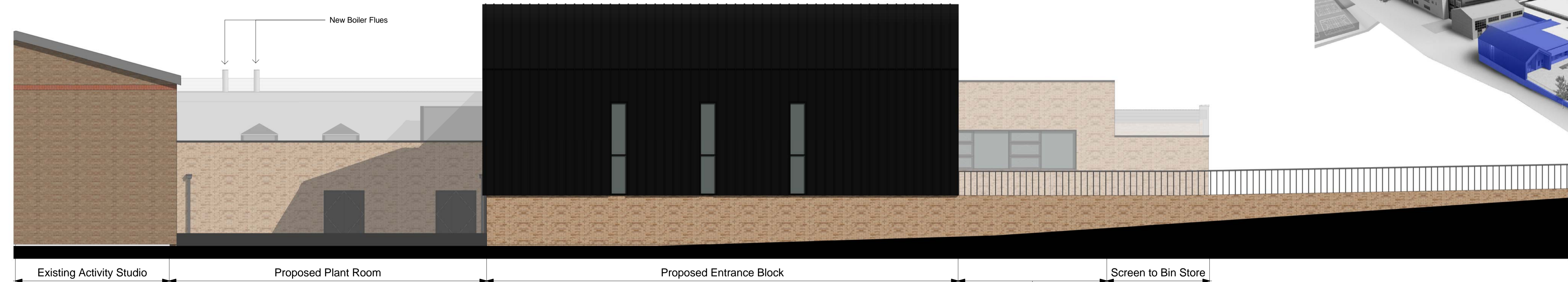


1 Entrance Block - West
1:100

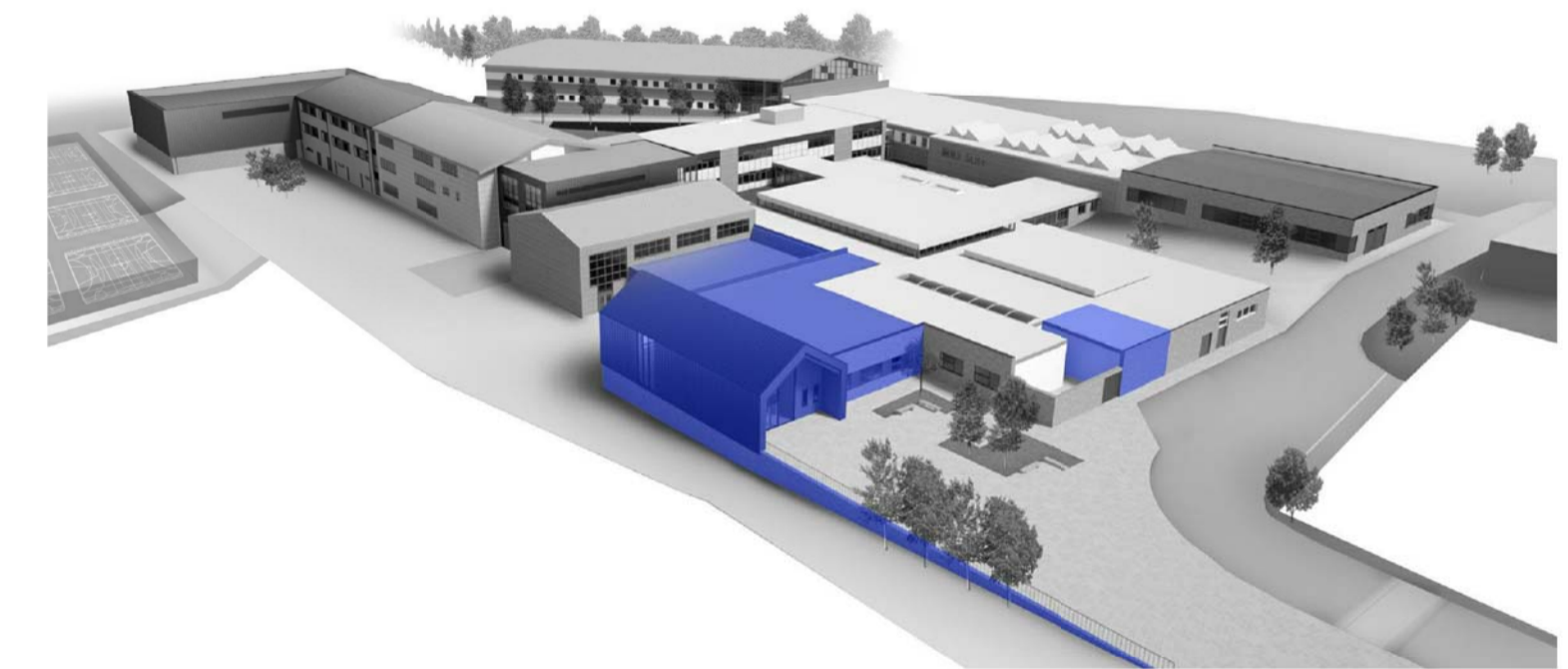


2 Entrance Block - East
1:100

-  **External Brick Wall on SFS**
102mm Brickwork, 50mm cavity, 70mm Kingspan K112 Insulation, Siniat Weather Defence Board, 150mm SFS Layer with Mineral Wool Insulation Between Studs, air tight membrane Wall to achieve U-Value of 0.16
-  **External Brick Wall on Block**
102mm Brickwork, 90mm cavity, Two Layers (50mm + 60mm) Kingspan K108 Insulation, Breather membrane, 140mm internal block leaf. Two Part Wall Ties to Structural Engineers Specification. Wall to achieve U-Value of 0.16
-  **Standing Seam Cladding**
Euroclad Vieo 25_454 Standing Seam Aluminium Sheet Fixed Vertically to Kingspan Benchmark Wall Liner Panels (125mm Core Thickness) on Cladding Rails to Specialist Sub-Contractor Design. Build up to Achieve 0.16 U-Value
-  **Glazing:** Refer to Window Schedule
-  **Spandrel Panel:** Refer to Spandrel Panel
-  **Rockpanel Xtreme** 9mm thick mineral fibre rainscreen panels fixed to aluminium profiles using colour head rivets at maximum 600mm ctrs. Rockpanel fixed back to aluminium subgrid on helping hand brackets. 120mm thk K15 insulation and vapour control layer to cavity. All fixed to weather defence board and SFS. Mineral wool infill to SFS with plasterboard lining and airtightness membrane to inner face.



3 Entrance Block - South
1:100



Rev	Description	Drawn	Checked	Date Issued
01	Issued for Commence			27/11/18
02	Approved Following Feedback from YSG			13/12/18
03	Stage 2 Draft Issue			11/01/19
04	PAC Issue			26/01/19
05	General Updates + Spec			01/02/19

DO NOT SCALE. Use figured dimensions only. The contractor is requested to check all dimensions before the work is put in hand. © All copyrights Austin-Smith Lord LLP. This drawing must only be used for the purpose for which it is supplied and its contents must not be reproduced for any purpose without written permission. Rev areas indicated, or areas calculated from this drawing should be used for valuation purposes or as the basis for development contracts. Austin-Smith Lord LLP is a limited liability partnership registered in England & Wales. Number: OC315362

Drawn	MW	Austin-Smith:Lord LLP
Date	JAN 2019	Architects Designers Planners
Scale @ A1	As Indicated	Landscap Architects
Status	S2	Port Of Liverpool Building
		Pier Head, Liverpool
		L3 1BY
		t +44 (0)151 227 1083
		e liverpool@austinsmithlord.com
		Drawings and models generated by Austin-Smith Lord LLP BIM using Autodesk Revit

Austin-Smith:Lord

Project: Ysgol Bro Morgannwg		
Description: Proposed Entrance Block Elevations		
Job No.	Drawing No.	Revision
318052	YBM-ASL-10-ZZ-DR-A-0251	P5