

Advice : HSL-180430115643-277 DO NOT ADVISE AGAINST

Your Ref: 2018/00290/FUL

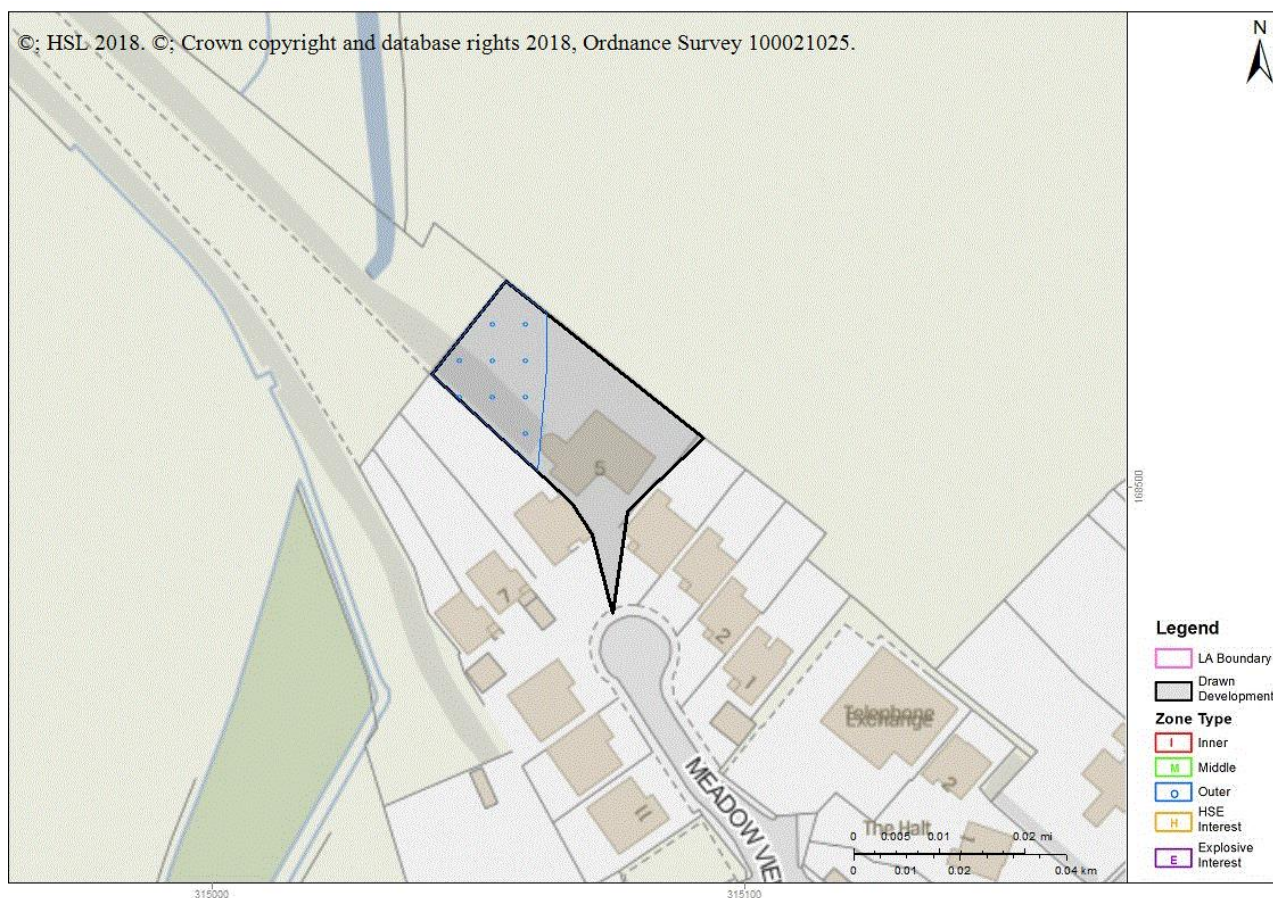
Development Name: 5, Meadowview Court, Sully

Comments:

Land Use Planning Consultation with Health and Safety Executive [Town and Country Planning (Development Management Procedure) (England) Order 2015, Town and Country Planning (Development Management Procedure) (Wales) Order 2012, or Town and Country Planning (Development Management Procedure) (Scotland) Regulations 2013]

The Health and Safety Executive (HSE) is a statutory consultee for certain developments within the Consultation Distance of Major Hazard Sites/ pipelines. This consultation, which is for such a development and is within at least one Consultation Distance, has been considered using HSE's planning advice web app, based on the details input on behalf of Bro Morgannwg - the Vale of Glamorgan.

HSE's Advice: Do Not Advise Against, consequently, HSE does not advise, on safety grounds, against the granting of planning permission in this case.

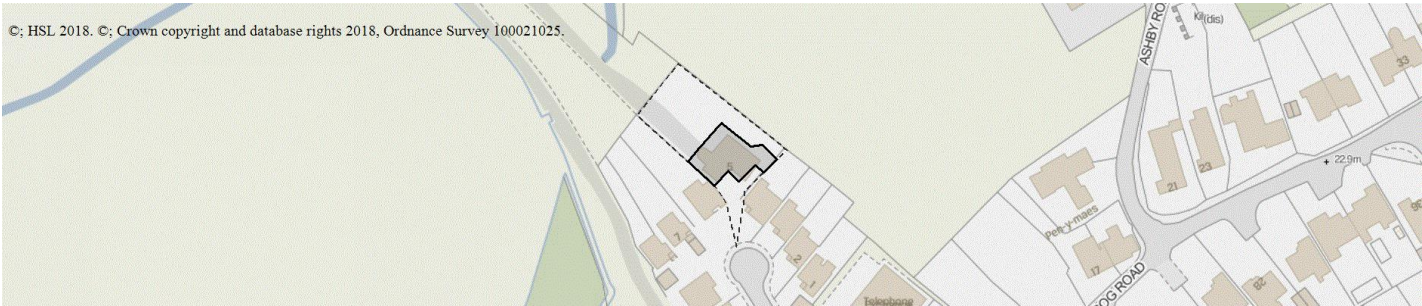


Commercial In Confidence

Breakdown:

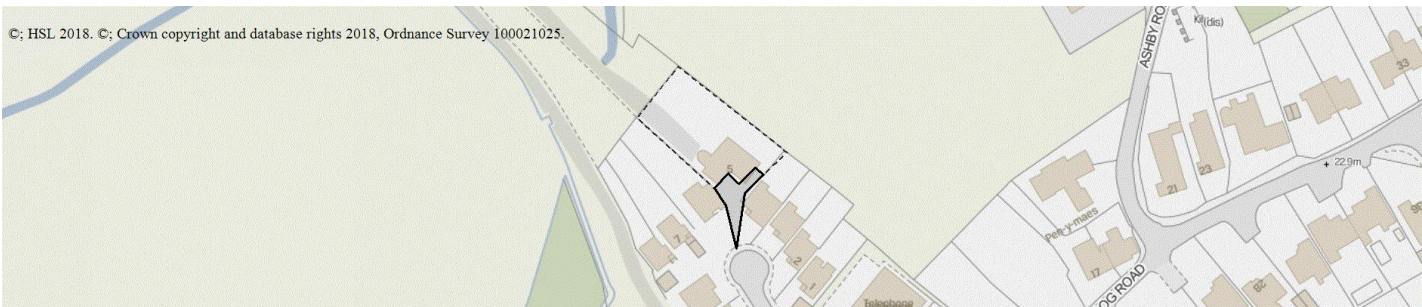
Housing DAA

How many dwelling units are there (that lie partly or wholly within a consultation distance)? Less than 3



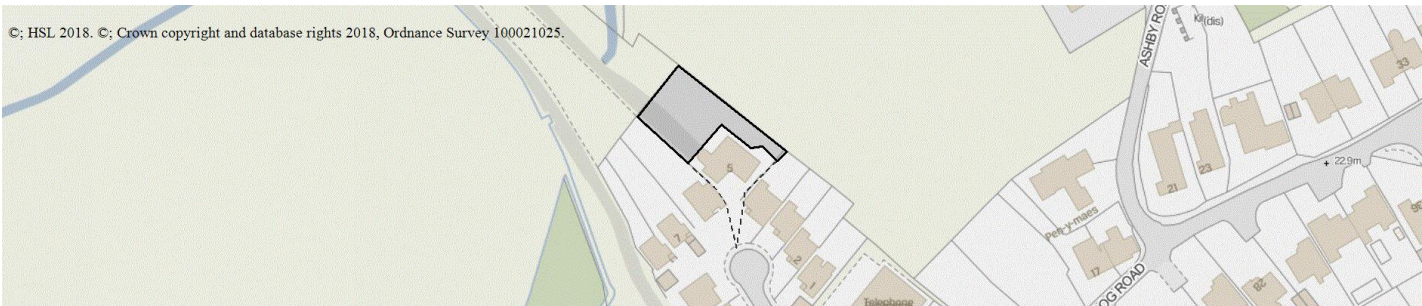
Parking Areas DAA

Is this a parking area with no other associated facilities, car parks which are part of another development type should be included within that development type Yes



Landscaping DAA

There are no questions for landscaping



Unidentified Pipelines

There is at least one unidentified pipeline in this Local Authority Area. You may wish to check with the pipeline operator where known or the Local Authority before proceeding. The details HSE have on record for these pipelines is as follows:

- 14312_ Dow Corning LtdChlorosilane line between Dow Corning & Cabot site
- 4490995_ Navigator Terminals Windmill LtdLand Tanks to Dow silicones - Methanol transfer line ME -

- 4551570_ Navigator Terminals Windmill Ltd Navigator land tanks to Barry No 2 dock

This advice report has been generated using information supplied by at Bro Morgannwg - the Vale of Glamorgan on 30 April 2018.

Note that any changes in the information concerning this development would require it to be re-submitted.