

**OUTLINE PLANTING SPECIFICATION**

To be read in conjunction with: **LANDSCAPE AND VISUAL IMPACT ASSESSMENT AND LANDSCAPE MANAGEMENT PLAN.**

**TIMING:** All planting is to be carried out during November-March, inclusive

**VEGETATION CLEARANCE:** In areas to be planted, all grass and other herbaceous vegetation shall be cut to a height of between 50 mm and 75 mm and the arising's removed. Prior to applying herbicide the contractor shall await active vegetative re-growth sufficient for the herbicide to be at its most effective.

**WEED CONTROL:** The Contractor shall apply a non-residual translocated herbicide to all areas to be planted and seeded between 21 and 25 days prior to planting. The treatment for total herbicide control shall kill all treated growth including their root systems. The Contractor shall not commence any excavation or cultivation of the areas where herbicide has been applied until the vegetation has been effectively controlled.

**TOPSOIL AND CULTIVATION:** Existing soil to be used, imported topsoil not required. Cultivate the soil of all areas prior to seeding. This should include loosening, aerating and breaking up soil into particles 2-8mm to depths of 150mm. Remove any undesirable material brought to surface to a depth of 100mm including visible weeds, roots and large stones or clay balls with any dimension exceeding 30mm. Final cultivation prior to seeding topsoil shall be brought to a fine tilth by approved mechanical means or by hand raking, and if necessary re-grading of the surface will be carried out to conform to the prescribed finished levels.

**PLANT PROTECTION:** Where new planting is taking place in the vicinity of grazing stock all new planting needs to be protected by a temporary post and wire fence during its establishment. All trees and shrubs to be protected against rabbit grazing by using Tubex shelters. For suggested sizes refer to LBMP.

**TREE PLANTING:**

- All trees to consist of heavy standard trees planted in pits at the base of hedgerows, with depth of 500mm and width of 600mm
- The base of each pit to be broken up to 150mm with all topsoil thoroughly broken up from the carefully excavated material, and any soil additives and/or ameliorants added in accordance with best practice, prior to backfilling.
- Trees shall be secured in position using round timber stakes (top diameter of 50-75 mm), peeled of bark, straight in length and free of snags, pests and diseases; with adjustable 25mm tree ties, made of black PVC or reinforced rubber
- Stakes for all trees shall be firmly driven and positioned into the tree planting pit, before planting to a minimum depth of 300 mm below the bottom of the pit.
- The stake shall be positioned off centre on the prevailing windward side of the tree as near to the tree as possible but shall not interfere with the free movement of the branches and shall cause no rubbing.

**WOODLAND BELT PLANTING**

Woodland belt planting to consist of translocated stools/stumps from the areas of existing woodland being removed (refer to Cog Moors WwTW AAD Arboricultural Report for details of woodland being removed) and new planting material. Translocation should be undertaken as follows;

- Translocation work to be undertaken in September/October
- Trees identified as suitable for translocation to be coppiced;
- Stumps/stools to be dug out using demountable buckets and placed directly into dumpers for transport to areas identified for new woodland belt planting;
- Stumps/stools will be placed within excavated pits appropriate to each ones' size. Pits to be backfilled with topsoil.
- Stumps/stools to be placed at 5m centres and arranged in a random pattern.
- Areas identified as Woodland Belt Planting that cannot be covered by translocated trees will be planted using new planting material (see TREE PLANTING for details)

**PLANTING SCHEDULES**

Tree Planting

Name	Symbol	Common Name	Root	Height	Brks	Age	Girth	Form	No.
<i>Quercus robur</i>	QR	Common Oak	BR	175-200	3	2x	8-10cm	Standard	6
<i>Aulus glutinosa</i>	AG	Alder	BR	175-200	3	2x	8-10cm	Standard	5
<i>Prunus avium</i>	PA	Wild Cherry	BR	175-200	5	2x	8-10cm	Standard	5

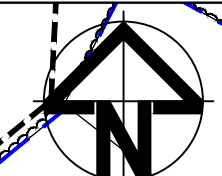
Woodland Belt Planting

Area of woodland to be under planted -12102m<sup>2</sup>

%	Name	Common Name	Size	Height (cm)	Spacing (m)
24	<i>Corylus avellana</i>	Hazel	1+1 Forestry transplant; Bare root.	40-60	1.5
24	<i>Quercus robur</i>	Pedunculata Oak	1+1 Forestry transplant; Bare root.	40-60	1.5
6	<i>Carpinus betulus</i>	Hornbeam	2L Pot. 1.5m spacing.	30-40	1.5
6	<i>Crataegus monogyna</i>	Hawthorn	1+1 Forestry transplant; Bare root; 1.5m spacing.	40-60	1.5
5	<i>Prunus avium</i>	Wild Cherry	1+1 Forestry transplant; Bare root.	40-60	1.5
4	<i>Ligustrum vulgare</i>	Wild Privet	1+1 Forestry transplant; Bare root.	40-60	1.5
4	<i>Malus sylvestris</i>	Crab Apple	1+1 Forestry transplant; Bare root.	40-60	1.5
4	<i>Viburnum lantana</i>	Wayfaring-Tree	1+1 Forestry transplant; Bare root.	40-60	1.5
4	<i>Acer campestre</i>	Field Maple	1+1 Forestry transplant; Bare root.	40-60	1.5
3	<i>Sorbus aucuparia</i>	Rowan	1+1 Forestry transplant; Bare root.	40-60	1.5
3	<i>Cornus sanguinea</i>	Dogwood	1+1 Forestry transplant; Bare root.	40-60	1.5
2	<i>Lonicera periclymenum</i>	Honeysuckle	2L pot. planted close enough to another tree, shrub or fence to allow use for support.	40-60	1.5
2	<i>Frangula alnus</i>	Alder Buckthorn	1+1 Forestry transplant; Bare root.	40-60	1.5
2	<i>Rhamnus cathartica</i>	Buckthorn	1+1 Forestry transplant; Bare root.	40-60	1.5
2	<i>Euonymus europaea</i>	Spindle	1+1 Forestry transplant; Bare root.	40-60	1.5
2	<i>Prunus padus</i>	Bird Cherry	1+1 Forestry transplant; Bare root.	40-60	1.5
2	<i>Sambucus nigra</i>	Elder	1+1 Forestry transplant; Bare root.	40-60	1.5
1	<i>Ilex aquifolium</i>	Holly	2L Pot. 1.5m spacing.	40-60	1.5
1	<i>Hedera helix</i>	Ivy	2L pot. planted close enough to another tree, shrub or fence to allow use for support.	40-60	1.5

**INSET PLAN**  
SCALE 1:1250@A1

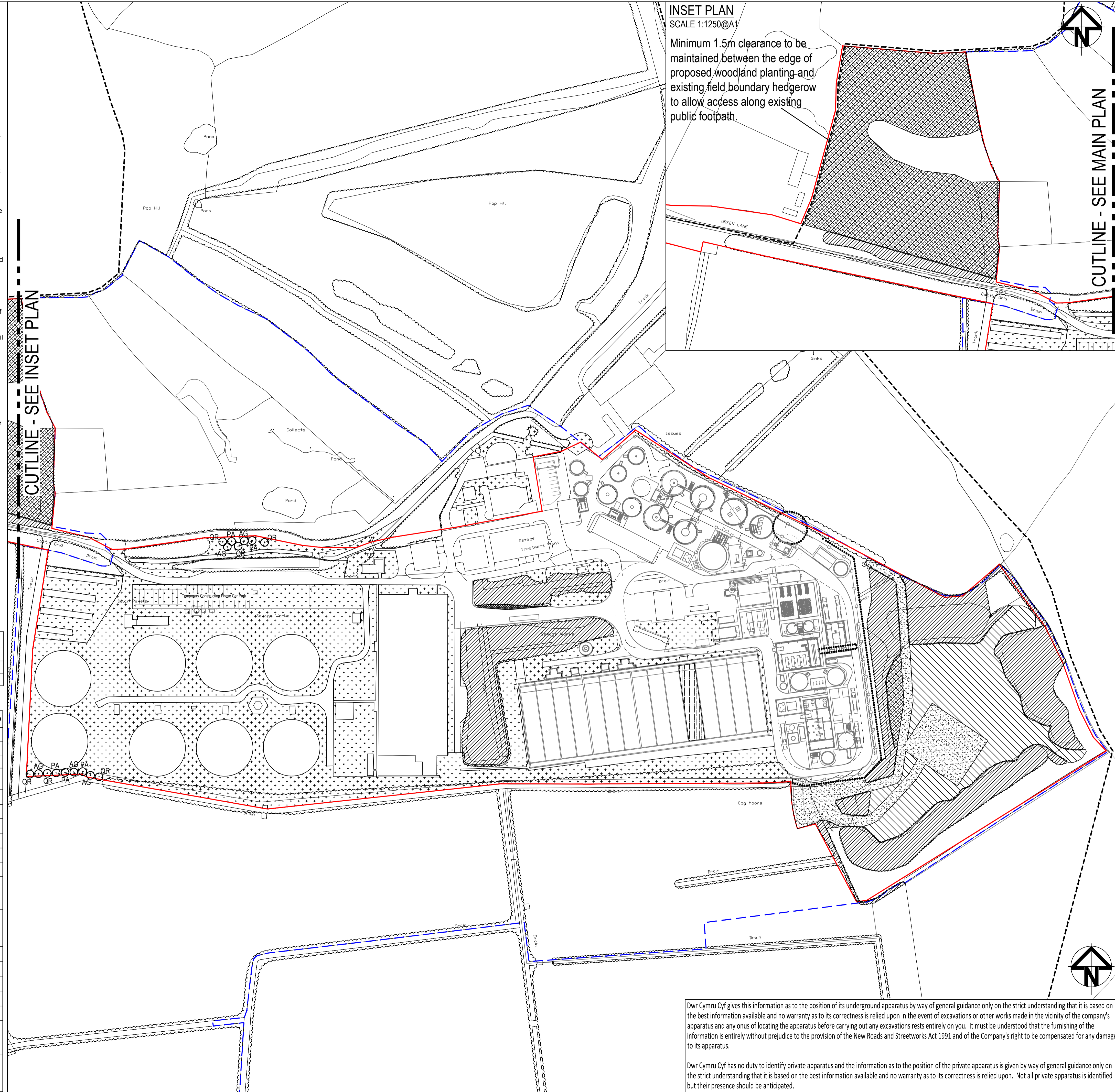
Minimum 1.5m clearance to be maintained between the edge of proposed woodland planting and existing field boundary hedgerow to allow access along existing public footpath.



CUTLINE - SEE MAIN PLAN

- LEGEND:**
- Planning Application Boundary
  - DCWW Land Ownership Boundary
  - - - - - Public Rights of Way
  - [Stippled] Existing Amenity Grass
  - [Dotted] Existing Tree and Shrub Planting
  - [Diagonal lines] Existing Tree planting to be managed for biodiversity
  - [Cross-hatched] Existing Grassland to be managed as Species Rich Grassland
  - [Vertical lines] Area to be Managed for Wildlife
  - [Horizontal lines] SINC Grassland Management Area
  - [Diagonal lines] Proposed Amenity Grassland
  - [Cross-hatched] Proposed Species Rich Grassland
  - [Diagonal lines] Proposed Woodland Belt Planting
  - [Circle with dot] Proposed Individual Tree Planting

A1



Dwr Cymru Cyf gives this information as to the position of its underground apparatus by way of general guidance only on the strict understanding that it is based on the best information available and no warranty as to its correctness is relied upon in the event of excavations or other works made in the vicinity of the company's apparatus and any onus of locating the apparatus before carrying out any excavations rests entirely on you. It must be understood that the furnishing of the information is entirely without prejudice to the provision of the New Roads and Streetworks Act 1991 and of the Company's right to be compensated for any damage to its apparatus.

Dwr Cymru Cyf has no duty to identify private apparatus and the information as to the position of the private apparatus is given by way of general guidance only on the strict understanding that it is based on the best information available and no warranty as to its correctness is relied upon. Not all private apparatus is identified but their presence should be anticipated.

P02	19.03.18	RG	UPDATED BOUNDARY	SF	LW	19.03.18
P01	15.12.17	RG	FIRST ISSUE	SF	LW	15.12.17
Rev.	Date	Drawn	Description	Chkd	Appd	Date
 Ty Awon, Spooner Close, Coed Kernew, Newport, NP108FZ						
Project Name: COG MOORS WwTW AAD						
Drawing Title: FIGURE 16 LANDSCAPE PLANTING PLAN						
Suitability: INFORMATION Suitability Code: S2						
Originator: R.G.		Designer: S.F.		Date: 15.12.17		
Internal Project Number: UA007902		Scale: 1:1250@A1		Rev: P02		
Drawing Number: 4798-S-202-HYD-XX-XX-DR-NX-06133						