

GENERAL

- DO NOT SCALE FROM THIS DRAWING.
- ALL DIMENSIONS ARE IN MILLIMETRES (mm) & ALL LEVELS ARE IN METRES (m) AOD, UNLESS STATED OTHERWISE.
- ALL DIMENSIONS & LEVELS TO BE CHECKED ON SITE AND ANY DISCREPANCIES SHOULD BE REPORTED TO GHD LIVGUNN.
- THIS DRAWING IS TO BE READ IN CONJUNCTION WITH ALL RELEVANT PROJECT STANDARDS AND SPECIFICATIONS.

NOTES

2400mm DIAMETER ATTENUATION TANK LAID TO FALLS. TANK INSTALLED WITH BEDDING SURROUND AS TYPICAL DETAIL TO SUPPLIER SPECIFICATION.

TOTAL ATTENUATION - 706m³
 1:100 YEAR STORM - 350m³
 1:100 YEAR STORM - 485m³
 1:100 YEAR STORM - 652.8m³
 FRB BUILDING FT STORAGE VOLUME - 54m³

VOLUME REQUIREMENTS BASED ON 220m³ FIRE DEMAND, 368m³ SPRINKLER DEMAND & 120m³ 1:100 YEAR STORM.

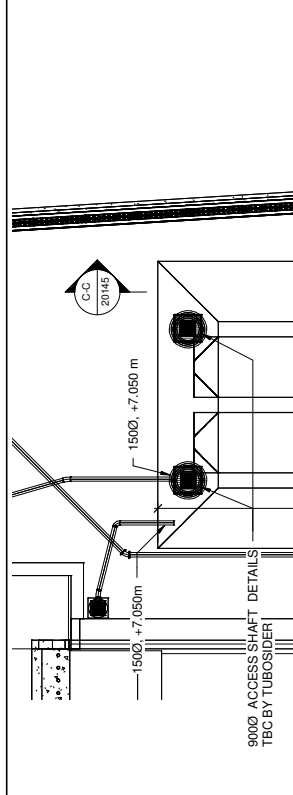
STORM WATER LEVELS
 BASED ON 3 L/s DISCHARGE

1:1 YEAR STORM - 120m³
 1:30 YEAR STORM - 350m³
 1:100 YEAR STORM - 485m³

STORM WATER VOLUME & ASSOCIATED ATTENUATION WATER LEVEL TBC FOLLOWING DRAINAGE DISCHARGE RATE AND LOCATION CONFIRMATION BY GALLIFORD TRY / PCML.

FOR HARDSTANDING DETAIL REFER TO DRAWINGS:
 BARRY_01_DWG_01_20151
 BARRY_01_DWG_01_20156
 BARRY_01_DWG_01_20161

VENTILATION REQUIREMENTS TBC



SAFETY, HEALTH & ENVIRONMENTAL (SHE) INFORMATION

IN ADDITION TO THE HAZARDOUS RISKS NORMALLY ASSOCIATED WITH THE TYPES OF WORK DETAILED ON THIS DRAWING, NOTE THE FOLLOWING:

CONSTRUCTION

- EXISTING BURIED SERVICES MAY BE PRESENT.
- WATER TABLE LEVEL AT +5.000m AOD (APPROX) REFER TO CCG REPORT CCG-C-15-8665-5

MAINTENANCE / CLEANING

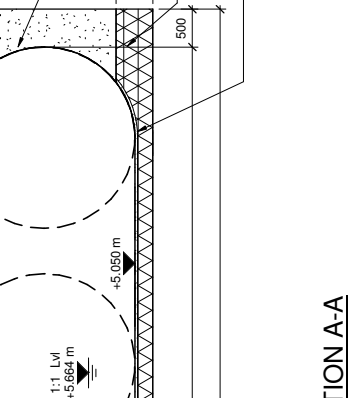
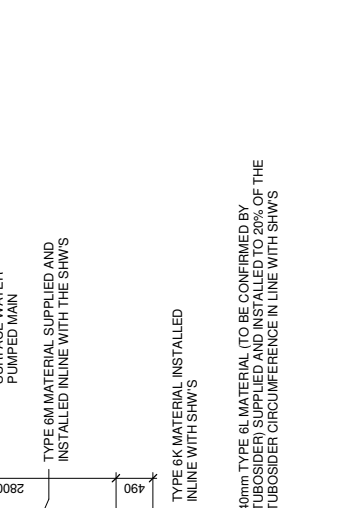
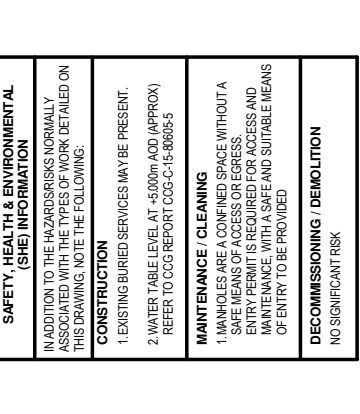
1. MANHOLES ARE A CONFINED SPACE WITHOUT A SAFE MEANS OF ACCESS OR EGRESS. ENTRY PERMIT IS REQUIRED FOR ACCESS AND MAINTENANCE, WITH A SAFE AND SUITABLE MEANS OF ENTRY TO BE PROVIDED.

DECOMMISSIONING / DEMOLITION

NO SIGNIFICANT RISK

DRAINAGE

- ALL DRAINAGE WORKS TO BE CARRIED OUT IN ACCORDANCE WITH CES WITH 7TH EDITION
- ALL TUBESIDER ELEMENTS TO BE INSTALLED IN LINE WITH MANUFACTURERS DETAILS
- ALL BEDDING TO OTHER SERVICES AS STANDARD DETAIL DRAWING - BARRY_01_DWG_01_20135



ATTENUATION SECTION A-A
 SCALE 1:50

ATTENUATION TANK SECTION B-B
 SCALE 1:50

ATTENUATION TANK SECTION C-C
 SCALE 1:75

2D EXPORT FROM A 3D MODEL
 ALL ALTERATIONS TO BE MADE IN THE MODEL FILE

PRELIMINARY

Rev	Date	Description	By	Chk	App
C	26/02/2017	UPDATED FOR TUBESIDER SYSTEM	JW	MS	GB
B	20/02/2017	UPDATED FOR TUBESIDER SYSTEM	JW	MS	GB
A	20/02/2016	PRELIMINARY ISSUED FOR INFORMATION	JW	MS	GB

CLIENT

GHD LIVGUNN
 51 Brookfield Road
 Cheshire
 SK9 1ES
 0161 491 4600
 info@ghdlivgunn.com

PROJECT
 BARRY BIOMASS UK NO 2 LIMITED

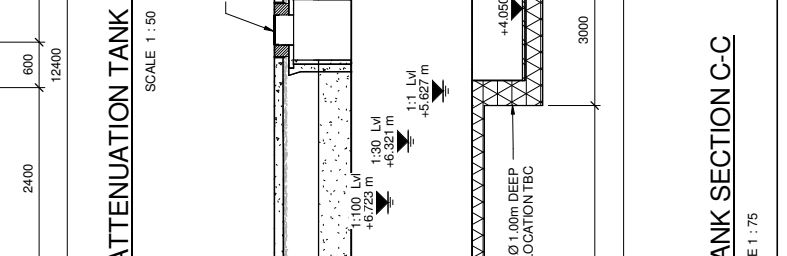
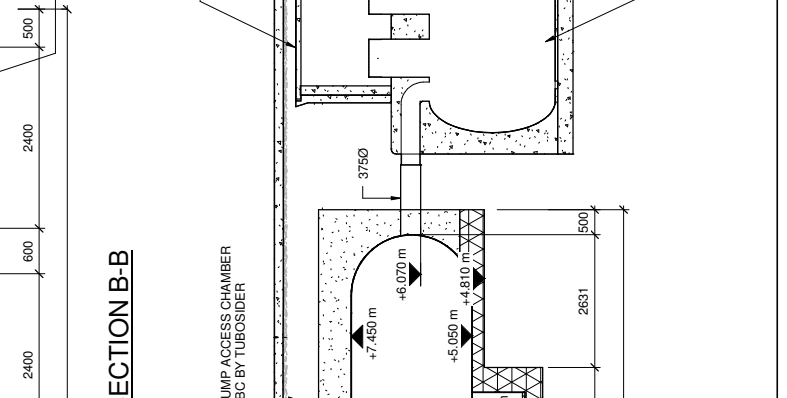
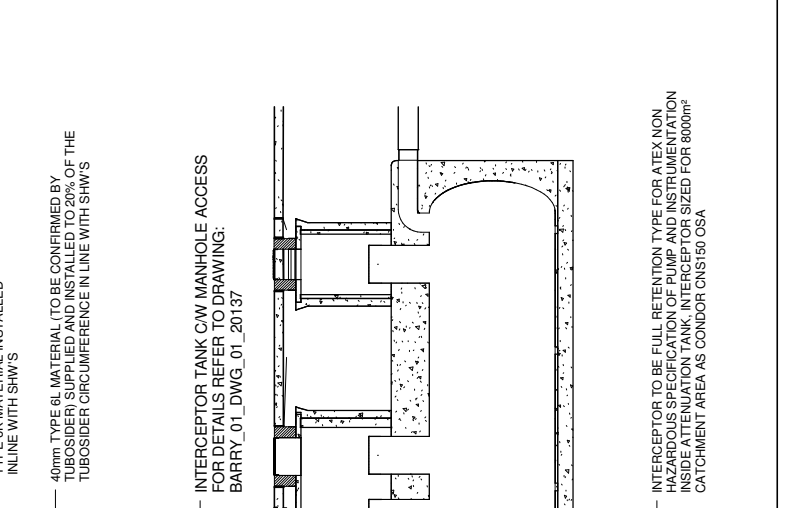
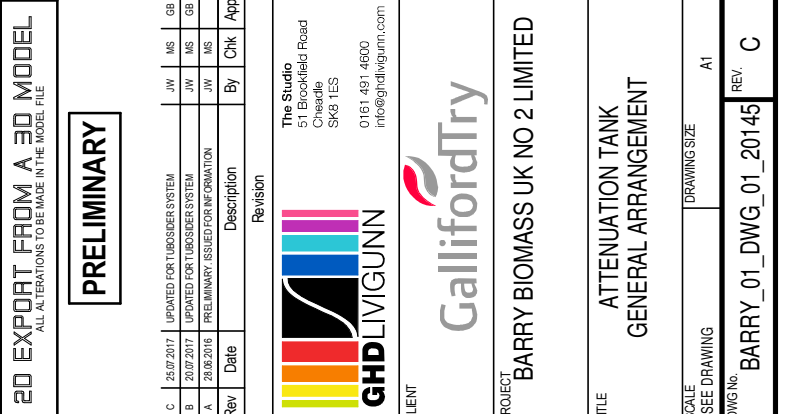
TITLE
 ATTENUATION TANK
 GENERAL ARRANGEMENT

SCALE
 SEE DRAWING

DRAWING SIZE
 A1

DWG No
 BARRY_01_DWG_01_20145

REV.
 C



**FOR HARDSTANDING DETAIL REFER TO DRAWINGS:
 BARRY_01_DWG_01_20151
 BARRY_01_DWG_01_20156
 BARRY_01_DWG_01_20161**

**FOR HARDSTANDING DETAIL REFER TO DRAWINGS:
 BARRY_01_DWG_01_20151
 BARRY_01_DWG_01_20156
 BARRY_01_DWG_01_20161**

**FOR HARDSTANDING DETAIL REFER TO DRAWINGS:
 BARRY_01_DWG_01_20151
 BARRY_01_DWG_01_20156
 BARRY_01_DWG_01_20161**

40mm TYPE 6L MATERIAL (TO BE CONFIRMED BY TUBESIDER) SUPPLIED AND INSTALLED TO 20% OF THE TUBESIDER CIRCUMFERENCE IN LINE WITH SHW'S

40mm TYPE 6L MATERIAL (TO BE CONFIRMED BY TUBESIDER) SUPPLIED AND INSTALLED TO 20% OF THE TUBESIDER CIRCUMFERENCE IN LINE WITH SHW'S

40mm TYPE 6L MATERIAL (TO BE CONFIRMED BY TUBESIDER) SUPPLIED AND INSTALLED TO 20% OF THE TUBESIDER CIRCUMFERENCE IN LINE WITH SHW'S

INTERCEPTOR TO BE FULL RETENTION TYPE FOR ATEX NON HAZARDOUS SPECIFICATION OF PUMP AND INSTRUMENTATION (SEE RETENTION TIME TABLE FOR SIZING) FOR 8000m³ CATCHMENT AREA AS CONDUIT CNS150 CSA

