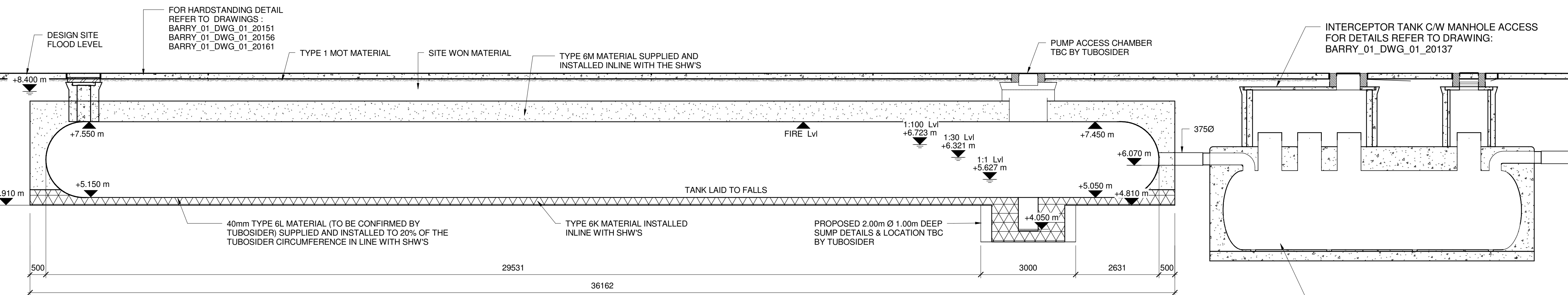


PLAN ON ATTENUATION TANK

SCALE 1 : 150



ATTENUATION TANK SECTION A-A

SCALE 1 : 75

VENTILATION REQUIREMENTS TBC

STORM WATER VOLUME & ASSOCIATED ATTENUATION WATER LEVEL TBC FOLLOWING DRAINAGE DISCHARGE RATE AND LOCATION CONFIRMATION BY GALLIFORD TRY / PCML.

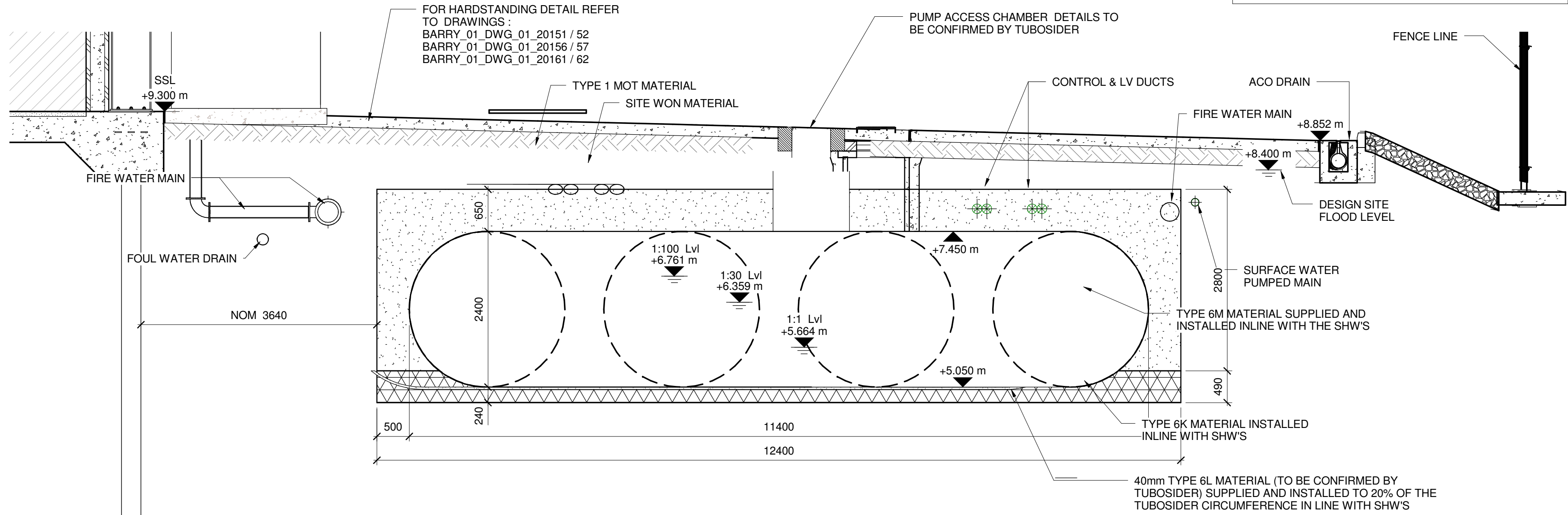
STORM WATER LEVELS, BASED ON 3 Lts/S DISCHARGE (WITH ALLOWANCE FOR 20% CLIMATE CHANGE)

1:1 YEAR STORM - 120m³  
1:30 YEAR STORM - 350m³  
1:100 YEAR STORM - 485m³

24000mm DIAMETER ATTENUATION TANK LAID TO FALLS. TANK INSTALLED WITH BEDDING SURROUND AS TYPICAL DETAIL TO SUPPLIER SPECIFICATION:

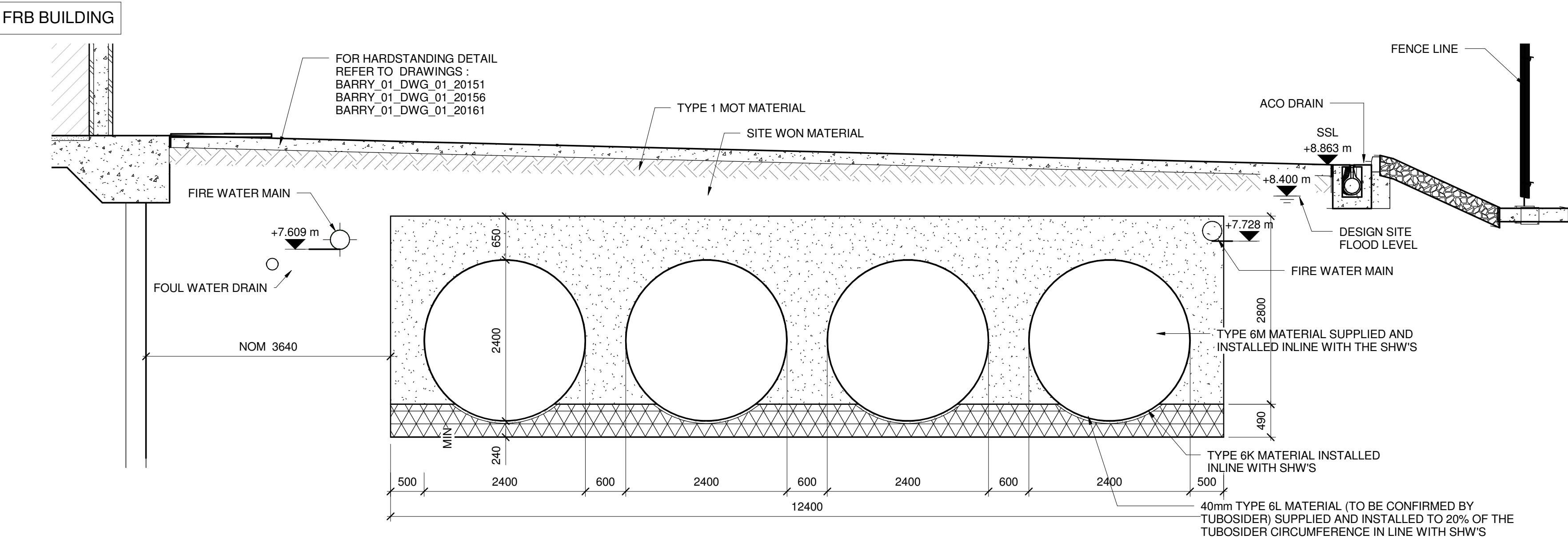
TOTAL ATTENUATION - 706m³  
ATTENUATION TANK STORAGE VOLUME - 652.8m³  
FRB BUILDING PIT STORAGE VOLUME - 54m³

VOLUME REQUIREMENTS BASED ON 220m³ FIRE DEMAND, 369m³ SPRINKLER DEMAND & 120m³ 1:1 YEAR STORM.



ATTENUATION TANK SECTION B-B

SCALE 1 : 50



ATTENUATION TANK SECTION C-C

SCALE 1 : 75

DO NOT SCALE - IF IN DOUBT ASK

NOTES

GENERAL

- DO NOT SCALE FROM THIS DRAWING.
- ALL DIMENSIONS ARE IN MILLIMETRES (mm) & ALL LEVELS ARE IN METRES (m) AOD, UNLESS STATED OTHERWISE.
- ALL DIMENSIONS & LEVELS TO BE CHECKED ON SITE AND ANY DISCREPANCIES SHOULD BE REPORTED TO GHD LIVGUNN.
- THIS DRAWING IS TO BE READ IN CONJUNCTION WITH ALL RELEVANT PROJECT STANDARDS AND SPECIFICATIONS.

DRAINAGE:

- ALL DRAINAGE WORKS TO BE CARRIED OUT IN ACCORDANCE WITH CESWI 7TH EDITION
- ALL TUBOSIDER ELEMENTS TO BE INSTALLED INLINE WITH MANUFACTURES DETAILS
- ALL BEDDING TO OTHER SERVICES AS STANDARD DETAIL DRAWING : BARRY\_01\_DWG\_01\_20135

SAFETY, HEALTH & ENVIRONMENTAL (SHE) INFORMATION

IN ADDITION TO THE HAZARDS/RISKS NORMALLY ASSOCIATED WITH THE TYPES OF WORK DETAILED ON THIS DRAWING, NOTE THE FOLLOWING:

CONSTRUCTION

- EXISTING BURIED SERVICES MAY BE PRESENT.
- WATER TABLE LEVEL AT +5.000m AOD (APPROX) REFER TO CCG REPORT CCG-C-15-80605-5

MAINTENANCE / CLEANING

1. MANHOLES ARE A CONFINED SPACE WITHOUT A SAFE MEANS OF ACCESS OR EGRESS. ENTRY PERMIT IS REQUIRED FOR ACCESS AND MAINTENANCE, WITH A SAFE AND SUITABLE MEANS OF ENTRY TO BE PROVIDED

DECOMMISSIONING / DEMOLITION

NO SIGNIFICANT RISK

2D EXPORT FROM A 3D MODEL  
ALL ALTERATIONS TO BE MADE IN THE MODEL FILE

PRELIMINARY

| Rev | Date       | Description                         | By  | Chk | App |
|-----|------------|-------------------------------------|-----|-----|-----|
| D   | 06.04.2018 | VOLUME DESCRIPTIONS UPDATED         | AJS | MS  | GB  |
| C   | 26.07.2017 | UPDATED FOR TUBOSIDER SYSTEM        | JW  | MS  | GB  |
| B   | 20.07.2017 | UPDATED FOR TUBOSIDER SYSTEM        | JW  | MS  | GB  |
| A   | 28.06.2016 | PRELIMINARY, ISSUED FOR INFORMATION | JW  | MS  | GB  |

The Studio  
51 Brookfield Road  
Cheadle  
SK8 1ES  
0161 491 4600  
info@ghdlivgunn.com

CLIENT

PROJECT

BARRY BIOMASS UK NO 2 LIMITED

TITLE

ATTENUATION TANK  
GENERAL ARRANGEMENT

SCALE  
SEE DRAWING

DWG No.  
BARRY\_01\_DWG\_01\_20145

DRAWING SIZE  
A1

REV.  
D